


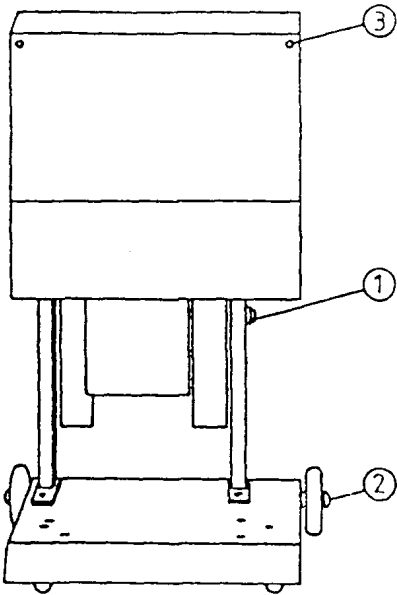
ECOMIX 2000

Grounding

Check of the grounding connection between the mobile support of the grounding clamp 

① and the axle ② or the armature support ③

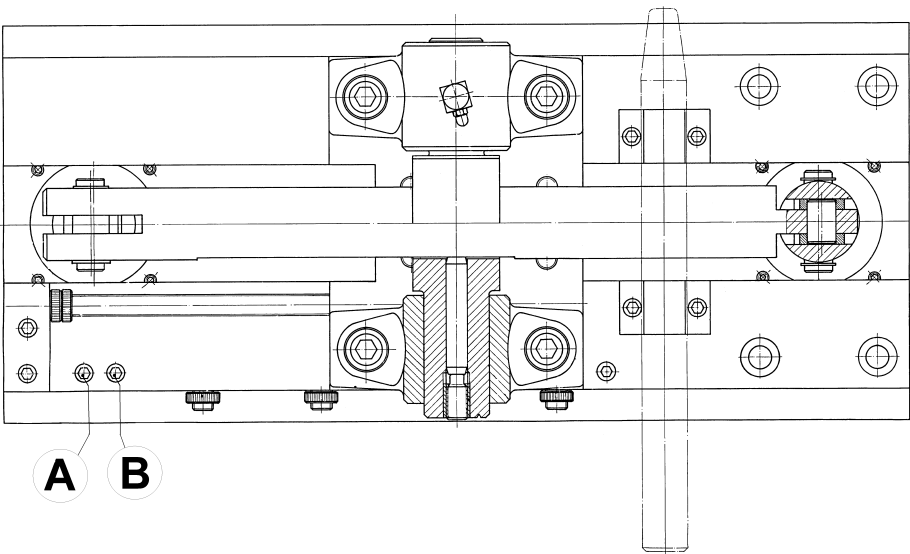
Measuring device: continuity tester (optical or acoustical)



Limiting the adjustment range (bearing unit)

(Mix ratio)

Stop screw	
Position ①	Position ②
all models	<u>only</u> model
except	HD 35 20
→	HD 35 35
	HD 50 20
	HD 50 25
	HD 50 50



Note protection mark in accordance with DIN 34

Subject to change

Page 1 of 1

Prepared by	PB 09.02
Checked by	PB 09.02

USER INFORMATION
- INSTALLATION DIRECTIONS -

Issued	09.02
	B.8.20.60-M