

## PNEUMATIC ELEVATOR

Two-column pneumatically operated elevator for reciprocating and diaphragm pumps.

Part nbr. 79553 004002

DESCRIPTION

The pneumatic elevator essentially consists of two guide tubes ①, the tube stirrup ②, the pump support ③, the manual lever valve ④ and optionally a flat iron bar or a plate ⑤, that supports the guide tubes.

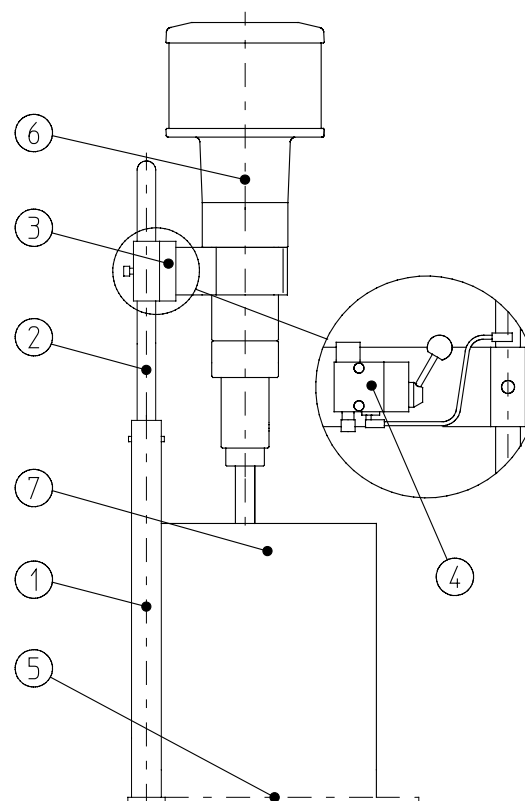
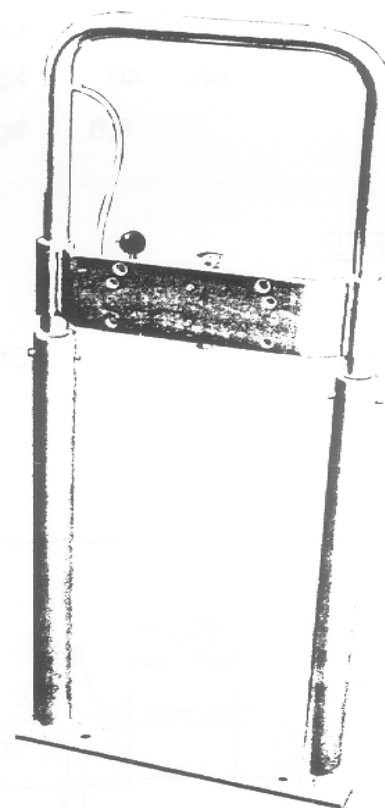
By operating the manual lever valve (turn it upwards), the tube stirrup in conjunction with the guide tubes acts as two pneumatic cylinders joined together, and travels to its top end position.

The pump that is fixed to height adjustable pump support moves up, the suction tube of the pump ⑥ leaves the container (drum or pail).

After the empty container has been replaced by a new one, the manual lever valve is operated again (by turning it downwards).

The tube stirrup with pump support and pump travels down to its bottom end position; the suction tube dips into the container.

- Upwards and downwards strokes are carried out at reduced speed.



Replacement for issue of 06.92

Subject to change

Page 1 of 3

Prepared 07.12.99 Stengele

Approved 10.12.99 Kuhn

**USER INFORMATION**  
- TECHN. PRODUCT DESCRIPTION -

Issued 12.99

B.16.10.04-P

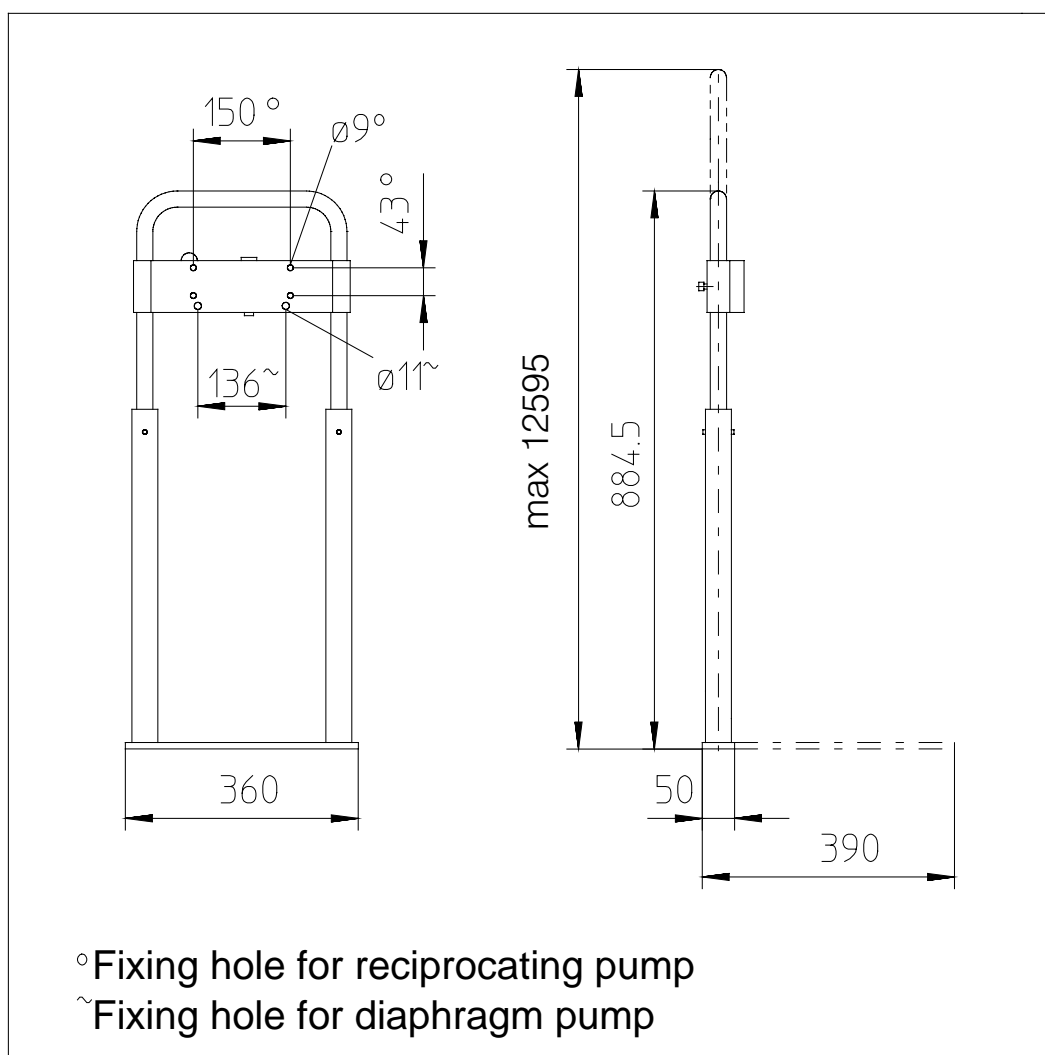
## TECHNICAL DATA

Operating air pressure	7	bar
Stroke	375	mm
Pressure line	DN 6	DA 8
Load carrying capacity	approx. 40	kg
Weight	8.8	kg

## CONSTRUCTION MATERIALS

Frame Galvanized steel

## DIMENSIONS



## REMARKS

The pneumatic elevator can be re-equipped for the 30 l barrel press.

This technical product description also serves as operating instructions.

### **Documentation and directives to be complied with**

ZH 1/200 Richtlinien für die Vermeidung von Zündgefahren  
infolge elektrostatischer Aufladung  
Carl Heymanns Verlag KG., Köln

VBG 23      Verarbeiten von Anstrichstoffen  
Hauptverband der gewerblichen Berufsgenossenschaften  
Carl Heymanns Verlag KG., Köln

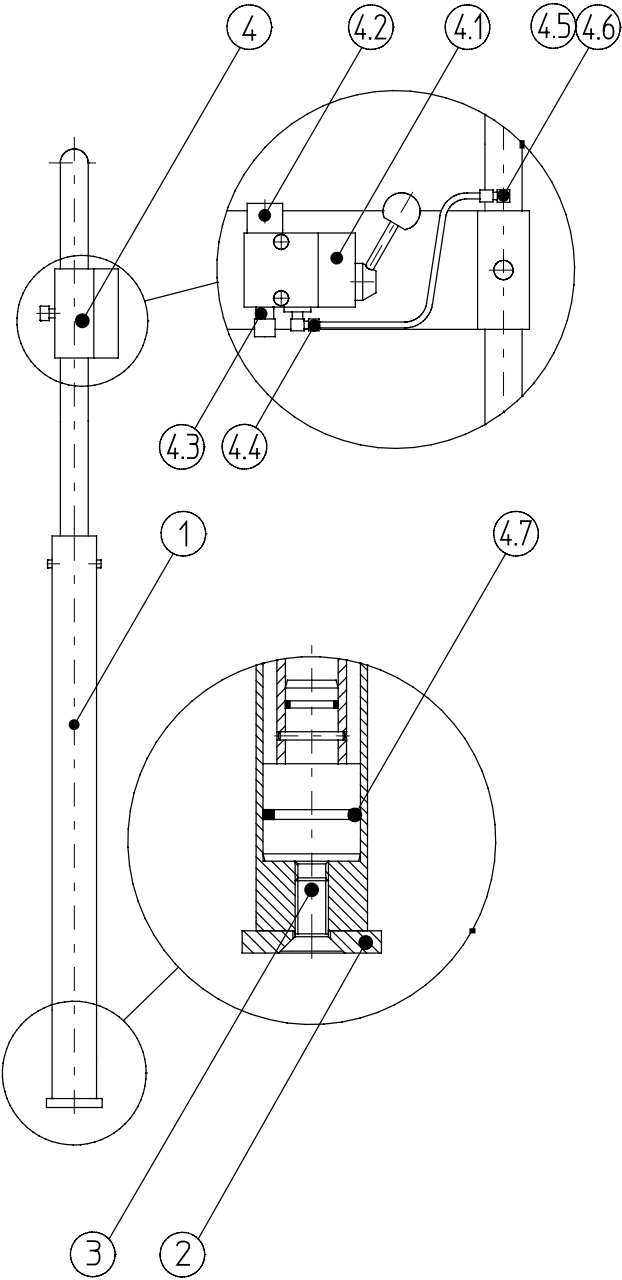
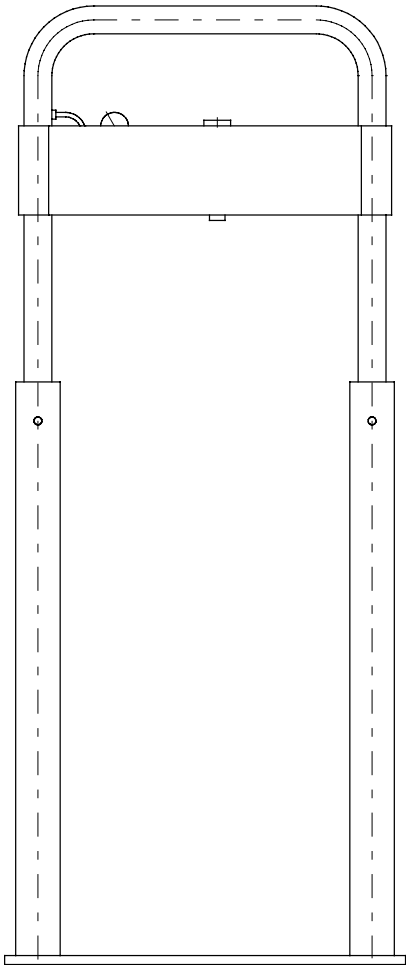
## Associated documentation

List of repair parts B.16.10.04-E

List of items in the figure B.17.05.07-S

**GRACO N.V.**  
**Industrieterrein "Oude Bunders"**  
**Loc. 2206 - Slakweidestraat 31**  
**3630 Maasmechelen – Belgium**  
**Tel.: 32 89 770 700 Fax: 32 89 770**

ELEVATOR



Note protection mark in accordance with DIN 34

Replacement for issue of 06.92

Subject to change

Prepared 07.12.99 Stengele	USER INFORMATION - LIST OF REPAIR PARTS -	Issued 12.99
Checked		B.16.10.04-E

## ELEVATOR

Part nbr.: 79553 004002

Pos	off	Part nbr.	Description
1	2	77576 047002	Cylinder tube complete. 40 x 2,5 505
2	1	76824 029002	Plate 50 x 10 x 360
3	2	74020 063023	Countersunk screw M 12 x 30
4	1	77650 024003	Pump support complete
		Wearing parts:	
4.1	1	75585 006001	Manual lever valve 3/2-way
4.2	1	75665 006003	Muffler G 1/4
4.3	1	75201 001010	Plug G-R 1/4
4.4	1	75202 001002	Plug W-G 1/8
4.5	1	75210 001002	Plug SW-M 5
4.6	1	75188 036006	Seal 5 x 7,5 x1
4.7	2	75730 065028	Piston seal 35 x 27 x 3.25

## **GRACO STANDARD WARRANTY**

Graco warrants all equipment referenced in this document which is manufactured by Graco and bearing its name to be free from defects in material and workmanship on the date of sale by an authorized Graco distributor to the original purchaser for use. With the exception of any special, extended, or limited warranty published by Graco, Graco will, for a period of twelve months from the date of sale, repair or replace any part of the equipment determined by Graco to be defective. This warranty applies only when the equipment is installed, operated and maintained in accordance with Graco's written recommendations.

This warranty does not cover, and Graco shall not be liable for general wear and tear, or any malfunction, damage or wear caused by faulty installation, misapplication, abrasion, corrosion, inadequate or improper maintenance, negligence, accident, tampering, or substitution of non-Graco component parts. Nor shall Graco be liable for malfunction, damage or wear caused by the incompatibility of Graco equipment with structures, accessories, equipment or materials not supplied by Graco, or improper design, manufacture, installation, operation or maintenance of structures, accessories, equipment or materials not supplied by Graco.

This warranty is conditioned upon the repaid return of equipment claimed to be defective to an authorized Graco distributor for verification of claimed defect. If the claimed defect is verified, Graco will repair or replace free of charge any defective parts. The equipment will be returned to the original purchaser transportation prepaid. If inspection of the equipment does not disclose any defect in material or workmanship, repairs will be made at a reasonable charge, which charges may include the costs of parts, labor, and transportation.

THIS WARRANTY IS EXCLUSIVE, AND IS IN LIEU OF ANY OTHER WARRANTIES, EXPRESS OR IMPLIED, INCLUDING BUT NOT LIMITED TO WARRANTY OF MERCHANTABILITY OR WARRANTY OF FITNESS FOR A PARTICULAR PURPOSE.

Graco's sole obligation and buyer's sole remedy for any breach of warranty shall be as set forth above. The buyer agrees that no other remedy (including, but not limited to, incidental or consequential damages for lost profits, lost sales, injury to person or property, or any other incidental or consequential loss) shall be available. Any action for breach of warranty must be brought within two (2) years of the date of sale.

Graco does not extend its warranty to accessories, appliances, materials or components which are sold by Graco but are not manufactured by Graco and makes no guarantee, however implied, with regard to the brand capability and suitability for a certain purpose. These parts sold by Graco but not manufactured by Graco (such as electric motors, switches, hoses, etc.) are covered by the warranties of the respective manufacturers. Graco will support the buyer in enforcing any warranty claim with the proviso that in no event can Graco be made liable for indirect, incidental, special or consequential damages which arise from the supply of appliances by Graco under the conditions governed by these provisions, or the supply, performance or use of any products or other goods which are sold under the conditions governed by these provisions, whether as the result of breach of contract, breach of warranty, negligence on the part of Graco or for any other reason.

**GRACO N.V.**

**Industrieterrein "Oude Bunders"**

**Loc. 2206 - Slakweidestraat 31**

**3630 Maasmechelen – Belgium**

**Tel.: 32 89 770 700 Fax: 32 89 770**

