

## FILTER PN 500

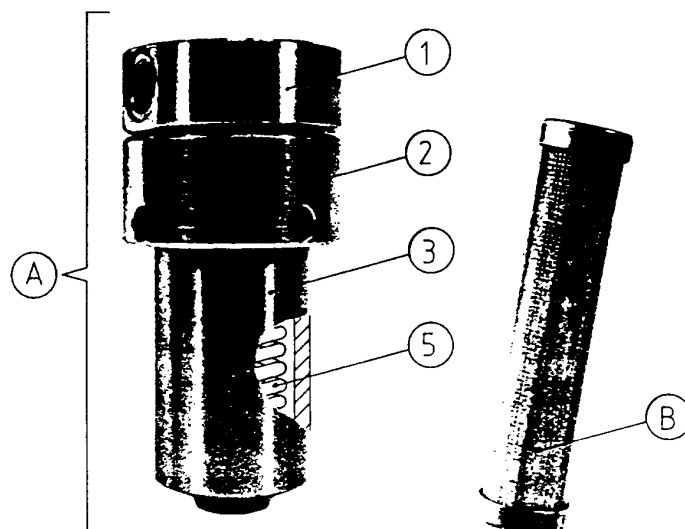
The filter consists out of the filter housing part (A) and the filter insert (B), for installation in lines for fluid materials, in particular paints up to a pressure of 500 bar.

**Description**

The filter consists of the head (1), the union nut (2) and the filter housing (3).

The filter housing is fixed by the union nut onto the head.

A spring (5) inside the filter housing serves as a support to the filter insert



When installing the filter in a pressure line the flow direction should be respected (see arrow on the head) and allowance made for the necessary extra height of the housing.

During operation, the direction of flow through the filter insert is from the outside to the inside. From time to time the filter insert must be removed and cleaned.

Before dismantling the system must be shut down and pressure relieved from the pressure line and the filter.

The pressure can be relieved from the filter by means of a ball valve attached at the filter housing.

**Attention**

The housing has mating surfaces and may not be thrown into a cleaning bath!

Subject to change

Page 1 of 3

Prepared by 15.12.99 Klöpp.

Checked by 15.12.99 Kuhn


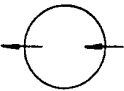
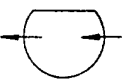
**USER INFORMATION**  
- TECHN. PRODUCT DESCRIPTION -

Issued 12.99

B.11.30.05-P

## Technical data

### Model range

Flow direction	Symbol	Product No. SST construction	
<ul style="list-style-type: none"><li>– Inlet on the right</li><li>– Outlet on top</li><li>– for wall mounting</li></ul>		79648 001002	
<ul style="list-style-type: none"><li>– Inlet on the right</li><li>– Outlet on the left</li><li>– for installation in a pipeline</li></ul>		79648 001003	
<ul style="list-style-type: none"><li>– Inlet on the right</li><li>– Outlet on the left</li><li>– for wall mounting</li></ul>		79648 001004	

permissible operating pressure	500	bar
- under pulsation load	400	bar
Test pressure	750	bar
Permissible operating temperature	120	°C
Filter area	78	m <sup>2</sup>
Weight without filter insert	ca. 2100	g
Nominal diameter	DN6	m

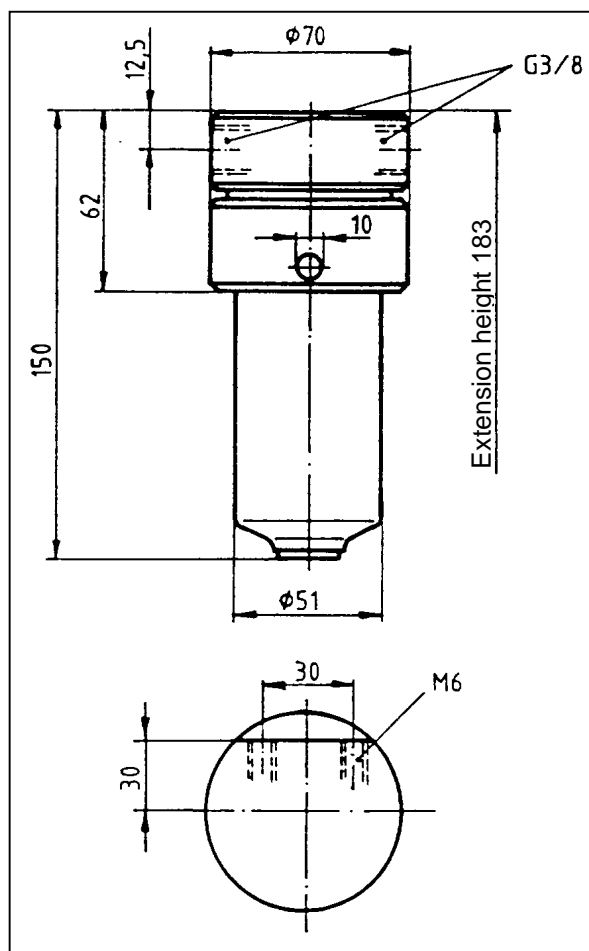
### Construction materials

#### SST

Connector	SST 1.4305
Filter housing	SST 1.4305
Union nut	Zinc plated steel
O-ring	PTFE
Spring	SST 1.4310

This filter complies with § 8 of the pressure container directive of 27.02.1980 as a pressure container of group V.

## Dimensions



## Build-up position

The filter can be installed in any position.

## Footnote

### Accessories

The filter inserts do not belong to the standard supply.

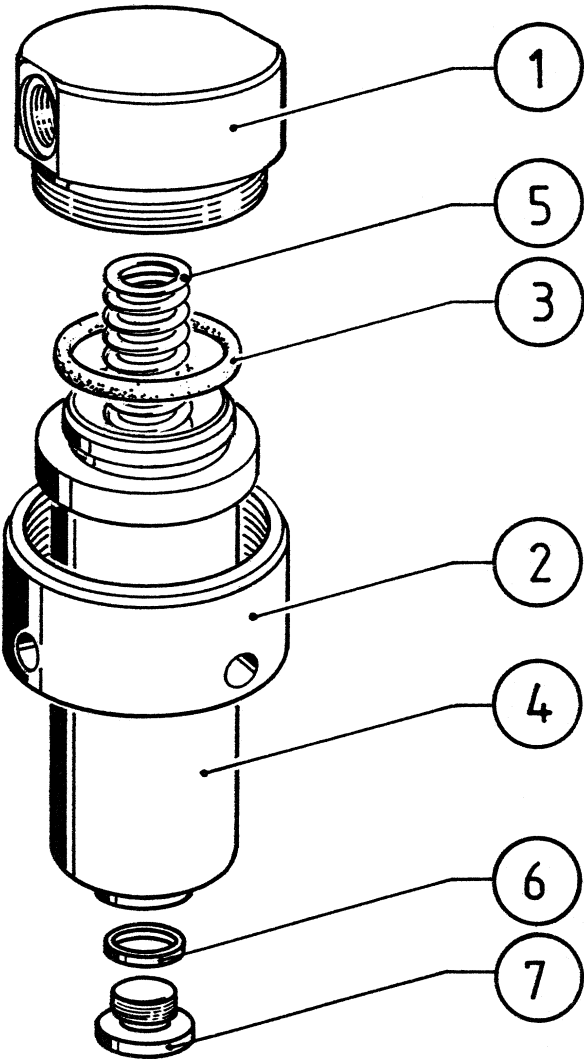
Order designation :	<b>Filter insert</b>	0.06 mm	Article No.	<b>76648 045002</b>
		0.075 mm	Article No.	<b>76648 045004</b>
		0.08 mm	Article No.	<b>76648 045006</b>
		0.09 mm	Article No.	<b>76648 045008</b>
		0.14 mm	Article No.	<b>76648 045009</b>
		0.19 mm	Article No.	<b>76648 045010</b>
		0.24 mm	Article No.	<b>76648 045012</b>
		0.32 mm	Article No.	<b>76648 045014</b>
		0.41 mm	Article No.	<b>76648 045016</b>
		0.53 mm	Article No.	<b>76648 045018</b>

## Relevant documentation

List of replacement parts B. 11.30.05-E

GRACO N.V.  
Industrieterrein "Oude Bunders"  
Loc. 2206 - Slakweidestraat 31  
3630 Maasmechelen - Belgium  
Tel.: 32 89 770 700 Fax: 32 89 770 777

FILTER PN 500



Note protection mark in accordance with DIN 34

Subject to change

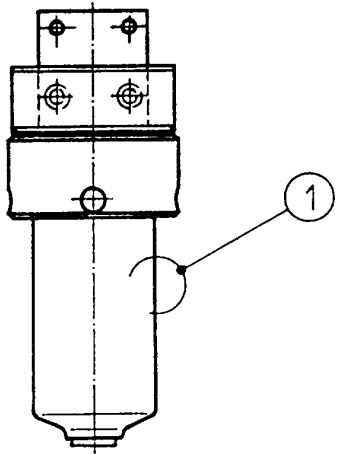
Page 1 of 2

Prepared	15.12.99 Klöpp.	USER INFORMATION - PARTS -	Issued	12.99
Checked	15.12.99 Kuhn		B.11.30.05-E	



**FILTER PN 500**

Product No. 79648 002001 SST



Relevant documentation

Pos. No.	Designation	Publication	Product No. of the publication
1	Filter PN 500	<b>B.11.30.05-P</b>	79996 001096
	Filter PN 500	<b>B.11.30.05-E</b>	79998 001096
	Filter PN 500	<b>B.11.30.06-E</b>	79998 001097

GRACO N.V.  
Industrieterrein “Oude Bunders”  
Loc. 2206 - Slakweidestraat 31  
3630 Maasmechelen - Belgium  
Tel.: 32 89 770 700    Fax: 32 89 770 777

Replaces issue of 05.91

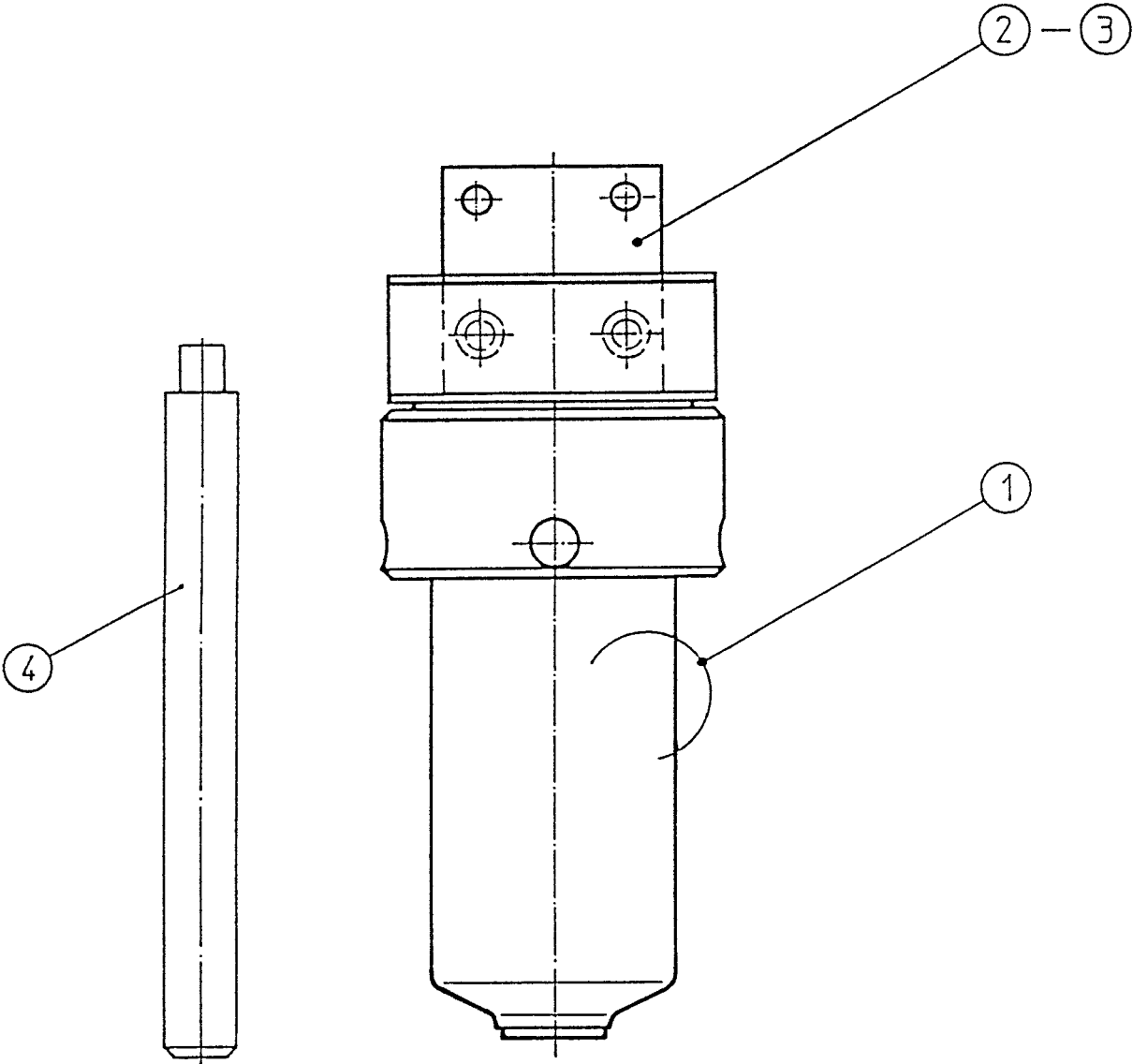
Note protection mark in accordance with DIN 34

Subject to change

Page 1 of 1

Prepared by 14.12.99 Klöpp.	<b>USER INFORMATION</b> <b>- TECHN. PRODUCT DESCRIPTION -</b>	Issued 12.99
Checked by 14.12.99 Kuhn		<b>B.11.30.06-P</b>

FILTER PN 500



Replaces issue 05.91

Subject to change

Page 1 of 2

Prepared	14.12.99 Klöpp.
Checked	14.12.99 Kuhn

**USER INFORMATION**  
**- PARTS -**

Issued	12.99
	B.11.30.06-E

Note protection mark in accordance with DIN 34

Ref. Nbr.	Reference document	Qty	Part Nbr.	Description
			<b>SST models</b>	
			<b>Part No. 79648 002001</b>	
<b>1</b>	B.11.30.05-E	1	(79998 001096)	Filter PN 500
	-		79648 001004	
<b>2</b>	-	1	76650 002001	Bracket
<b>3</b>	-	2	74007 029033	Cheese head screw M 6 x 12
<b>4</b>	-	1	76131 058001	Bolt 9.9 x 150

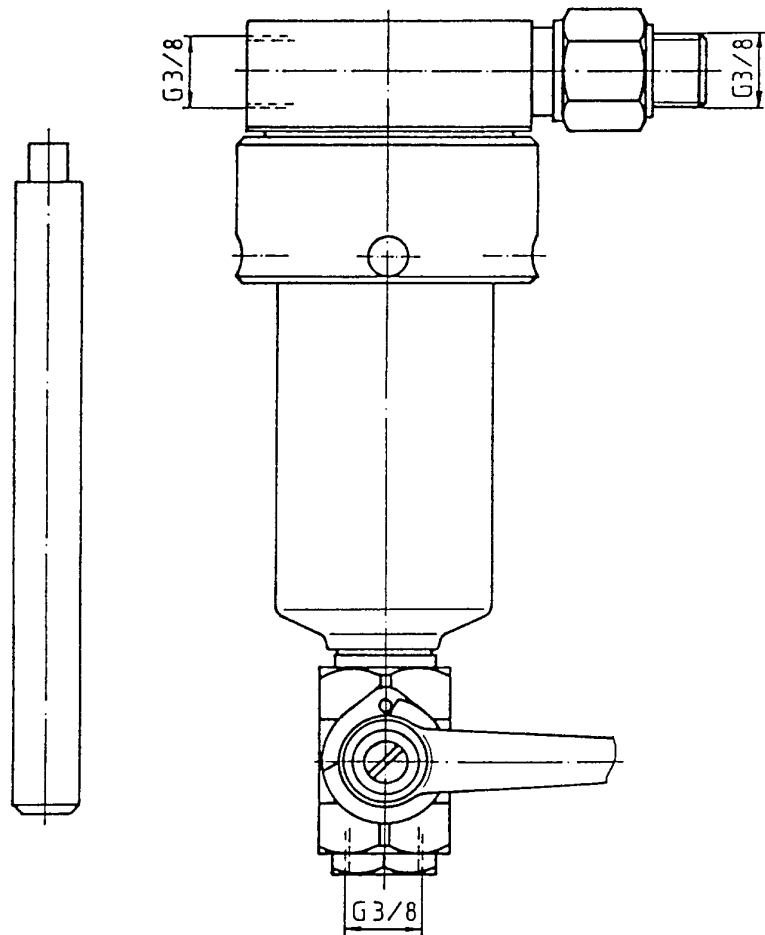
( ) Reference number of the publication

GRACO N.V.  
 Industrieterrein "Oude Bunders"  
 Loc. 2206 – Slakweidestraat 31  
 3630 Maasmechelen – Belgium  
 Telephone: 32 89 770 700 Fax: 32 89 770 777



Filter PN 500

SST construction      Product No. 79648 004003  
←



Relevant documentation

Pos. No.	Designation	Publication No.	Product No. of the publication
1	Filter PN 500	B.11.30.05-P	79996 001096
	Filter PN 500	B.11.30.08-E	79998 006097

GRACO N.V.  
Industrieterrein "Oude Bunders"  
Loc. 2206 - Slakweidestraat 31  
3630 Maasmechelen - Belgium  
Tel.: 32 89 770 700    Fax: 32 89 770 777

Replaces issue of 04.91

Subject to change

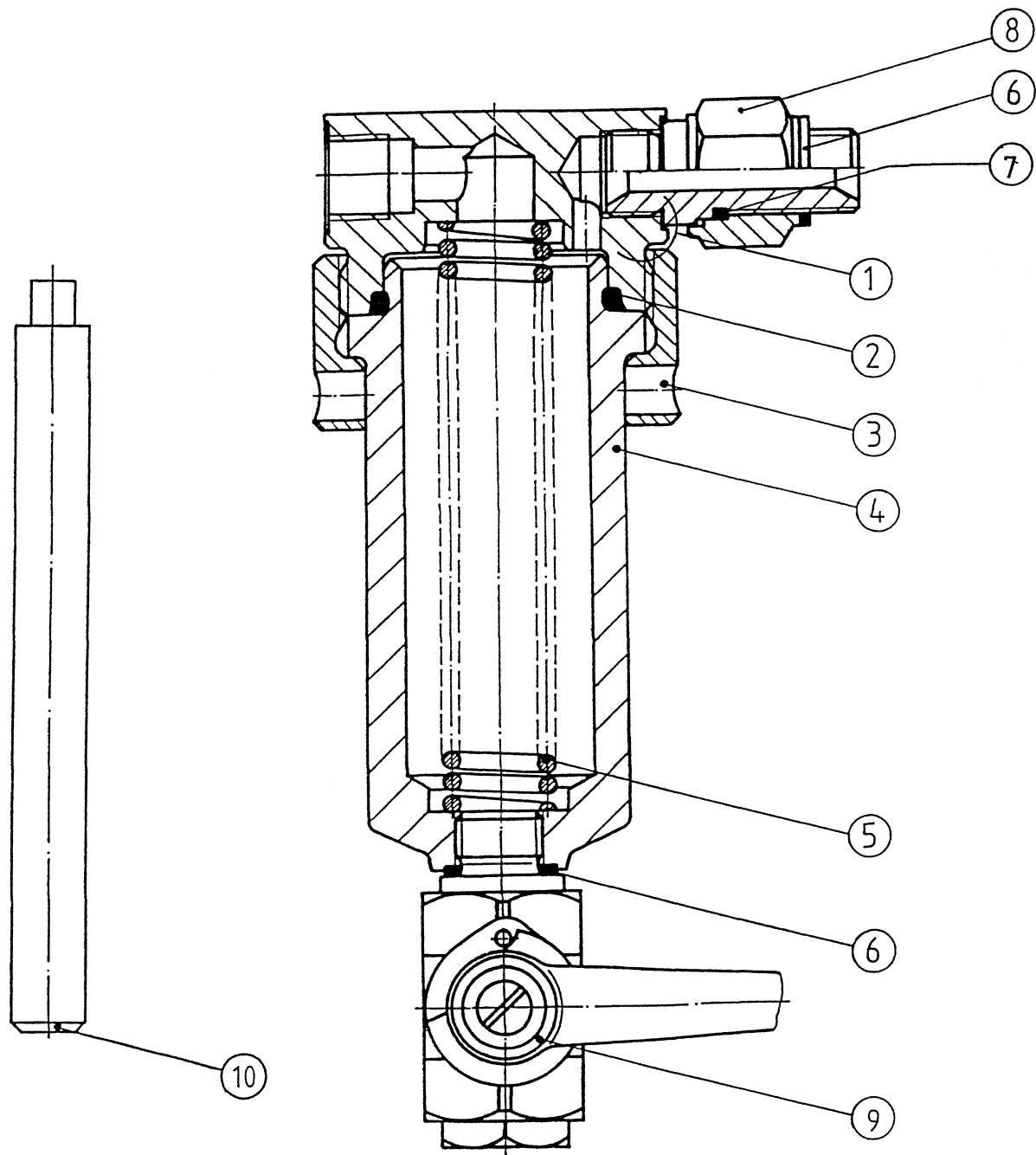
Page 1 of 1

Prepared by 14.12.99 Klöpp.  
Checked by 14.12.99 Kuhn

**USER INFORMATION**  
**- TECHN. PRODUCT DESCRIPTION -**

Issued 12.99  
B.11.30.08-P

Note protection mark in accordance with DIN 34



Replaces issue 04.91

Subject to change

Page 1 of 2

Prepared 22.11.00 Stengele

Checked 22.11.00 Kuhn

USER INFORMATION  
- PARTS -

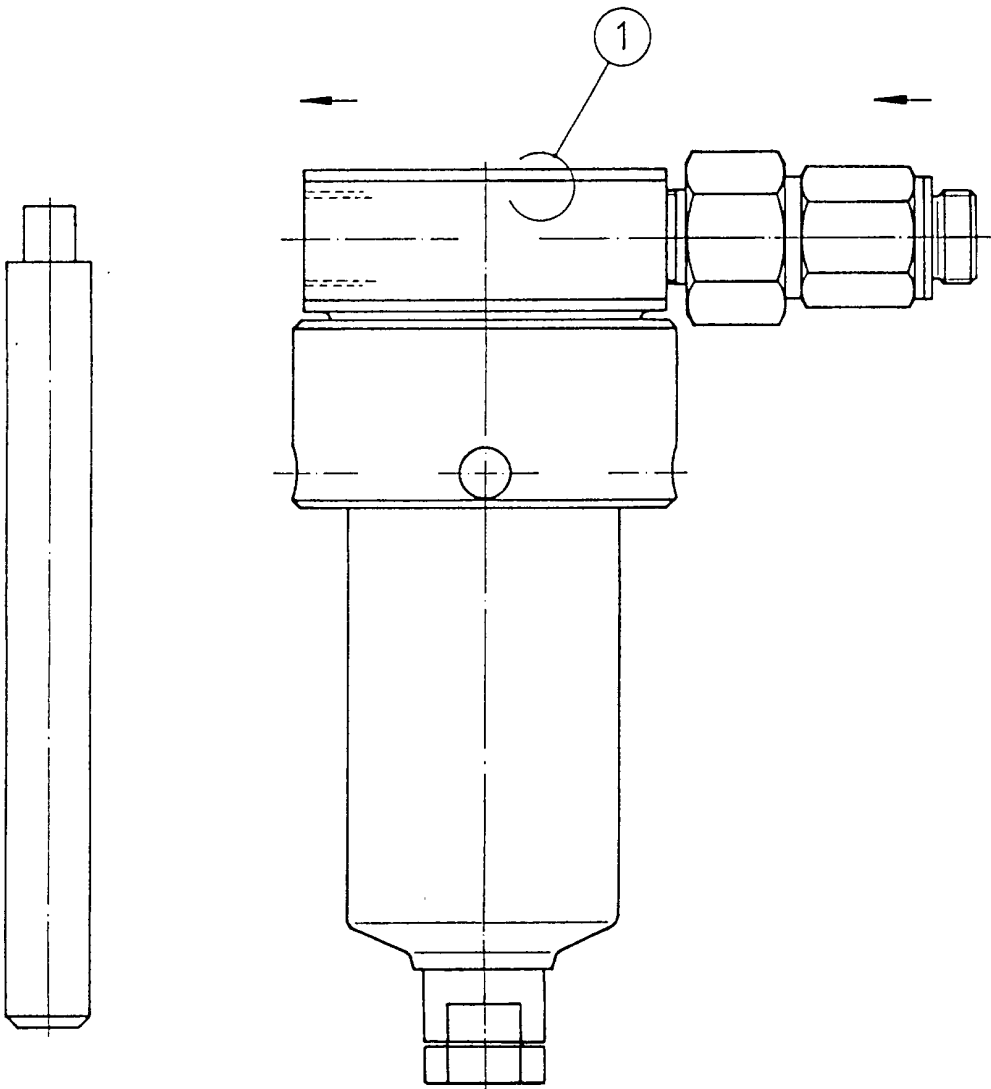
Issued 11.00

B.11.30.08-E

Ref. nbr.	Qty	Part nbr.	Description	Dimensions
			SST models	
			Part No. 79648 004003	
1	1	77741 009003	Connector	
2	1	75186 005033	O-ring	41 x 3,53
3	1	76089 108001	Union nut	M 60 x 2
4	1	76649 009001	Filter housing	
5	1	76310 001002	Spring	
6	2	74188 015090	Seal	A 17 x 21
7	1	74186 025011	O-ring	14 x 2 B
8	1	76073 093002	Nut	G 3/08 H 21
9	1	75601 006002	Ball valve	PN 500 R 3/8
10	1	76131 058001	Bolt	9,9 x 150

FILTER PN 500

Product No. 79648 004005 SST  
79648 004006 SST



Relevant documentation

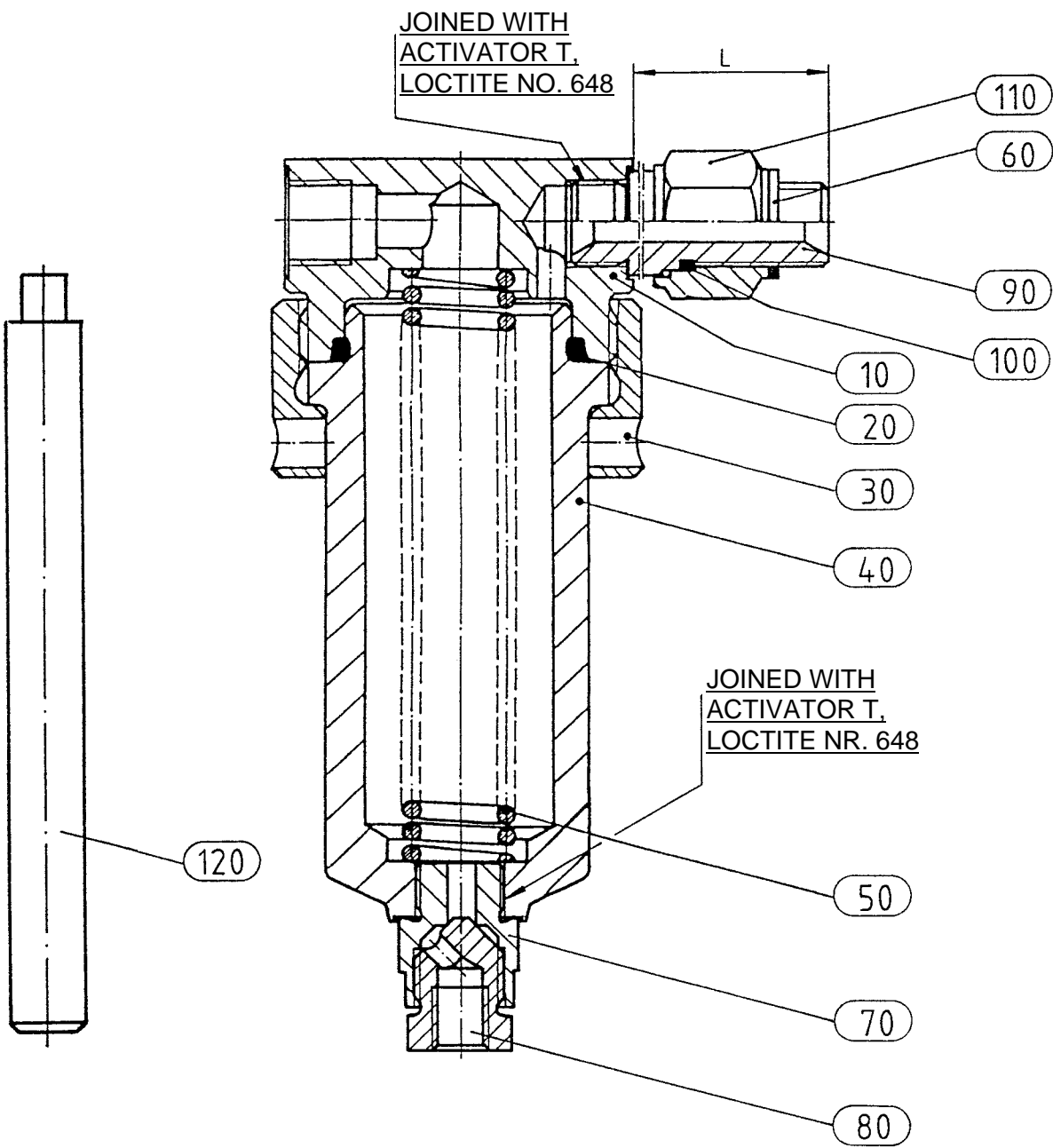
Pos. No.	Designation	Publication No.	Product No. of the publication
1	Filter PN 500	B.11.30.05-P	79996 001096
	Filter PN 500	B.11.30.09-E	79998 001098

Licence 7

Subject to change

Page 1 of 1

Prepared by 21.12.99 Klöpp.	USER INFORMATION - TECHN. PRODUCT DESCRIPTION -	Issued 12.99
Checked by 21.12.99 Kuhn		B.11.30.09-P



Model		Reference of the document
Material	L	
SST	37	B . 11.30.09-E-3
	203	B . 11.30.09-E-2

Subject to change

Continued on page 2 to 3

Prepared	30.03.94	<b>PARTS</b>	Issued	12.99
Checked	8.04.94		B.11.30.09-E	

FILTER		PN 500		Part Nbr. 79648 004005	
Ref. nbr.	Qty	Part Nbr.	Description		Identification
10	1	76741 034001	CONNECTOR	-	D
20	1	75186 005033	O-RING	41 X3,53	
30	1	76089 108001	UNION NUT	M 60 x 2	
40	1	76649 009001	FILTER HOUSING	-	
50	1	76310 001002	SPRING	-	D
60	1	74188 015090	SEAL	A 17 x 21	
70	1	76641 008002	NIPPLE	G 5 -G 3/8	
80	1	76641 009002	NIPPLE	G 5 -G 1/4	
90	1	76640 017014	NIPPLE	8-G 3/8A	D
100	1	74186 025011	O-RING	14x2 B	
110	1	76073 093002	NUT	G 3/8 H 21	
120	1	76131 058001	BOLT	9,9 X150	
* END OF PART LIST *					
GRACO N.V. Industrieterrein "Oude Bunders" Loc. 2206 – Slakweidestraat 31 3630 Maasmechelen – Belgium Telephone: 32 89 770 700 Fax: 32 89 770 777					

FILTER

PN 500

Part Nbr.  
79648 004006

Ref. nbr.	Qty	Part Nbr.	Description	Identification.
10	1	76741 034001	CONNECTOR	-
20	1	75186 005033	O-RING	41 X3,53
30	1	76089 108001	UNION NUT	M 60X2
40	1	76649 009001	FILTER HOUSING	-
50	1	76310 001002	SPRING	-
60	1	74188 015090	SEAL	A 17 x 21
70	1	76641 008002	NIPPLE	G 5 -G 3/8
80	1	76641 009002	NIPPLE	G 5 -G 1/4
90	1	76640 017003	NIPPLE	8-G 3/8A
100	1	74186 025011	O-RING	14x2 B
110	1	76073 093002	NUT	G 3/8 H 21
120	1	76131 058001	BOLT	9,9 X150
* END OF PART LIST *				
<p>GRACO N.V.            Industrieterrein "Oude Bunders"            Loc. 2206 – Slakweidestraat 31            3630 Maasmechelen – Belgium            Telephone: 32 89 770 700 Fax: 32 89 770 777</p>				

A = Replacement part  
D = Seal

K = Supplied as complete set  
M = Assembly tool

V = Wear part  
W = Maintenance part

Subject to change  
Page 3

Prepared 30.3.94

Checked 07.4.94 Watz

PARTS

Issued 12.99

B.11.30.09-E-3

## **GRACO STANDARD WARRANTY**

Graco warrants all equipment referenced in this document which is manufactured by Graco and bearing its name to be free from defects in material and workmanship on the date of sale by an authorized Graco distributor to the original purchaser for use. With the exception of any special, extended, or limited warranty published by Graco, Graco will, for a period of twelve months from the date of sale, repair or replace any part of the equipment determined by Graco to be defective. This warranty applies only when the equipment is installed, operated and maintained in accordance with Graco's written recommendations.

This warranty does not cover, and Graco shall not be liable for general wear and tear, or any malfunction, damage or wear caused by faulty installation, misapplication, abrasion, corrosion, inadequate or improper maintenance, negligence, accident, tampering, or substitution of non-Graco component parts. Nor shall Graco be liable for malfunction, damage or wear caused by the incompatibility of Graco equipment with structures, accessories, equipment or materials not supplied by Graco, or improper design, manufacture, installation, operation or maintenance of structures, accessories, equipment or materials not supplied by Graco.

This warranty is conditioned upon the repaid return of equipment claimed to be defective to an authorized Graco distributor for verification of claimed defect. If the claimed defect is verified, Graco will repair or replace free of charge any defective parts. The equipment will be returned to the original purchaser transportation prepaid. If inspection of the equipment does not disclose any defect in material or workmanship, repairs will be made at a reasonable charge, which charges may include the costs of parts, labor, and transportation.

THIS WARRANTY IS EXCLUSIVE, AND IS IN LIEU OF ANY OTHER WARRANTIES, EXPRESS OR IMPLIED, INCLUDING BUT NOT LIMITED TO WARRANTY OF MERCHANTABILITY OR WARRANTY OF FITNESS FOR A PARTICULAR PURPOSE.

Graco's sole obligation and buyer's sole remedy for any breach of warranty shall be as set forth above. The buyer agrees that no other remedy (including, but not limited to, incidental or consequential damages for lost profits, lost sales, injury to person or property, or any other incidental or consequential loss) shall be available. Any action for breach of warranty must be brought within two (2) years of the date of sale.

Graco does not extend its warranty to accessories, appliances, materials or components which are sold by Graco but are not manufactured by Graco and makes no guarantee, however implied, with regard to the brand capability and suitability for a certain purpose. These parts sold by Graco but not manufactured by Graco (such as electric motors, switches, hoses, etc.) are covered by the warranties of the respective manufacturers. Graco will support the buyer in enforcing any warranty claim with the proviso that in no event can Graco be made liable for indirect, incidental, special or consequential damages which arise from the supply of appliances by Graco under the conditions governed by these provisions, or the supply, performance or use of any products or other goods which are sold under the conditions governed by these provisions, whether as the result of breach of contract, breach of warranty, negligence on the part of Graco or for any other reason.

**GRACO N.V.**

**Industrieterrein "Oude Bunders"**

**Loc. 2206 - Slakweidestraat 31**

**3630 Maasmechelen – Belgium**

**Tel.: 32 89 770 700 Fax: 32 89 770 777**

