

PRESSURE REGULATION VALVE P100-RM; P200-RM (RETURN FLOW)

Manually regulated pressure regulation valve for liquid materials. In particular for paints at operating temperature within a viscosity range of 30 to 1500 mm²/s (cSt).

- In special cases the range can be extended.

Description

The pressure regulation valve P 200-VP essentially consists of the housing bottom part ① with valve seat ② and fluid connection holes ③ as well as the housing top part ④ with pressure spring ⑤ and spring plate ⑥. The spring is adjusted by means of the cap ⑦.

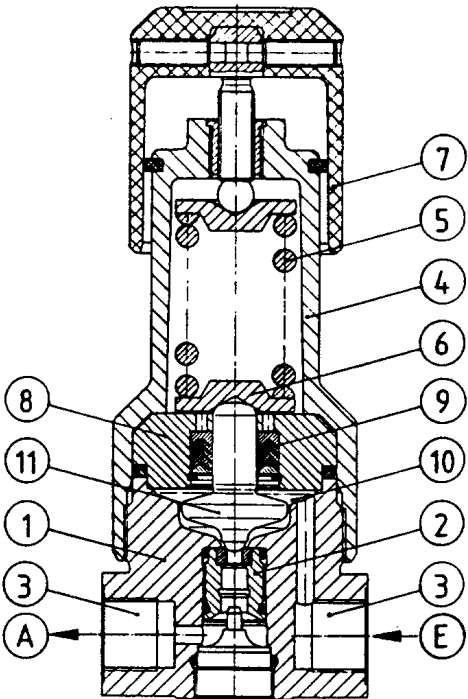
A packing seat ⑧ with packing ⑨ is fitted between the housing bottom part and top part as a seal (fluid space/spring space).

The pressure regulation valve is fitted in circulation circuits (circulation lines).

During operation, the fluid under pressure flows from the inlet (E) into the fluid space ⑩ and from there through the valve seat to the outlet (A).

Changes in the fluid inlet pressure e.g. due to removal are transmitted to the pressure spring by movement of the valve tappet ⑪ and have the effect of changing the cross-section in the valve seat.

In this way consumers connected to the system are protected from interruptions, and large pressure fluctuations in the ring circuit are avoided.



Replaces issue of 02.89

Subject to change

Prepared by 24.09.99 Stengele

Checked by 19.10.99 Kuhn

USER INFORMATION
- TECHN. PRODUCT DESCRIPTION -

Issued 10.99

B.12.60.01-P

Note protection mark in accordance with DIN 34

The pressure regulation valve is designed for straight pipeline installation with the shortest throttle path and the best possible flushing capacity.

- Internal threads have been avoided.

Technical data

Model range

Pressure regulation valve Model	Inlet pressure [bar]	Materials of the parts in contact with the fluid	Weight [kg]	Article No.
P100 - RM	170	Stainless steel 1.4305	1,1	79638 002004
P200 - RM	235			79638 002005

Fluid

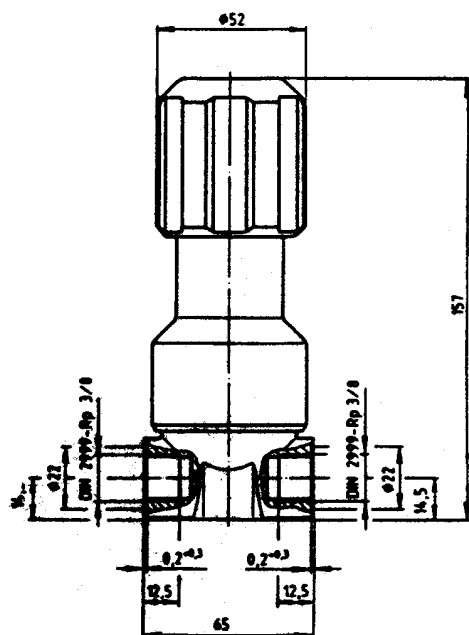
- Temperature range 0 ° C to + 90 ° C

Max. flow rate 23.4 l/min. with free passage in the pressure regulation valve

Construction materials

Valve tappet, ball, seat	Hardened steel G10
Packing	PTFE
Seals	FPM

Dimensions



Build-up position Vertical, cap points upwards

Commissioning, Operation

All pressure regulation valves are tested for operation with an anti-corrosion liquid after factory assembly.

On commissioning, the residue from this liquid as well as contaminants that are unavoidable during the assembly of the system, must be thoroughly flushed out with suitable solvents (detergents).

Before prolonged shutdown (holidays), the pressure regulation valves should also be flushed and the detergent left in the system until the next time it is used.

Faults and their causes

Fault location	Fault	
	Outlet pressure reaches the value of the inlet pressure	Fluid escapes from the aeration hole of the packing box
Valve	Foreign bodies (e.g. paint residues in the valve). Replace defective parts	
Packing		Replace defective packing

Footnote

This technical product description also serves as operating instructions.

Please consult us when processing highly abrasive and aggressive materials.

Associated documentation

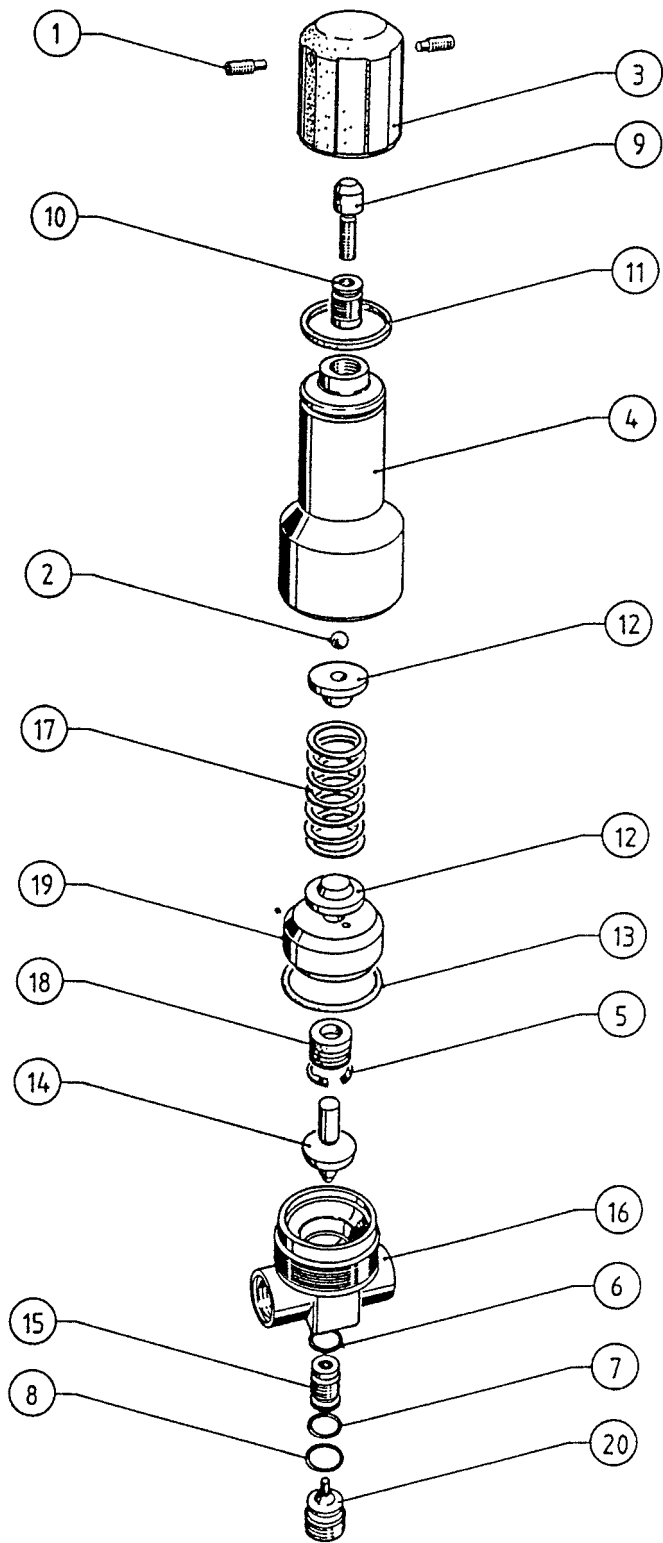
For accessories see sales catalogue

List of replacement parts B12.60.02-E

GRACO N.V.
Industrieterrein "Oude Bunders"
Loc. 2206 - Slakweidestraat 31
3630 Maasmechelen - Belgium
Tel.: 32 89 770 700 Fax: 32 89 770 777

**PRESSURE REGULATION VALVE
P100-RM - P200-RM**

SST basic model



Note protection mark in accordance with DIN 34

Subject to change

Prepared 12.11.99 Stengele	USER INFORMATION - PARTS -	Issued 11.99
Checked 12.11.99 Kuhn		B.12.60.02-E

PART Nbr. 79638 002004
PART Nbr. 79638 002005

A = Repair part
D = Seal
K = Supplied as complete set

M = Assembly tool
V = Wearing part
W = Maintenance part

B.12.60.02-E

GRACO STANDARD WARRANTY

Graco warrants all equipment referenced in this document which is manufactured by Graco and bearing its name to be free from defects in material and workmanship on the date of sale by an authorized Graco distributor to the original purchaser for use. With the exception of any special, extended, or limited warranty published by Graco, Graco will, for a period of twelve months from the date of sale, repair or replace any part of the equipment determined by Graco to be defective. This warranty applies only when the equipment is installed, operated and maintained in accordance with Graco's written recommendations.

This warranty does not cover, and Graco shall not be liable for general wear and tear, or any malfunction, damage or wear caused by faulty installation, misapplication, abrasion, corrosion, inadequate or improper maintenance, negligence, accident, tampering, or substitution of non-Graco component parts. Nor shall Graco be liable for malfunction, damage or wear caused by the incompatibility of Graco equipment with structures, accessories, equipment or materials not supplied by Graco, or improper design, manufacture, installation, operation or maintenance of structures, accessories, equipment or materials not supplied by Graco.

This warranty is conditioned upon the repaid return of equipment claimed to be defective to an authorized Graco distributor for verification of claimed defect. If the claimed defect is verified, Graco will repair or replace free of charge any defective parts. The equipment will be returned to the original purchaser transportation prepaid. If inspection of the equipment does not disclose any defect in material or workmanship, repairs will be made at a reasonable charge, which charges may include the costs of parts, labor, and transportation.

THIS WARRANTY IS EXCLUSIVE, AND IS IN LIEU OF ANY OTHER WARRANTIES, EXPRESS OR IMPLIED, INCLUDING BUT NOT LIMITED TO WARRANTY OF MERCHANTABILITY OR WARRANTY OF FITNESS FOR A PARTICULAR PURPOSE.

Graco's sole obligation and buyer's sole remedy for any breach of warranty shall be as set forth above. The buyer agrees that no other remedy (including, but not limited to, incidental or consequential damages for lost profits, lost sales, injury to person or property, or any other incidental or consequential loss) shall be available. Any action for breach of warranty must be brought within two (2) years of the date of sale.

Graco does not extend its warranty to accessories, appliances, materials or components which are sold by Graco but are not manufactured by Graco and makes no guarantee, however implied, with regard to the brand capability and suitability for a certain purpose. These parts sold by Graco but not manufactured by Graco (such as electric motors, switches, hoses, etc.) are covered by the warranties of the respective manufacturers. Graco will support the buyer in enforcing any warranty claim with the proviso that in no event can Graco be made liable for indirect, incidental, special or consequential damages which arise from the supply of appliances by Graco under the conditions governed by these provisions, or the supply, performance or use of any products or other goods which are sold under the conditions governed by these provisions, whether as the result of breach of contract, breach of warranty, negligence on the part of Graco or for any other reason.

GRACO N.V.

Industrieterrein "Oude Bunders"

Loc. 2206 - Slakweidestraat 31

3630 Maasmechelen – Belgium

Tel.: 32 89 770 700 Fax: 32 89 770 777

