

PRESSURE REGULATION VALVE P20-RM DN 13 (RETURN FLOW)

Manually regulated pressure regulation valve for liquid materials. In particular for paints at operating temperature within a viscosity range of 30 to 1500 mm²/s (cSt).

In special cases and with agreement the range can be extended.

Description

The pressure regulation valve essentially consists of the housing bottom part ① with valve seat ② and a fluid connection hole ③ as well as the housing top part ④ with pressure spring ⑤ and spring guide (spring cap) ⑥ and regulating key ⑦.

A diaphragm ⑧ is fitted as a separating element (fluid space/spring space) between the housing top part and bottom part.

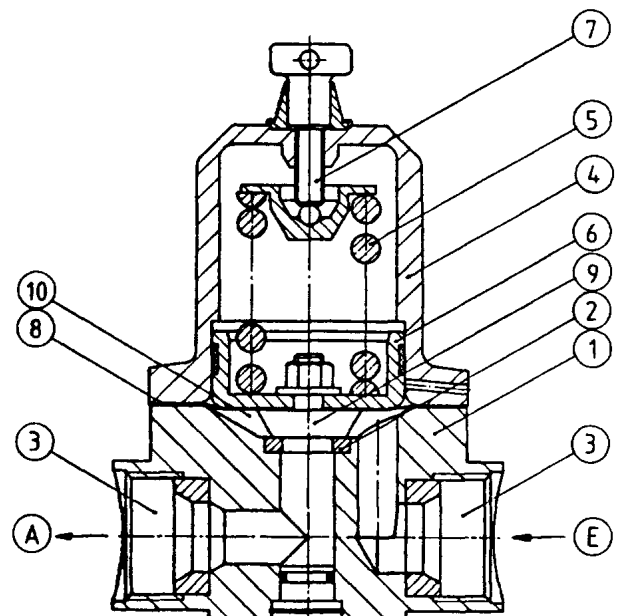
The valve tappet ⑨ connects the diaphragm to the spring cap and ensures the transmission of the diaphragm movement to the pressure spring.

The pressure regulation valve is fitted in circulation circuits.

During operation, the fluid under pressure flows from the inlet (E) into the fluid space ⑩ and from there through the valve seat to the outlet (A).

Changes in the fluid inlet pressure e.g. due to removal are transmitted to the pressure spring by movement of the diaphragm and have the effect of changing the cross-section in the valve seat via the valve tappet.

In this way consumers connected to the system are protected from pressure interruptions and large pressure fluctuations in the circuit can be avoided.



Replaces issue of 11.91

Subject to change

Page 1 of 3

Prepared by 21.09.99 Stengele

Checked by 19.10.99 Kuhn

USER INFORMATION - TECHN. PRODUCT DESCRIPTION -

Issued 10.99

B.12.45.05-P

The pressure regulation valve does not close completely. It is designed for straight pipeline installation with the shortest throttle path and the best possible flushing capacity.

- Internal threads have been avoided.

Technical data

Model range

Pressure regulation valve Model	Regulation pressure range [bar]	Construction materials, valve tappet, valve seat	Weight [kg]	Article No.
P20-RM DN13	2 - 20	Stainless steel 1.4401 Nitrated	1,980	79636 010002
		Hardened steel G10		79636 010003

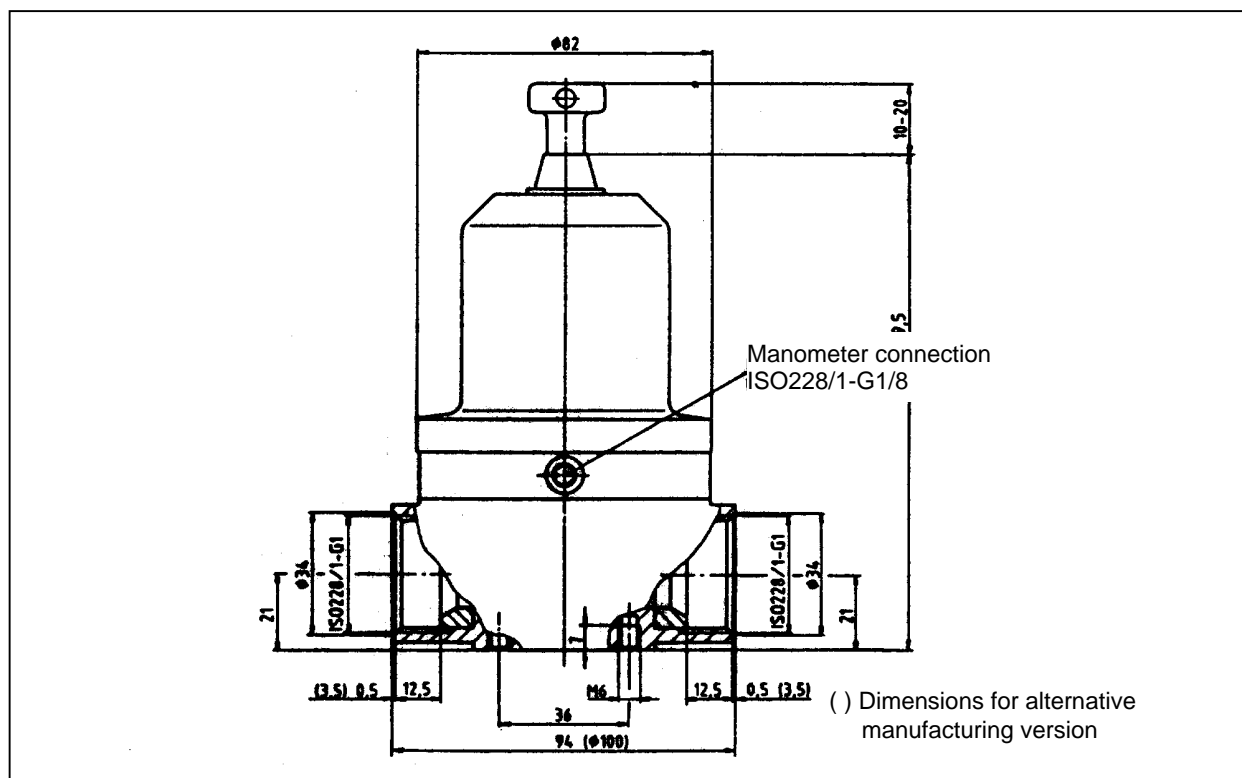
Fluid

- Temperature range 0 to 90 °C
- Max. permissible inlet pressure 20 bar

Construction materials

Parts in contact with the fluid	SST/Hardened steel G10
Diaphragm	PTFE (rubber-lined on the spring side)
Seals	FPM

Dimensions



Build-up position Vertical, regulating key points upwards

Commissioning, Operation

All pressure regulation valves are tested for operation with an anti-corrosion liquid after factory assembly.

When commissioning the residues of this anti-corrosion liquid as well as contaminants that are unavoidable during the assembly of the system, should be thoroughly flushed out with a suitable solvent (detergent).

Before prolonged shutdown (holidays), the pressure regulation valves should also be flushed and the detergent left in the system until the next time it is used.

Faults and their causes

Fault	Inlet pressure exceeds the set value.	Inlet pressure is falling.	Fluid escapes from the aeration hole of the housing top part.
Fault location			
Fluid removal points (consumer)	Too little fluid removal. Reset inlet pressure accordingly.	Too much fluid removal. Reset inlet pressure accordingly.	
Lines	Check the lines to see whether there is free discharge behind the valve; clean if necessary.		
Pump		Check whether the pump is working properly.	
Diaphragm			Replace defective diaphragm.

GRACO	DUISBURGER STR. 7
VERFAHRENSTECHNIK GMBH	D-33647 BIELEFELD
DRUCKREGELVENTIL <input type="checkbox"/> A <input type="checkbox"/> I	HERSTELL-NR.
MATERIALTEMPERATUR MAX [B] °C	<input type="text"/>
MATERIALEINGANGSDRUCK MAX [C] bar	<input type="text"/>
EINSTELDRUCKBEREICH <input type="checkbox"/> D <input type="checkbox"/> bar	<input type="text"/>

We recommend recording the data here of the supplied pressure regulation valve from the original nameplate.

Footnote

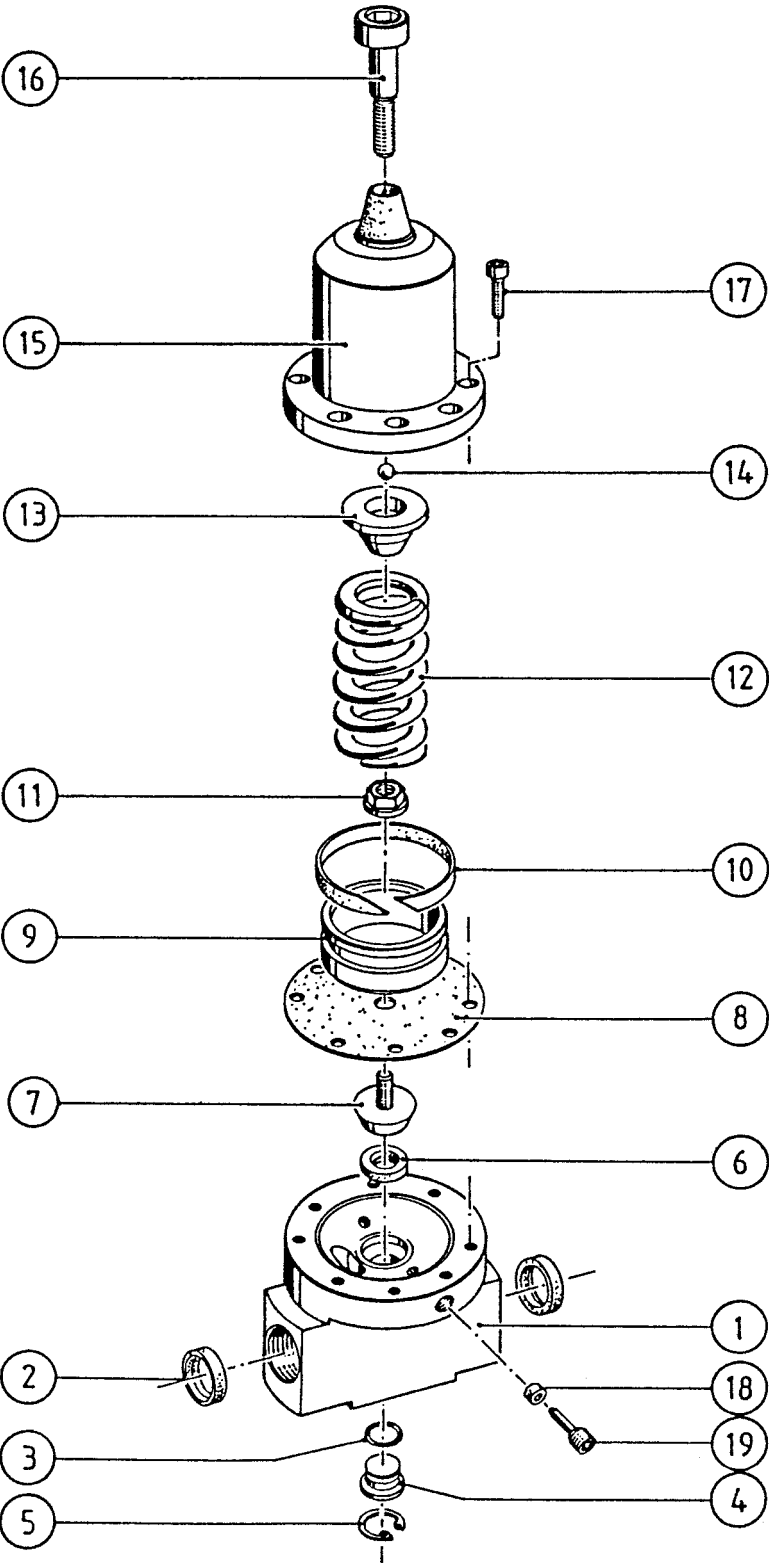
This technical product description also serves as operating instructions.

Associated documentation

For accessories see sales catalogue
List of replacement parts B.12.45.05-E

GRACO N.V.
Industrieterrein "Oude Bunders"
Loc. 2206 - Slakweidestraat 31
3630 Maasmechelen - Belgium
Tel.: 32 89 770 700 Fax: 32 89 770 777

PRESSURE REGULATION VALVE P20-RM DN13



Note protection mark in accordance with DIN 34

Subject to change

Page 1 of 2

Prepared 09.11.94 IG.	USER INFORMATION - PARTS -	Issued 09.99
Checked 09.11.94 IG.		B.12.45.05-E

PRESSURE REGULATION VALVE P20-RM DN13

Ref. nbr.	Qty	Part Nbr.	Description	Dimensions	Identification.					
					A	D	K	M	V	W
		79636 010002	Pressure regulation valve P20-RM DN13							
			Valve seat and tappet							
			Made of nitrogen hardened SST							
		79636 010003	Pressure regulation valve P20-RM DN13							
			Valve seat and tappet							
			Made of hardened steel G 10							
1	1	76504 011002	Housing bottom part							
2	2	76104 149002	Seal	18 x 30 x 9		X				
3	1	74186 024020	O-ring	11 x 2 B		X				
4	2	76145 036002	Plug	D 13,95						
5	1	74124 011000	Retaining ring	18 x 1						
6	1	76275 021002	Valve seat	Nitrogen hardened SST					X	
6	1	76275 021003	Valve seat	Hardened steel G 10					X	
7	1	76277 014002	Valve tappet	Nitrogen hardened SST					X	
7	1	77277 015002	Valve tappet	Hardened steel G 10			X		X	
8	1	76196 065001	Flat diaphragm	D 83 x T 0,65		X			X	
9	1	76561 025001	Spring guide	D 41						
10	1	75739 078002	Packing	8 x 1.5 x 143					X	
11	1	75083 001006	Hexagonal collar nut	Seal Lock M 8						
12	1	76313 093001	Spring	31 x 9 x 58.5					X	
13	1	76642 028001	Spring support	D 21						
14	1	74824 013090	Ball	Ø 6						
15	1	77502 002001	Housing top part				X			
16	1	76007 016001	Cheese head screw	M 8 x 34						
17	8	74006 007033	Cheese head screw	M 5 x 16						
18	1	76188 007001	Seal	4 x 8.5 x 5		X				
19	1	76051 011002	Set screw	G 1/8 x 25						

A = Replacement part M = Assembly tool
 D = Seal V = Wear part
 K = Supplied as complete set W = Maintenance part

Subject to change

GRACO STANDARD WARRANTY

Graco warrants all equipment referenced in this document which is manufactured by Graco and bearing its name to be free from defects in material and workmanship on the date of sale by an authorized Graco distributor to the original purchaser for use. With the exception of any special, extended, or limited warranty published by Graco, Graco will, for a period of twelve months from the date of sale, repair or replace any part of the equipment determined by Graco to be defective. This warranty applies only when the equipment is installed, operated and maintained in accordance with Graco's written recommendations.

This warranty does not cover, and Graco shall not be liable for general wear and tear, or any malfunction, damage or wear caused by faulty installation, misapplication, abrasion, corrosion, inadequate or improper maintenance, negligence, accident, tampering, or substitution of non-Graco component parts. Nor shall Graco be liable for malfunction, damage or wear caused by the incompatibility of Graco equipment with structures, accessories, equipment or materials not supplied by Graco, or improper design, manufacture, installation, operation or maintenance of structures, accessories, equipment or materials not supplied by Graco.

This warranty is conditioned upon the repaid return of equipment claimed to be defective to an authorized Graco distributor for verification of claimed defect. If the claimed defect is verified, Graco will repair or replace free of charge any defective parts. The equipment will be returned to the original purchaser transportation prepaid. If inspection of the equipment does not disclose any defect in material or workmanship, repairs will be made at a reasonable charge, which charges may include the costs of parts, labor, and transportation.

THIS WARRANTY IS EXCLUSIVE, AND IS IN LIEU OF ANY OTHER WARRANTIES, EXPRESS OR IMPLIED, INCLUDING BUT NOT LIMITED TO WARRANTY OF MERCHANTABILITY OR WARRANTY OF FITNESS FOR A PARTICULAR PURPOSE.

Graco's sole obligation and buyer's sole remedy for any breach of warranty shall be as set forth above. The buyer agrees that no other remedy (including, but not limited to, incidental or consequential damages for lost profits, lost sales, injury to person or property, or any other incidental or consequential loss) shall be available. Any action for breach of warranty must be brought within two (2) years of the date of sale.

Graco does not extend its warranty to accessories, appliances, materials or components which are sold by Graco but are not manufactured by Graco and makes no guarantee, however implied, with regard to the brand capability and suitability for a certain purpose. These parts sold by Graco but not manufactured by Graco (such as electric motors, switches, hoses, etc.) are covered by the warranties of the respective manufacturers. Graco will support the buyer in enforcing any warranty claim with the proviso that in no event can Graco be made liable for indirect, incidental, special or consequential damages which arise from the supply of appliances by Graco under the conditions governed by these provisions, or the supply, performance or use of any products or other goods which are sold under the conditions governed by these provisions, whether as the result of breach of contract, breach of warranty, negligence on the part of Graco or for any other reason.

GRACO N.V.

Industrieterrein "Oude Bunders"

Loc. 2206 - Slakweidestraat 31

3630 Maasmechelen – Belgium

Tel.: 32 89 770 700 Fax: 32 89 770 777

