

PRESSURE REGULATION VALVE
P2-RM – P10-RM – P20-RM

Manually regulated pressure regulation valve for liquid materials. In particular for paints at operating temperature within a viscosity range of 30 to 1500 mm²/s (cSt).

In special cases and with agreement the range can be extended.

Description

The pressure regulation valve essentially consists of the housing bottom part ① with valve seat ② and fluid connection holes ③ as well as the housing top part ④ with pressure spring ⑤, spring guide (spring cap) ⑥ and regulating key ⑦.

A diaphragm ⑧ is fitted as a separating element (fluid space/spring space) between the housing top part and bottom part.

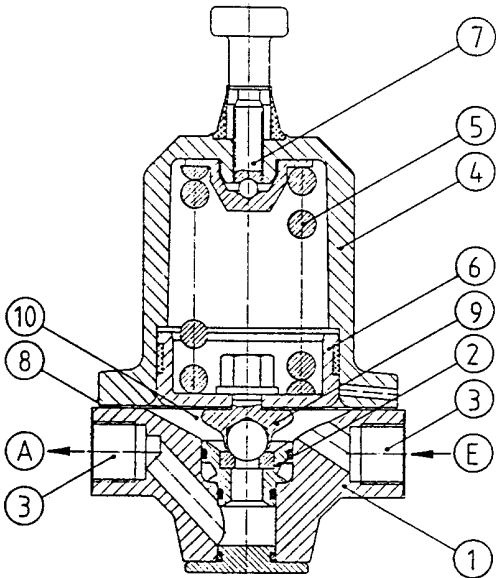
The valve tappet ⑨ connects the diaphragm to the spring cap and ensures the transmission of the diaphragm movement to the pressure spring.

The pressure regulation valve is fitted in circulation circuits.

During operation, the fluid under pressure flows from the inlet (E) to the diaphragm space ⑩ and from there via the valve seat to the outlet (A).

Changes in the fluid inlet pressure, eg. due to removal, are transmitted to the pressure spring by the movement of the diaphragm and have an effect on the cross-section in the valve seat through the valve tappet.

In this way consumers connected to the system are protected from pressure interruptions and large pressure fluctuations in the circuit can be avoided.



Replacement for issue of 02.96
Subject to change

Prepared by 08.09.99 Stengele	USER INFORMATION - TECHN. PRODUCT DESCRIPTION -	Issued 10.99
Checked by 19.10.99 Kuhn		B.12.30.01-P

Note protection mark in accordance with DIN 34

Commissioning, Operation

All pressure regulation valves are tested for operation with an anti-corrosion liquid after factory assembly.

When commissioning, the residues of this anti-corrosion liquid as well as contaminants that are unavoidable during the assembly of the system, should be thoroughly flushed out with a suitable solvent (detergent).

Before prolonged shutdown (holidays), the pressure regulation valves should also be flushed and the detergent left in the system until the next time it is used.

Faults and their causes

<div>Fault</div> <div>Fault location</div>	Inlet pressure exceeds the set value.	Inlet pressure is falling.	Fluid escapes from the aeration hole of the housing top part.
Fluid removal points (consumer)	Too little fluid removal. Reset inlet pressure accordingly.	Too much fluid removal. Reset inlet pressure accordingly.	
Lines	Check the lines to see whether there is free discharge behind the valve; clean if necessary.		
Pump		Check whether the pump is working properly.	
Diaphragm			Replace defective diaphragm.

GRACO	DUISBURGER STR. 7
VERFAHRENSTECHNIK GMBH	D-33647 BIELEFELD
DRUCKREGELVENTIL <input type="text"/> A <input type="text"/> I	HERSTELL-NR.
MATERIALTEMPERATUR MAX [B] °C	<input type="text"/>
MATERIALEINGANGSDRUCK MAX [C] bar	<input type="text"/>
EINSTELDRUCKBEREICH <input type="text"/> D <input type="text"/> bar	<input type="text"/>

We recommend that the data of the supplied pressure regulation valve on the original nameplate should be recorded here.

Footnote

This technical product description also serves as operating instructions.

Associated documentation

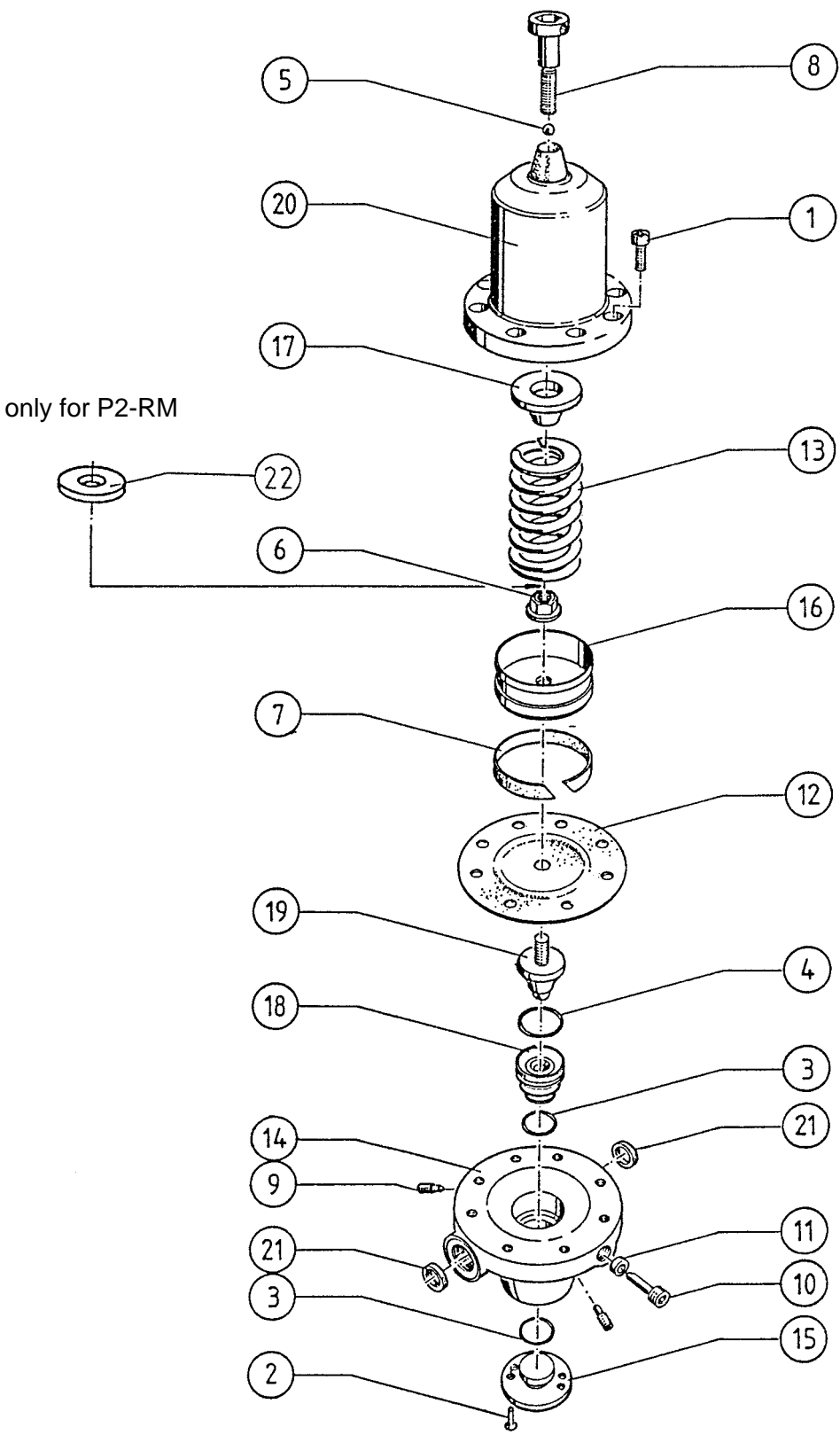
List of part illustrations

List of replacement parts B.12.30.02-E

GRACO N.V.
Industrieterrein "Oude Bunders"
Loc. 2206 - Slakweidestraat 31
3630 Maasmechelen - Belgium
Tel.: 32 89 770 700 Fax: 32 89 770 777

**PRESSURE REGULATION VALVE
P2-RM - P10-RM - P20-RM**

SST basic model



Note protection mark in accordance with DIN 34

Subject to change

Page 1 of 2

Prepared 12.11.99 Stengele
Checked 12.11.99 Kuhn

**USER INFORMATION
- PARTS -**

Issued 11.99
B.12.30.02-E

PART Nbr. 79636 002004
PART Nbr. 79636 002005
PART Nbr. 79636 002007

A = Replacement part M = Assembly tool
D = Seal V = Wear part
K = Supplied as complete set W = Maintenance part

B.12.30.02-E

GRACO STANDARD WARRANTY

Graco warrants all equipment referenced in this document which is manufactured by Graco and bearing its name to be free from defects in material and workmanship on the date of sale by an authorized Graco distributor to the original purchaser for use. With the exception of any special, extended, or limited warranty published by Graco, Graco will, for a period of twelve months from the date of sale, repair or replace any part of the equipment determined by Graco to be defective. This warranty applies only when the equipment is installed, operated and maintained in accordance with Graco's written recommendations.

This warranty does not cover, and Graco shall not be liable for general wear and tear, or any malfunction, damage or wear caused by faulty installation, misapplication, abrasion, corrosion, inadequate or improper maintenance, negligence, accident, tampering, or substitution of non-Graco component parts. Nor shall Graco be liable for malfunction, damage or wear caused by the incompatibility of Graco equipment with structures, accessories, equipment or materials not supplied by Graco, or improper design, manufacture, installation, operation or maintenance of structures, accessories, equipment or materials not supplied by Graco.

This warranty is conditioned upon the repaid return of equipment claimed to be defective to an authorized Graco distributor for verification of claimed defect. If the claimed defect is verified, Graco will repair or replace free of charge any defective parts. The equipment will be returned to the original purchaser transportation prepaid. If inspection of the equipment does not disclose any defect in material or workmanship, repairs will be made at a reasonable charge, which charges may include the costs of parts, labor, and transportation.

THIS WARRANTY IS EXCLUSIVE, AND IS IN LIEU OF ANY OTHER WARRANTIES, EXPRESS OR IMPLIED, INCLUDING BUT NOT LIMITED TO WARRANTY OF MERCHANTABILITY OR WARRANTY OF FITNESS FOR A PARTICULAR PURPOSE.

Graco's sole obligation and buyer's sole remedy for any breach of warranty shall be as set forth above. The buyer agrees that no other remedy (including, but not limited to, incidental or consequential damages for lost profits, lost sales, injury to person or property, or any other incidental or consequential loss) shall be available. Any action for breach of warranty must be brought within two (2) years of the date of sale.

Graco does not extend its warranty to accessories, appliances, materials or components which are sold by Graco but are not manufactured by Graco and makes no guarantee, however implied, with regard to the brand capability and suitability for a certain purpose. These parts sold by Graco but not manufactured by Graco (such as electric motors, switches, hoses, etc.) are covered by the warranties of the respective manufacturers. Graco will support the buyer in enforcing any warranty claim with the proviso that in no event can Graco be made liable for indirect, incidental, special or consequential damages which arise from the supply of appliances by Graco under the conditions governed by these provisions, or the supply, performance or use of any products or other goods which are sold under the conditions governed by these provisions, whether as the result of breach of contract, breach of warranty, negligence on the part of Graco or for any other reason.

GRACO N.V.

Industrieterrein "Oude Bunders"

Loc. 2206 - Slakweidestraat 31

3630 Maasmechelen – Belgium

Tel.: 32 89 770 700 Fax: 32 89 770 777

