

Hopper Kit 24B250 for FinishPro™ 290 Sprayer

313606A

- This manual contains kit installation instructions only -



Important Safety Instructions

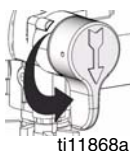
For detailed sprayer information and warnings, see Operation manual 313316 included with FinishPro 290 Sprayer.

Pressure Relief Procedure



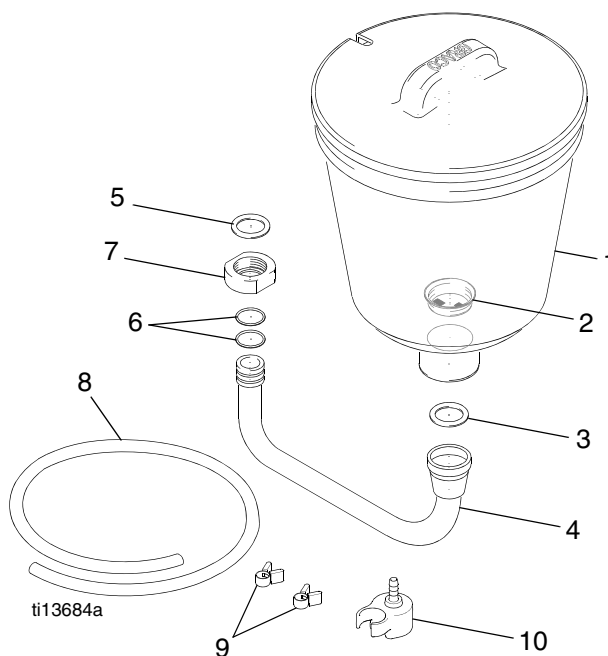
To help prevent injection injuries, follow this procedure when you stop spraying and before you service or clean the sprayer, remove parts, or repair leaks.

1. Turn Power switch OFF. Unplug sprayer.
2. Turn Spray/Prime valve to PRIME to relieve pressure. Turn pressure control knob left (counterclockwise) to minimize pressure.
3. Trigger gun.
4. Put trigger safety in safety ON position.



NOTE: Leave Spray/Prime valve in the PRIME position until you are ready to spray again.

If you suspect that the spray tip or hose is completely clogged or that pressure has not been fully relieved after following the steps above, VERY SLOWLY loosen the tip guard retaining nut or hose end coupling to relieve pressure gradually. Then loosen it completely. Clear the tip or hose obstruction.

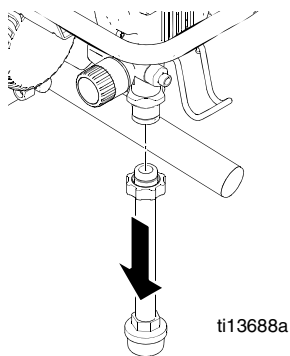


Ref.	Part	Description	Qty.
1	188787	HOPPER, 1.5 gallon	1
2	112133	SCREEN, hopper	1
3	104938	PACKING, o-ring	1
4	257518	TUBE, inlet hopper	1
5	15B652	WASHER, suction	1
6	117559	O-RING	2
7	15E813	NUT, jam	1
8	15Y587	TUBE, drain, hopper kit	1
9	115489	CLAMP, drain tube	2
10	244035	DEFLECTOR, barbed	1

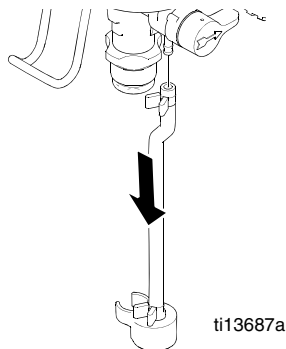
Hopper Kit 24B250

Installation

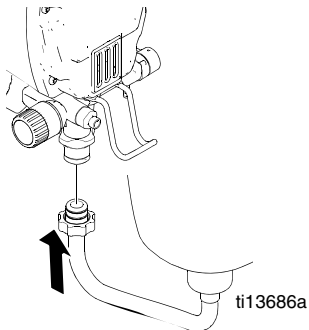
1. Relieve pressure.
2. Loosen jam nut and remove suction set.



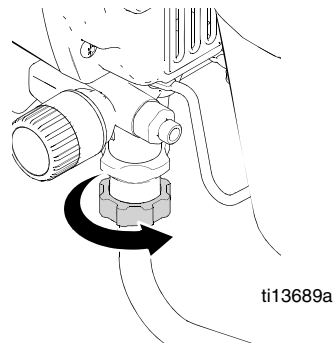
3. Remove drain tube.



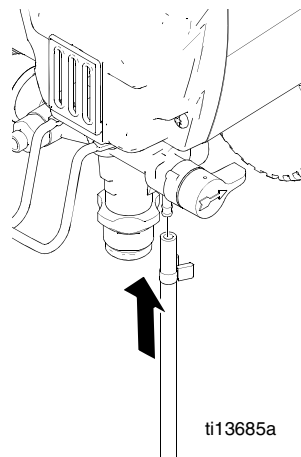
4. Remove hopper lid. Insert hopper into pump.



5. Tighten jam nut until hopper does not move.



6. Replace drain tube with longer tube and place into hopper. Push drain tube fully onto barbs with hose clamps in place.



7. Replace hopper lid.

All written and visual data contained in this document reflects the latest product information available at the time of publication. Graco reserves the right to make changes at any time without notice.

This manual contains English. MM 313606

Graco Headquarters: Minneapolis
International Offices: Belgium, China, Japan, Korea

GRACO INC. P.O. BOX 1441 MINNEAPOLIS, MN 55440-1441

Copyright 2009, Graco Inc. is registered to ISO 9001
www.graco.com