

SG10 Spray Guns

Model: 255107

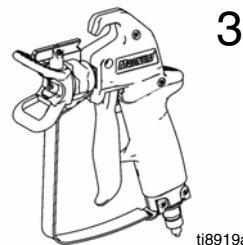
Maximum Working Pressure: 3600 psi (248 bar, 24.8 MPa)



311977 rev. C



IMPORTANT SAFETY INSTRUCTIONS. Refer to your sprayer instruction manual for Pressure Relief, priming and spray instructions. Keep these instructions.



ti8919a

- For the application of architectural paints and coatings -

The following Warnings are for the setup, use, grounding, maintenance and repair of this equipment. The exclamation point symbol alerts you to a general warning and hazard symbols refer to procedure-specific risks. Refer back to these Warnings. Additional, product-specific warnings may be found throughout the body of this manual where applicable.



WARNINGS



SKIN INJECTION HAZARD

High-pressure fluid from gun, hose leaks, or ruptured components will pierce skin. This may look like just a cut, but it is a serious injury that can result in amputation. **Get immediate surgical treatment.**

- Do not point gun at anyone or at any part of the body.
- Do not put your hand over the spray tip.
- Do not stop or deflect leaks with your hand, body, glove, or rag.
- Do not spray without tip guard and trigger guard installed.
- Engage trigger lock when not spraying.
- Follow **Pressure Relief Procedure** in this manual, when you stop spraying and before cleaning, checking, or servicing equipment.



FIRE AND EXPLOSION HAZARD

Flammable fumes, such as solvent and paint fumes, in **work area** can ignite or explode. To help prevent fire and explosion:

- Use equipment only in well ventilated area.
- Eliminate all ignition sources; such as pilot lights, cigarettes, portable electric lamps, and plastic drop cloths (potential static arc).
- Keep work area free of debris, including solvent, rags and gasoline.
- Do not plug or unplug power cords, or turn power or light switches on or off when flammable fumes are present.
- Ground all equipment in the work area. See **Grounding** instructions.
- Use only grounded hoses.
- Hold gun firmly to side of grounded pail when triggering into pail.
- If there is static sparking or you feel a shock, **stop operation immediately**. Do not use equipment until you identify and correct the problem.
- Keep a working fire extinguisher in the work area.



EQUIPMENT MISUSE HAZARD

Misuse can cause death or serious injury.

- Do not operate the unit when fatigued or under the influence of drugs or alcohol.
- Do not exceed the maximum working pressure or temperature rating of the lowest rated system component. See **Technical Data** in all equipment manuals.
- Use fluids and solvents that are compatible with equipment wetted parts. See **Technical Data** in all equipment manuals. Read fluid and solvent manufacturer's warnings. For complete information about your material, request MSDS forms from distributor or retailer.
- Check equipment daily. Repair or replace worn or damaged parts immediately with genuine manufacturer's replacement parts only.
- Do not alter or modify equipment.
- Use equipment only for its intended purpose. Call your distributor for information.
- Route hoses and cables away from traffic areas, sharp edges, moving parts, and hot surfaces.
- Do not kink or over bend hoses or use hoses to pull equipment.
- Keep children and animals away from work area.
- Comply with all applicable safety regulations.



PRESSURIZED ALUMINUM PARTS HAZARD

Do not use 1,1,1-trichloroethane, methylene chloride, other halogenated hydrocarbon solvents or fluids containing such solvents in pressurized aluminum equipment. Such use can cause serious chemical reaction and equipment rupture, and result in death, serious injury, and property damage.



PERSONAL PROTECTIVE EQUIPMENT

You must wear appropriate protective equipment when operating, servicing, or in the operating area of the equipment to help protect you from serious injury. This equipment includes but is not limited to:

- Protective eyewear
- Clothing and respirator as recommended by the fluid and solvent manufacturer
- Gloves
- Hearing protection

Pressure Relief Procedure



WARNING



Follow this **Pressure Relief Procedure** whenever instructed to relieve pressure, stop spraying, check or service equipment, or install or clean spray tip.

1. Turn OFF power and turn sprayer pressure control to low-est pressure setting.
2. Hold gun against side of grounded metal flushing pail. Trigger gun into pail to relieve pressure.

If you suspect spray tip or hose is clogged or that pressure has not been fully relieved after following the steps above, VERY SLOWLY loosen tip guard retaining nut or hose end coupling to relieve pressure gradually, then loosen completely. Clear hose or tip obstruction.

Gun Trigger Lock



WARNING



To prevent injury when the gun is not in use, always set the gun's trigger lock if unit is being shut down or left unattended.

Trigger Locked
(no spray)



Trigger Unlocked
(spray)



Setup



WARNING

Make sure sprayer is turned off and unplugged from power source. Refer to your sprayer instruction manual for priming and spray instructions.

Connect Gun to Sprayer

1. Attach supply hose to sprayer fluid outlet.
2. Attach other end of supply hose to gun's bottom fitting. Use two wrenches (one on the bottom fitting and one on the hose), to tighten all connections securely.
3. Refer to sprayer instruction manual for priming instructions.

Installing Tip (16) and Guard (15) on Gun



WARNING



1. If equipment has recently been operated, **relieve pressure**. Set trigger lock.
2. Using a pencil or similar object, insert seat (17) into back of guard (15).
3. Install guard (15) over end of gun. Tighten retaining nut.
4. Insert tip (16) into slot on guard (15).

Operation

Spraying

1. Unlock trigger lock.
2. Be sure the arrow shaped tip (16) faces forward (spray).
3. Hold gun perpendicular and approximately 12-inches (304 mm) from surface. Move gun first, then pull gun trigger to spray a test pattern.
4. Slowly increase pump pressure until coverage is uniform and even (see sprayer instruction manual for additional information).

Aligning Spray



WARNING



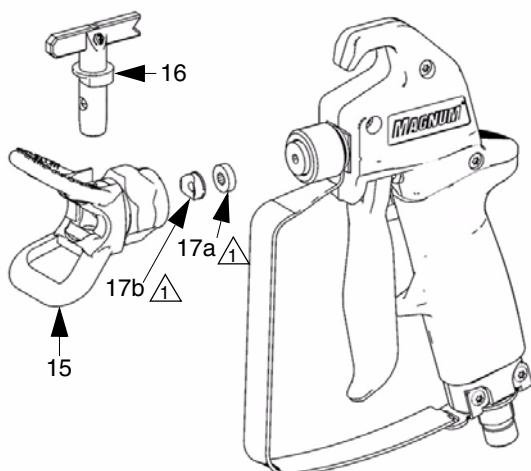
1. **Relieve pressure**. Set trigger lock.
2. Loosen guard retaining nut.
3. Align guard (15) horizontally to spray a horizontal pattern.
4. Align guard (15) vertically to spray a vertical pattern.

Clearing Clogs



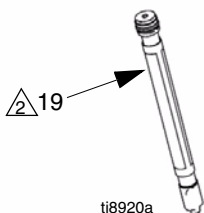
WARNING

1. **Relieve pressure**. Set trigger lock.
2. Rotate tip (16) 180°. Unlock trigger lock. Trigger gun into pail or onto ground to remove clog.
3. Set trigger lock. Rotate tip (16) 180° back to spray position.



△1 Always replace the gasket and seat (included with tip) when you replace a worn spray tip. See **Installing Tip (16) and Guard (15) on Gun**, page 2.

△2 Clean the spray gun fluid filter with compatible solvent and a brush every time you flush the system.



| Ref No. | Part. No. | Description | Qty |
|---------|-----------|--|-----|
| 15 | 237859 | GUARD, RAC IV; 7/8 in. (22 mm) thread | 1 |
| 16 | 221515 | TIP, spray, 515, 0.015 in. (0.381 mm) orifice; 10-12 in. (254-304.8 mm) fan (includes 17a and 17b) | 1 |
| 17 | 243004 | KIT, repair, gasket (includes 17a to 17b) | 1 |
| 17a | | GASKET, tip, black rubber | 1 |
| 17b | | SEAT, cylinder | 1 |
| 19 | 288748 | FILTER, 2-pack, 60 & 100 mesh | 1 |

Maintenance



WARNING

Before performing any maintenance on gun, read all warnings on front cover of this manual and relieve pressure.

Cleaning/Replacing Filter (19)

1. Relieve pressure. Set trigger lock.
2. Unscrew hose from gun at gun swivel.
3. Remove filter (19).
4. Clean filter. Use a soft brush to loosen and remove excess debris.
5. Insert clean filter into handle.

Cleanup

CAUTION

- **Never** soak gun in solvent.
- Do not leave the gun or any parts in water or cleaning solvents.

Flush gun after each work shift and store in a dry location.

To clean the handle grip, use water and a brush. For tougher stains, use a rag wetted in paint thinner or mineral spirits to scrub off paint. Do not operate until solvents have evaporated. To preserve life of the handle grip, do not stretch or pull grip from edges

For complete warranty information contact your local Graco distributor, call Graco customer service: 1-800-690-2894 or visit our website: www.graco.com.

*All written and visual data contained in this document reflects the latest product information available at the time of publication.
Graco reserves the right to make changes at any time without notice.*

This manual contains English. MM 311977

Graco Headquarters: Minneapolis

International Offices: Belgium, China, Japan, Korea

GRACO INC. P.O. BOX 1441 MINNEAPOLIS, MN 55440-1441

01/2007, Revised 2/2007