

# Xtreme Sprayers Hopper Kit

311902 rev.A1

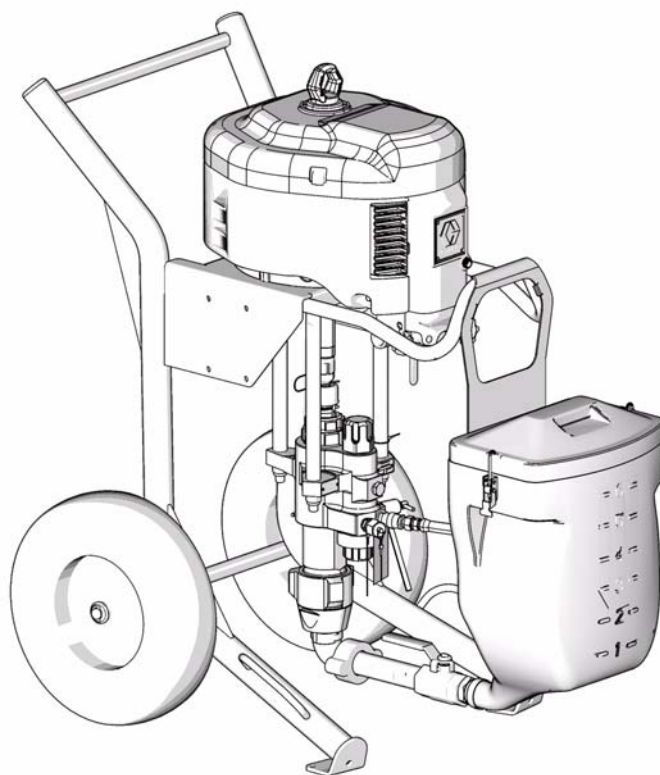
*For portable spray capability with Xtreme Sprayers.*

## Part 288347



### Important Safety Instructions

Read all warnings and instructions in manual 311164. Save those instructions.

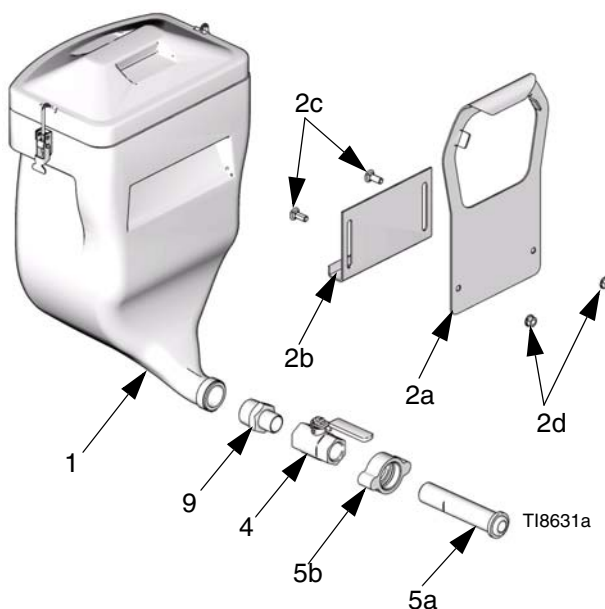


T18791a

PROVEN QUALITY. LEADING TECHNOLOGY.

## Hopper Kit Assembly

1. Hang hopper bracket (2a) on hose rack of cart.
2. Attach hanger bracket (2b) to hopper bracket (2a) using supplied bolts (2c) and nuts (2d).
3. Remove fitting supplied with (1) and replace with reducer (9).
4. Hang hopper (1) on bracket assembly. Adjust bracket assembly height as necessary.
5. Assemble fittings (4, 5) to hopper.
6. Attach quick disconnect fitting (5b) to fluid inlet on pump lower.
7. Adjust bracket assembly height as necessary.



## Hopper Kit 288347 Parts

Ref.	Part	Description	Qty.
1	234017	HOPPER, fluid	1
2	288603	BRACKET, hopper kit (includes 2a - 2d)	1
	2a	BRACKET, hopper	1
	2b	BRACKET, hanger, hopper	1
	2c	SCREW, cap, hex head	2
	2d	NUT, hex, flanged	2
4	118464	VALVE, ball	1
5	288604	FITTING, connection, hopper kit (includes 5a - 5b)	1
	5a	FITTING, connection	1
	5b	NUT, wing	1
9	C20465	FITTING, NIPPLE, reducing	1

*All written and visual data contained in this document reflects the latest product information available at the time of publication.  
Graco reserves the right to make changes at any time without notice.*

MM 311902

**Graco Headquarters:** Minneapolis  
**International Offices:** Belgium, China, Japan, Korea

**GRACO INC. P.O. BOX 1441 MINNEAPOLIS, MN 55440-1441**

www.graco.com

12/2006