

15H882 Slider Bearing Kit

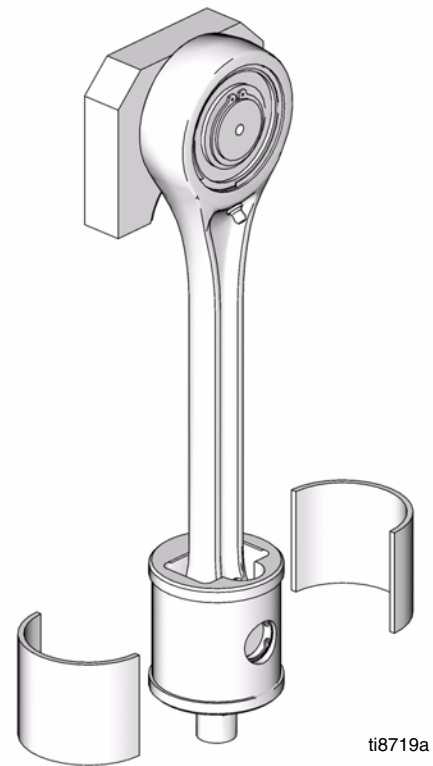
311616 rev.A

To replace slider bearings on E-Flo™ Plus Electric Circulation Pumps.






Important Safety Instructions

Read all warnings and instructions in this manual
and in E-Flo Plus Repair-Parts manual 311594.
Save these instructions.



PROVEN QUALITY. LEADING TECHNOLOGY.

Pressure Relief Procedure



System pressure can cause the pump to cycle unexpectedly, which could result in serious injury from splashing or moving parts.

1.


Set START/STOP switch to STOP.
2.

Push in SECURE DISABLE switch.
3.

Open the back pressure regulator and all fluid drain valves in the system, having a waste container ready to catch drainage. Leave open until you are ready to pressurize system again.
4.

Check that pressure gauges on fluid supply and return lines read zero. If gauges do not read zero, determine cause and carefully relieve pressure by VERY SLOWLY loosening a fitting. Clear obstruction before pressurizing system again.

Kit Parts





 Slider Bearing Kit 15H882 includes parts to rebuild both slider bearing assemblies. Parts included in the kit are marked with an asterisk, for example (5*). Use all the new parts in the kit.

Ref. No.	Part No.	Description	Qty
5*	n/a	SCREW, cap, socket-head; 5/8-11 x 3 in. (76 mm)	4
8*	n/a	SLIDER BEARING	4
12*	116719	SCREW, 8-32 hex washer head	4

Parts designated n/a are not available separately.

Kit Installation

Disassembly



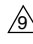
1.

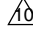
Jog the motor to bring the pump on the side being repaired to the bottom of its stroke. This provides access to the coupling nut (14).
2.

Relieve pressure, page 2.
3.

Shut off electrical power to the unit.
4.

Remove two screws (12) and the cover. FIG. 1 shows the cover (32) on the stand side; the motor side cover is (21).

-  9

Place clean rag over slider cylinder (2).
-  10

Hold slider piston (9) flats with 3/4 in. wrench, and brace against tie rod (3).

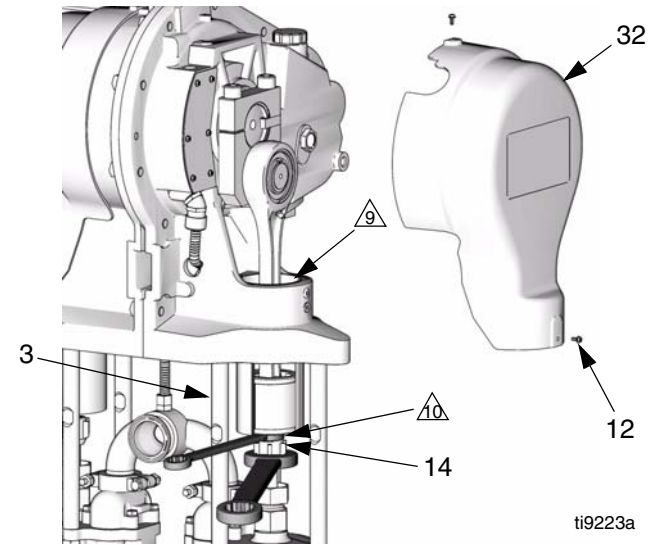
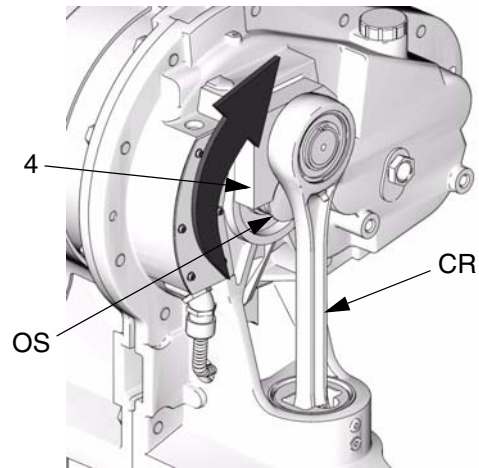


FIG. 1. Remove Coupling Nut

5. Place a clean rag over the top of the slider cylinder (2) to prevent debris from falling into the slider assembly during disassembly.
6. Place a 3/4 in. wrench on the slider piston (9) flats (just above the coupling nut), to keep the slider piston/connecting rod from turning when you are loosening the coupling nut (14). Orient the wrench so it is braced against one of the tie rods (3). Applying excessive force to the slider piston/connecting rod can shorten the life of the lower pin bearing.
7. Using a 1-5/8 in. open-end wrench, unscrew the coupling nut (14) from the slider piston (9) and let it slide down onto the pump piston rod. Be careful not to lose the collars (13).
8. See FIG. 2. Using a 1/2 in. hex driver, unscrew the two cap screws (5). Remove the crank arm cap (38) and key (39). If necessary, use a plastic hammer to break these parts loose.

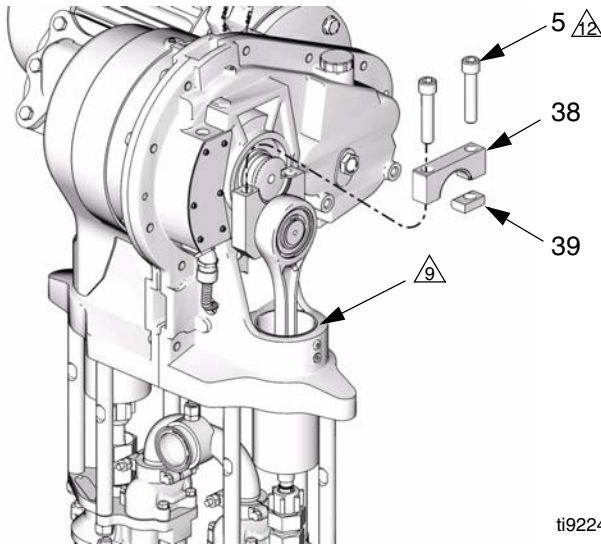


ti9225a

FIG. 3. Rotate Crank Arm

△₉ Place clean rag over slider cylinder (2).

△₁₂ Apply antiseize lubricant to screw (5) threads. Torque key-side screw to 210-230 ft-lb (283-310 N•m) first, then torque gap side screw to 210-230 ft-lb (283-310 N•m).



ti9224a

FIG. 2. Remove Crank Arm Cap

9. See FIG. 3. Rotate the crank arm (4) to allow it to be removed from the output shaft (OS).
10. Pull the crank arm/connecting rod/slider piston assembly (CR) up and out of the cylinder.
11. Remove the old bearings (8).

Reassembly

1. See FIG. 4. Install the two new bearings (8) on the slider piston (9). The joints between the bearings must align with the pin hole (PH) in the slider piston.

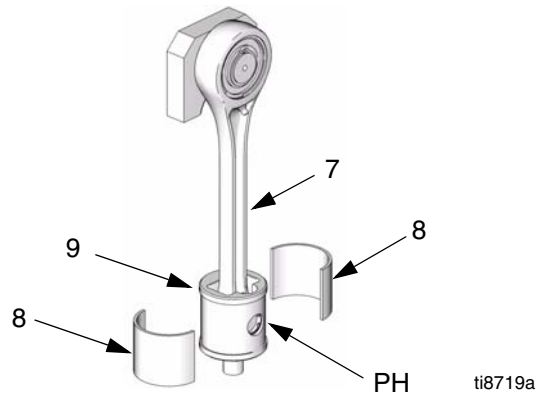


FIG. 4. Slider Bearings

2. Slide the piston (9) and connecting rod (7) into the cylinder (2).
3. Position the crank arm (4) to engage the output shaft (OS), and rotate it to the bottom of the output shaft.
4. Place a clean rag over the top of the slider cylinder (2) to prevent debris from falling into the slider assembly during reassembly.
5. See FIG. 5. Apply antiseize lubricant to the threads of the cap screws (5). Install the key (39), crank arm cap (38), and cap screws (5), oriented as shown. While the gap-side screw is still loose, torque the key-side screw to 210-230 ft-lb (283-310 N•m). Then torque the gap-side screw to 210-230 ft-lb (283-310 N•m).
6. Ensure that the collars (13) are in place in the coupling nut (14).
7. Place a 3/4 in. wrench on the flats of the slider piston (9), to keep it from turning when you are tightening the coupling nut (14). Orient the wrench so it is braced against one of the tie rods (3) or the pump stand. Tighten the coupling nut (14) onto the slider piston (9) and torque to 75-80 ft-lb (102-108 N•m).
8. Remove the rag. Reinstall the cover (32 or 21) and screws (12).
9. Repeat for the other side.

- ⚠ 9 Place clean rag over slider cylinder (2).
- ⚠ 12 Apply antiseize lubricant to screw (5) threads. Torque key-side screw to 210-230 ft-lb (283-310 N•m) first, then torque gap side screw to 210-230 ft-lb (283-310 N•m).

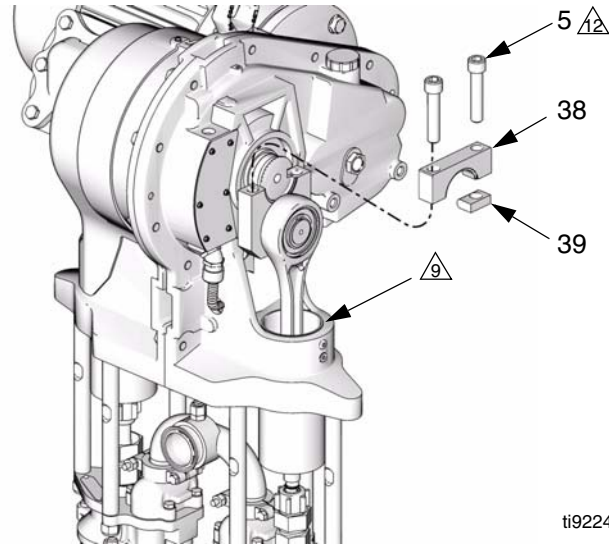


FIG. 5. Install Crank Arm Cap

Notes

This image shows a blank sheet of white paper with horizontal ruling lines. The lines are evenly spaced and run across the width of the page. There are no margins, text, or other markings on the paper.

Graco Standard Warranty

Graco warrants all equipment referenced in this document which is manufactured by Graco and bearing its name to be free from defects in material and workmanship on the date of sale to the original purchaser for use. With the exception of any special, extended, or limited warranty published by Graco, Graco will, for a period of twelve months from the date of sale, repair or replace any part of the equipment determined by Graco to be defective. This warranty applies only when the equipment is installed, operated and maintained in accordance with Graco's written recommendations.

This warranty does not cover, and Graco shall not be liable for general wear and tear, or any malfunction, damage or wear caused by faulty installation, misapplication, abrasion, corrosion, inadequate or improper maintenance, negligence, accident, tampering, or substitution of non-Graco component parts. Nor shall Graco be liable for malfunction, damage or wear caused by the incompatibility of Graco equipment with structures, accessories, equipment or materials not supplied by Graco, or the improper design, manufacture, installation, operation or maintenance of structures, accessories, equipment or materials not supplied by Graco.

This warranty is conditioned upon the prepaid return of the equipment claimed to be defective to an authorized Graco distributor for verification of the claimed defect. If the claimed defect is verified, Graco will repair or replace free of charge any defective parts. The equipment will be returned to the original purchaser transportation prepaid. If inspection of the equipment does not disclose any defect in material or workmanship, repairs will be made at a reasonable charge, which charges may include the costs of parts, labor, and transportation.

THIS WARRANTY IS EXCLUSIVE, AND IS IN LIEU OF ANY OTHER WARRANTIES, EXPRESS OR IMPLIED, INCLUDING BUT NOT LIMITED TO WARRANTY OF MERCHANTABILITY OR WARRANTY OF FITNESS FOR A PARTICULAR PURPOSE.

Graco's sole obligation and buyer's sole remedy for any breach of warranty shall be as set forth above. The buyer agrees that no other remedy (including, but not limited to, incidental or consequential damages for lost profits, lost sales, injury to person or property, or any other incidental or consequential loss) shall be available. Any action for breach of warranty must be brought within two (2) years of the date of sale.

GRACO MAKES NO WARRANTY, AND DISCLAIMS ALL IMPLIED WARRANTIES OF MERCHANTABILITY AND FITNESS FOR A PARTICULAR PURPOSE, IN CONNECTION WITH ACCESSORIES, EQUIPMENT, MATERIALS OR COMPONENTS SOLD BUT NOT MANUFACTURED BY GRACO. These items sold, but not manufactured by Graco (such as electric motors, switches, hose, etc.), are subject to the warranty, if any, of their manufacturer. Graco will provide purchaser with reasonable assistance in making any claim for breach of these warranties.

In no event will Graco be liable for indirect, incidental, special or consequential damages resulting from Graco supplying equipment hereunder, or the furnishing, performance, or use of any products or other goods sold hereto, whether due to a breach of contract, breach of warranty, the negligence of Graco, or otherwise.

FOR GRACO CANADA CUSTOMERS

The Parties acknowledge that they have required that the present document, as well as all documents, notices and legal proceedings entered into, given or instituted pursuant hereto or relating directly or indirectly hereto, be drawn up in English. Les parties reconnaissent avoir convenu que la rédaction du présente document sera en Anglais, ainsi que tous documents, avis et procédures judiciaires exécutés, donnés ou intentés, à la suite de ou en rapport, directement ou indirectement, avec les procédures concernées.

Graco Information

TO PLACE AN ORDER, contact your Graco distributor or call to identify the nearest distributor.

Phone: 612-623-6921 **or Toll Free:** 1-800-328-0211 **Fax:** 612-378-3505

*All written and visual data contained in this document reflects the latest product information available at the time of publication.
Graco reserves the right to make changes at any time without notice.*

MM 311616

Graco Headquarters: Minneapolis
International Offices: Belgium, China, Japan, Korea

GRACO INC. P.O. BOX 1441 MINNEAPOLIS, MN 55440-1441

www.graco.com

1/2007