

15H877 TDC Sensor Replacement Kit

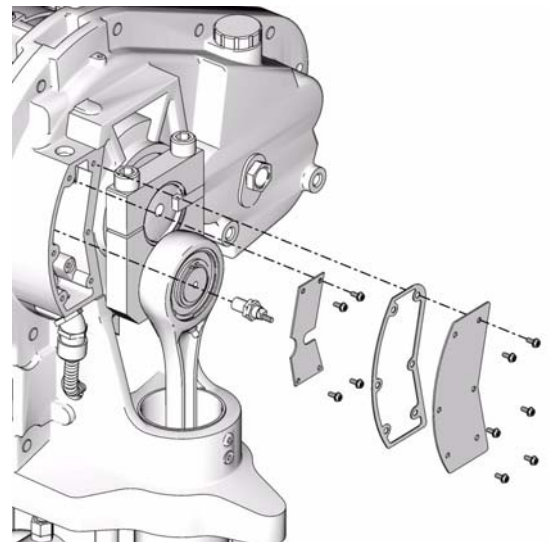
311601 rev.A

To replace TDC Sensor on E-Flo™ Plus Electric Circulation Pumps.



Important Safety Instructions

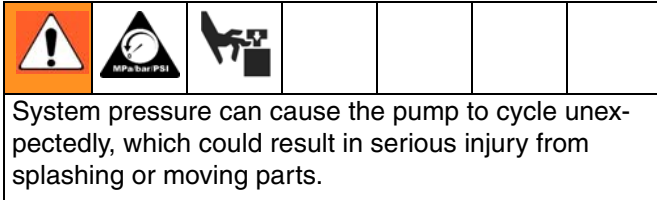
Read all warnings and instructions in this manual and in E-Flo Plus Repair-Parts manual 311594. Save these instructions.



ti8725a


PROVEN QUALITY. LEADING TECHNOLOGY.

Pressure Relief Procedure



1. Set START/STOP switch to STOP.
2. Push in SECURE DISABLE switch.
3. Open the back pressure regulator and all fluid drain valves in the system, having a waste container ready to catch drainage. Leave open until you are ready to pressurize system again.
4. Check that pressure gauges on fluid supply and return lines read zero. If gauges do not read zero, determine cause and carefully relieve pressure by VERY SLOWLY loosening a fitting. Clear obstruction before pressurizing system again.

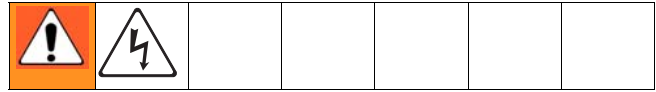
Kit Parts

 TDC Sensor Kit 15H877 includes the following parts to replace the TDC sensor. Parts included in the kit are marked with an asterisk, for example (12*). Use all the new parts in the kit.

Ref. No.	Part No.	Description	Qty
12*	116719	SCREW, 8-32 hex washer head	12
25b*	n/a	TDC SENSOR	1
33*	n/a	GASKET, circuit board	1


Parts designated n/a are not available separately.

Kit Installation



1. Jog the motor to bring the stand side lower to the bottom of its stroke.
2. Relieve pressure, page 2.
3. Shut off electrical power to the unit.
4. Remove two screws (12) and the cover (32).
5. See FIG. 1. Remove six screws (12), the circuit board cover (34), and the gasket (33).
6. Disconnect the transducer cable (25a) from J1 on the circuit board (25c).
7. Disconnect the TDC cable (25b) from J2 on the circuit board (25c).
8. Disconnect the IS circuit field wire from J2 and J3. See the Electrical Schematic in the E-Flo Plus Repair-Parts manual 311594.
9. Remove four screws (12) and the circuit board (25c).
10. Disconnect the TDC cable from J2 on the circuit board.
11. Unscrew the TDC sensor (25b) from the gear housing.

12. Apply pipe sealant and screw the TDC sensor (25b*) into the gear housing. Torque to 66-78 in-lb (7.4-8.8 N•m).

 TDC sensor nuts are locked in place to ensure correct positioning. Do not adjust.

13. Install the circuit board (25c) using four screws (12*).


14. Reconnect the TDC cable (25b*) to J2 on the circuit board (25c).

15. Reconnect the transducer cable (25a) to J1 on the circuit board (25c).

16. Reconnect the IS circuit field wire to J2 and J3. See the Electrical Schematic in the E-Flo Plus Repair-Parts manual 311594.

17. Install the new gasket (33*), the circuit board cover (34), and six screws (12*).

18. Reinstall the cover (32) with two screws (12*).

 Torque to 66-78 in-lb (7.4-8.8 N•m).

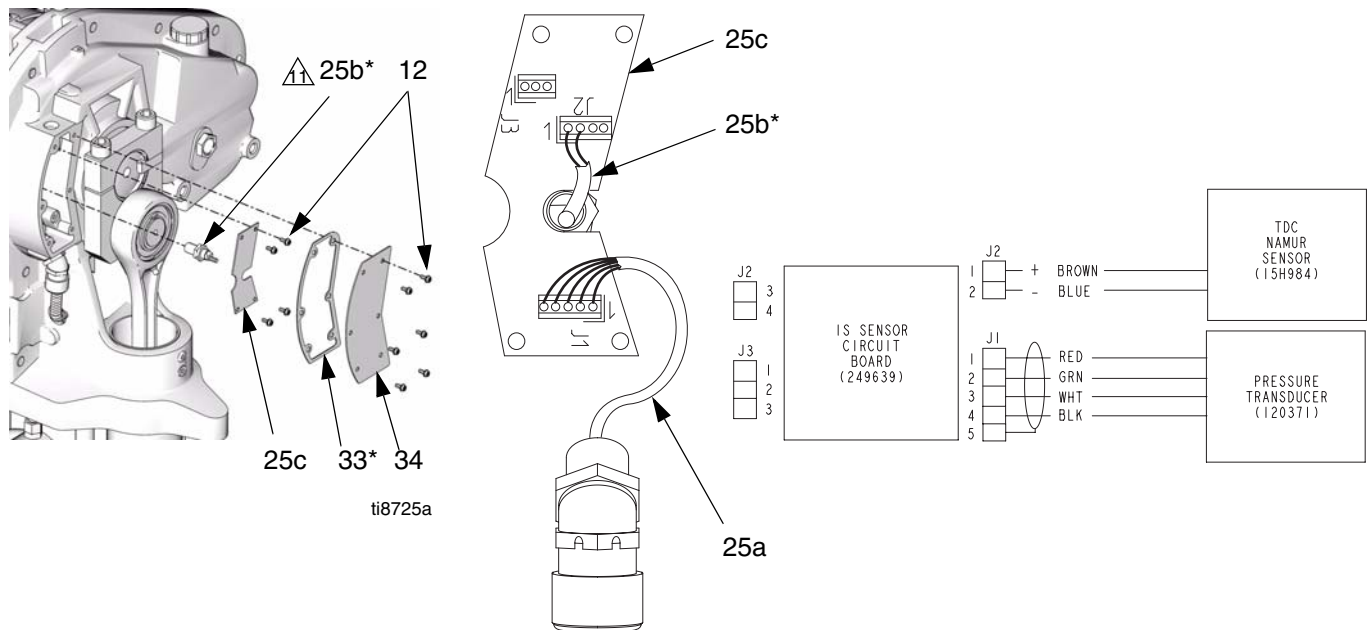


FIG. 1. TDC Sensor Kit

Graco Standard Warranty

Graco warrants all equipment referenced in this document which is manufactured by Graco and bearing its name to be free from defects in material and workmanship on the date of sale to the original purchaser for use. With the exception of any special, extended, or limited warranty published by Graco, Graco will, for a period of twelve months from the date of sale, repair or replace any part of the equipment determined by Graco to be defective. This warranty applies only when the equipment is installed, operated and maintained in accordance with Graco's written recommendations.

This warranty does not cover, and Graco shall not be liable for general wear and tear, or any malfunction, damage or wear caused by faulty installation, misapplication, abrasion, corrosion, inadequate or improper maintenance, negligence, accident, tampering, or substitution of non-Graco component parts. Nor shall Graco be liable for malfunction, damage or wear caused by the incompatibility of Graco equipment with structures, accessories, equipment or materials not supplied by Graco, or the improper design, manufacture, installation, operation or maintenance of structures, accessories, equipment or materials not supplied by Graco.

This warranty is conditioned upon the prepaid return of the equipment claimed to be defective to an authorized Graco distributor for verification of the claimed defect. If the claimed defect is verified, Graco will repair or replace free of charge any defective parts. The equipment will be returned to the original purchaser transportation prepaid. If inspection of the equipment does not disclose any defect in material or workmanship, repairs will be made at a reasonable charge, which charges may include the costs of parts, labor, and transportation.

THIS WARRANTY IS EXCLUSIVE, AND IS IN LIEU OF ANY OTHER WARRANTIES, EXPRESS OR IMPLIED, INCLUDING BUT NOT LIMITED TO WARRANTY OF MERCHANTABILITY OR WARRANTY OF FITNESS FOR A PARTICULAR PURPOSE.

Graco's sole obligation and buyer's sole remedy for any breach of warranty shall be as set forth above. The buyer agrees that no other remedy (including, but not limited to, incidental or consequential damages for lost profits, lost sales, injury to person or property, or any other incidental or consequential loss) shall be available. Any action for breach of warranty must be brought within two (2) years of the date of sale.

GRACO MAKES NO WARRANTY, AND DISCLAIMS ALL IMPLIED WARRANTIES OF MERCHANTABILITY AND FITNESS FOR A PARTICULAR PURPOSE, IN CONNECTION WITH ACCESSORIES, EQUIPMENT, MATERIALS OR COMPONENTS SOLD BUT NOT MANUFACTURED BY GRACO. These items sold, but not manufactured by Graco (such as electric motors, switches, hose, etc.), are subject to the warranty, if any, of their manufacturer. Graco will provide purchaser with reasonable assistance in making any claim for breach of these warranties.

In no event will Graco be liable for indirect, incidental, special or consequential damages resulting from Graco supplying equipment hereunder, or the furnishing, performance, or use of any products or other goods sold hereto, whether due to a breach of contract, breach of warranty, the negligence of Graco, or otherwise.

FOR GRACO CANADA CUSTOMERS

The Parties acknowledge that they have required that the present document, as well as all documents, notices and legal proceedings entered into, given or instituted pursuant hereto or relating directly or indirectly hereto, be drawn up in English. Les parties reconnaissent avoir convenu que la rédaction du présente document sera en Anglais, ainsi que tous documents, avis et procédures judiciaires exécutés, donnés ou intentés, à la suite de ou en rapport, directement ou indirectement, avec les procédures concernées.

Graco Information

TO PLACE AN ORDER, contact your Graco distributor or call to identify the nearest distributor.

Phone: 612-623-6921 **or Toll Free:** 1-800-328-0211 **Fax:** 612-378-3505

*All written and visual data contained in this document reflects the latest product information available at the time of publication.
Graco reserves the right to make changes at any time without notice.*

MM 311601

Graco Headquarters: Minneapolis
International Offices: Belgium, China, Japan, Korea

GRACO INC. P.O. BOX 1441 MINNEAPOLIS, MN 55440-1441

www.graco.com

1/2007