

Filter Accessory Kit 287995

228 bar (22,8 MPa, 3300psi) Maximum Working Pressure

311515 rev.A

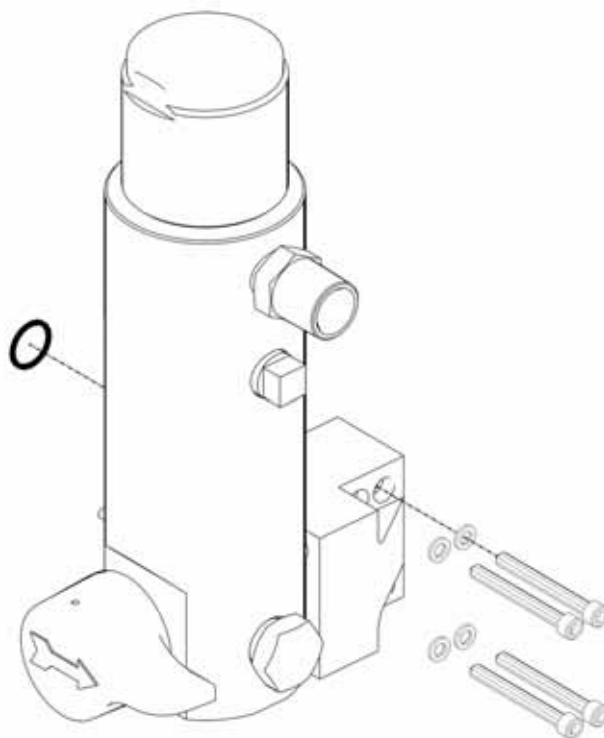


Important Safety Instructions

Read all warnings and instructions in this manual. Save these instructions

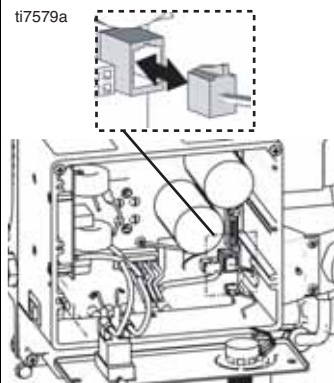
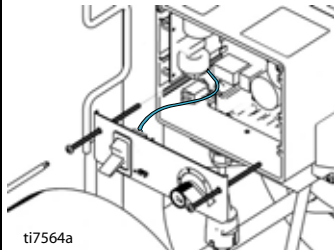
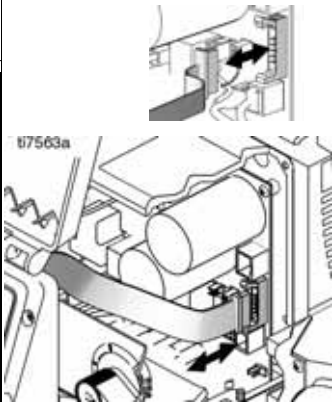
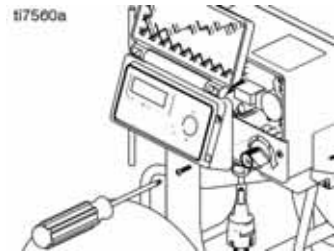


311421



PROVEN QUALITY. LEADING TECHNOLOGY.

Pressure Control Transducer Replacement



Removal

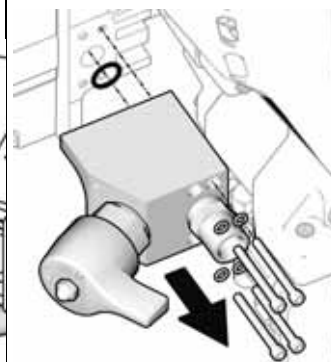
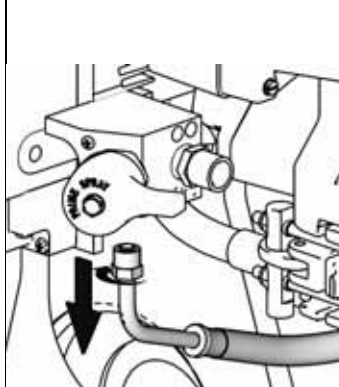
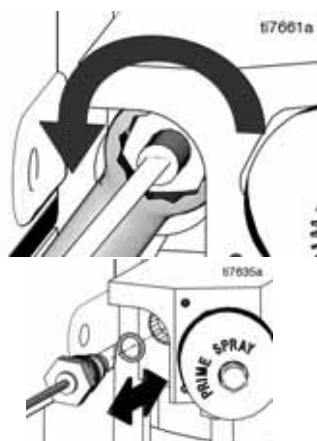
Warning: Do **Pressure Relief:** See Manual 311421. Unplug sprayer. Wait 5 minutes before servicing.

1 Remove four screws and cover.

2 Disconnect display connector from motor control board.

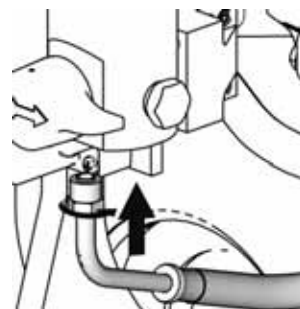
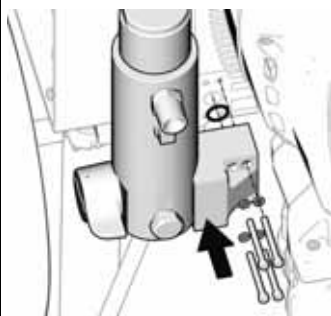
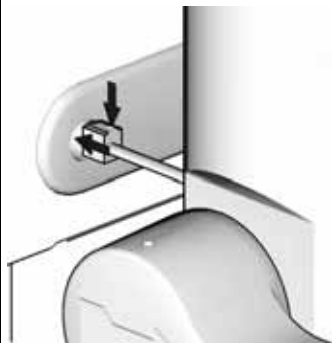
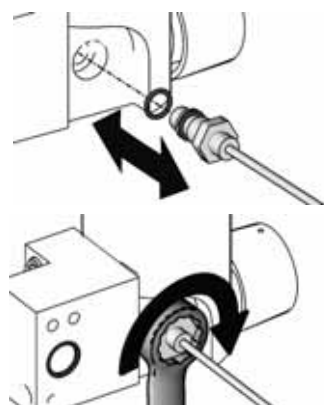
3 Remove two screws and allow control panel to hang.

4 Disconnect transducer connector from motor control board.



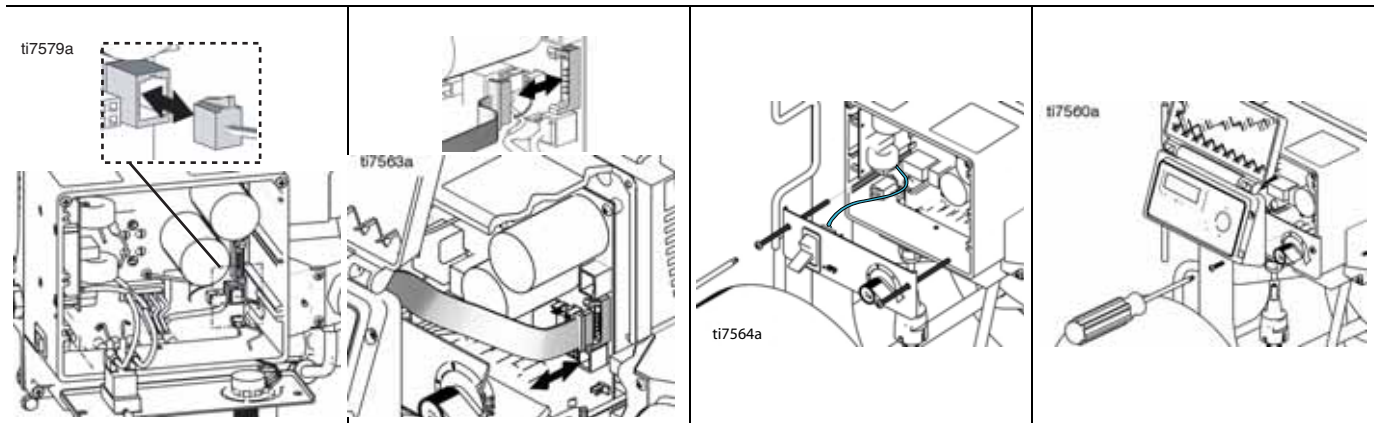
Removal

5	Remove two screws and transducer cover. Press tab on transducer connector and pull transducer wire through grommet.	6	Pass transducer wire through 3/4-in. box end wrench and remove transducer and o-ring from valve block.	7	Remove drain hose from valve block	8	Remove four screws, washers and valve block
---	---	---	--	---	------------------------------------	---	---



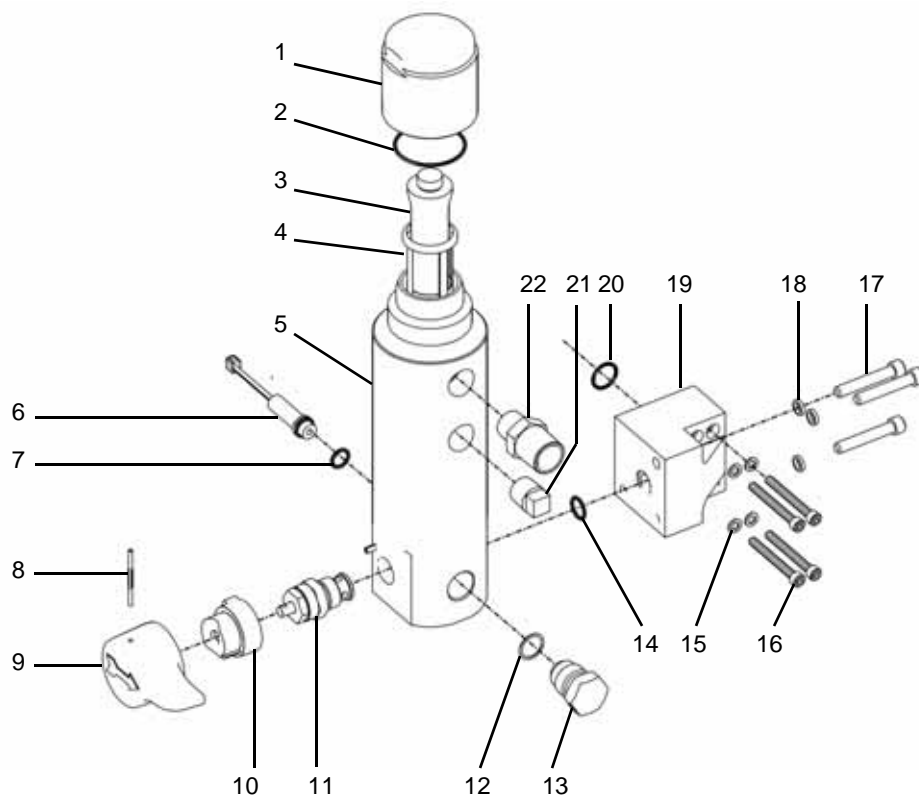
Installation

1	Install transducer and o-ring and in filter manifold. Torque to 47-61 N·m (35-45 ft-lb).	2	Press tab on transducer connector and push transducer wire through grommet.	3	Install o-ring. Install filter assembly with four washers and screws.	4	Connect drain hose
---	--	---	---	---	---	---	--------------------



Installation			
5	Connect transducer connector to motor control board.	6	Connect display connector to motor control board.
7	Install control panel with two screws.	8	Install cover with four screws.

Parts



Ref	Part	Description	Qty	Ref	Part	Description	Qty
1	15C765	CAP, filter	1	12	15D541	SEAL, washer	1
2	117285	PACKING, o-ring	1	13	248314	PLUG, auto clean, includes 14	1
3	15C766	TUBE, diffusion	1	14	107505	PACKING, o-ring	1
4	243984	FILTER, fluid	1	15	100020	WASHER, lock	4
5	15C838	BASE, filter	1	16	104459	SCREW, shcs 10-32 x 1.75	4
6	241732	TRANSDUCER, pressure control	1	17	15B588	SCREW, socket hd cap	3
7	111457	PACKING, o-ring	1	18	105510	WASHER, lock, spring (hi-collar)	3
8	15C972	PIN, grooved	1	19	15G488	BLOCK, filter	1
9	15C780	HANDLE	1	20	117517	O-RING	1
10	224807	BASE, valve	1	21	104813	PLUG, pipe	1
11	224806	VALVE, drain	1	22	159239	FITTING, nipple, pipe, rdcg	1

TO PLACE AN ORDER, contact your Graco distributor, or call **1-800-690-2894** to identify the nearest distributor.

All written and visual data contained in this document reflects the latest product information available at the time of publication.
Graco reserves the right to make changes at any time without notice.

This manual contains English, French, Spanish, Italian and Dutch; mm 311515

Graco Headquarters: Minneapolis
International Offices: Belgium, China, Japan, Korea
GRACO INC. P.O. BOX 1441 MINNEAPOLIS, MN 55440-1441
www.graco.com
 6/2006, Audited 6/2006