

Motor/Drive Housing and Motor Fan Replacement Kits

311301 rev.B

Use with MAGNUM XR, SR7 and ProX Model Sprayers

XR Motor/Drive Housing Replacement Kit: 287773

SR7 Motor/Drive Housing Replacement Kit: 289103



ProX Motor/Drive Housing Replacement Kit: 289104

XR, SR7, ProX Motor Fan Replacement Kit: 287770

XR Front Cover Replacement Kit: 245064

SR7 Front Cover Replacement Kit: 288708

ProX Front Cover Replacement Kit: 288692

						
---	---	--	--	--	--	--

To reduce the risk of fluid injection or splashing in the eyes or on the skin, relieve all fluid pressure in system before you install, remove, or replace any parts. See the **Pressure Relief Procedure** provided in your Operating Instruction manual.



Important Safety Instructions

Read all warnings and instructions in this manual. Save these instructions. For detailed sprayer information and warnings, see your Operation manual.

PROVEN QUALITY. LEADING TECHNOLOGY.



Motor/Drive Housing Replacement

Disassembly

1. Unplug electrical cord, and **relieve pressure**.
2. Remove the cover screws and front cover.
3. Remove yoke and guide rods.
4. Disconnect pressure control harness from control board connector at back of drive housing.

[and] **SR7 and ProX 7 and 9 models only**: also remove AutoPrime™ harness from control board connector at back of drive housing.

NOTE: Using fingernail or tip of small, flat-blade screwdriver, press tab on right side of connector to release.

5. Remove pump and the two mounting pins from drive housing.
6. Remove gear.
7. **XR/SR7 models**: Remove enclosure screws from both side enclosures. Fully remove left enclosure from sprayer. Pull right enclosure away from drive housing.

ProX7 and 9 models: Remove two screws from top of enclosure and remove enclosure.

NOTE: Take care to not pull on the leads from the electrical cord and the power switch.

8. Disconnect motor harness from back of control board.
9. Remove screw that holds control board, and remove control board from drive housing.
10. Use flat blade screwdriver to release detent and slide switch holder up.
11. Remove stand, cart legs, or frame from drive/motor housing.

Installation

- Read all **Installation Notes**, page 3 for your sprayer model. See illustration for your model on page 4 (**XR/SR7 models**) or 5 (**ProX models**).
 - To prevent misalignment, assemble with sprayer tipped onto back of enclosure.
1. Install stand, cart legs or frame on new drive/motor housing.

2. Install control board on new drive housing, and tighten control board mounting screw. See **Control Board Detail** for your sprayer model on page 4 (**XR/SR7 models**) or 5 (**ProX models**).
3. Plug new motor harness into back of control board.
4. Reinstall enclosure(s) on sprayer, and install and tighten enclosure mounting screws.
5. Install gear in new drive housing so teeth engage with drive pinion of motor.
6. Route pressure control wiring harness (see page 6) through retention clip and connect to control board connector at back of drive housing.

[and] **SR7 and ProX7 and 9 models only** (see page 6): also route AutoPrime wiring harness through AutoPrime cover and retention clip and connect to control board connector at back of drive housing.

7. Install pump on mounting pins. **Make sure the plastic washers are between the drive housing and the pump and that pressure control wires are not pinched between pump and motor housing.**
8. Install yoke with rod cap in slot of yoke, as shown in **Rod/Yoke Detail** for your sprayer model on page 4 (**XR/SR7 models**) or 5 (**ProX models**).
9. Check final assembly against Drive Train Detail for your sprayer model on page 4 (**XR/SR7 models**) or page 5 (**ProX models**).
10. Install front cover and cover screws.

Motor Fan Replacement

Disassembly

1. Unplug electrical cord, and **relieve pressure**.
2. XR/SR7 models: Remove enclosure screws from both side enclosures. Fully remove left enclosure from sprayer. Pull right enclosure away from drive housing.

ProX7 and 9 models: Remove two screws from top of enclosure and remove enclosure.

NOTE: Take care to not pull on the leads from the electrical cord and the power switch.

3. Pull retaining ring from motor shaft.
4. Remove clip fan from motor shaft.

Installation

1. Install new fan on motor shaft. Slide clip over end of shaft to secure fan in place.

NOTE: Two different clip styles are included in your kit: an e-clip and push-on style.

Use the e-clip if your motor shaft has a groove. Be sure the e-clip is properly installed on the shaft. Improperly installed e-clips can work themselves loose over time and may cause serious damage to your motor.

Use the push-on style clip if your motor shaft is smooth.

2. Install new retaining ring on motor shaft.
3. Reinstall enclosure(s) on sprayer, and install and tighten enclosure mounting screws.

Installation Notes



Take care to not pinch wiring harness (E) between pump (G) and any part of drive housing (F) or between front cover (B) and drive housing. Use a needle-nose pliers to remove harness.



For best cover (B) alignment, tighten lower two cover screws (A) first, then top two. Torque screws to 110-120 in.-lbs (12.4-13.6 N•m).



For yoke (C) installation, bearing (R) on gear (S) must touch top of pump rod. Turn gear to move bearing to proper height.



If yoke guide rods (D) drop out of position during assembly, damage will occur when cover (B) is tightened. Always check position of guide rods before tightening cover.

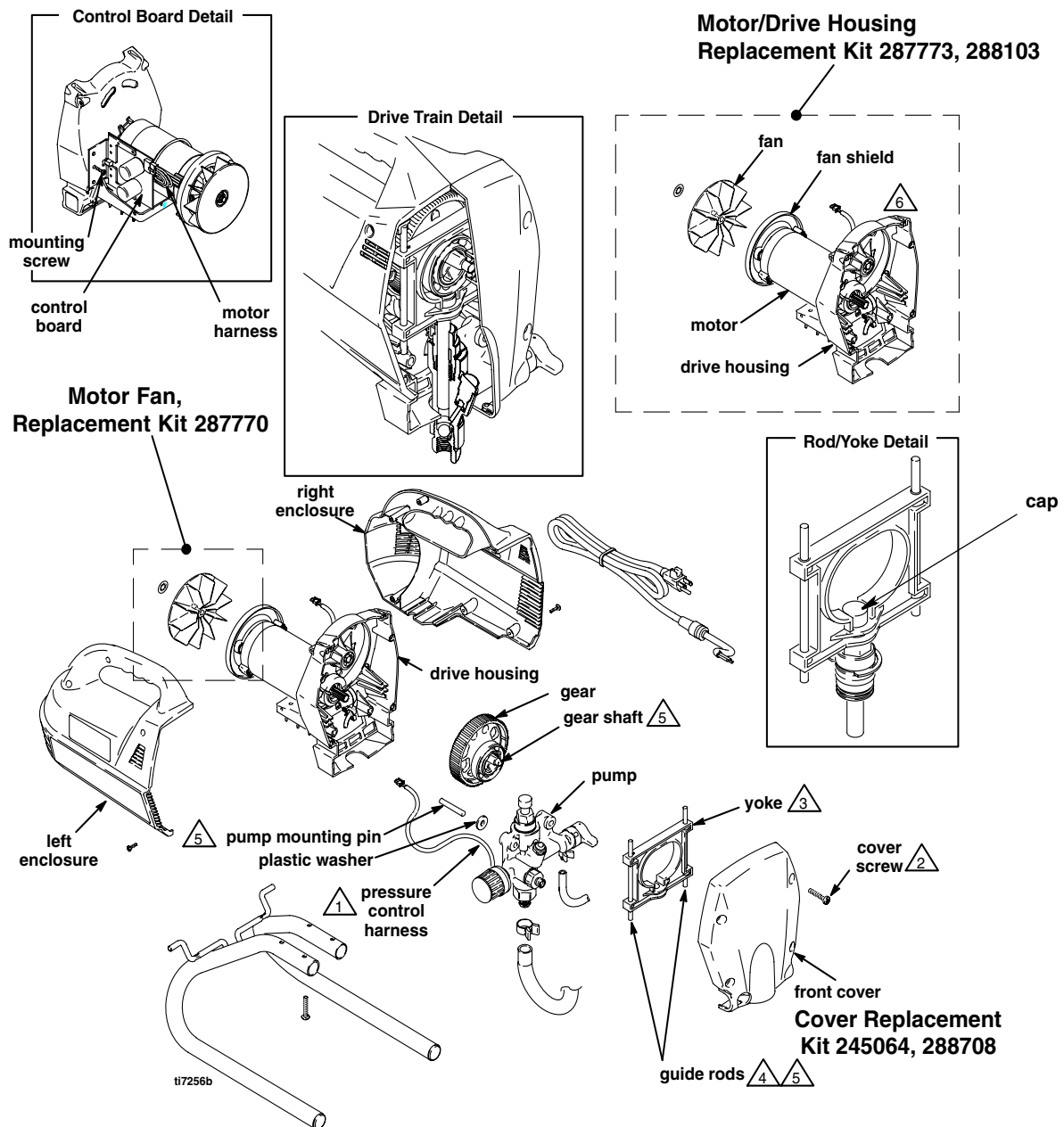


Apply light coat of oil.

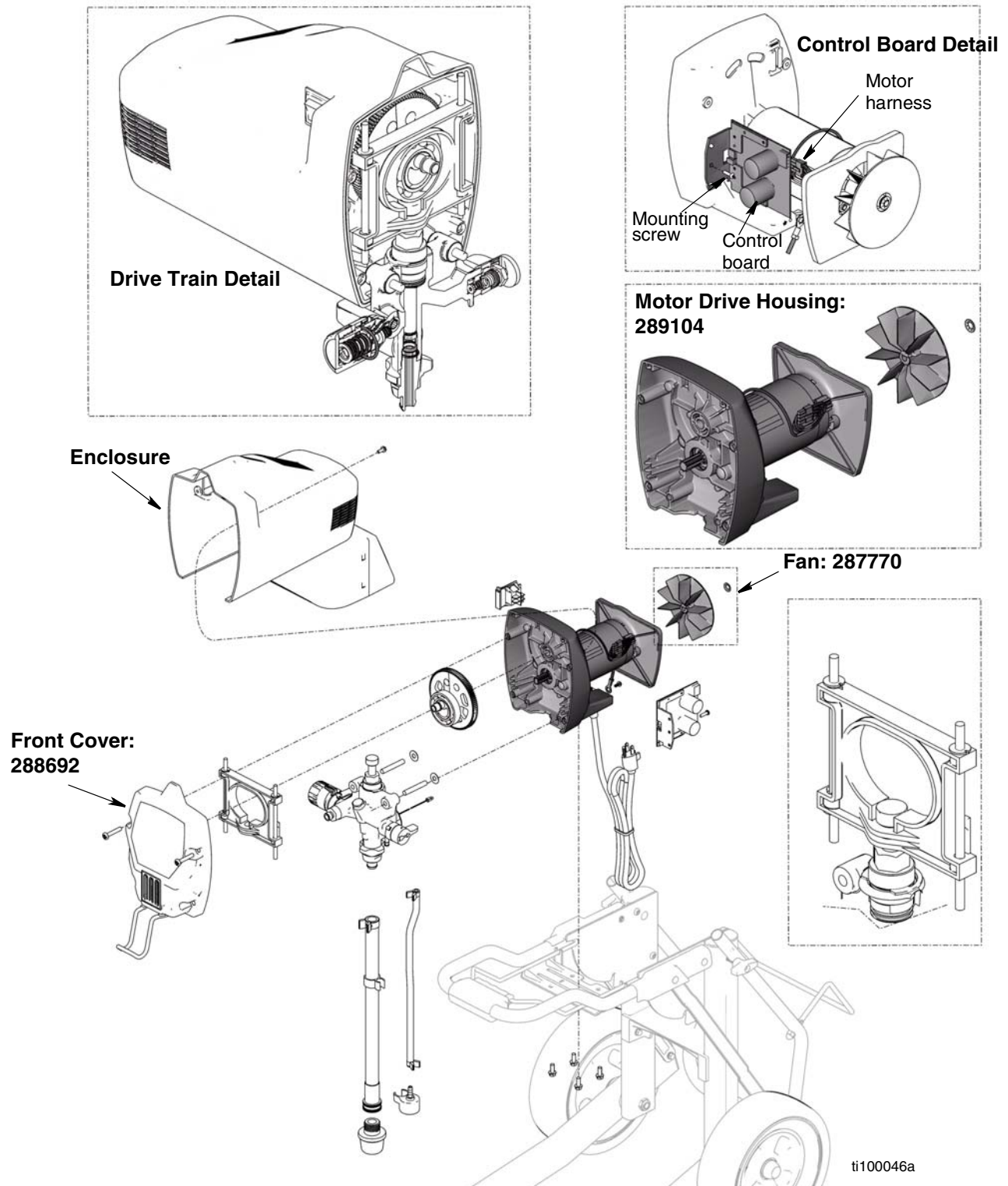


Apply one or two drops of thread locking adhesive (included in kit) to threads of pressure control switch (H). Torque to 140-160 in.-lbs (16-18 N•m).

XR/SR7 Model Sprayers

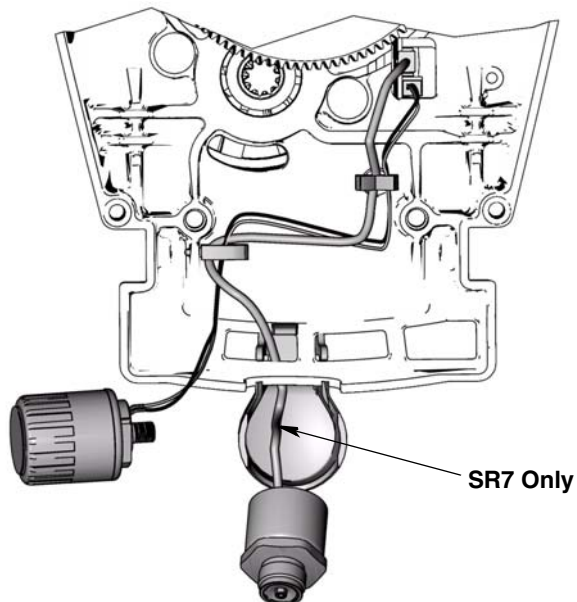


ProX Model Sprayers

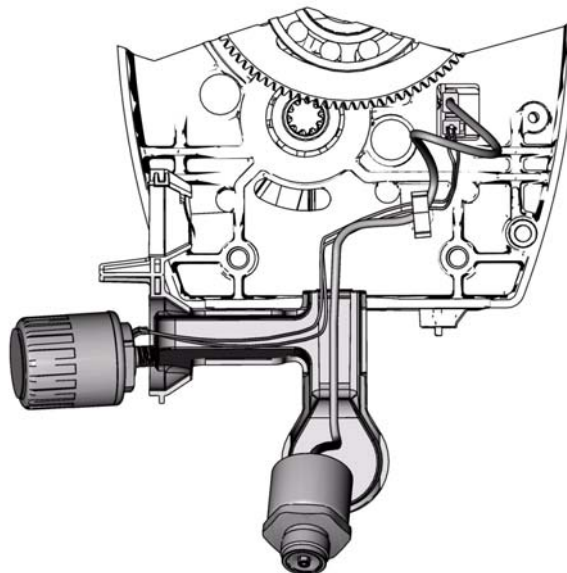


Wire Routing

XR/SR7



ProX



All written and visual data contained in this document reflects the latest product information available at the time of publication.
Graco reserves the right to make changes at any time without notice.

GRACO INC. P.O. BOX 1441 MINNEAPOLIS, MN 55440-1441

www.graco.com

5/2007