

31 1289 rev.A

**Read all warnings and instructions in this manual.
Save these instructions.**

This exploded view diagram illustrates the components of a water filter assembly. The parts are numbered as follows:

- 1**: A long, curved, grey plastic tube with a male connector at one end.
- 2**: A vertical grey plastic housing with a female connector at the top and a smaller cylindrical component at the bottom.
- 3**: A grey plastic housing with a female connector at the top and a complex, multi-ported bottom section.
- 4**: A small, dark grey O-ring seal.
- 5**: A small, dark grey O-ring seal.
- 6**: A grey plastic housing with a female connector at the top and a complex, multi-ported bottom section, similar to part 3 but with a different internal structure.
- 7**: A small, dark grey O-ring seal.

The diagram shows the assembly sequence: the tube (1) is inserted into the top of housing 2. Housing 2 is then inserted into housing 3, with O-ring 4 sealing the joint. Housing 3 is then inserted into housing 6, with O-ring 7 sealing the joint. The final assembly is shown with housing 6 and its associated O-ring 5.

ti7137a

* Use yellow gasket 111025 (included in kit) when spraying harsh materials

Copyright 2005, Graco Inc. is registered to I.S. EN ISO 9001

**WARNING****SKIN INJECTION HAZARD**

High-pressure fluid from gun, hose leaks, or ruptured components will pierce skin. This may look like just a cut, but it is a serious injury that can result in amputation. **Get immediate surgical treatment.**

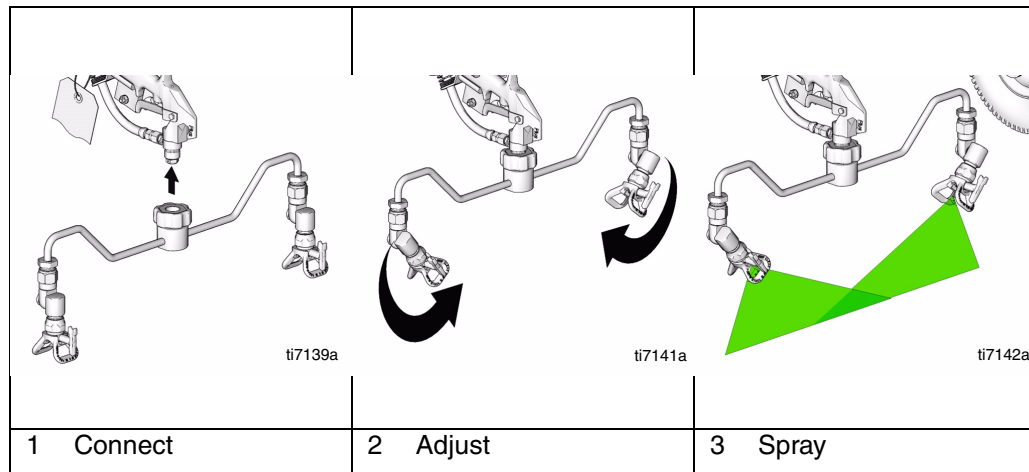
- Do not point gun at anyone or at any part of the body.
- Do not put your hand over the spray tip.
- Do not stop or deflect leaks with your hand, body, glove, or rag.
- Do not spray without tip guard and trigger guard installed.
- Engage trigger lock when not spraying.
- Follow **Pressure Relief Procedure** in this manual, when you stop spraying and before cleaning, checking, or servicing equipment.

Pressure Relief Procedure

- 1 Engage gun trigger safety.
- 2 Turn off power to pump.
- 3 Disengage gun trigger safety. Hold metal part of gun to side of grounded metal pail and trigger gun to relieve pressure.
- 4 Engage gun trigger safety.
- 5 Open pressure drain valve. Leave drain valve open until you are ready to spray again.

If you suspect that the spray tip or hose is completely clogged, or that pressure has not been fully relieved after following the steps above, VERY SLOWLY loosen the tip guard retaining nut or hose end coupling to relieve the pressure gradually, then loosen completely. Now clear the tip or hose.

Installation



Technical Data

Maximum working pressure	3600 psi
	(24,8 MPa, 248 bar)
Fluid inlet/outlet size	7/8-14 UNC
Wetted parts	Aluminum, Delrin [®] , PTFE, nylon, nickel-plated carbon steel, stainless steel
Delrin [®] is a trademark of the DuPont Co.	

TO PLACE AN ORDER, contact your Graco distributor, or call **1-800-690-2894** to identify the nearest distributor.

All written and visual data contained in this document reflects the latest product information available at the time of publication.
Graco reserves the right to make changes at any time without notice.

This manual contains English
mm 311289

Graco Headquarters: Minneapolis

International Offices: Belgium, Korea, China, Japan

GRACO INC. P.O. BOX 1441 MINNEAPOLIS, MN 55440-1441

<http://www.graco.com>

PRINTED IN U.S.A. 9/2005