

Gravity and Siphon Cups for GT Spray Guns

311241 rev.A



Important Safety Instructions

Read all warnings and instructions in this manual.
Save these instructions.

Models

249258 23 oz. Gravity Cup, Aluminum

249257 34 oz. Gravity Cup, Aluminum

249873 32 oz. Siphon Cup, Aluminum





Contents

Models	1
Warnings	2
Gravity Cup	4
Setup	4
Cleaning	4
Siphon Cup	5
Setup	5
Cleaning	5
Parts	6
Technical Data	7
Gravity Cups	7
Siphon Cup	7
Graco Standard Warranty	8
Graco Information	8

PROVEN QUALITY. LEADING TECHNOLOGY.

Warnings

The following general warnings are for the setup, use, grounding, maintenance, and repair of this equipment. Additional, more specific warnings may be found throughout the body of this manual where applicable. *Symbols appearing in the body of the manual refer to these general warnings. When these symbols appear throughout the manual, refer back to these pages for a description of the specific hazard.*

 WARNING	
	<p>FIRE AND EXPLOSION HAZARD</p> <p>Flammable fumes, such as solvent and paint fumes, in work area can ignite or explode. To help prevent fire and explosion:</p> <ul style="list-style-type: none"> • Use equipment only in well ventilated area. • Eliminate all ignition sources; such as pilot lights, cigarettes, portable electric lamps, and plastic drop cloths (potential static arc). • Keep work area free of debris, including solvent, rags and gasoline. • Do not plug or unplug power cords, or turn power or light switches on or off when flammable fumes are present. • Ground all equipment in the work area. See Grounding instructions in all equipment manuals. • Use only grounded hoses. • Hold gun firmly to side of grounded pail when triggering into pail. • If there is static sparking or you feel a shock, stop operation immediately. Do not use equipment until you identify and correct the problem. • Keep a fire extinguisher in the work area.
	<p>EQUIPMENT MISUSE HAZARD</p> <p>Misuse can cause death or serious injury.</p> <ul style="list-style-type: none"> • Do not operate the unit when fatigued or under the influence of drugs or alcohol. • Do not exceed the maximum working pressure or temperature rating of the lowest rated system component. See Technical Data in all equipment manuals. • Use fluids and solvents that are compatible with equipment wetted parts. See Technical Data in all equipment manuals. Read fluid and solvent manufacturer's warnings. For complete information about your material, request MSDS forms from distributor or retailer. • Check equipment daily. Repair or replace worn or damaged parts immediately with genuine Graco replacement parts only. • Do not alter or modify equipment. • Use equipment only for its intended purpose. Call your Graco distributor for information. • Route hoses and cables away from traffic areas, sharp edges, moving parts, and hot surfaces. • Do not kink or over bend hoses or use hoses to pull equipment. • Keep children and animals away from work area. • Comply with all applicable safety regulations.
	<p>PERSONAL PROTECTIVE EQUIPMENT</p> <p>You must wear appropriate protective equipment when operating, servicing, or when in the operating area of the equipment to help protect you from serious injury, including eye injury, inhalation of toxic fumes, burns, and hearing loss. This equipment includes but is not limited to:</p> <ul style="list-style-type: none"> • Protective eyewear • Clothing and respirator as recommended by the fluid and solvent manufacturer • Gloves • Hearing protection



A series of horizontal lines for writing, consisting of 28 lines in total. The lines are evenly spaced and extend across the width of the page.

Gravity Cup

Setup

1. If the fluid requires filtering, insert the fluid filter (4) into the cup outlet and install the washer (5) into the gun fluid fitting. See FIG. 1.
2. Screw the cup hand tight onto the gun. See FIG. 2.
3. Remove the cup lid (2) and fill the cup with fluid.
4. Tighten the lid (2) onto the cup (3).

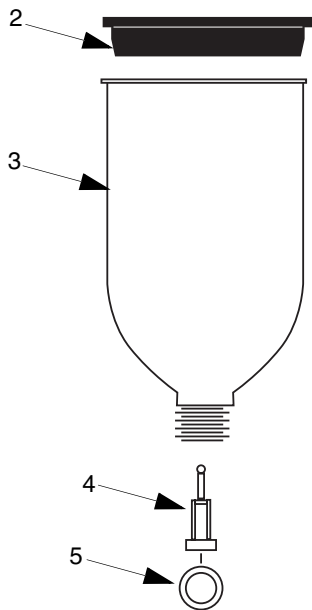


FIG. 1

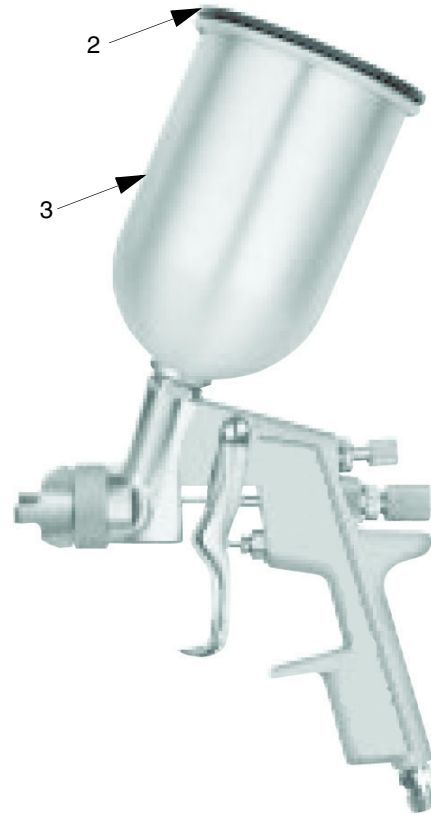


FIG. 2

Cleaning

1. Remove the cup lid (2) and pour the paint out of the cup (3).
2. Pour a small amount of clean solvent into the cup (3) and install the cup lid (2).
3. Shake the cup to clean the inside.
4. Spray solvent through the gun to clean the inside of the gun fluid section.
5. Repeat steps 2 through 4 until the cup and gun are clean.
6. Pour the solvent out of the cup (3) and wipe it dry.

Siphon Cup

Setup

1. Push clamp lever (A) fully to the unclamped position, against the yoke (B). See FIG. 3.
2. Twist cup lid (101) counterclockwise to disengage the yoke hook from the extended cup pins (C).
3. Remove the cup lid (101) and fill cup (103) with fluid.
4. Verify gasket (102) is installed on the bottom of the cup lid (101). Twist the cup lid (101) clockwise to engage the yoke hook (B), then push the clamp lever (A) fully to the clamped position. Use your thumb to force the clamp lever into position; do not use wrenches or tools to move it.
5. Securely connect the cup assembly onto the gun fluid inlet, using a wrench on the swivel nut (D).

Cleaning

1. Push the clamp lever (A) fully to the unclamped position, against the yoke (B). See FIG. 3.
2. Twist the cup lid (101) counterclockwise to disengage the yoke hook from the cup extended pins (C).
3. Remove the cup lid (101).
4. Clean the cup lid (101) and cup (103) with solvent.

CAUTION

When cleaning the cup lid (101), avoid prolonged exposure of the gasket (102) to solvent as this will cause it to swell.

5. Spray clean solvent through the gun until all fluid passages are clean.

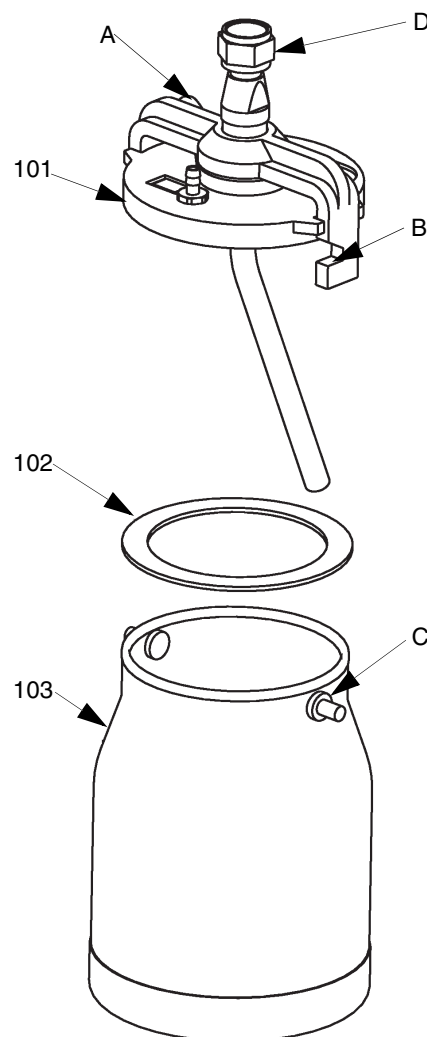


FIG. 3

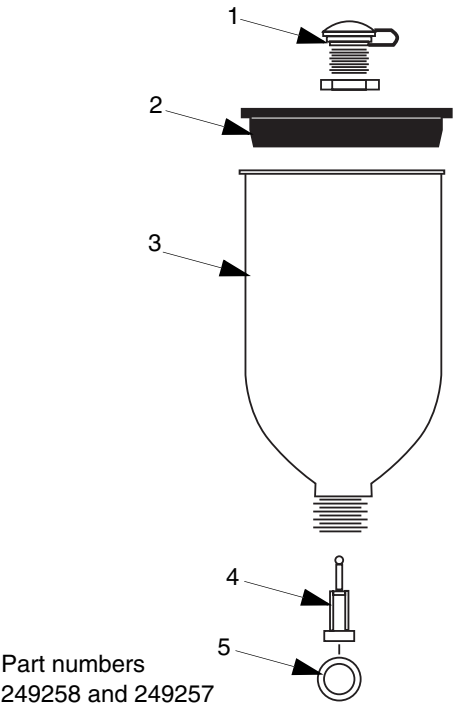
Parts

23 oz. Aluminum Gravity Cup Part No. 249258

Ref.			
No.	Description		Qty.
1	CAP		1
2	LID, cup		1
3	CUP, 23 oz. (650 cc)		1
4	FILTER, fluid		1
5	WASHER, nylon		1

34 oz. Aluminum Gravity Cup Part No. 249257

Ref.			
No.	Description		Qty.
1	CAP		1
2	LID, cup		1
3	CUP, 34 oz. (1000 cc)		1
4	FILTER, fluid		1
5	WASHER, nylon		1

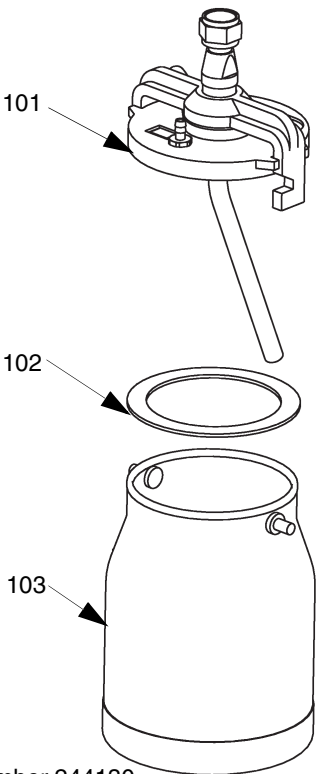


Part numbers
249258 and 249257

One Quart Aluminum Siphon Cup Part No. 249873

Ref.			
No.	Part No.	Description	Qty.
101		LID, cup	1
102		GASKET	1
103	243841	CUP, 32 oz. (950 cc)	1

See Graco manual 308792 for stainless steel siphon cup (Part No. 239582).



Part number 244130

Technical Data

Gravity Cups

Category	Data
Material	
<i>Cup</i>	Aluminum
<i>Fluid Fitting</i>	Nickel plated carbon steel
Fluid Inlet Thread	3/8-18 npsm
Weight	
<i>249258 Aluminum 23 oz. (650 cc)</i>	0.4 lb (181 g)
<i>249257 Aluminum 34 oz. (1000 cc)</i>	0.5 lb (226 g)

Siphon Cup

Category	Data
Material 249873	
<i>Cup and lid</i>	Aluminum
<i>Gasket</i>	Polyethylene foam
Fluid Inlet Thread	3/8-18 npsm
Weight	
<i>249873 Aluminum 32oz. (950 cc).</i>	1.0 lb (454 g)

Related Manuals

This manual is available in the following languages:

English	311241
French	311242
German	311243
Italian	311244
Spanish	311245
Finnish	311246
Danish	311247
Norwegian	311248
Swedish	311249
Dutch	311250
Japanese	311251
Korean	311252
Chinese	311253

Graco Standard Warranty

Graco warrants all equipment referenced in this document which is manufactured by Graco and bearing its name to be free from defects in material and workmanship on the date of sale to the original purchaser for use. With the exception of any special, extended, or limited warranty published by Graco, Graco will, for a period of twelve months from the date of sale, repair or replace any part of the equipment determined by Graco to be defective. This warranty applies only when the equipment is installed, operated and maintained in accordance with Graco's written recommendations.

This warranty does not cover, and Graco shall not be liable for general wear and tear, or any malfunction, damage or wear caused by faulty installation, misapplication, abrasion, corrosion, inadequate or improper maintenance, negligence, accident, tampering, or substitution of non-Graco component parts. Nor shall Graco be liable for malfunction, damage or wear caused by the incompatibility of Graco equipment with structures, accessories, equipment or materials not supplied by Graco, or the improper design, manufacture, installation, operation or maintenance of structures, accessories, equipment or materials not supplied by Graco.

This warranty is conditioned upon the prepaid return of the equipment claimed to be defective to an authorized Graco distributor for verification of the claimed defect. If the claimed defect is verified, Graco will repair or replace free of charge any defective parts. The equipment will be returned to the original purchaser transportation prepaid. If inspection of the equipment does not disclose any defect in material or workmanship, repairs will be made at a reasonable charge, which charges may include the costs of parts, labor, and transportation.

THIS WARRANTY IS EXCLUSIVE, AND IS IN LIEU OF ANY OTHER WARRANTIES, EXPRESS OR IMPLIED, INCLUDING BUT NOT LIMITED TO WARRANTY OF MERCHANTABILITY OR WARRANTY OF FITNESS FOR A PARTICULAR PURPOSE.

Graco's sole obligation and buyer's sole remedy for any breach of warranty shall be as set forth above. The buyer agrees that no other remedy (including, but not limited to, incidental or consequential damages for lost profits, lost sales, injury to person or property, or any other incidental or consequential loss) shall be available. Any action for breach of warranty must be brought within two (2) years of the date of sale.

GRACO MAKES NO WARRANTY, AND DISCLAIMS ALL IMPLIED WARRANTIES OF MERCHANTABILITY AND FITNESS FOR A PARTICULAR PURPOSE, IN CONNECTION WITH ACCESSORIES, EQUIPMENT, MATERIALS OR COMPONENTS SOLD BUT NOT MANUFACTURED BY GRACO. These items sold, but not manufactured by Graco (such as electric motors, switches, hose, etc.), are subject to the warranty, if any, of their manufacturer. Graco will provide purchaser with reasonable assistance in making any claim for breach of these warranties.

In no event will Graco be liable for indirect, incidental, special or consequential damages resulting from Graco supplying equipment hereunder, or the furnishing, performance, or use of any products or other goods sold hereto, whether due to a breach of contract, breach of warranty, the negligence of Graco, or otherwise.

FOR GRACO CANADA CUSTOMERS

The Parties acknowledge that they have required that the present document, as well as all documents, notices and legal proceedings entered into, given or instituted pursuant hereto or relating directly or indirectly hereto, be drawn up in English. Les parties reconnaissent avoir convenu que la rédaction du présente document sera en Anglais, ainsi que tous documents, avis et procédures judiciaires exécutés, donnés ou intentés, à la suite de ou en rapport, directement ou indirectement, avec les procédures concernées.

Graco Information

TO PLACE AN ORDER, contact your Graco distributor or call to identify the nearest distributor.

Phone: 612-623-6921 or **Toll Free:** 1-800-328-0211, **Fax:** 612-378-3505

*All written and visual data contained in this document reflects the latest product information available at the time of publication.
Graco reserves the right to make changes at any time without notice.*

MM 311241

Graco Headquarters: Minneapolis
International Offices: Belgium, China, Japan, Korea

GRACO INC. P.O. BOX 1441 MINNEAPOLIS, MN 55440-1441

www.graco.com

Printed in USA 311241A

8/2005