

Pressure Control Assembly Replacement

311022 rev.B

Models: 249005, 248929, and 289106**WARNING****ELECTRIC SHOCK HAZARD**

Improper grounding, setup, or usage of the system can cause electric shock.

- Turn off and disconnect power cord before servicing equipment.
- Use only grounded electrical outlets.
- Use only 3-wire extension cords.
- Ensure ground prongs are intact on sprayer and extension cords.

Pressure Relief Procedure**WARNING**

Follow this **Pressure Relief Procedure** whenever you are instructed to relieve pressure, stop spraying, check or service equipment or install or clean spray tip. Read **Injection Hazard Warning**.

1. Turn OFF power and turn pressure control to lowest pressure setting.
2. Hold gun against side of grounded metal flushing pail. Trigger gun to relieve pressure.
3. Turn prime valve down.

If you suspect the spray tip or hose is clogged or that pressure has not been fully relieved after following the steps above, VERY SLOWLY loosen tip guard retaining nut or hose end coupling to relieve pressure gradually, then loosen completely. Clear hose or tip obstruction.

4. Engage trigger safety lock on gun if unit is being shut down or left unattended.

**Important Safety Instructions**

Read all warnings and instructions in this manual and in manual 310824. Save these instructions.

PROVEN QUALITY. LEADING TECHNOLOGY.

Pressure Control Assembly Replacement

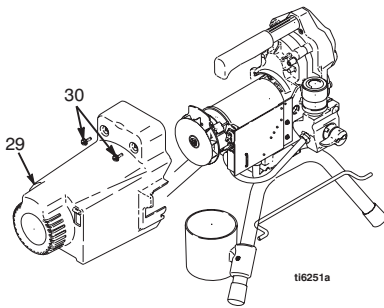
See *Wiring Diagram*, page 3.

WARNING

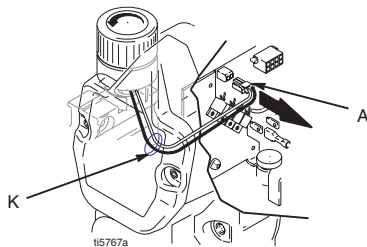
Read **Electric Shock Warning**, page 1 and **Pressure Relief Procedure**, page 1.

Removal

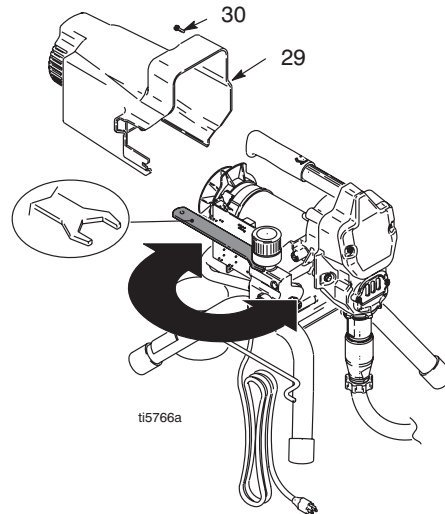
1. **Relieve pressure**, page 1. Disconnect power cord from outlet.
2. Remove two screws (30) and shroud (29).



3. Disconnect pressure switch connector (A) from control board (33).




4. Remove tape (22) holding wires to manifold.
5. Pull wires back through hole (K) in housing.
6. Turn the pressure control knob (16) counter clock-wise as far as you can to access the flats on either side of the pressure control assembly.
7. Using a 1 in. (26 mm) wrench loosen and unscrew pressure control assembly.

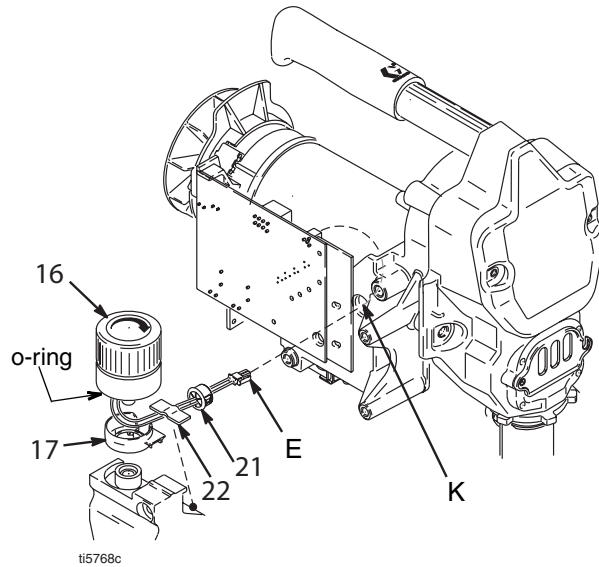



If you plan to reuse the pressure control assembly, be very careful not to damage or tangle the wires while unscrewing the assembly.

8. Remove pressure control assembly.

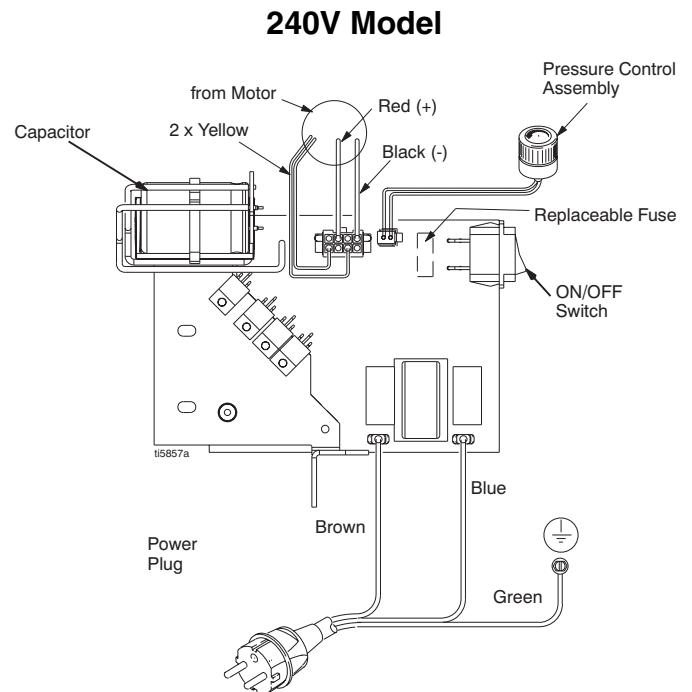
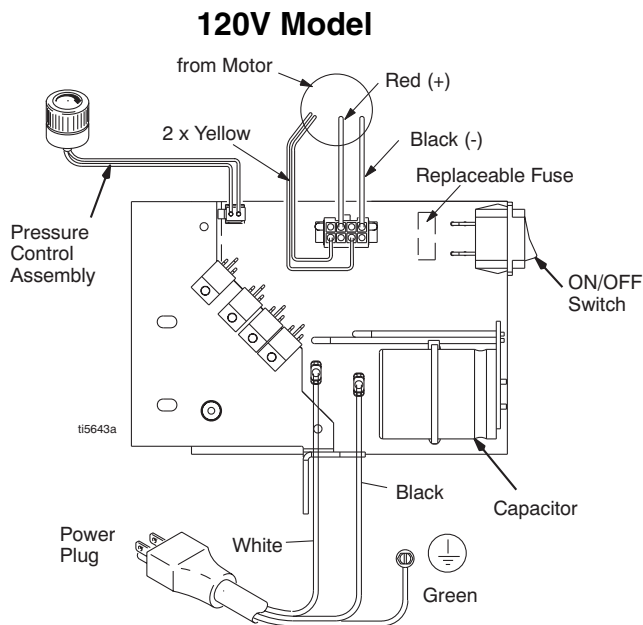
Installation

 Inspect pressure control assembly before installation to verify the o-ring is installed and in place.



1. Align grommet collar (17) on fluid manifold so opening faces toward motor.
2. Apply loctite to pressure control assembly threads (16)
3. Screw pressure control assembly (16) into manifold and torque to 150 in-lbs (17.0 N.m)
-  Be careful when tightening pressure control knob that wires do not get pinched between the pressure control assembly and fluid manifold.
4. Tuck wires into collar (17) while routing wires toward collar opening. Feed wires through hole in housing (K).
5. Insert grommet (21) in hole (K). Secure wires to manifold housing with tape (22).
6. Reconnect pressure switch connector (A) to control board (33).
7. Install shroud (29) and two screws (30).

Wiring Diagram



*All written and visual data contained in this document reflects the latest product information available at the time of publication.
Graco reserves the right to make changes at any time without notice.*

Graco Headquarters: Minneapolis

International Offices: Belgium, China, Japan, Korea

GRACO INC. P.O. BOX 1441 MINNEAPOLIS, MN 55440-1441

www.graco.com

This manual contains English. 311022

4/2007