

Instructions



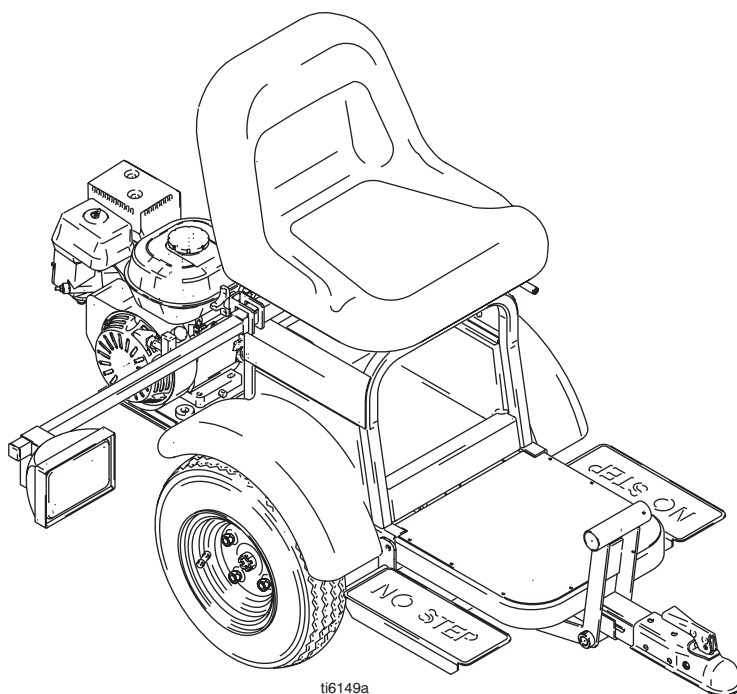
Line Driver™ Throttle Linkage Kit 287585

310999 Rev.A

Instructions on page 3.



Read all warnings and instructions in 309402

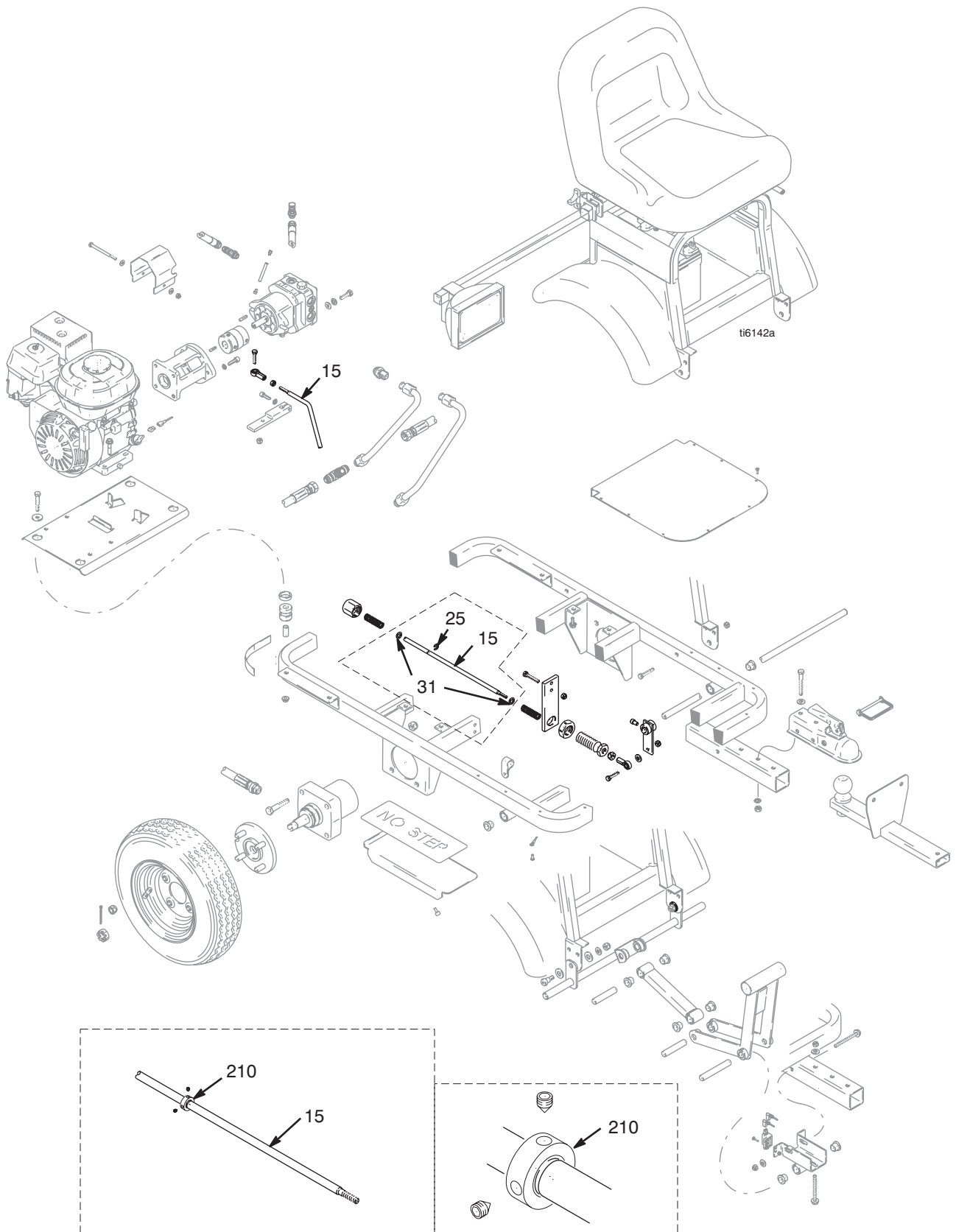


ti6149a

PROVEN QUALITY. LEADING TECHNOLOGY.



Parts



Instructions

- 1 Remove two washers (31) and snap ring (25) from linkage rod (15).
- 2 See details at bottom of page 2. Install stop collar (210) at groove where snap ring was removed.
- 3 Place some Locktite (supplied) in set screw holes of collar.
- 4 Tighten set screws.

TO PLACE AN ORDER, contact your Graco distributor, or call **1-800-690-2894** to identify the nearest distributor.
All written and visual data contained in this document reflects the latest product information available at the time of publication.
Graco reserves the right to make changes at any time without notice.

Sales Offices: Minneapolis

International Offices: Belgium, Korea, Hong Kong, Japan

GRACO INC. P.O. BOX 1441 MINNEAPOLIS, MN 55440-1441

<http://www.graco.com>

PRINTED IN U.S.A. 310999, Rev. A 11/2004