

GH™ 200, EH™ 200, EH™ 200 HDI Electric Motor Kit

310812 rev.H

- Use with Architectural Coatings and Paints -

3300 psi (22.8 MPa, 228 bar) Maximum Working Pressure

288473: 120 Vac, 60 Hz, 15A

GH130 Sprayer Electric Motor Kit

288474: 120 Vac, 60 Hz, 20A

Same as 288473 except with ETL approval to CSA and UL standards

248949: 120 Vac, 60 Hz, 15A

GH200/GH230 Sprayer Electric Motor Kit

248950: 120 Vac, 60 Hz, 20A

Same as 248949 except with ETL approval to CSA and UL standards

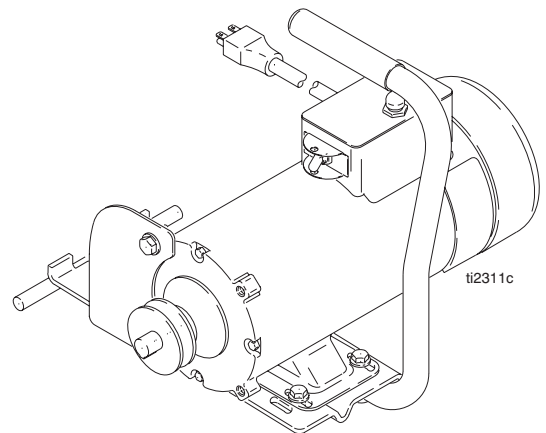
248946: 220 Vac, 50 Hz, 13.4A

EH200/EH200HDI Sprayer Electric Motor Kit



IMPORTANT SAFETY INSTRUCTIONS.




Read all warnings and instructions in this manual. Save these instructions.



PROVEN QUALITY. LEADING TECHNOLOGY.

Warnings

The following are general warnings related to the setup, use, grounding, maintenance and repair of this equipment. The exclamation point symbol alerts you to a general warning and the hazard symbols refer to procedure-specific risks. Refer back to these Warnings. Additional, product-specific warnings may be found throughout the body of this manual where applicable.

 WARNING	
	<p>FIRE AND EXPLOSION HAZARD</p> <p>Flammable fumes, such as solvent and paint fumes, in work area can ignite or explode. To help prevent fire and explosion:</p> <ul style="list-style-type: none"> • Use equipment only in well ventilated area. • Eliminate all ignition sources; such as pilot lights, cigarettes, portable electric lamps, and plastic drop cloths (potential static arc). • Sprayer generates sparks. When flammable liquid is used in or near the sprayer or for flushing or cleaning, keep sprayer at least 20 feet (6 m) away from explosive vapors. • Keep work area free of debris, including solvent, rags and gasoline. • Do not plug or unplug power cords or turn lights on or off when flammable fumes are present. • Ground equipment and conductive objects in work area. Read Grounding instructions. • If there is static sparking or you feel a shock, stop operation immediately. Do not use equipment until you identify and correct the problem. • Keep a working fire extinguisher in the work area.
	<p>ELECTRIC SHOCK HAZARD</p> <p>Improper grounding, setup, or usage of the system can cause electric shock.</p> <ul style="list-style-type: none"> • Turn off and disconnect power cord before servicing equipment. • Use only grounded electrical outlets. • Use only 3-wire extension cords. • Ensure ground prongs are intact on sprayer and extension cords. • Do not expose to rain. Store indoors.

Grounding



Improper installation or alteration of the grounding plug will result in a risk of electric shock, fire or explosion that could cause serious injury or death.

The sprayer must be grounded. Grounding reduces the risk of static and electric shock by providing an escape wire for the electrical current due to static build up or in the event of a short circuit.

- Fig. 1. 120 Vac: requires a 120 Vac, 60 Hz, 20A (15A for 248949) circuit with a grounding receptacle (A). 230 Vac: requires a 230 Vac, 50 Hz, 13A circuit with a grounding receptacle (A). Never use an outlet that is not grounded (A) or an adapter.

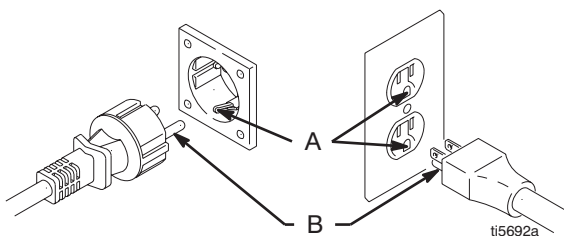


FIG. 1

- Do not use sprayer if electric cord has a damaged ground prong (B). Only use an extension cord with an undamaged 3-prong plug.

Recommended extension cord lengths:

- 25 ft (7.6 m) 18 AWG
 - 50 ft (15.2 m) 16 AWG
 - 100 ft (30.5 m) 14 AWG
 - 150 ft (45.7 m) 12 AWG
- Smaller gauge or longer cords may reduce sprayer performance.

- If the power cord or plug is damaged, replace with the appropriate cord listed in the **Parts List**.

Pulley Placement

Sprayer Models:

248559, 248560, 248561, 248565, 248566, 248568, 253709, 253957, 253959, 253980, 253960, 253962, 253963, 253981, 253964, 253965, 253966, 253982

Models:

233940, 233941, 233942, 233943, 248946

Fig. 2. Align pulley (4) approximately 0.20 in. from end of electric motor shaft.

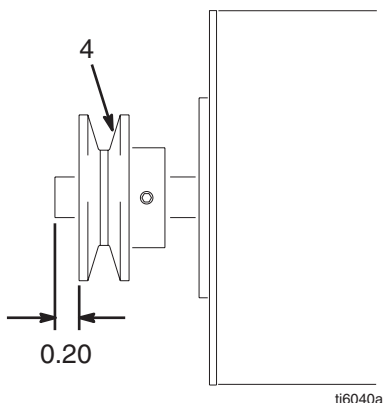


FIG. 2

Fig. 3. Align pulley (4) at end of electric motor shaft.

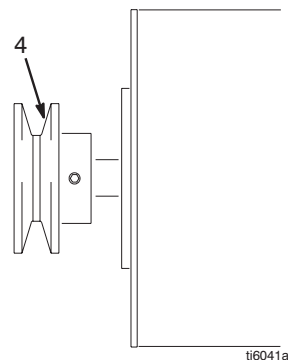
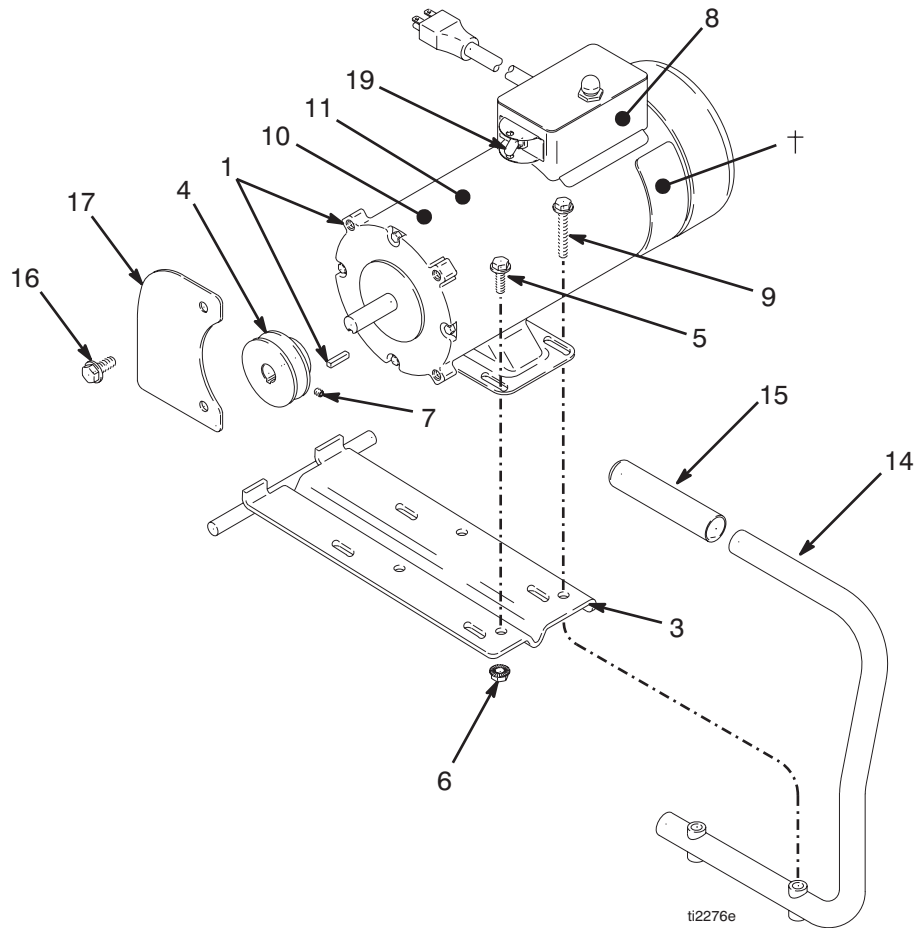
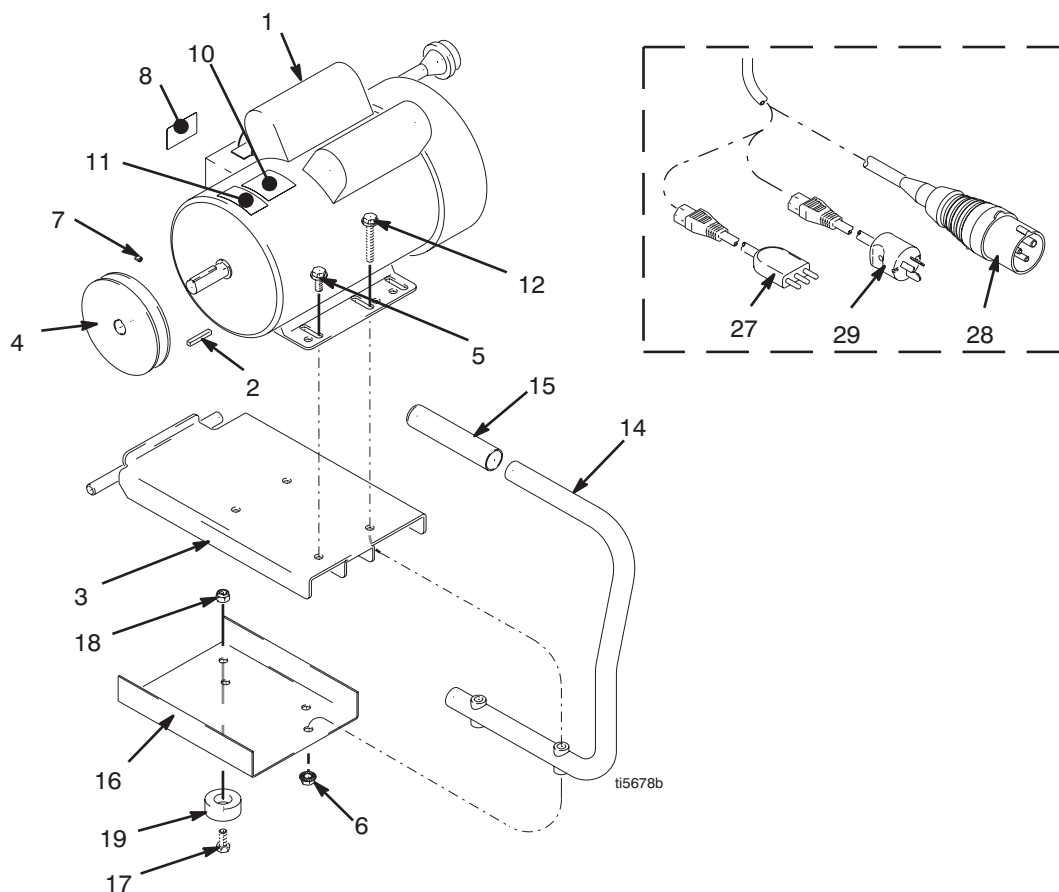


FIG. 3

288473, 288474, 248949, 248950 Parts

Ref	Part	Description	Qty	Ref	Part	Description	Qty
1†		ELECTRIC MOTOR		14	246214	HANDLE, conversion	1
	246129	NON-CSA, 2.0 HP, includes 19	1	15	111700	GRIP, handle	1
	246125	CSA, 2.0 HP, includes 19	1	16	111192	SCREW, cap, flange hd	2
3	198838	BRACKET, mount, engine	1	17	15B562	BRACKET, guard, motor	1
4	15A752	PULLEY, 2.5 in - Models 248949, 248950	1	18	176347	LABEL, identification	1
	15J953	PULLEY, 4.25 in - Models 288473 and 288474	1	19	287145	SWITCH, breaker	1
5	112586	SCREW, cap, hex hd	2	▲ Warning labels, tags, and cards are free.			
6	110996	NUT, flanged, hex	4	† Brush Repair Kit 220853 is available for 248949, 288473			
7	100002	SCREW, set	2	Brush Repair Kit 287737 is available for 248950, 288474			
8▲		LABEL, warning					
	187975	NON-CSA	1				
	193096	CSA	1				
9	114653	SCREW, cap, hex hd	2				
10▲	189285	LABEL, danger, (English)	1				
	195805	LABEL, danger, (French)	1				

248946 Parts



Ref	Part	Description	Qty
1	15E669	ELECTRIC MOTOR 3.0 HP, 220 Vac	1
2	117632	KEY, square, 3/16 x 1.25 in	1
3	15E585	BRACKET, mount, engine	1
4	15E588	PULLEY, 2.5 in	1
5	110963	SCREW, cap, hex hd	2
6	110996	NUT, flanged, hex	4
7	100002	SCREW, set	2
8▲	187975	LABEL, warning	1
10	15B804	LABEL, Graco, logo	1
11	290228	LABEL, caution	1
12	114653	SCREW, cap, hex hd	1
14	246214	HANDLE, conversion	1
15	111700	GRIP, handle	1
16	15F217	PLATE	1
17	100057	SCREW	4
18	111040	NUT	4
19	113817	BUMPER	4
27	197186	PLUG, Italian, rewirable	1
28	197187	PLUG, IEC 309, 16/20A, 3-pin	1
29	197188	PLUG, Australian, rewirable	1

▲ Warning labels, tags, and cards are free.
 Breaker Switch Repair Kit 287744 is available
 Capacitors Repair Kit 287746 is available

Warranty

Graco warrants all equipment referenced in this document which is manufactured by Graco and bearing its name to be free from defects in material and workmanship on the date of sale to the original purchaser for use. With the exception of any special, extended, or limited warranty published by Graco, Graco will, for a period of twelve months from the date of sale, repair or replace any part of the equipment determined by Graco to be defective. This warranty applies only when the equipment is installed, operated and maintained in accordance with Graco's written recommendations.

This warranty does not cover, and Graco shall not be liable for general wear and tear, or any malfunction, damage or wear caused by faulty installation, misapplication, abrasion, corrosion, inadequate or improper maintenance, negligence, accident, tampering, or substitution of non-Graco component parts. Nor shall Graco be liable for malfunction, damage or wear caused by the incompatibility of Graco equipment with structures, accessories, equipment or materials not supplied by Graco, or the improper design, manufacture, installation, operation or maintenance of structures, accessories, equipment or materials not supplied by Graco.

This warranty is conditioned upon the prepaid return of the equipment claimed to be defective to an authorized Graco distributor for verification of the claimed defect. If the claimed defect is verified, Graco will repair or replace free of charge any defective parts. The equipment will be returned to the original purchaser transportation prepaid. If inspection of the equipment does not disclose any defect in material or workmanship, repairs will be made at a reasonable charge, which charges may include the costs of parts, labor, and transportation.

THIS WARRANTY IS EXCLUSIVE, AND IS IN LIEU OF ANY OTHER WARRANTIES, EXPRESS OR IMPLIED, INCLUDING BUT NOT LIMITED TO WARRANTY OF MERCHANTABILITY OR WARRANTY OF FITNESS FOR A PARTICULAR PURPOSE.

Graco's sole obligation and buyer's sole remedy for any breach of warranty shall be as set forth above. The buyer agrees that no other remedy (including, but not limited to, incidental or consequential damages for lost profits, lost sales, injury to person or property, or any other incidental or consequential loss) shall be available. Any action for breach of warranty must be brought within two (2) years of the date of sale.

GRACO MAKES NO WARRANTY, AND DISCLAIMS ALL IMPLIED WARRANTIES OF MERCHANTABILITY AND FITNESS FOR A PARTICULAR PURPOSE, IN CONNECTION WITH ACCESSORIES, EQUIPMENT, MATERIALS OR COMPONENTS SOLD BUT NOT MANUFACTURED BY GRACO. These items sold, but not manufactured by Graco (such as electric motors, switches, hose, etc.), are subject to the warranty, if any, of their manufacturer. Graco will provide purchaser with reasonable assistance in making any claim for breach of these warranties.

In no event will Graco be liable for indirect, incidental, special or consequential damages resulting from Graco supplying equipment hereunder, or the furnishing, performance, or use of any products or other goods sold hereto, whether due to a breach of contract, breach of warranty, the negligence of Graco, or otherwise.

POUR LES CLIENTS DE GRACO PARLANT FRANCAIS

Les parties reconnaissent avoir convenu que la rédaction du présent document ainsi que de tous les documents, avis et procédures judiciaires exécutés, donnés ou intentés à la suite de ou en rapport, directement ou indirectement, avec les procédures concernées, sera en anglais.

FÜR GRACO-KUNDEN IN DEUTSCHLAND/ÖSTERREICH/SCHWEIZ

Die Parteien bestätigen hiermit die festgelegte Vereinbarung, daß das vorliegende Dokument sowie alle anderen Dokumente, Mitteilungen und Gerichtsverfahren, die im Zusammenhang damit erstellt, verteilt oder eingeleitet werden, oder sich direkt oder indirekt darauf beziehen, in englischer Sprache verfaßt sein sollen.

PARA LOS CLIENTES DE GRACO QUE HABLAN ESPAÑOL

Las partes reconocen haber convenido que el presente documento, así como todos los documentos, notificaciones y procedimientos judiciales emprendidos, presentados o establecidos que tengan que ver con estas garantías directa o indirectamente, estarán redactados en inglés.

PER I CLIENTI GRACO ITALIANI

Le controparti riconoscono di aver richiesto che il presente documento, e tutti gli altri documenti, avvisi e informazioni di natura legale sottoscritti, conferiti o istituiti direttamente o indirettamente, siano redatti in lingua inglese.

ADDITIONAL WARRANTY COVERAGE

Graco does provide extended warranty and wear warranty for products described in the "Graco Contractor Equipment Warranty Program".

TO PLACE AN ORDER, contact your Graco distributor, or call **1-800-690-2894** to identify the nearest distributor.

All written and visual data contained in this document reflects the latest product information available at the time of publication. Graco reserves the right to make changes at any time without notice.

This manual contains English.

mm 310812

Graco Headquarters: Minneapolis
International Offices: Belgium, Korea, China, Japan

GRACO INC. P.O. BOX 1441 MINNEAPOLIS, MN 55440-1441

<http://www.graco.com>

8/2004, Revised 4/2007