

Instructions – Parts List



HydraMax™ Sensor Kit 310714 rev.E

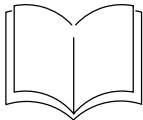
Model 248598, Series A for HydraMax 225

Model 248599, Series A for HydraMax 300 and 350



Important Safety Instructions

Read all warnings and instructions in this manual.
Save these instructions.



Related manuals



..... 309378

PROVEN QUALITY. LEADING TECHNOLOGY.

GRACO INC. P.O. BOX 1441 MINNEAPOLIS, MN 55440-1441
Copyright 2004, Graco Inc. is registered to I.S. EN ISO 9001



Installation

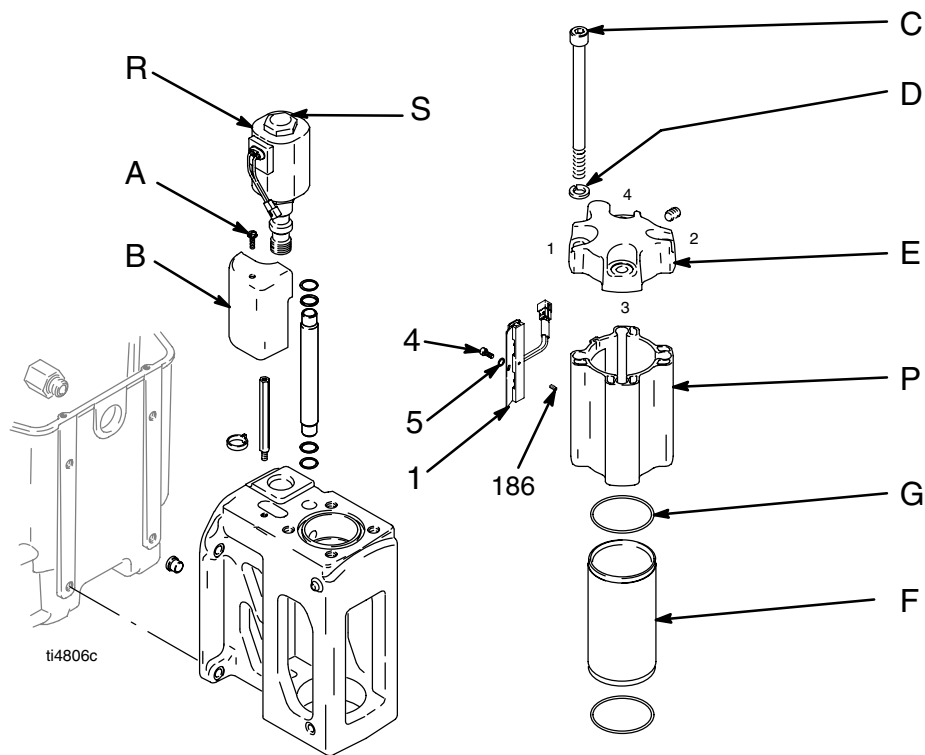


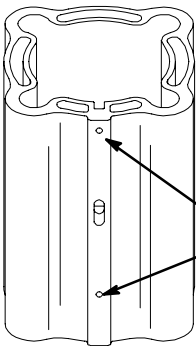
Fig. 1

Cylinder Sleeve

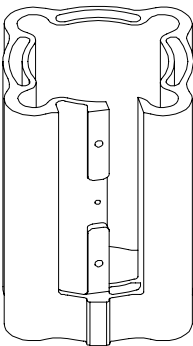
HydraMax 225 (Model 248598)

P1

P2



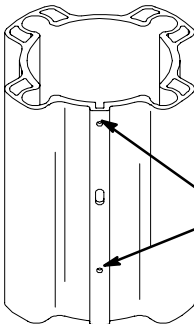
Loosen screws
before removal



HydraMax 300/350 (Model 248599)

P3

P4



Loosen screws
before removal

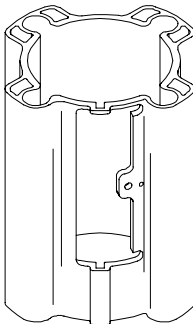


Fig. 2

All Models

(unless otherwise indicated, refer to Fig. 1)

1. Remove screw (A) and solenoid cover (B) to reveal cylinder sleeve (P).
2. Determine which cylinder sleeve (P) (P1, P2, P3 or P4 in Fig. 2) is installed on your sprayer.

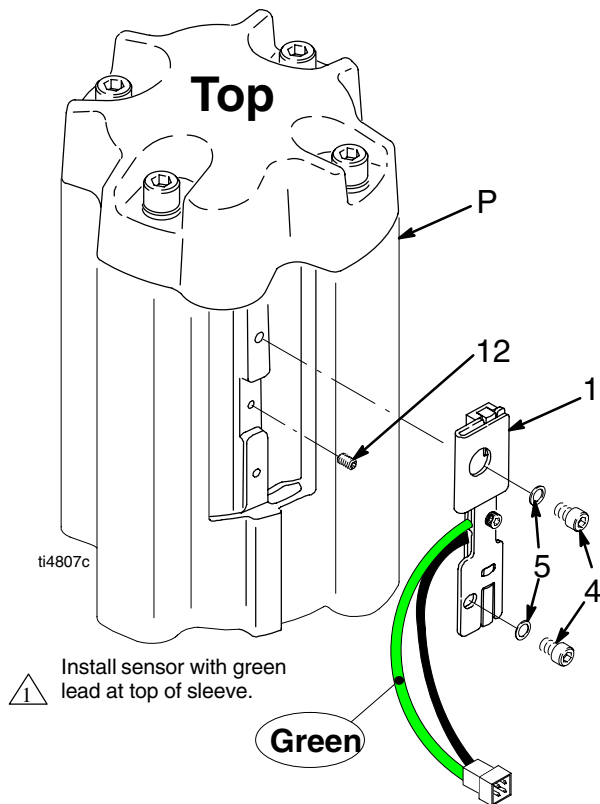


Fig. 3

For Cylinder Sleeve P1 / P3 (Fig. 2) –

3. Remove 4 screws (C), lock washers (D) and head (E) (Fig. 1).
4. Carefully remove and discard cylinder sleeve (P) (Fig. 1).

NOTE:

- Make sure cylinder (F) is still in place and is not removed with cylinder sleeve (P) (Fig. 1).
- It may be necessary to use a small, flat, screwdriver to loosen sensor screws, located inside cylinder sleeve (P) before removing cylinder sleeve (Fig. 2).

5. Install new cylinder sleeve (P) over cylinder (F) (Fig. 1).
6. Apply Locktite® to set screw (12) threads. Tighten set screw to 3–5 in-lbs (Fig. 3).
7. Replace gasket (G) and install cylinder cap (E), lock washers (D) and screws (C). Torque to 55 +/- 5 ft lbs in an alternating sequence: 1, 2, 3, 4 (Fig. 1).
8. Install sensor bracket assembly (1) to cylinder sleeve (P) using screws (4) and lock washers (5) (Fig. 3).

NOTE: HydraMax 225 (Model 248598) uses two screws (4) and washers (5). HydraMax 300/350 (Model 248599) uses one screw (4) and washer (5) (Fig. 3).

9. Install solenoid cover (B) and screw (A) (Fig. 1).

For Cylinder Sleeve P2 / P4 (Fig. 2) –

3. Remove 4 screws (C), lock washers (D) and head (E) (Fig. 1).

NOTE: For easier access to screw (4), solenoid valve (R) can be removed by removing nut (S) on top of valve. After nut is removed, slip solenoid off valve post and set aside. To reinstall solenoid, place it over valve post and tighten nut (S) to 9–11 ft-lbs (Fig. 1).

4. Remove sensor bracket assembly (1) from cylinder sleeve (P) by removing screws (4) and lock washers (5) (Fig. 3).
5. Install sensor bracket assembly (1) to cylinder sleeve (P) using screws (4) and lock washers (5) (Fig. 3).

NOTE: HydraMax 225 (Model 248598) uses two screws (4) and washers (5). HydraMax 300/350 (Model 248599) uses one screw (4) and washer (5) (Fig. 3).

6. Install solenoid cover (B) and screw (A) (Fig. 1).

*All written and visual data contained in this document reflects the latest product information available at the time of publication.
Graco reserves the right to make changes at any time without notice.*

MM 310714

Graco Headquarters: Minneapolis

International Offices: Belgium, China, Japan, Korea

GRACO INC. P.O. BOX 1441 MINNEAPOLIS, MN 55440-1441

www.graco.com

PRINTED IN USA 310714
3/2004 Rev. 7/2005