

Mounting Kits

310674 Rev.B

For ProMix™ Easy Plural Component Proportioners

Part No. 248399 (shown)

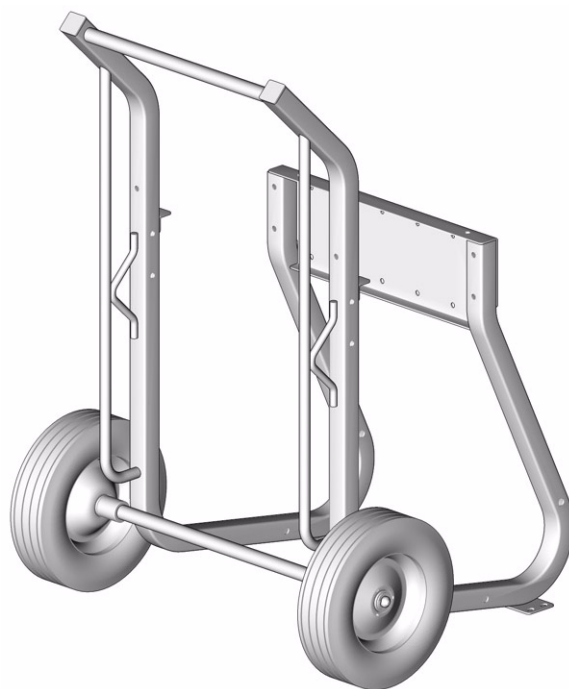
Cart Kit

Part No. 248400

Stand Kit

Part No. 248401

Caster Kit



TI5116a

PROVEN QUALITY. LEADING TECHNOLOGY.

248400 Stand Kit

1. Assemble legs (1) and supports (2) with screws (4) and nuts (3), hand-tight.
2. Adjust stand as needed to obtain proper spacing of holes to mount to bottom of proportioner frame. Tighten support screws (4) and nuts (3).
3. Select desired location for mounting stand. Be sure to leave sufficient space around equipment for operator access, routing of hoses and cabling, and ventilation.
5. Install proportioner on stand with screws (4) and nuts (3).
6. Install rear plate (5) on proportioner with self-tapping screws (6).



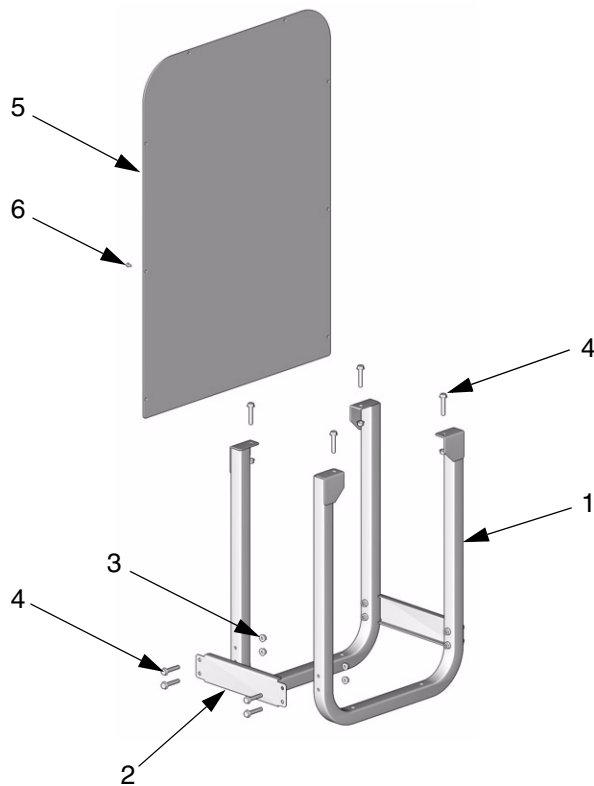
To install the 248401 Caster Kit on the stand, assemble the caster kit, see page 3.

4. *For floor mounting only:* Drill holes in floor, using mounting stand as a template, and install anchors as needed. Anchors should be long enough to keep the stand from tipping.

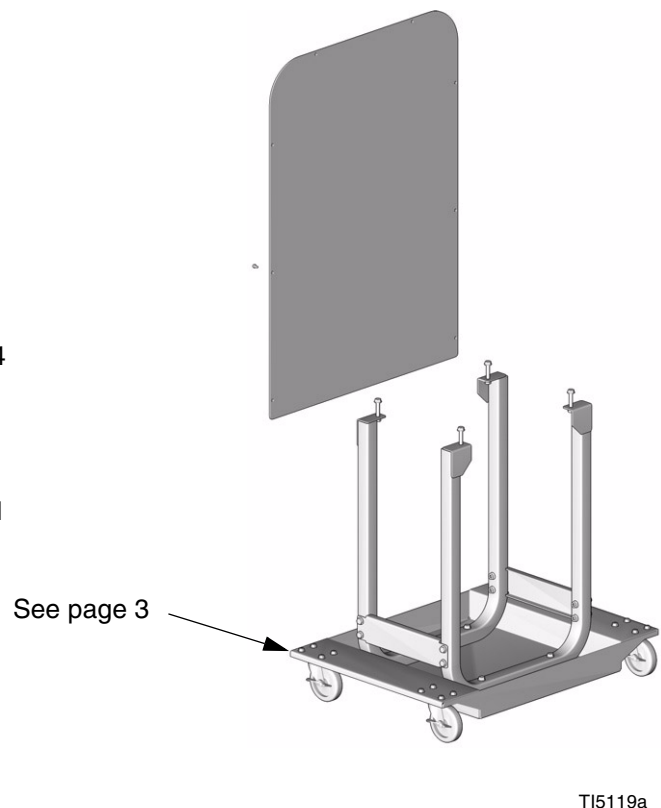
Ref.

Ref. No.	Part No.	Description	Qty.
1	15E039	LEG	2
2	15E041	SUPPORT, bracket	2
3	112958	NUT, hex, flange hd; 3/8-16	12
4	111194	SCREW, cap, flange hd; 3/8-16 x 2 in. (51 mm)	12
5	15D986	PLATE, rear	1
6	119291	SCREW, self-tapping	8

Stand Mounting



Caster Mounting

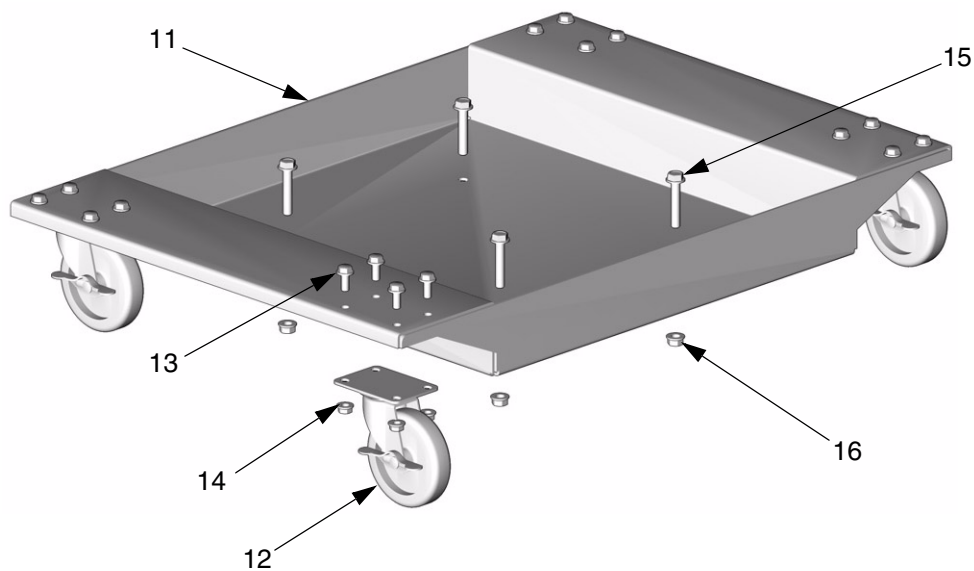


248401 Caster Kit

1. Assemble 248400 Stand Kit, see page 2.
2. Install casters (12) on base (11) with screws (13) and nuts (14).
3. Place stand-mounted proportioner on base (11). Secure with screws (15) and nuts (16).

Ref.

No.	Part No.	Description	Qty.
11	15E043	BASE, caster	1
12	116261	CASTER, swivel	4
13	110963	SCREW, cap, flange hd	16
14	110996	NUT, hex, flange hd	16
15	111194	SCREW, cap, flange hd; 3/8-16 x 2 in. (51 mm)	4
16	112958	NUT, hex, flange hd; 3/8-16	4

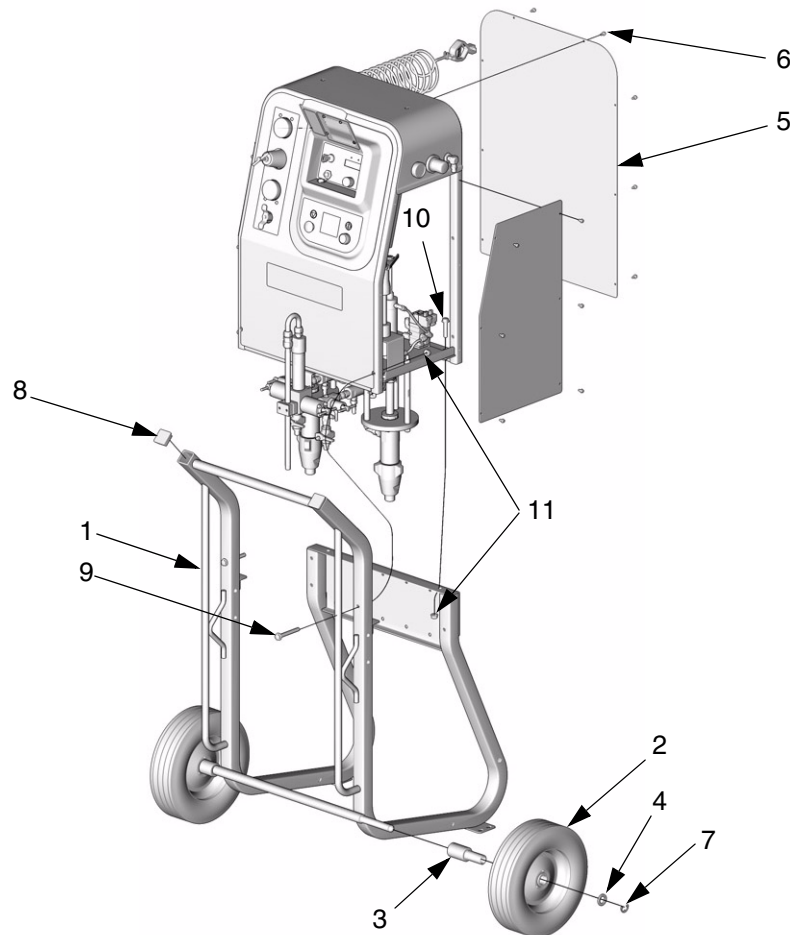


TI5118a

248399 Cart Kit

1. Place proportioner on cart (1). Install screws (10) and nuts (11) first, then install screws (9) and nuts (11).
2. Install rear plate (5) on proportioner with self-tapping screws (6).

Ref. No.	Part No.	Description	Qty.
1	15D775	CART	1
2	198720	WHEEL	2
3	15E106	BUSHING, wheel	2
4	154628	WASHER	2
5	15D986	PLATE, rear	1
6	119291	SCREW, self-tapping	8
7	113436	RING, retaining	2
8	111218	CAP	2
9	116935	SCREW, cap; 3/8-16 x 3 in. (76 mm)	2
10	111194	SCREW, hex hd flanged; 3/8-16 x 2 in. (51 mm)	2
11	112958	NUT, hex, flange hd; 3/8-16	4



TI5117a

All written and visual data contained in this document reflects the latest product information available at the time of publication.

Graco reserves the right to make changes at any time without notice.

MM 310674

Graco Headquarters: Minneapolis
International Offices: Belgium, China, Japan, Korea

GRACO INC. P.O. BOX 1441 MINNEAPOLIS, MN 55440-1441

www.graco.com

Printed in USA 310674B