

# Cleaning System

310623 Rev.A

## 234533

For use with Multi-Orifice Linear Streaming Applicator (MOLSA) to apply automotive Liquid Applied Sound Deadener (LASD) materials.

*100 psi (0.68 MPa, 6.8 bar) Maximum Working Pressure*

*120° F (35° C) Maximum Fluid Temperature*



**Read warnings and instructions.**

See table of contents, page 2.




PROVEN QUALITY. LEADING TECHNOLOGY.


# Table of Contents

Manual Conventions .....	2
Warnings .....	3
Setup .....	4
Maintenance .....	6

Parts .....	7
Technical Data .....	8
Graco Standard Warranty .....	10
Graco Information .....	10

## Manual Conventions


**WARNING**



**WARNING:** a potentially hazardous situation which, if not avoided, could result in death or serious injury.

CAUTION
<b>CAUTION:</b> a potentially hazardous situation which, if not avoided, may result in property damage or destruction of equipment.



### Note:



Additional helpful information.

# Warnings

The following warnings include general safety information for this equipment. More specific warnings are included in the text where applicable.

	 <b>Warning</b>
	<p><b>EQUIPMENT MISUSE HAZARD</b></p> <p>Misuse can cause death or serious injury.</p> <ul style="list-style-type: none"><li>• Do not exceed the maximum working pressure or temperature rating of the lowest rated system component. See <b>Technical Data</b> in all equipment manuals.</li><li>• Use with water (or water treated with anti-fungal materials) only. See <b>Technical Data</b> in all equipment manuals.</li><li>• Check equipment daily. Repair or replace worn or damaged parts immediately.</li><li>• Do not alter or modify equipment.</li><li>• Use equipment only for its intended purpose. Call your Graco distributor for information.</li><li>• For professional use only.</li><li>• Locate away from traffic areas, sharp edges, moving parts, and hot surfaces.</li><li>• Do not use hoses to pull equipment.</li><li>• Comply with all applicable safety regulations.</li></ul>

# Setup



**FIG. 1: Typical Installation**

**Key:**

A	Tank Assembly	H	Sponge
B	Secondary Float Valve	J	Primary Float Valve
C	Air Pressure Regulator	K	Filter Valve
D	Diaphragm Pump	L	Primary Reservoir
E	Spray Bar	M	Sponge Holder
F	Drain Valve	N	Filter Housing
G	Water Supply Valve	P	Rollers
		Q	Spray Bar Bolt

## Mounting the tank

Secure the tank to the floor using the mounting holes on the tank legs. See Dimensions in the Technical Data on page 9.

## Connecting the water and air supply

Connect the 1/4 in. (6 mm) water and air supply lines to the tank assembly.

## Starting the pump

Graco Husky 515 Diaphragm pump (D52966) is used in this tank assembly. Refer to your Graco Diaphragm pump manual 308981 for setup and operation procedures.

## Filling the tank reservoir

1. Open the filter valves (K) and water supply valve (G) to allow the reservoir to fill.
2. Fill the primary reservoir (L) with water, approximately 13 gallons (49 liters), until the float valve (J) shuts off.
3. While the primary reservoir is filling, verify that the water is shut off to the primary float valve by gently lifting the second reservoir float lever (B).

4. If the water is shut off to the primary float valve, release the secondary float valve (B).
5. Adjust the float valve lever (J) so that the water level is even with the top of the rollers  $\pm 1/8$  in. (3 mm).
6. Add the antifungal fluid (NALCO 39M or equivalent) to the tank according to manufacturer's instructions.

## Setting the air pressure

Adjust the air pressure regulator (C) to the diaphragm pump (D). The pump should cycle once every second (approximately 20 psi [0.14 MPa, 1.4 bar]).

## Setting the spray bar and sponge

1. Adjust the spray bar (E) by loosening the hex bolts (Q), located on both ends of the spray bar.
2. While water is spraying from the spray bar, rotate the spray bar angle relative to the rollers to obtain the maximum roller revolutions per minute.
3. Tighten the bolts (Q).
4. Wet sponge in tank water. Squeeze sponge to remove any excess water.
5. Place sponge (H) in the holder (M). The bottom of the sponge should just contact the bottom of the holder.

# Maintenance

With use, the water will become saturated with the LASD material. If rotation of the rollers or the pump cycle rate slows down, you should change the water in the tank.

## Draining the tank water

1. Place bucket under drain valve (F).
2. Open drain valve (F) and let water empty into bucket.
3. While tank is draining, next to the water supply filter housing, turn off one of the water supply valves (G) or (K).
4. Once water level is within 1 in. of the bottom, reopen the water supply valve (G) to dilute the remainder of the water until clear water is circulating from the spray bar (E).

## Cleaning and replacing sponge

1. Remove sponge (H) and place it under the clean water. Rinse until clean.
2. To extend the life of the sponge, turn sponge upside down from its original position and place it in the holder (M).



Inspect sponge after cleaning. When sponge looks too worn, replace it.

## Cleaning and replacing roller assembly

1. While rollers (P) are running through clean water, rub rollers with your hands until build up of contaminants are removed.
2. Inspect the rollers (P). If the nap of the rollers is less than 1/16 in. (2 mm), replace with new rollers.
3. To replace rollers, remove pin (R).

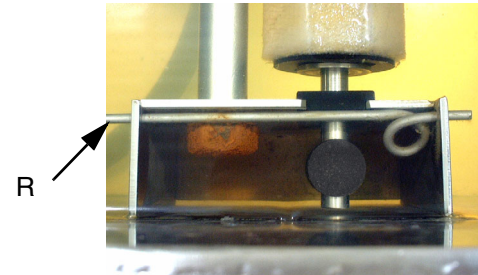


FIG. 2

4. Pull roller assembly from housing.
5. Pull off spring retainer (U), spring cover (W), spring (V), axle support (T), and washer (S). See FIG. 3.
6. Inspect parts and replace if damaged. See Parts, page 8, for replacement part numbers.
7. Remove end bearing (Z), roller (P), and center bearing (Y) from axle (X).
8. Inspect parts and replace if worn. See Parts, page 8, for replacement part numbers.
9. Reassemble roller assembly in the opposite order shown in steps 3 - 7.

## Roller Assembly

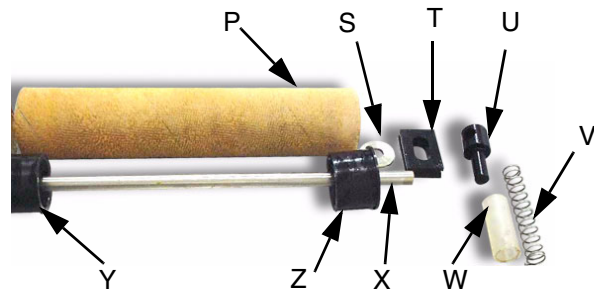


FIG. 3

**Draining remaining water**

1. While clean water is circulating from the spray bar, wipe the walls and bottom of reservoir until clean.
2. Turn off the regulator (C) to the diaphragm pump (D).
3. Allow the remaining reservoir water to drain by turning off water supply valve (G) or (K).
4. Close reservoir drain valve (F).
5. Close both valves (G) and (K) that isolate both recirculating filters.
6. Remove the filter housings (N) and screen elements 112302.
7. Clean and inspect screen elements. Reinstall into filter housings or replace if elements are damaged. See Parts, page 8, for replacement part numbers.

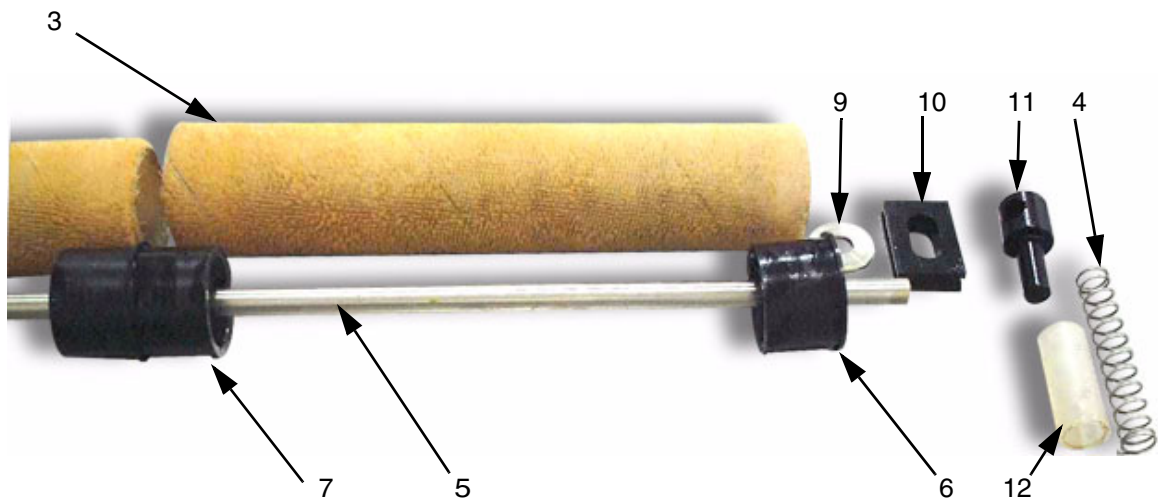
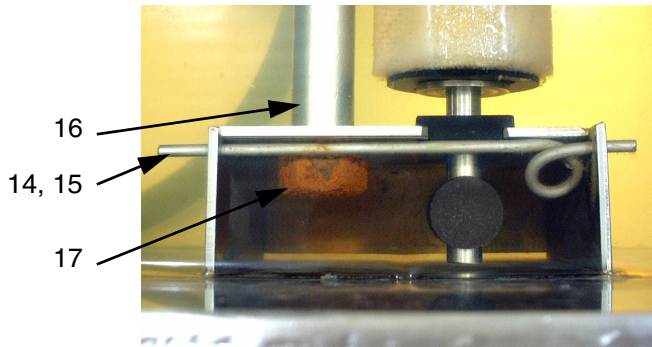
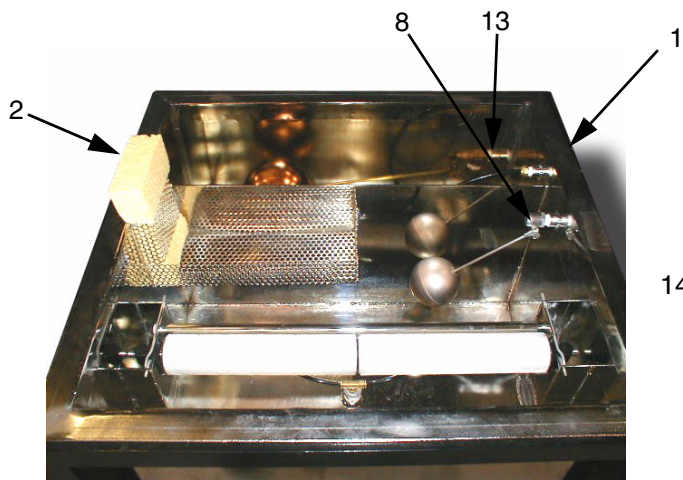


Use extra care to ensure that the element screens are round and properly seated in the housing counterbore.



Parts

MOLSA Cleaning System



Ref. No.	Part No.	Description
1	234533	TANK, assembly
2	118865	SPONGE
3	118864	ROLLER
4	119055	SPRING
5	119056	AXLE
6	119057	BEARING, end
7	119058	BEARING, center
8	119059	VALVE, float
9	119210	WASHER

Ref. No.	Part No.	Description	Qty.
10	119205	HOUSING, axle	2
11	119206	SPRING, guide	1
12	119211	TUBE, spring	2
13	119209	VALVE, float secondary	1
14	119207	PIN, left	1
15	119208	PIN, right	1
16	119204	BAR, spray	1
17	119203	BOLT	2
18	112302	FILTER, screen (not shown)	1



## Technical Data

Maximum Fluid Working Pressure	100 psi (0.68 MPa, 6.8 bar)
Maximum Air Pressure	100 psi (0.68 MPa, 6.8 bar)
Dimensions	36 x 27 x 25.75 in. (914 x 686 x 654 mm)
Mounting Leg Dimensions	24.5 x 25.5 x .44 in. mounting hole diameter (622 x 648 x 11 mm mounting hole diameter)
Wetted Parts	300 series stainless steel, brass, plastic, polypropylene, Santoprene®, nylon

*All other brand names or marks are used for identification purposes and are trademarks of their respective owners.*

# Graco Standard Warranty

Graco warrants all equipment referenced in this document which is manufactured by Graco and bearing its name to be free from defects in material and workmanship on the date of sale to the original purchaser for use. With the exception of any special, extended, or limited warranty published by Graco, Graco will, for a period of twelve months from the date of sale, repair or replace any part of the equipment determined by Graco to be defective. This warranty applies only when the equipment is installed, operated and maintained in accordance with Graco's written recommendations.

This warranty does not cover, and Graco shall not be liable for general wear and tear, or any malfunction, damage or wear caused by faulty installation, misapplication, abrasion, corrosion, inadequate or improper maintenance, negligence, accident, tampering, or substitution of non-Graco component parts. Nor shall Graco be liable for malfunction, damage or wear caused by the incompatibility of Graco equipment with structures, accessories, equipment or materials not supplied by Graco, or the improper design, manufacture, installation, operation or maintenance of structures, accessories, equipment or materials not supplied by Graco.

This warranty is conditioned upon the prepaid return of the equipment claimed to be defective to an authorized Graco distributor for verification of the claimed defect. If the claimed defect is verified, Graco will repair or replace free of charge any defective parts. The equipment will be returned to the original purchaser transportation prepaid. If inspection of the equipment does not disclose any defect in material or workmanship, repairs will be made at a reasonable charge, which charges may include the costs of parts, labor, and transportation.

**THIS WARRANTY IS EXCLUSIVE, AND IS IN LIEU OF ANY OTHER WARRANTIES, EXPRESS OR IMPLIED, INCLUDING BUT NOT LIMITED TO WARRANTY OF MERCHANTABILITY OR WARRANTY OF FITNESS FOR A PARTICULAR PURPOSE.**

Graco's sole obligation and buyer's sole remedy for any breach of warranty shall be as set forth above. The buyer agrees that no other remedy (including, but not limited to, incidental or consequential damages for lost profits, lost sales, injury to person or property, or any other incidental or consequential loss) shall be available. Any action for breach of warranty must be brought within two (2) years of the date of sale.

**GRACO MAKES NO WARRANTY, AND DISCLAIMS ALL IMPLIED WARRANTIES OF MERCHANTABILITY AND FITNESS FOR A PARTICULAR PURPOSE, IN CONNECTION WITH ACCESSORIES, EQUIPMENT, MATERIALS OR COMPONENTS SOLD BUT NOT MANUFACTURED BY GRACO.** These items sold, but not manufactured by Graco (such as electric motors, switches, hose, etc.), are subject to the warranty, if any, of their manufacturer. Graco will provide purchaser with reasonable assistance in making any claim for breach of these warranties.

In no event will Graco be liable for indirect, incidental, special or consequential damages resulting from Graco supplying equipment hereunder, or the furnishing, performance, or use of any products or other goods sold hereto, whether due to a breach of contract, breach of warranty, the negligence of Graco, or otherwise.

## **FOR GRACO CANADA CUSTOMERS**

The Parties acknowledge that they have required that the present document, as well as all documents, notices and legal proceedings entered into, given or instituted pursuant hereto or relating directly or indirectly hereto, be drawn up in English. Les parties reconnaissent avoir convenu que la rédaction du présente document sera en Anglais, ainsi que tous documents, avis et procédures judiciaires exécutés, donnés ou intentés, à la suite de ou en rapport, directement ou indirectement, avec les procédures concernées.

# Graco Information

**TO PLACE AN ORDER**, contact your Graco distributor or call to identify the nearest distributor.

**Phone:** 612-623-6921 **or Toll Free:** 1-800-367-4023, **Fax:** 612-378-3505

*All written and visual data contained in this document reflects the latest product information available at the time of publication.  
Graco reserves the right to make changes at any time without notice.*

**Sales Office:** Minneapolis  
**International Offices:** Belgium, Korea, Hong Kong, Japan  
**GRACO INC. P.O. BOX 1441 MINNEAPOLIS, MN 55440-1441**  
www.graco.com  
Printed in USA 310623A  
12/2003