

# Instructions - Parts List

## Accessory Hopper Kit for:

Ultra 395/495/595™; Ultra Max II 490/495/595™

Ultimate Nova 395™; Ultimate MX II 490/495/595™

Ultimate SuperNova 495/595™

ST Max 395/495/595™; ST Max II 490/495/595™

Performance Max 395/495/595™

390™ Electric Airless Sprayer



309825 rev.E

**Not for use with Hi-Boy models**

## 246388, Series A

### Pressure Relief Procedure

#### WARNING



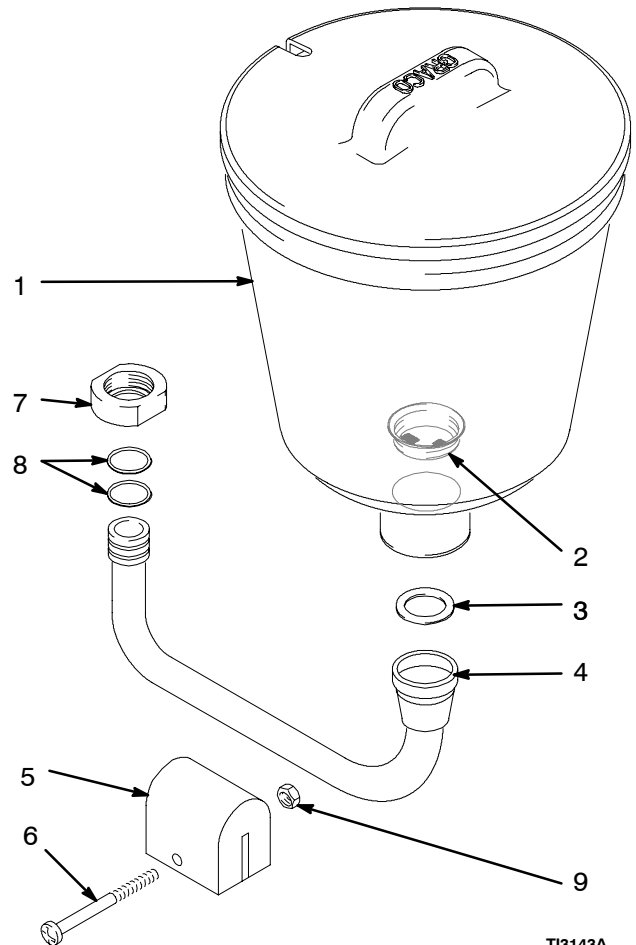
##### INJECTION HAZARD

System pressure must be manually relieved to prevent system from starting or spraying accidentally. Fluid under high pressure can be injected through skin and cause serious injury. To reduce risk of injury from injection, splashing fluid, or moving parts, follow **Pressure Relief Procedure** whenever you:

- are instructed to relieve pressure,
- stop spraying,
- check or service any system equipment,
- or install or clean spray tip.

1. Lock gun safety latch.
2. Turn ON/OFF switch to OFF.
3. Unplug power supply cord.
4. Unlock gun safety latch. Hold metal part of gun firmly to grounded metal pail. Trigger gun to relieve pressure.
5. Lock gun safety latch.
6. Open pressure drain valve. Leave pressure drain valve open until ready to spray again.

*If suspected that spray tip or hose is completely clogged, or that pressure has not been fully relieved after following steps above, VERY SLOWLY loosen tip guard retaining nut or hose end coupling to relieve pressure gradually, then loosen completely. Now clear tip or hose obstruction.*

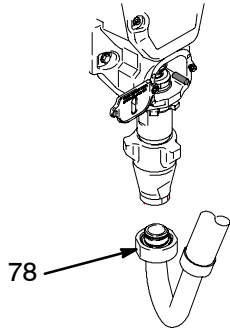


TI3143A

Ref. No.	Part No.	Description	Qty.
1	188787	HOPPER, 1.5 gallon	1
2	112133	SCREEN, hopper	1
3	104938	O-RING	1
4	287049	TUBE, inlet, hopper	1
5	15B778	FOOT, hopper	1
6	110883	SCREW, mach, pnh	1
7	15B434	NUT, jam	1
8	117559	O-RING	1
9	109466	NUT, lock, hex	1

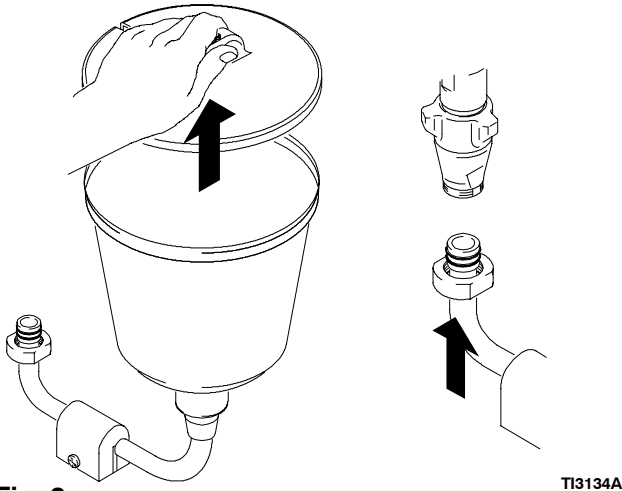
# Installation

1. Follow **Pressure Relief Procedure**.



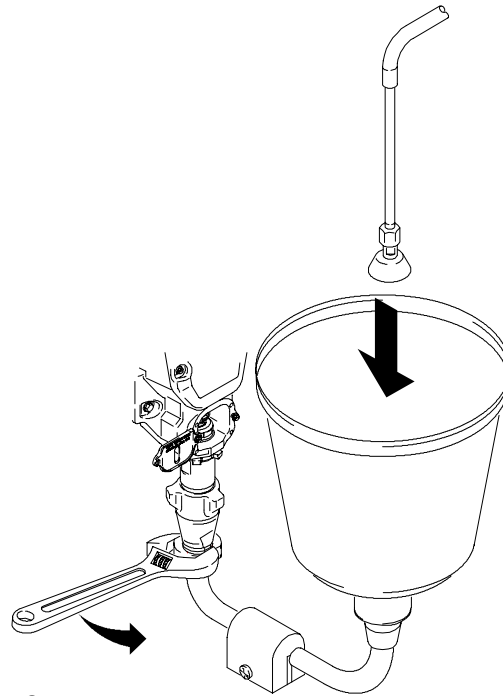
**Fig. 1**

2. Loosen jam nut (78) and remove suction set.



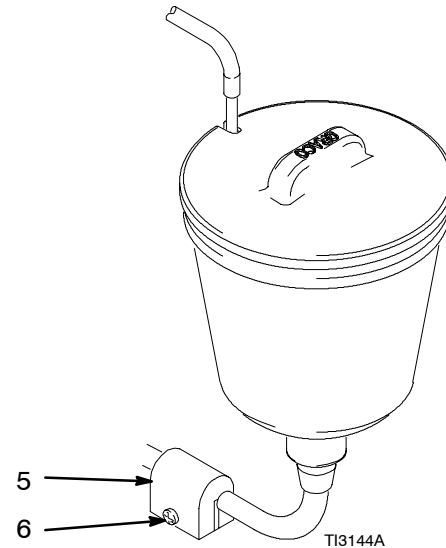
**Fig. 2**

3. Remove hopper lid. Insert hopper tube into pump.



**Fig. 3**

4. Tighten jam nut until hopper does not move. Place drain tube into hopper.



**Fig. 4**

5. Loosen screw (6) and position hopper foot (5) until sprayer feet and hopper foot are level. Tighten screw.

**TO PLACE AN ORDER OR FOR SERVICE**, contact your Graco distributor, or call **1-800-690-2894** to identify the nearest distributor.

*All written and visual data contained in this document reflects the latest product information available at the time of publication.  
Graco reserves the right to make changes at any time without notice.*

MM 309285

**Graco Headquarters:** Minneapolis

**International Offices:** Belgium, China, Japan, Korea

**GRACO INC. P.O. BOX 1441 MINNEAPOLIS, MN 55440-1441**

[www.graco.com](http://www.graco.com)

PRINTED IN USA 309825

1/2003 Rev. 1/2006