

# Instructions

# RACX HandTite™ Guard



## Model 246215, Series A, 7/8 in. Guard

4050 psi (280 bar) Maximum Working Pressure

## Model 246437, Series A, 11/16 in. Guard

4050 psi (280 bar) Maximum Working Pressure

309640 rev.A

- Patented aerodynamic design virtually eliminates paint buildup.
- Hand tighten on gun—no tools required.
- Fits all Graco airless spray guns.
- Use with RACX series SwitchTips only.
- Graco RACX SwitchTip sold separately.

### ⚠ WARNING

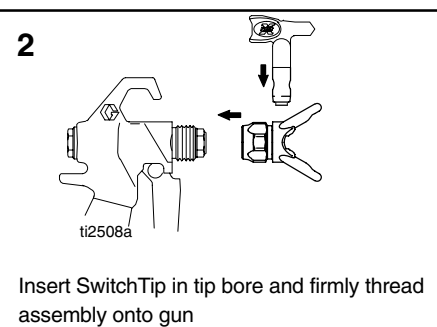
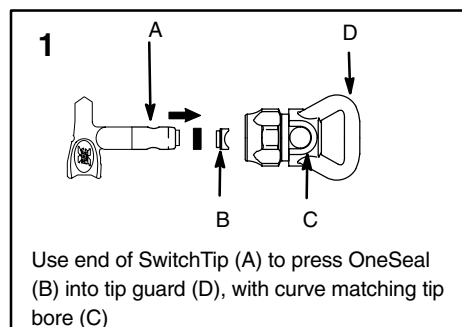
To reduce the risk of fluid injection or splashing in the eyes or on the skin, relieve air and fluid pressure in the system before installing, cleaning or changing tips. See **Pressure Relief Procedure** in gun or sprayer manual.

- **Keep clear of spray tip.** High-pressure spray or leaks can inject fluid into the body, resulting in serious injury which may require amputation. Never spray without a tip guard (D).
- Do not exceed 4050 psi (280 bar, 28 MPa) maximum working pressure.

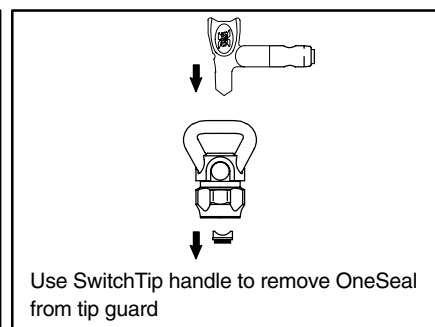
Failure to install or use the RAC™ tip guard assembly correctly may result in an undirected spray of fluid into the eyes or on the skin of the operator. Be sure you:

- Fully insert SwitchTip (A) into tip bore (C) in guard
- Do not trigger gun with SwitchTip handle between **Spray** and **Clear** positions
- Replace OneSeal™ when replacing worn SwitchTip

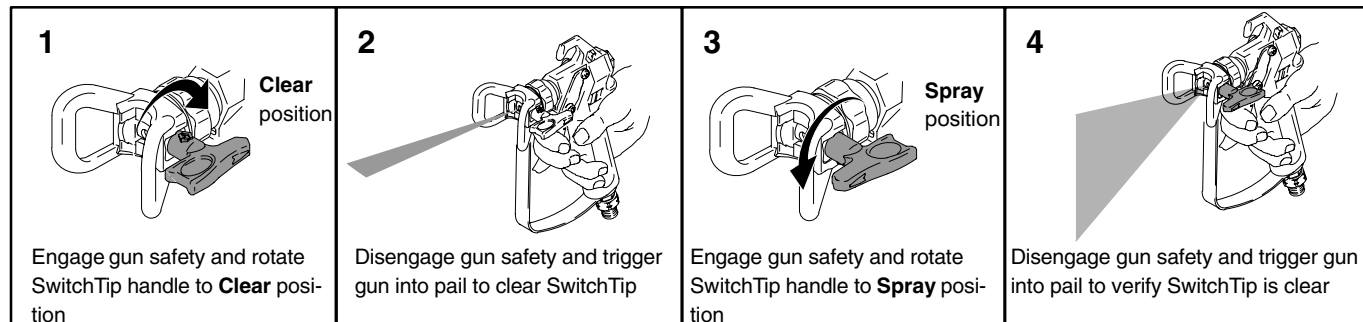
### Installing



### Disassembling



### Clearing a Clogged SwitchTip



**Note:** If SwitchTip is still clogged, follow **Pressure Relief Procedure** in gun or sprayer manual, and remove SwitchTip for cleaning.

# Graco Phone Number

***TO PLACE AN ORDER***, contact your Graco distributor, or call this number to identify the distributor closest to you: **1-800-690-2894 Toll Free**

**GRACO INC. P.O. BOX 1441 MINNEAPOLIS, MN 55440-1441**

©COPYRIGHT 2002, GRACO INC.  
Graco Inc. is registered to I.S. EN ISO 9001

Printed in USA 309640 October 2002