

# INSTRUCTIONS



# 309515

Rev A



For detailed Cleanshot™ Shut-Off Valve information and warnings, see Instructions and Parts List manual 309314.

INSTRUCTIONS

First choice when  
quality counts.™

This manual contains kit  
installation instructions only.

## Cleanshot™ Shut-Off Valve Repair Kit

Part No. 244162

3600 psi (248 bar) Maximum Working Pressure

### Pressure Relief Procedure

#### WARNING



psi/MPa/bar

To reduce risk of serious injury, including fluid injection, follow this procedure when checking or servicing any part of spray system, when installing, cleaning or changing spray tips, and whenever you stop spraying.

1. Engage trigger safety.
2. Shut off pump or sprayer, disconnect power source, and open all air bleed valves.
3. Disengage trigger safety.
4. Rotate spray valve knob counter-clockwise to FLUSH position.

5. Hold metal part of gun firmly to side of a grounded metal pail. Trigger gun into paint pail to relieve pressure.
6. Engage trigger safety.
7. Open pump drain valve to relieve fluid pressure in pump, hose, and pole gun. Triggering in-line valve to relieve pressure may not be sufficient. Have container ready to catch drainage.

*If you suspect the spray tip or hose is completely clogged or that pressure has not been fully relieved after following steps above, VERY SLOWLY loosen tip guard retaining nut or hose end coupling to relieve pressure gradually. Then loosen it completely. Clear tip or hose obstruction.*

GRACO INC. P.O. BOX 1441 MINNEAPOLIS, MN 55440-1441

©COPYRIGHT 2002, GRACO INC.

Graco Inc. is registered to I.S. EN ISO 9001

# Cleanshot™ Shut–Off Valve Repair Kit 244162

## Changing the Needle

NOTE: The components included in the Cleanshot Valve Repair Kit are packaged as two separate modules, individual pieces cannot be ordered separately.

### Disassembly (upper module)

1. Without the spray tip installed, start sprayer.
2. Turn knob on Cleanshot Shut–Off Valve counter-clockwise to FLUSH position (page 3).
3. Flush and prime spray system.
4. Follow **Pressure Relief Procedure** described on the front cover of this manual.
5. Install spray tip.
6. Turn knob on Cleanshot Shut–Off Valve to SPRAY (page 3).
7. Rotate Cleanshot Shut–Off Valve to any desired position within 180°. Do not use any tools.
8. Refer to your separate gun instruction manual for operating and tip cleaning instructions.

## Flush and Spray

1. Follow **Pressure Relief Procedure** described on the front cover of this manual.
2. Remove tip guard.(not shown)
3. Using a wrench, loosen seat (31a).
4. Remove seat (31a).
5. Unscrew module and remove from valve body.

### Reassembly (upper module)

1. Insert seat 3a module into valve body.
2. Tighten seat (31a) to 26–32 ft–lbs (35–43 N•m).

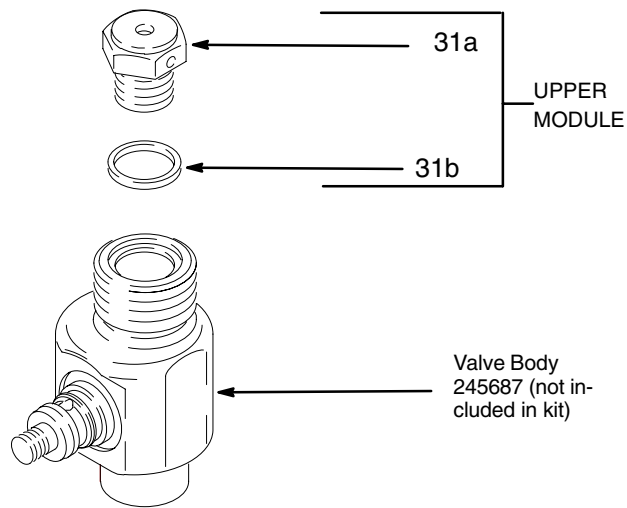
### Disassembly (lower module)

1. Using a wrench, loosen nut (31j).
2. Remove nut (31j).
3. Remove lower module from valve body.

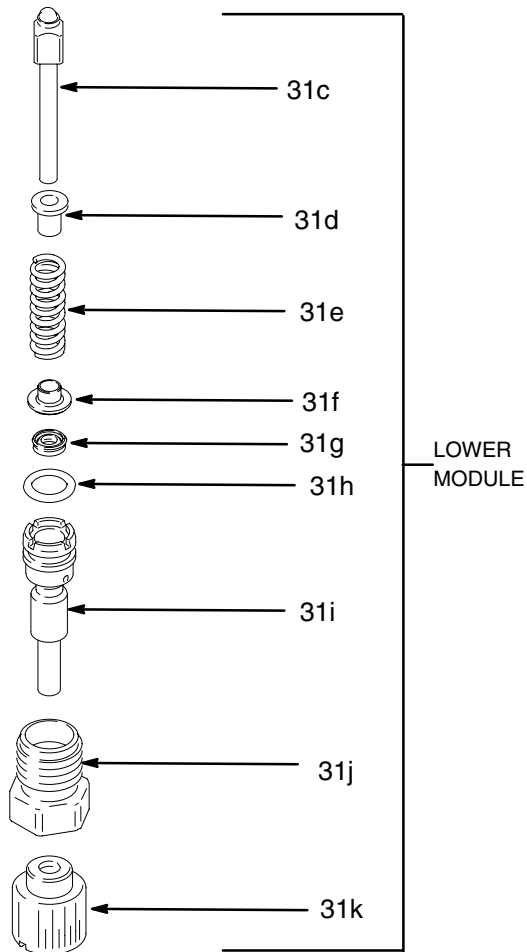
### Reassembly (lower module)

1. Insert new lower module into valve body.
2. Tighten nut (31j) to 26–32 ft–lbs (35–43 N•m).

# Cleanshot™ Shut-Off Valve Repair Kit 244162



Ref. No.	Part No.	Description	Qty.
31	244162	KIT, Cleanshot™ repair includes parts 31a–31k	1
31a		SEAT, valve	1
31b		GASKET	1
31c		RETAINER, ball	1
31d		DAMPENER, spring	1
31e		SPRING, compression	1
31f		GUIDE, spring	1
31g		SEAL, u-cup	1
31h		PACKING, o-ring	1
31i		RETAINER, u-cup	1
31j		CAP, end, u-cup	1
31k		KNOB, valve	1



## THE GRACO WARRANTY AND DISCLAIMERS

### WARRANTY

Graco warrants all equipment manufactured by it and bearing its name to be free from defects in material and workmanship on the date of sale by an authorized Graco distributor to the original purchaser for use. As purchaser's sole remedy for breach of this warranty, Graco will, for a period of twelve months from the date of sale, repair or replace any part of the equipment proven defective. This warranty applies only when the equipment is installed, operated and maintained in accordance with Graco's written recommendations.

This warranty does not cover, and Graco shall not be liable for, any malfunction, damage or wear caused by faulty installation, misapplication, abrasion, corrosion, inadequate or improper maintenance, negligence, accident, tampering, or substitution of non-Graco component parts. Nor shall Graco be liable for malfunction, damage or wear caused by the incompatibility with Graco equipment of structures, accessories, equipment or materials not supplied by Graco, or the improper design, manufacture, installation, operation or maintenance of structures, accessories, equipment or materials not supplied by Graco.

This warranty is conditioned upon the prepaid return of the equipment claimed to be defective to an authorized Graco distributor for verification of the claim. If the claimed defect is verified, Graco will repair or replace free of charge any defective parts. The equipment will be returned to the original purchaser transportation prepaid. If inspection of the equipment does not disclose any defect in material or workmanship, repairs will be made at a reasonable charge, which charges may include the costs of parts, labor and transportation.

### DISCLAIMERS AND LIMITATIONS

The terms of this warranty constitute purchaser's sole and exclusive remedy and are in lieu of any other warranties (express or implied), **including warranty of merchantability or warranty of fitness for a particular purpose**, and of any non-contractual liabilities, including product liabilities, based on negligence or strict liability. Every form of liability for direct, special or consequential damages or loss is expressly excluded and denied. In no case shall Graco's liability exceed the amount of the purchase price. Any action for breach of warranty must be brought within two (2) years of the date of sale.

### EQUIPMENT NOT COVERED BY GRACO WARRANTY

Graco makes no warranty, and disclaims all implied **warranties of merchantability and fitness for a particular purpose**, with respect to accessories, equipment, materials, or components sold but not manufactured by Graco. These items sold, but not manufactured by Graco (such as electric motor, switches, hose, etc.) are subject to the warranty, if any, of their manufacturer. Graco will provide purchaser with reasonable assistance in making any claim for breach of these warranties.

**TO PLACE AN ORDER**, contact your Graco distributor, or call this number to identify the distributor closest to you:  
**1-800-690-2894 Toll Free**