

INSTRUCTIONS



309452

Rev. B



INSTRUCTIONS

KEEP FOR REFERENCE.

Read this and all related manuals for important warnings and instructions.

First choice when quality counts.™

Board Repair Kit 244981

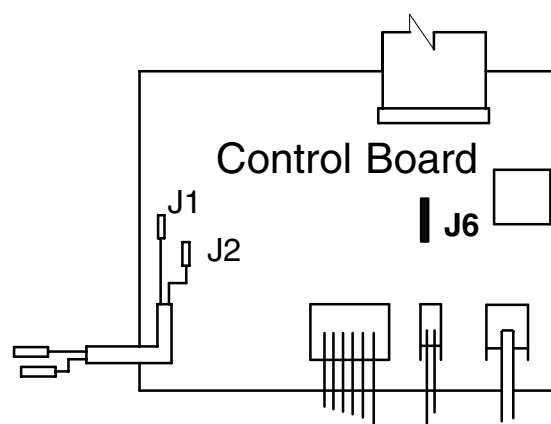
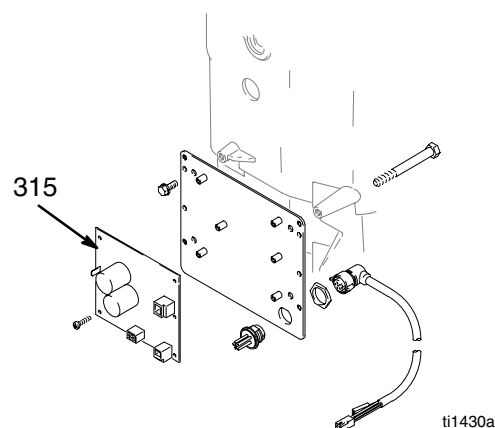
Installation

1. Remove existing control board (315) per instructions in Manual 309379.

⚠ CAUTION

Inaccurate system analysis occurs if J6 is clipped for HydraMax 225 Sprayers or if J6 is not clipped for HydraMax 300 and 350 Sprayers.

2. Install new board. HydraMax 300 and 350 sprayers; clip J6 wire.
3. No setup is required. Display appears – sprayer is ready.



GRACO INC. P.O. BOX 1441 MINNEAPOLIS, MN 55440-1441

©COPYRIGHT 2001, GRACO INC.

Graco Inc. is registered to I.S. EN ISO 9001

Graco Phone Number

TO PLACE AN ORDER, contact your Graco distributor,
or call **1-800-690-2894** to identify the nearest distributor.

*All written and visual data contained in this document reflect the latest product information available at the time of publication.
Graco reserves the right to make changes at any time without notice.*

Sales Offices: Minneapolis, Detroit
International Offices: Belgium, Korea, Hong Kong, Japan

GRACO INC. P.O. BOX 1441 MINNEAPOLIS, MN 55440-1441

<http://www.graco.com>

PRINTED IN U.S.A. 309452 10/2001, Revised 8/2003