

Series 750 Hose Reel

309442 rev.E

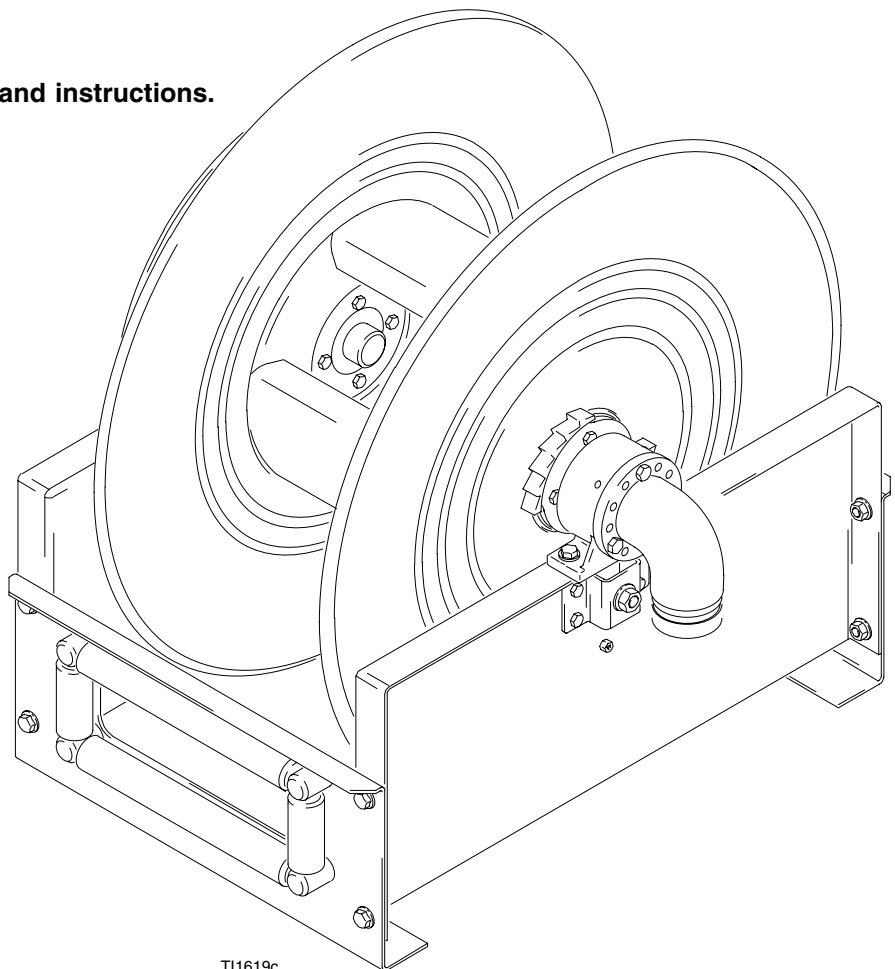
Model 245410, Series C

This reel is not to be used for overhead mount applications.

Low Pressure Fuel Dispense Reel: 375 psi (2.59 MPa, 25.9 bar) Maximum Working Pressure



Read warnings and instructions.



T11619c

PROVEN QUALITY. LEADING TECHNOLOGY.

Table of Contents

Warnings	3	Service	
		Swivel	10
Installation		Spring Canister	11
Typical Layout	5	Reel Ratchet and Dog	11
Installing a Hose	6	Parts Drawing	12
Adjusting Spring Tension	7	Parts List	13
Maintenance		Technical Data	14
Pressure Relief Procedure	8	Dimensions	15
Replacing the Service Hose	8	Graco Standard Warranty	16
Oiling the Hose Rollers	9	Graco Information	16

Symbols

Warning Symbol



This symbol alerts you to the possibility of serious injury or death if you do not follow the instructions.

Caution Symbol

CAUTION

This symbol alerts you to the possibility of damage to or destruction of equipment if you do not follow the instructions.

WARNING



INSTRUCTIONS

EQUIPMENT MISUSE HAZARD

Equipment misuse can cause the equipment to rupture or malfunction and result in serious injury.

- This equipment is for professional use only.
- Read all instruction manuals, tags, and labels before operating the equipment.
- Use the equipment only for its intended purpose. If you are not sure, call your Graco distributor.
- Do not alter or modify this equipment. Use only genuine Graco parts and accessories. Modifying parts can cause a malfunction and result in serious bodily injury.
- Check equipment daily. Repair or replace worn or damaged parts immediately.
- Do not exceed the maximum working pressure of the lowest rated system component. Refer to the **Technical Data** on page 14 for the maximum working pressure of this equipment.
- Use fluids and solvents that are compatible with the equipment wetted parts. Refer to the **Technical Data** section of all equipment manuals. Read the fluid and solvent manufacturer's warnings.
- Do not use hoses to pull equipment.
- Route hoses away from traffic areas, sharp edges, moving parts, and hot surfaces. Do not expose hoses to temperatures above 82°C (180°F) or below -40°C (-40°F).
- Do not lift pressurized equipment.
- Comply with all applicable local, state, and national fire, electrical, and safety regulations.
- If you are adding a service hose and dispensing valve to a bare hose reel, be sure you know the maximum working pressure of all the components.

WARNING



TOXIC FLUID HAZARD

Hazardous fluid or toxic fumes can cause serious injury or death if inhaled, swallowed, splashed in the eyes, or splashed on the skin.

- Know the specific hazards of the fluid you are using.
- Store hazardous fluid in an approved container. Dispose of hazardous fluid according to all local, state and national guidelines.
- Always wear protective eyewear, gloves, clothing, and a respirator as recommended by the fluid and solvent manufacturer.



FIRE AND EXPLOSION HAZARD

Improper grounding, poor ventilation, open flames, or sparks can cause a hazardous condition and result in a fire or explosion and serious injury.

- Be sure the entire fluid system is properly grounded. The hoses installed with these hose reels must be electrically conductive. The hose reel is grounded by connecting electrically conductive supply hoses to a properly grounded system. Refer to your pump instruction manual for complete details.
- If there is any static sparking or you feel an electric shock while using this equipment, **stop dispensing immediately**. Do not use the equipment until you identify and correct the problem.
- Provide fresh air ventilation to avoid the buildup of flammable fumes from solvents or the fluid being dispensed.
- Keep the dispensing area free of debris, including solvent, rags, and spilled gasoline.
- Do not smoke while dispensing flammable fluids.

Installation–Typical Layout

The installation shown in Fig.1 is only a guide for selecting and installing a hose reel system. The components and accessories shown are the minimum requirements for all systems; however, it is not an actual system design. Contact your Graco distributor for assistance in designing a system to suit your needs.

⚠ WARNING

Never allow the reel to spin freely. Doing so causes the hose to spin out of control, which could cause serious injury if you are hit by the hose.

CAUTION

A flexible hose connection must be used between the hose reel inlet and the source of supply to prevent possible misalignment and binding.

⚠ WARNING

This hose reel is intended for floor-mounted applications only. Do not install this reel in an overhead mounting.

NOTE: Parts are not proportional.

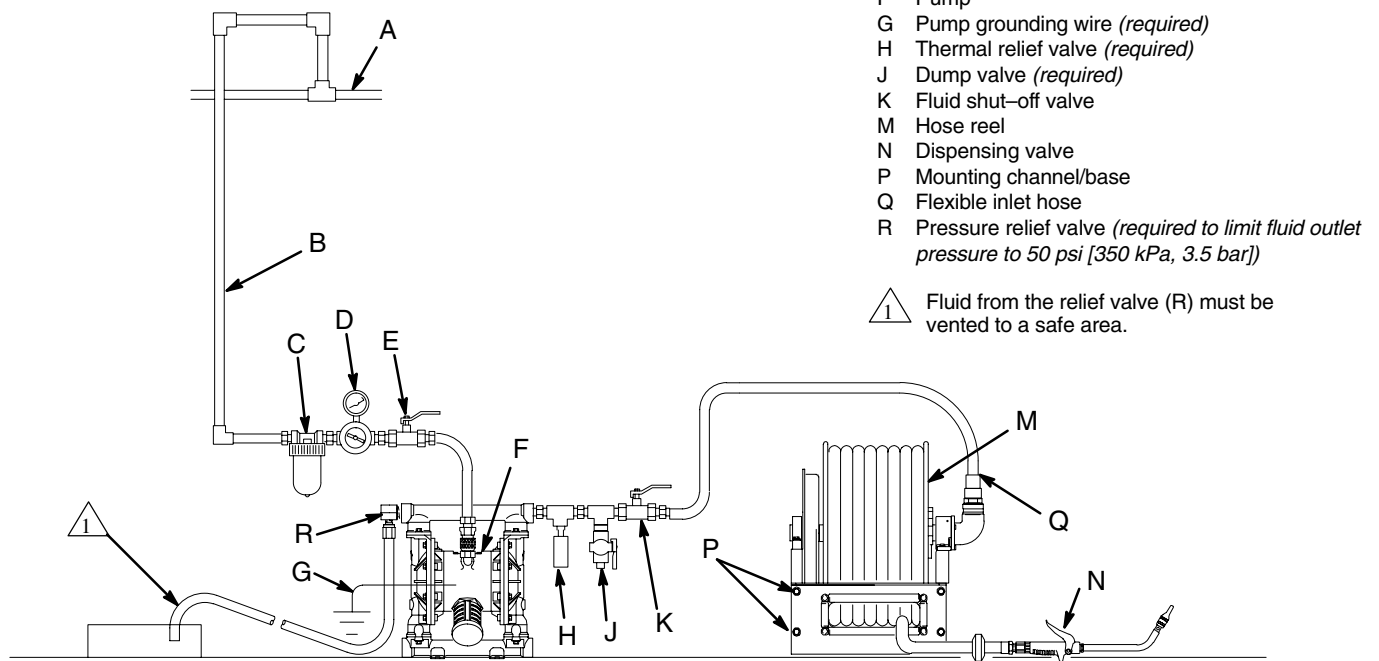


Fig. 1

TT1622d

Installation–Hose

To install a hose on a hose reel with the proper amount of spring tension, follow these steps:

⚠ WARNING

Improper grounding can cause a hazardous condition and may result in fire or explosion and serious injury. The hoses installed with this reel must be electrically conductive.

⚠ WARNING

Always wear heavy, non-slippery gloves when adjusting the spring tension to protect your hands from being cut on the hose reel.

1. Clamp the hose reel to a flat surface.
 2. Place a piece of tape on the side of the reel flange as a visual reference point for counting reel rotations.
 3. Unlatch the reel drum, and allow it to slowly rotate until all spring tension has been released. Then rotate the reel in the direction of the arrow shown in Fig. 2 to achieve the proper amount of spring tension for the hose you are installing, approximately 14–15 turns.
- NOTE:** Release the reel only at points where it is securely latched.
4. Attach a C-clamp to the reel flange, as shown in Fig. 2, to help prevent the reel from unintentionally becoming unlatched and spinning freely.

⚠ WARNING

Never allow the reel to spin freely. Doing so causes the hose to spin out of control, which could cause serious injury if you are hit by the hose.

5. Uncoil and extend the new hose, and loosely install the hose stop (25) near the outlet end of the hose.
6. Attach the other end of the new hose to the 90-degree elbow.
7. Remove the C-clamp from the reel flange.
8. Pull the hose firmly enough to release the latch, then slowly allow the hose to retract.
9. Ensure that the hose can be pulled out all the way and that it fully retracts. If it does not pull out or retract properly, see **Adjusting Spring Tension** on page 7.
10. Position the hose stop (25) so that the hose extends far enough for all operators to reach the dispensing valve.

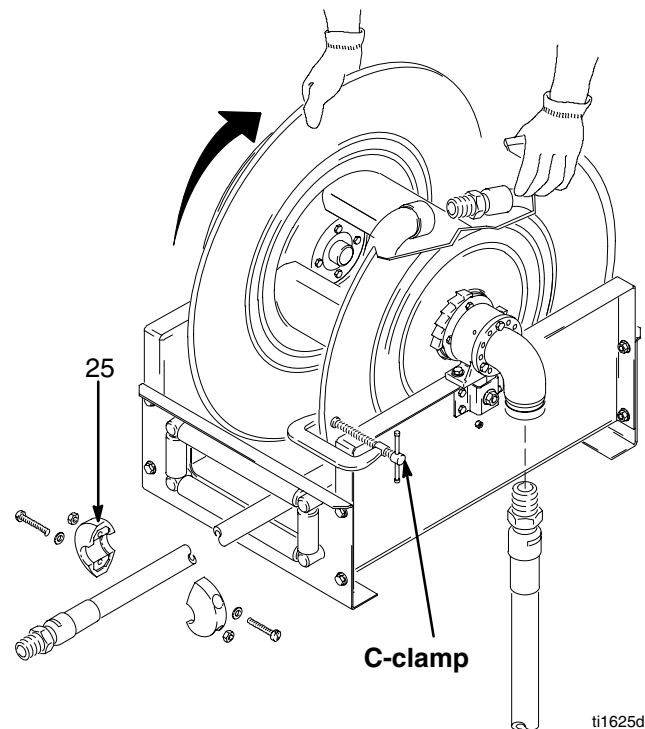


Fig. 2

Installation—Adjusting Spring Tension

If the hose cannot be pulled out all the way, or if it does not retract all the way back onto the hose reel, you need to adjust the spring tension. To do so, follow these steps:

! WARNING

Always wear heavy, non-slippery gloves when adjusting the spring tension to protect your hands from being cut on the hose reel.

1. Pull the hose out and engage the latch.
2. Remove the dispensing valve (not shown) and the hose stop (25). See Fig. 3.
3. Pull the loose end of the hose back in through the hose rollers, and manually wrap the hose onto the reel.

4. Rotate the reel in the direction of the appropriate arrow shown in Fig. 3, keeping the hose wrapped on the reel. Each rotation of the reel increases or decreases enough spring tension to retract or let out approximately 5 ft (1.5 m) of hose.
5. Check the spring tension. The hose must pull out fully and retract fully.
6. Repeat Steps 4 and 5 until you have the proper amount of spring tension.

CAUTION

Do not increase the spring tension so much that the spring winds up tightly before the hose is fully extended. A spring that is wound too tightly stops the reel from rotating before the hose is fully extended, which puts excessive strain on the hose and reel spring and could damage the reel.

7. Reroute the hose through the hose rollers, and reinstall the hose stop and dispensing valve.

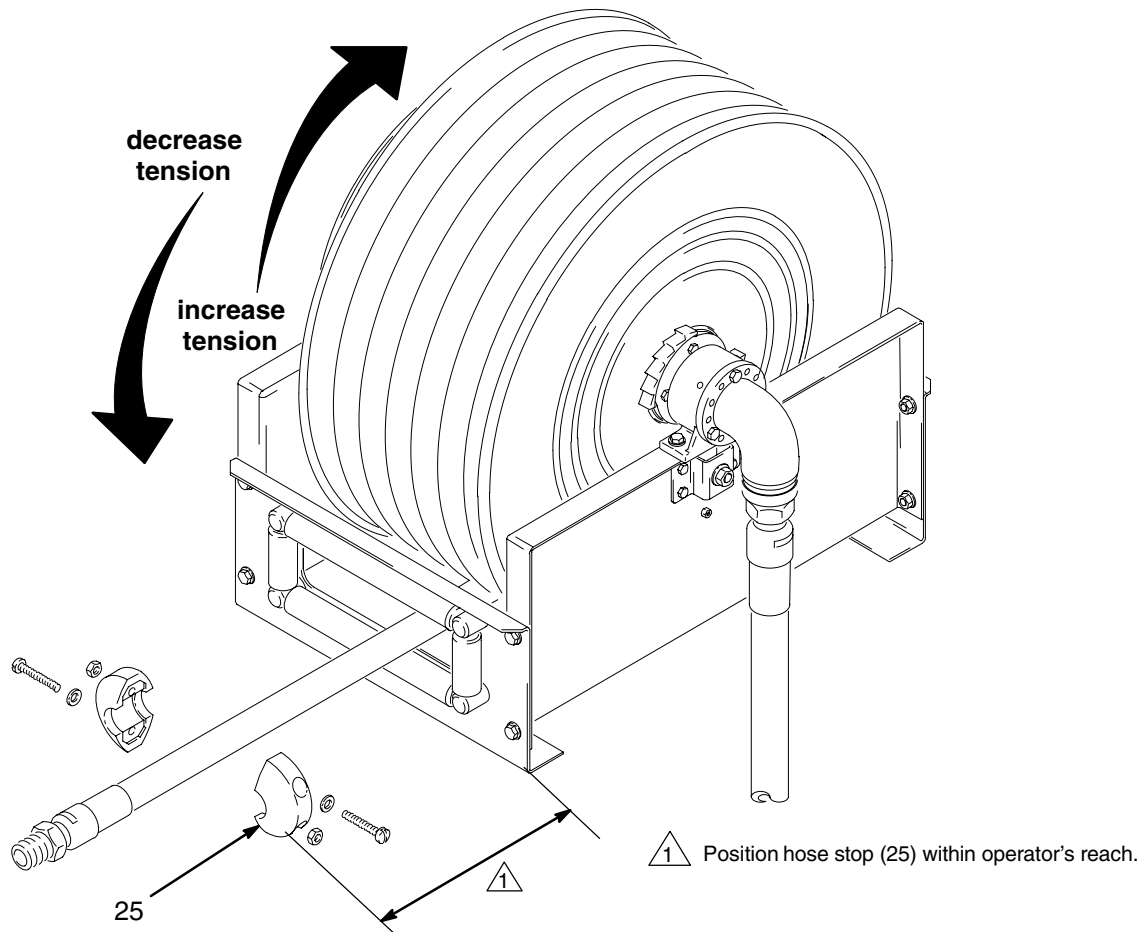


Fig. 3

TI1624c

Maintenance

Pressure Relief Procedure

WARNING

The system pressure must be manually relieved to prevent the system from dispensing accidentally. To reduce the risk of an injury from injection, splashing fluid, or moving parts, follow the **Pressure Relief Procedure** whenever you

- Are instructed to relieve the pressure
- Stop dispensing
- Check or service any of the system equipment
- Install or clean the dispensing valve

1. Close the supply pump's bleed-type master air valve (required in pneumatic systems).
2. Open the dispensing valve until pressure is fully relieved.
3. Open the dump valve at the pump fluid outlet, and leave it open until you are ready to use the system again.

If you suspect that the dispensing valve or extension is clogged or that pressure has not been fully relieved after following all the steps above, very slowly loosen the coupler or hose end coupling, and allow pressure to be relieved gradually, then loosen the part completely. Then clear the clog.

Replacing the Service Hose

WARNING

To reduce the risk of serious injury whenever you are instructed to relieve pressure, always follow the **Pressure Relief Procedure** at left.

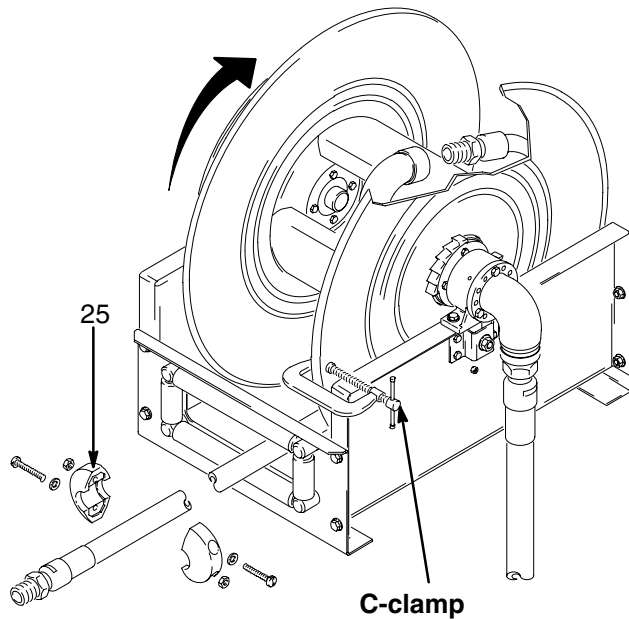
1. **Relieve the pressure** if you are replacing the service hose on a reel that is already truck-mounted. Then go to Step 3. Otherwise, start at Step 2.
2. Clamp the hose reel to a flat surface if you are replacing the service hose on a reel that is not mounted anywhere.
3. Fully extend the hose and latch the reel.
4. Attach a C-clamp to the reel flange to help prevent the reel from unintentionally becoming unlatched and spinning freely. See Fig. 4.

Maintenance

WARNING

Never allow the reel to spin freely. Doing so causes the hose to spin out of control, which could cause serious injury if you are hit by the hose.

5. Disconnect the service hose from the 90-degree elbow, and remove it.
6. Uncoil and extend the new hose, and install the hose stop (25) near the outlet end of the hose.
7. Attach the other end of the new hose to the 90-degree elbow.
8. Remove the C-clamp from the reel flange.
9. Pull the hose firmly enough to release the latch, then slowly allow the hose to retract.
10. Position the hose stop (25) so the hose extends far enough for all operators to reach the dispensing valve.

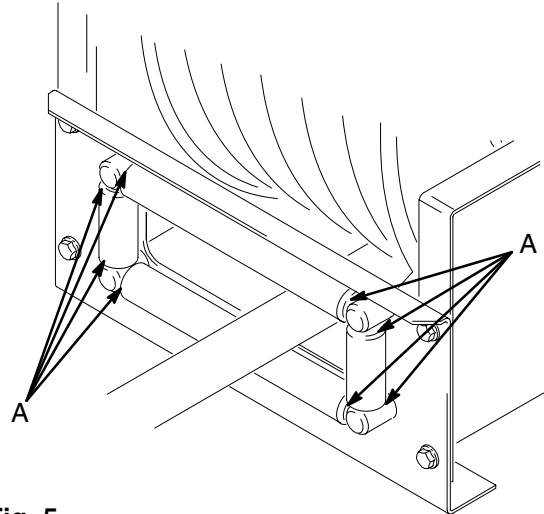


TI1625e

Fig. 4

Oiling the Hose Rollers

Every six months, apply one or two drops of light motor oil to lubricate the hose reel at point A. See Fig. 5.



TI1626A

Fig. 5

Service

Swivel and Bearings

⚠ WARNING

To reduce the risk of serious injury whenever you are instructed to relieve pressure, always follow the **Pressure Relief Procedure** at left.

1. **Relieve the pressure.**
2. Remove the 90° inlet adapter (24) (see Fig. 6).
3. Lubricate the shaft and bearing surfaces with high-quality grease. Bearings are fitted with grease zerks and require periodic lubrication.
4. Install the parts as shown in Fig. 6.

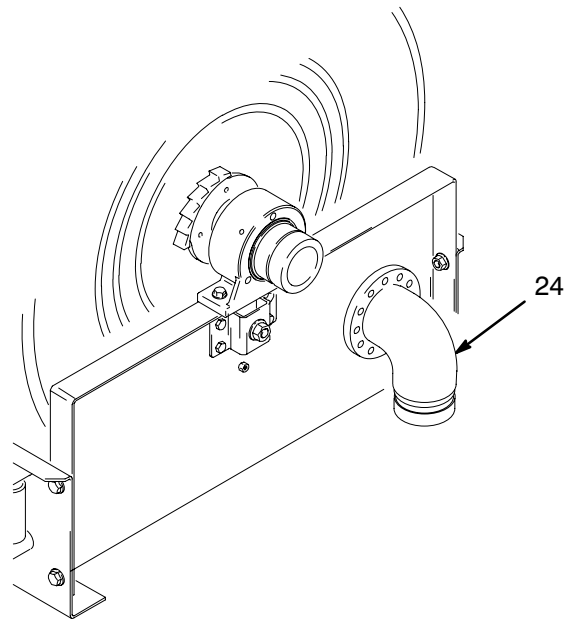


Fig. 6

TI1628c

Service

Spring Canister

To replace the spring canister, follow the steps below. **Do not** attempt to service the spring inside of the spring canister. Read the warning below regarding the spring hazard.

WARNING



HOSE REEL SPRING HAZARD

The only service you should perform on the reel spring is replacing the spring canister. The spring is under extreme tension and could be propelled out of the opened canister and cause serious injury.

1. Remove dispense valve and hose stop (25).
2. Unlatch reel and let reel unwind to a free state before beginning disassembly.
3. Remove four base screws (1) on spring side of reel base.
4. Remove screws (13) holding bearings to frame. This will allow the spool to be removed to avoid damage to the bearings.
5. Slide side frame (12) with springs (5) attached out and gently set reel spool (9) on the ground.
6. Remove screws (15) holding spring to base. Discard spring.
7. Place new spring on side frame (12).
8. Reassemble reel in reverse order.

WARNING

Never allow the reel to spin freely. Doing so causes the hose to spin out of control, which could cause serious injury if you are hit by the hose.

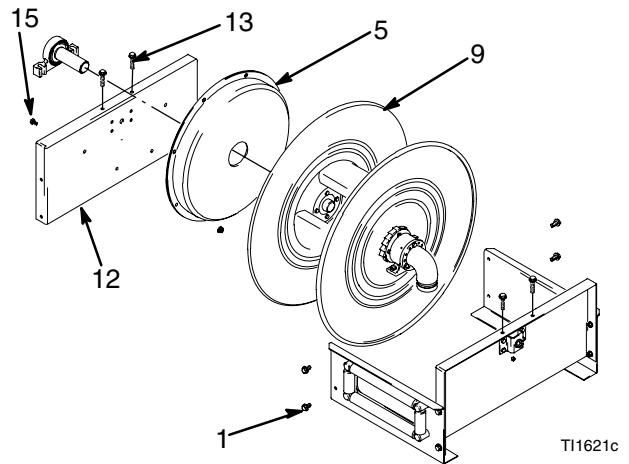


Fig. 7

Reel Ratchet and Dog

If the ratchet and dog malfunction or become sluggish, disassemble the mechanism. See Fig. 8. Clean and lubricate or replace the broken or worn components as necessary. See the **Parts List** on page 13 for part numbers and names.

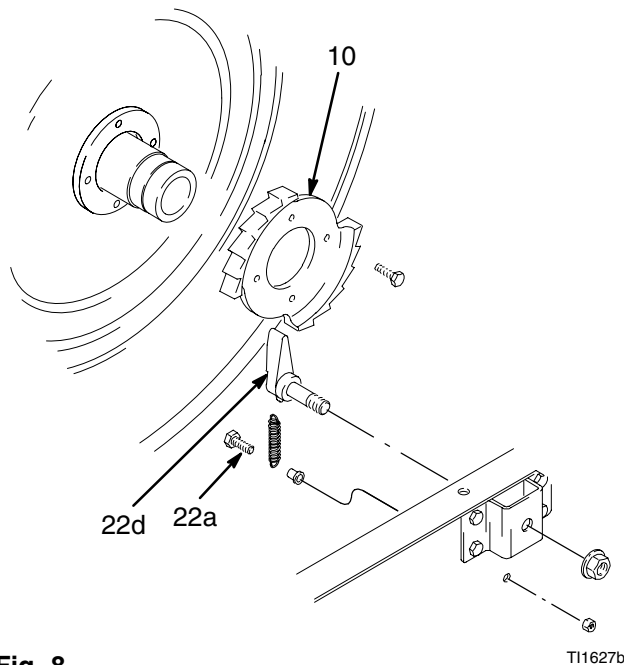
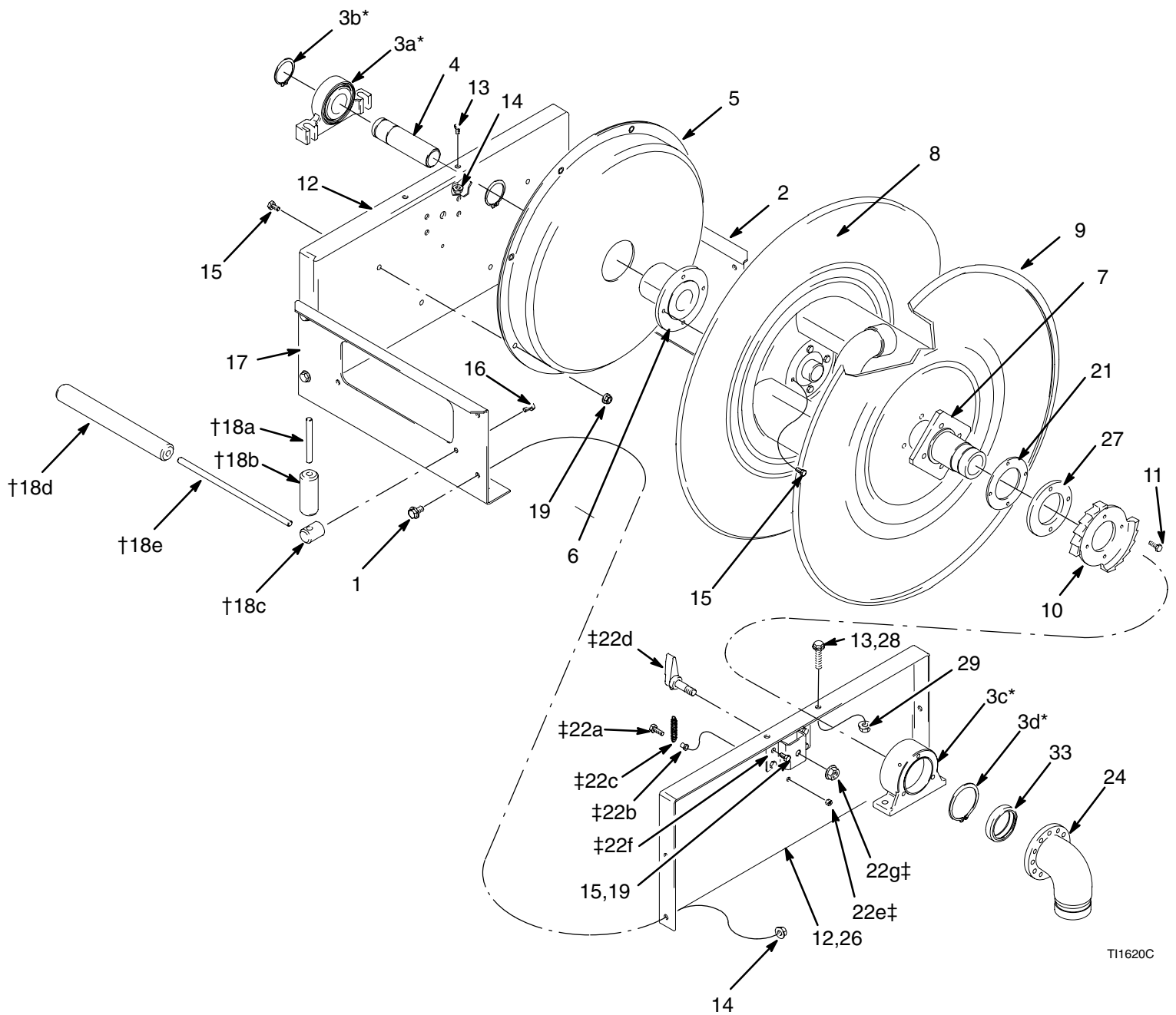


Fig. 8

Parts Drawing



TI1620C

Parts List

Ref No.	Part No.	Description	Qty	Ref No.	Part No.	Description	Qty
1		SCREW; 3/8-16 x 5/8 in.	8	19		NUT, hex; 1/4-20	12
2	117132	END FRAME	1	21		SPACER, ratchet	1
3	119443	KIT, bearing		22	117149	KIT, latch pawl	
		Includes items 3a-3d	1			Includes items 22a-22g	1
3a*		PILLOW BLOCK ASSY.	1	22a†		SCREW; 10-32 x 7/8 in.	1
3b*		RING, snap	2	22b†		BUSHING, latch	1
3c*		BEARING HOUSING ASSY.	1	22c†		SPRING, latch	1
3d*		RING, snap	1	22d†		PAWL, latch	1
4	117134	SHAFT, support	1	22e†		NUT, Nyloc; 10-32	1
5	117135	CASE, spring	1	22f†		BRACKET, latch	1
6	117136	CAM, spring	1	22g†		NUT, hex; 1/2-20	1
7		SPINDLE	1	24	119445	ADAPTER, 90° inlet	1
9		SPOOL, reel	1	25	119486	HOSE STOP, 1-1/2 in. hose	1
10	117137	RATCHET, latch	1	26	119444	FRAME, side, right	1
11		SCREW; 1/4-20 x 1-1/2 in.	4	27		SPACER, ratchet	1
12	117138	FRAME, side, left	1	28		SCREW; 5/16-18 x 1 in.	2
13		SCREW; 3/8-16 X 1-3/4 in.	2	29		NUT, hex; 5/16-18	2
14		NUT, hex; 3/8-16	10	30		SCREW; 5/16-18 x 3/4 in.	3
15		SCREW; 1/4-20 x 1/2 in.	12	31		SCREW; 3/8-16 x 1 in.	2
16		SCREW; 5/16-18 x 1/2 in.	4	32	119446	SHAFT, outlet	1
17	117140	FRAME, roller	1	33	119487	SEAL, ring	1
18	117141	KIT, roller guide					
		Includes items 18a-18e	1				
18a†		PIN, roller, guide	2				
18b†		GUIDE, roller	2				
18c†		POST, roller, guide	4				
18d†		ROLLER, guide	2				
18e†		PIN, roller, guide	2				

* These parts are included in Repair Kit 119443, which may be purchased separately. Individual parts are not for sale.

† These parts are included in Repair Kit 117141, which may be purchased separately. Individual parts are not for sale.

‡ These parts are included in Repair Kit 117149, which may be purchased separately. Individual parts are not for sale.

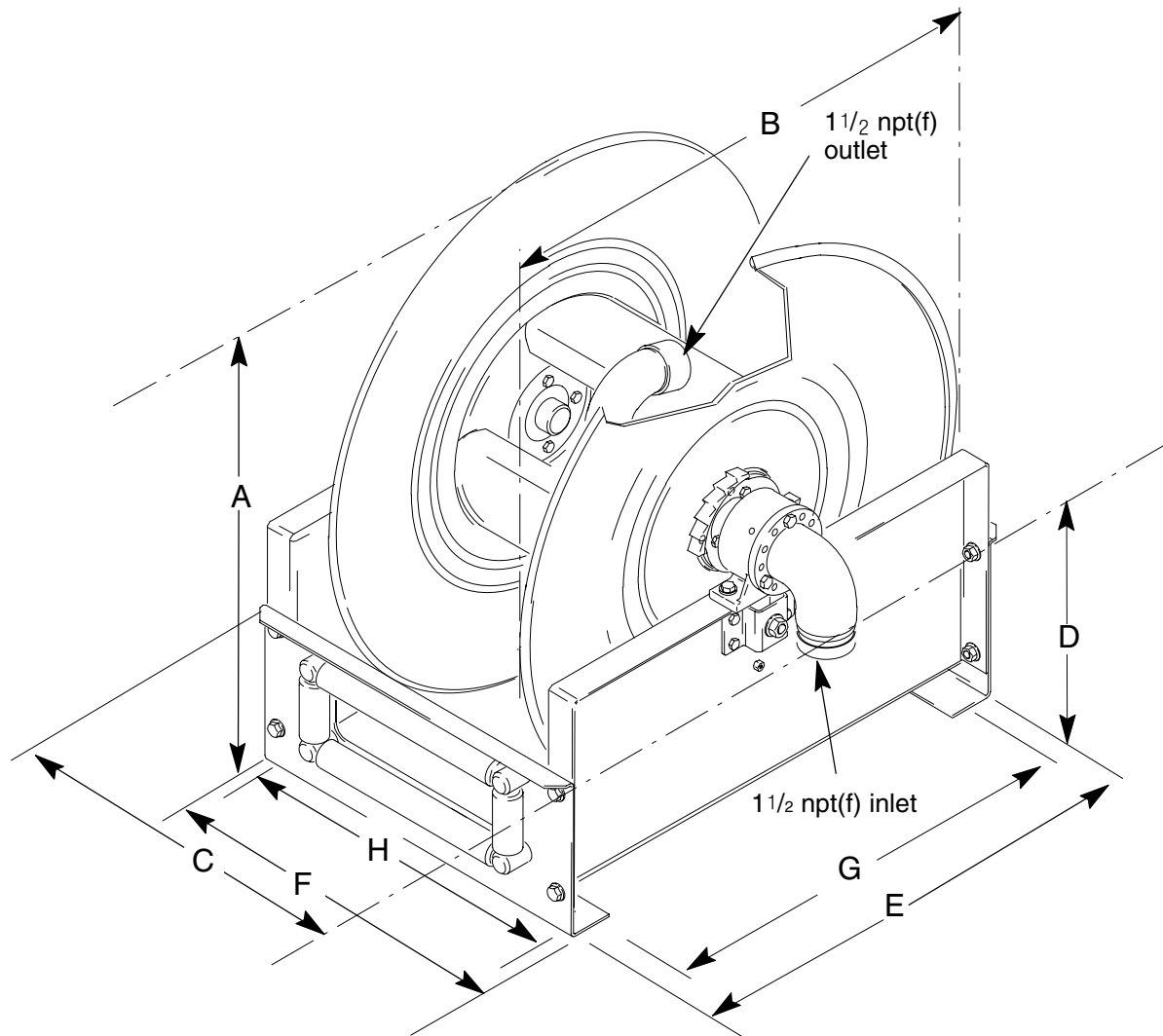
Technical Data

Maximum working pressure	375 psi (2.59 MPa, 25.9 bar)
Inlet size	1–1/2 npt(f)
Outlet size	1–1/2 npt(f)
* Maximum sound pressure	81 dB(A)
Operating temperature	–40° F to 160° F (–40° C to 82° C)
External parts	powder–coat painted steel, cast aluminum, zinc–plated steel, EPDM, galvanized steel, cast iron, Nylon, nitrile rubber
Wetted parts	cast aluminum, Viton®
Dry weights	139 lb (63 kg)

* *Sound pressure was measured per ISO 3744 at assumed maximum retraction rate at assumed operator position.*

Viton® is a registered trademark of the DuPont Co.

Dimensions



ti1619d

- A 26.25 in. (667 mm) overall height
- B 26.25 in. (667 mm) overall length
- C 21.88 in. (556 mm) overall width
- D 13.75 in. (349 mm) base to port center
- E 24.25 in. (616 mm) base length
- F 17.50 in. (445 mm) base width
- G 22.125 in. (562 mm) mounting hole length
- H 13.50 in. (343 mm) mounting hole width

Graco Standard Warranty

Graco warrants all equipment manufactured by Graco and bearing its name to be free from defects in material and workmanship on the date of sale to the original purchaser for use. With the exception of any special, extended, or limited warranty published by Graco, Graco will, for a period of twelve months from the date of sale, repair or replace any part of the equipment determined by Graco to be defective. This warranty applies only when the equipment is installed, operated and maintained in accordance with Graco's written recommendations.

This warranty does not cover, and Graco shall not be liable for general wear and tear, or any malfunction, damage or wear caused by faulty installation, misapplication, abrasion, corrosion, inadequate or improper maintenance, negligence, accident, tampering, or substitution of non-Graco component parts. Nor shall Graco be liable for malfunction, damage or wear caused by the incompatibility of Graco equipment with structures, accessories, equipment or materials not supplied by Graco, or the improper design, manufacture, installation, operation or maintenance of structures, accessories, equipment or materials not supplied by Graco.

This warranty is conditioned upon the prepaid return of the equipment claimed to be defective to an authorized Graco distributor for verification of the claimed defect. If the claimed defect is verified, Graco will repair or replace free of charge any defective parts. The equipment will be returned to the original purchaser transportation prepaid. If inspection of the equipment does not disclose any defect in material or workmanship, repairs will be made at a reasonable charge, which charges may include the costs of parts, labor, and transportation.

THIS WARRANTY IS EXCLUSIVE, AND IS IN LIEU OF ANY OTHER WARRANTIES, EXPRESS OR IMPLIED, INCLUDING BUT NOT LIMITED TO WARRANTY OF MERCHANTABILITY OR WARRANTY OF FITNESS FOR A PARTICULAR PURPOSE.

Graco's sole obligation and buyer's sole remedy for any breach of warranty shall be as set forth above. The buyer agrees that no other remedy (including, but not limited to, incidental or consequential damages for lost profits, lost sales, injury to person or property, or any other incidental or consequential loss) shall be available. Any action for breach of warranty must be brought within two (2) years of the date of sale.

Graco makes no warranty, and disclaims all implied warranties of merchantability and fitness for a particular purpose in connection with accessories, equipment, materials or components sold but not manufactured by Graco. These items sold, but not manufactured by Graco (such as electric motors, switches, hose, etc.), are subject to the warranty, if any, of their manufacturer. Graco will provide purchaser with reasonable assistance in making any claim for breach of these warranties.

In no event will Graco be liable for indirect, incidental, special or consequential damages resulting from Graco supplying equipment hereunder, or the furnishing, performance, or use of any products or other goods sold hereto, whether due to a breach of contract, breach of warranty, the negligence of Graco, or otherwise.

FOR GRACO CANADA CUSTOMERS

The parties acknowledge that they have required that the present document, as well as all documents, notices and legal proceedings entered into, given or instituted pursuant hereto or relating directly or indirectly hereto, be drawn up in English. Les parties reconnaissent avoir convenu que la rédaction du présente document sera en Anglais, ainsi que tous documents, avis et procédures judiciaires exécutés, donnés ou intentés à la suite de ou en rapport, directement ou indirectement, avec les procédures concernées.

Graco Information

TO PLACE AN ORDER, contact your Graco distributor, or call this number to identify the distributor closest to you:

1-800-533-9655 Toll Free

612-623-6928

612-378-3590 Fax

All written and visual data contained in this document reflects the latest product information available at the time of publication.

Graco reserves the right to make changes at any time without notice.

Graco Headquarters: Minneapolis
International Offices: Belgium, Korea, China, Japan

www.graco.com

PRINTED IN USA 309442 11/2001, Revised 09/2004