

# Instructions



## Second Gun Kit

309416 Rev. C

### LineLazer™ III 3900/5900 Airless Line Stripers

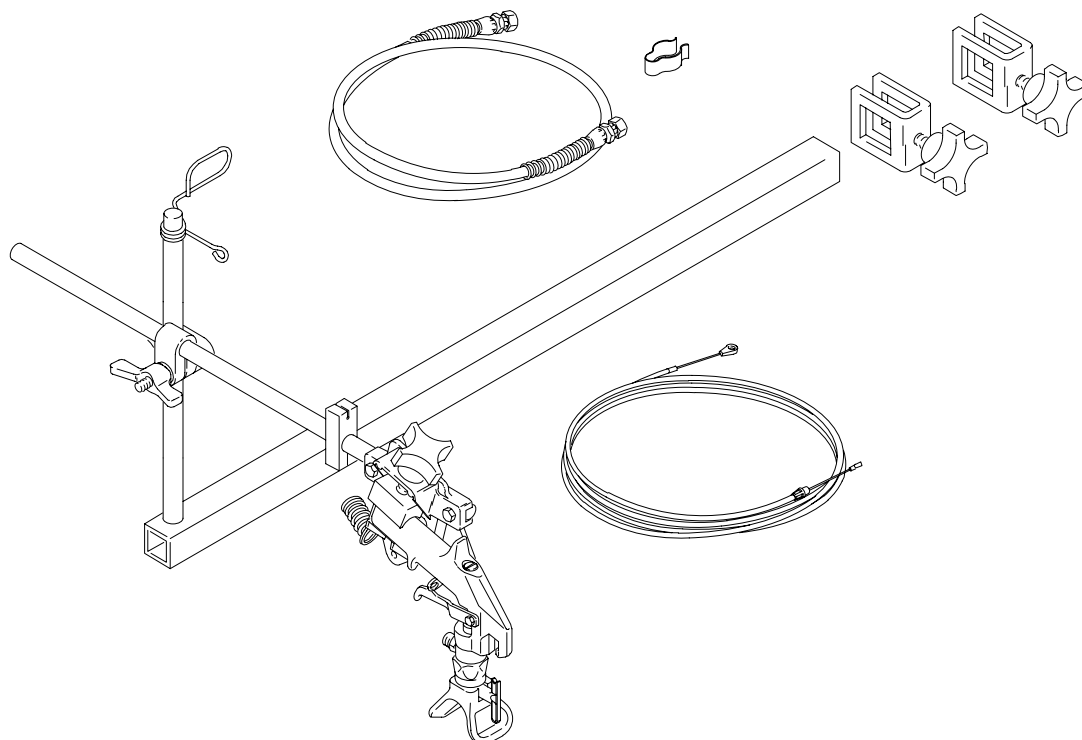
3300 psi (22.7MPa, 227 bar) Maximum Working Pressure

#### Model 245465

Includes Size 319 LineLazer Tip  
and Size 517 SwitchTip™



Read warnings and instructions.



8807A

PROVEN QUALITY. LEADING TECHNOLOGY.

# Table of Contents

Pressure Relief Procedure .....	2
How to Disengage and Engage the Trigger Cable ...	4
Second Gun Kit Installation .....	4
Adjust Simultaneous Gun Triggering .....	5
Positioning the Gun Arm Assembly .....	6
How to Mount the Gun in the Gun Holder .....	7
Trigger Cable and Dual Gun Selector Operation ....	8
Parts .....	9
Warranty .....	10
Graco Phone Number .....	10

# Symbols

## Warning Symbol



This symbol alerts you to the possibility of serious injury or death if you do not follow the instructions.

## Caution Symbol



This symbol alerts you to the possibility of damage to or destruction of equipment if you do not follow the corresponding instructions.

## Pressure Relief Procedure

### **WARNING**



#### **INJECTION HAZARD**

Fluid under high pressure can be injected through the skin and cause serious injury. To reduce the risk of an injury from injection, splashing fluid, or moving parts, follow the **Pressure Relief Procedure** whenever you:

- are instructed to relieve the pressure,
- stop spraying/dispersing,
- check or service any of the system equipment,
- or install or clean the spray tip/nozzle.

1. Engage the gun safety latch.
2. Turn the ON/OFF switch to OFF.

3. Flip the pressure control switch to OFF.
4. Disengage the gun safety latch. Hold a metal part of the gun firmly to the side of a grounded metal pail, and trigger the gun to relieve pressure.
5. Engage the gun safety latch.
6. Open the pressure drain valve, having a container ready to catch the drainage. Leave the valve open until you are ready to spray again.
7. Disconnect the spark plug cable.

If you suspect that the spray tip or hose is completely clogged, or that pressure has not been fully relieved after following the steps above, very slowly loosen the hose coupling or fitting to relieve pressure gradually, then loosen completely. Now clear the tip or hose.

[illegible]

# How to Disengage and Engage the Trigger Cable

## ⚠ WARNING

The gun is remotely triggered with the dual gun selector on the handle bar.

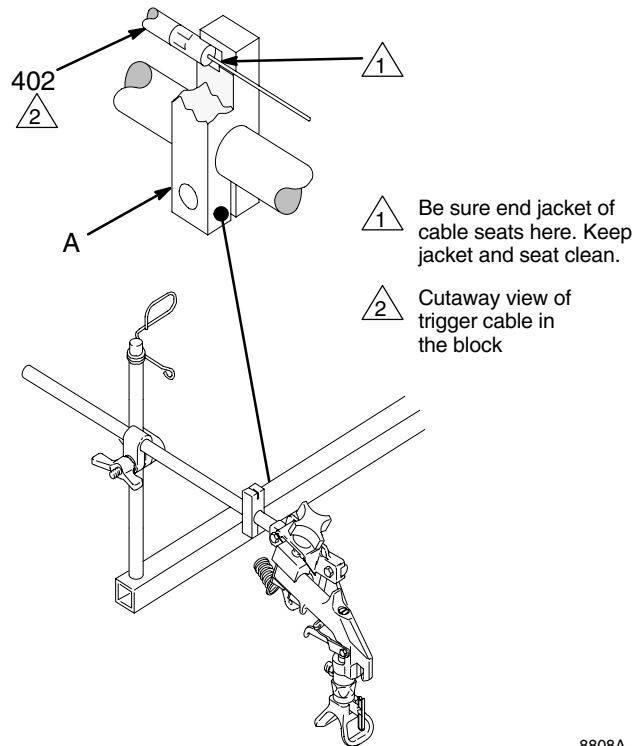
To reduce the risk of an injection injury due to remotely triggering the gun by accident, always disengage the trigger cable from the block before handling the gun. See Fig. 2, Detail A. **THE GUN WILL TRIGGER BRIEFLY WHEN RELEASING THE CABLE!** Before you remove the gun from the holder, engage the gun's trigger safety latch.

## ⚠ CAUTION

Keep the seat in the trigger cable block (A) and the end of the cable jacket clean at all times to be sure the trigger cable functions properly.

**To disengage the cable**, grasp the cable (402) behind the block (A). Pull the cable back 1/2 inch (13 mm) and then out of the block. **THE GUN WILL TRIGGER BRIEFLY!**

**To engage the cable**, slide the cable (402) into the block (A), making sure the end of the cable jacket seats firmly in the seat of the block. **THE GUN WILL TRIGGER BRIEFLY!**



8808A

Fig. 1

## Second Gun Kit Installation

**NOTE:** Fig. 2, which shows the second gun (outside gun) being mounted on the pump side of the cart, represents the installation at step 3.

**NOTE:** If you want to switch the gun assemblies to the other side of the unit at this time, see **To mount the guns on the engine side of the cart** on page 6 before installing the second gun kit.

1. Disengage the cable (402) from the block (A) of the unit's existing gun. See Fig. 1. Engage the trigger safety.
2. Loosen the carriage clamps (D). Slide the carriage bar (B) off the cart.
3. For mounting the second gun bar on the pump side of the cart: Slide a clamp (405) onto the carriage bar (B) as shown in Fig. 2. Slide the carriage bar through the pump-side carriage clamp (D) and into the center of the cart. Now slide another clamp (405) onto the carriage bar.

For mounting the second gun bar on the engine side of the cart: Follow Step 3, except slide the carriage bar through the engine-side carriage clamp (D) and the into the center of the cart. The knobs of the clamps (405) must face back toward the handle bars.

4. Slide the carriage bar (B) through the opposite carriage clamp. Tighten the carriage clamps (D).
5. Slide the second gun bar (404) far enough into the carriage bar that the clamp (405) engages the bar. Position the clamps (405) over the notches in the carriage bar (B) and tighten the clamps.

**NOTE:** For stable gun operation, the second gun bar (404) has a maximum recommended extension from the carriage bar of about 11–1/4" (286 mm).

6. Disconnect the trigger cable from the second gun at the screw (34). See Fig. 2, Detail B.
7. Unscrew the filter's second outlet cap (J). Screw the hose (403) onto the filter nipple.
8. Remove the guide clamp screw from the area (F).

9. Snap the cable bushing (H) into the fluid plate (G). Route the trigger cable (402) parallel with the main gun cable, separating the guide clamp (F) to feed the cable through it. Install and tighten the guide clamp screw (F). Route the cable through the cable guide (K) and to the second gun.
10. Slide the hooked end of the cable (402) through the hole (M) in the gun selector plate (L). Rotate the hook and slide it back until it hooks on the plate. See Fig. 2, DETAIL A.
11. Reconnect the trigger cable to the second at the screw (34). Torque the screw to 15 in-lb (1.7 N•m), and then back it off 1/16 to 1/8 turn and tighten the jam nut (99) while holding the screw (34). Be sure the plate (94) moves freely.
12. Install the clip (401) to hold the cable onto the frame.
13. Connect both trigger cables to the blocks (A). See page 4. Now adjust the cable tension. See page 8.
14. Do not install the spray tip until the system is primed. See your complete LineLazer manual for the startup procedure.

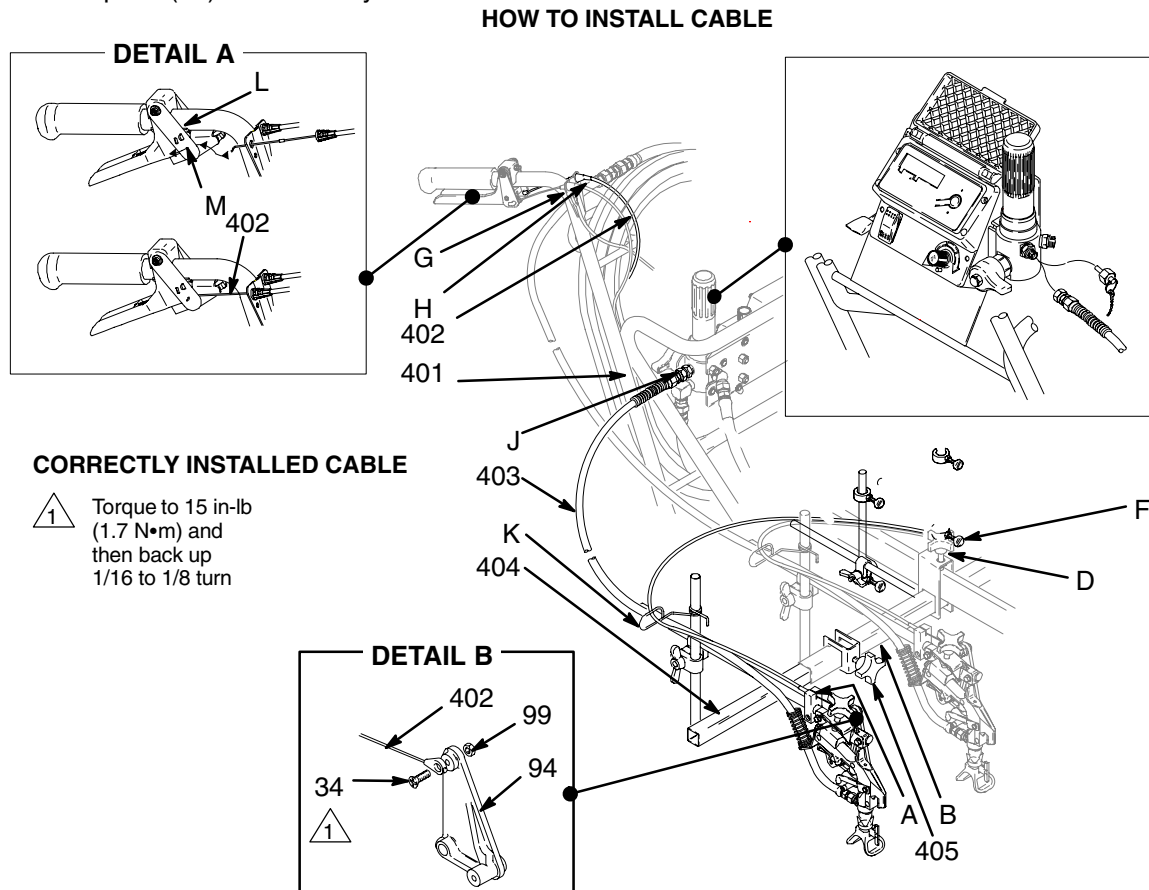


Fig. 2

ti1916a

## Adjust Simultaneous Gun Triggering

### **⚠ WARNING**

To risk the risk of a fluid injection injury, always disengage the trigger cable to the gun(s) before moving or adjusting the guns or gun arms. See page 4.

1. Align the front of the guns by adjusting the gun arms. See page 6.
2. Adjust gun selector plates to operate both guns simultaneously. See page 8.

3. Start the sprayer, using water, or spray on cardboard. Trigger the guns to see if the lines begin at the same time and place.

If one gun triggers before the other gun, reduce the cable tension of the gun that triggers first. See **Trigger cable tension adjustment** on page 8.

If one line starts in front of the other, adjust the position of the guns. See page 6.

Trigger the guns to recheck the adjustments.

# Positioning the Gun Arm Assembly

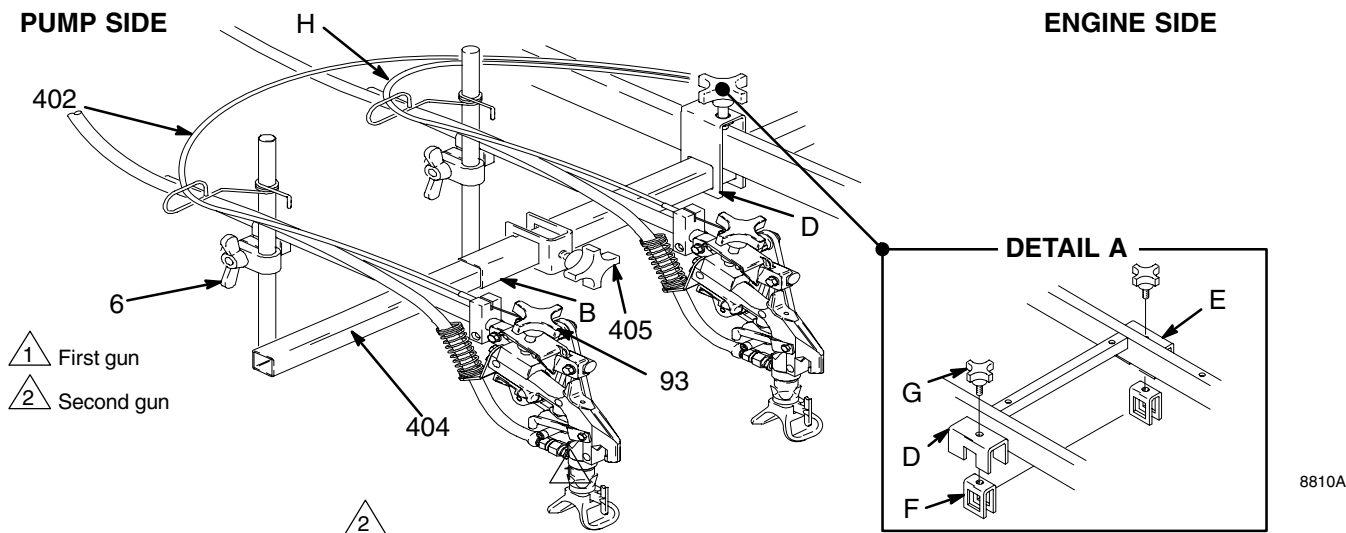


Fig. 3

## Whenever you move the guns

Disengage the cables (402, H) first. See page 4. Do not kink the trigger cables. Pull out more of the 50 ft. (15 m) hose, if necessary.

### **⚠ WARNING**

Do not kink the cables, which could prevent them from properly triggering and untriggering the guns.

After moving the guns, reposition the tip guard so it is parallel to the ground and its "wings" face the front and back of the unit. Disengage the gun trigger safety latch and engage the cable (402, H).

## Vertical position of the first or second gun

Loosen the post/arm clamp (6) and move the gun up or down. Tighten the clamp. Engage the trigger cable.

## Horizontal position of the first gun

**Method 1:** Disengage the cable (H). Loosen the carriage clamps (D) and slide the carriage bar (B) left or right, so the gun will be outside the tire path. Tighten the clamps. Engage the cable (402).

**Method 2:** Disengage the cable (402). Loosen the arm clamp (6) and rotate the gun out to the side. Tighten the bolt. Engage the cable (402).

**NOTE:** Use methods 1 and 2 to obtain the maximum distance of one gun from the unit, which is helpful when spraying around obstacles.

## Horizontal position of the second gun

**Method 1:** Disengage the cable (402). Loosen the clamps (405). Slide the second gun bar (404) horizontally as desired, but be sure both small clamps engage the second gun bar. Tighten the clamps. Engage the cable (402).

**Method 2:** Disengage the cable (402). Loosen the post/arm clamp (6) and rotate the gun out to the side. Tighten the bolt. Engage the cable (402).

**NOTE:** Use methods 1 and 2 together to obtain the maximum distance of 33-1/2" (851 mm) between the center of two guns.

## To mount guns on the engine side of the cart

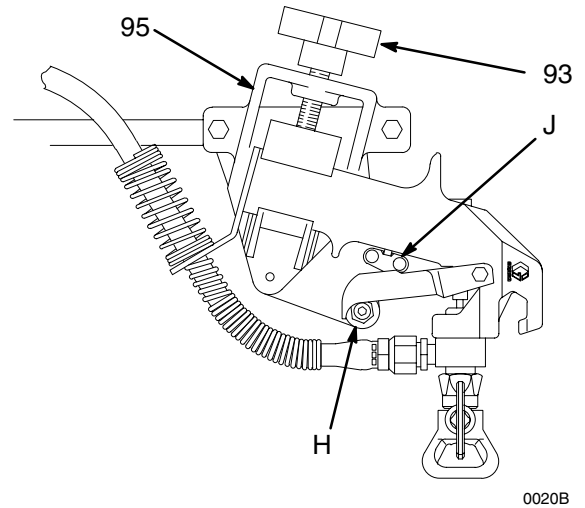
1. For both guns, disengage the cable (402, H) and engage the trigger safety lever. See Fig. 4.
2. Loosen the gun holder knobs (93) and remove the guns. Lay the guns out of the way.
3. Remove the knobs (G) on both carriage clamps (D); The carriage bar (B) and extension clamps (F) will drop down.
4. Lift the front tire and rotate the carriage bar 180° under the cart and to the other side of it.
5. Position the carriage bar below the carriage clamps (D). Align the holes in the top of the extension clamps (F) with the holes in the carriage bar clamps and install the knobs (G). See Fig. 3, DETAIL A.
6. Loosen the post/arm clamps (6) and rotate the gun arms (G) forward. Tighten the clamps.
7. Install the guns. See page 7. Note to which gun and position on the dual gun selector each of the cables (402, H) goes. Route the hoses and cables carefully to prevent kinking. Position the tip guards. Engage the cables (402, H).

# How to Mount the Gun in the Gun Holder

## **WARNING**

To reduce the risk of serious injury whenever you are instructed to relieve pressure, always follow the **Pressure Relief Procedure** on page 2.

1. **Relieve the pressure.**
2. Disengage the trigger cable. See page 4. Disengage the gun's trigger safety lever (J).
3. Loosen the gun holder knob (93).
4. Position the gun so the gun trigger is resting on the remote trigger lever (H).
5. Be sure that the gun is mounted straight and then tighten the knob (93) firmly.
6. Engage the trigger cable. See page 4.



**Fig. 4**

# Trigger Cable and Dual Gun Selector Operation

## ⚠ CAUTION

Always note to which gun and position on gun selector plate each of the cables goes so that the correct gun is triggered.

1. **One gun:** Disconnect left or right gun selector plate (A) from trigger (Fig. 5).
2. **Both guns simultaneously:** Adjust both gun selector plates to same position.
3. **Solid-skip and skip-solid:** Adjust solid-line gun to position 1 & skip-line gun to position 2.

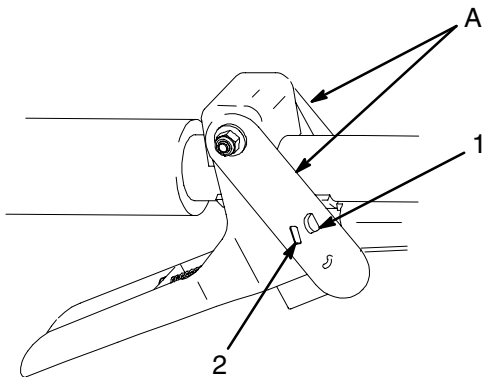


Fig. 5

ti1917a

## ⚠ CAUTION

A loose cable prevents the gun from being fully triggered, which causes premature wear of the gun needle. A tight cable prevents the gun from being fully untriggered, which results in dripping and premature tip wear. Follow the steps at right if adjustment is needed.

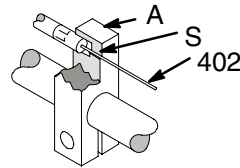
## Trigger cable tension adjustment (Fig. 6)

## ⚠ WARNING

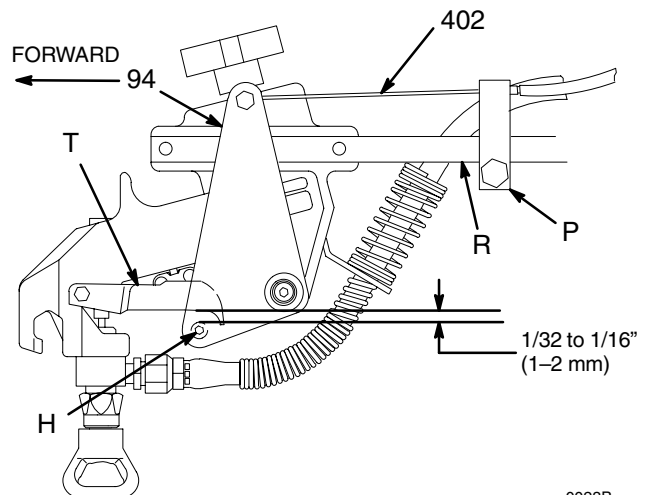
To reduce the risk of serious injury whenever you are instructed to relieve pressure, always follow the **Pressure Relief Procedure** on page 2.

1. **Relieve the pressure.**
2. Mount gun in holder as instructed in Step 4 of **How to Mount the Gun in the Gun Holder**, page 7.
3. Pull actuator lever (94) forward and hold it. Lift up on gun trigger (T) until there is slight resistance. Visually check to see if there is about 1/32 to 1/16 in. (1–2 mm) gap between trigger lever (H) and where gun trigger touches bar.
4. To adjust tension, loosen screw in block (P). Slide block forward to increase gap and backward to decrease gap. Tighten screw.
5. Recheck gap and continue adjusting as needed.

## ⚠ CAUTION



Do not allow cable (402) to rub against edges of slot (S) in block (A), to prevent premature wear of cable. Rotate block slightly to stop rubbing.

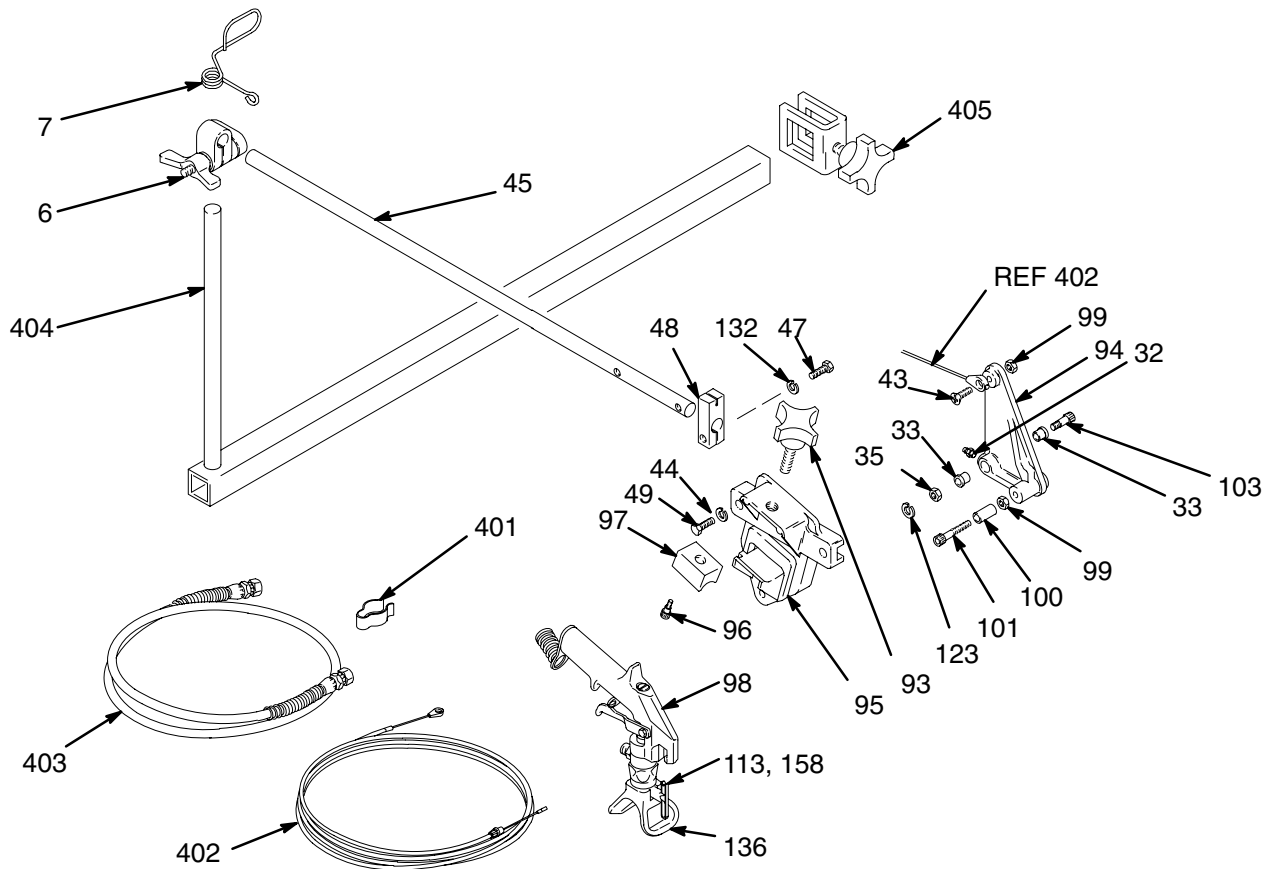


0023B

Fig. 6



## Second Gun Kit Model 245465



8811A

Ref No.	Part No.	Description	Qty.	Ref No.	Part No.	Description	Qty.
6	114029	CLAMP, arm support	1	100*	108535	BEARING, sleeve	1
7	188135	GUIDE, cable	1	101*	107445	CAPSCREW, sch, 1/4–20 x 1–1/2"	1
32*	100846	FITTING, lubrication	1	103*	111045	SCREW, shoulder, sch, 5/16 x 1"	1
33*	111016	BEARING, flanged	2	113	LL5319	LineLazer Tip, Size 319	1
34	111230	SCREW, mach, flhd, 1/4–20 x 1"	1	123*	110755	WASHER	1
35	100015	NUT, hex, 1/4–20	1	132	100133	LOCKWASHER, 3/8"	1
44	100016	LOCKWASHER, 1/4"	2	136	243161	RAC 5 Dripless TIP GUARD	1
45	181734	ARM, support	1	158	286517	SwitchTip, Size 517	1
47	100101	CAPSCREW, hex hd, 3/8–16 x 1"	2	401	178342	CLIP, spring	1
48	186699	BLOCK, mounting cable	1	402	245732	CABLE, remote trigger, color-coded	1
49	100021	CAPSCREW, hex hd, 1/4–20 x 1"	2	403	245798	HOSE, 1/4" ID, cpld 1/4–18 npsm(f)	
93*	181818	KNOB	1			6–1/2' (1.2 m) grounded,	
94*	186747	LEVER, actuator	1			spring guards	1
95*	188452	HOLDER, gun	1	404	224096	BRACKET, support, extension	1
96*	108483	SCREW, shoulder, sch, 1/4 x 3/8"	1	405	224071	CLAMP, extension	2
97*	181795	JAW, clamp	1	* Included in Gun Holder 241001			
98	248157	FLEX GUN					
		<i>See manual 309093 for parts</i>	1	<b>Flex Gun Repair Kit 235474</b>			
99*	101345	NUT, hex, ham, 1/4–20	2	Includes needle, gasket, diffuser/seat			

\* Included in Gun Holder 241001

## Flex Gun Repair Kit 235474

Includes needle, gasket, diffuser/seat

# The Graco Warranty

Graco warrants all equipment listed in this manual which is manufactured by Graco and bearing its name to be free from defects in material and workmanship on the date of sale by an authorized Graco distributor to the original purchaser for use. With the exception of any special extended or limited warranty published by Graco, Graco will, for a period of twelve months from the date of sale, repair or replace any part of the equipment determined by Graco to be defective. This warranty applies only when the equipment is installed, operated and maintained in accordance with Graco's written recommendations.

This warranty does not cover, and Graco shall not be liable for general wear and tear, or any malfunction, damage or wear caused by faulty installation, misapplication, abrasion, corrosion, inadequate or improper maintenance, negligence, accident, tampering, or substitution of non-Graco component parts. Nor shall Graco be liable for malfunction, damage or wear caused by the incompatibility of Graco equipment with structures, accessories, equipment or materials not supplied by Graco, or the improper design, manufacture, installation, operation or maintenance of structures, accessories, equipment or materials not supplied by Graco.

This warranty is conditioned upon the prepaid return of the equipment claimed to be defective to an authorized Graco distributor for verification of the claimed defect. If the claimed defect is verified, Graco will repair or replace free of charge any defective parts. The equipment will be returned to the original purchaser transportation prepaid. If inspection of the equipment does not disclose any defect in material or workmanship, repairs will be made at a reasonable charge, which charges may include the costs of parts, labor, and transportation.

Graco's sole obligation and buyer's sole remedy for any breach of warranty shall be as set forth above. The buyer agrees that no other remedy (including, but not limited to, incidental or consequential damages for lost profits, lost sales, injury to person or property, or any other incidental or consequential loss) shall be available. Any action for breach of warranty must be brought within two (2) years of the date of sale.

**GRACO MAKES NO WARRANTY, AND DISCLAIMS ALL IMPLIED WARRANTIES OF MERCHANTABILITY AND FITNESS FOR A PARTICULAR PURPOSE IN CONNECTION WITH ACCESSORIES, EQUIPMENT, MATERIALS OR COMPONENTS SOLD BUT NOT MANUFACTURED BY GRACO.** These items sold, but not manufactured by Graco (such as electric motors, gas engines, switches, hose, etc.), are subject to the warranty, if any, of their manufacturer. Graco will provide purchaser with reasonable assistance in making any claim for breach of these warranties.

In no event will Graco be liable for indirect, incidental, special or consequential damages resulting from Graco supplying equipment hereunder, or the furnishing, performance, or use of any products or other goods sold hereto, whether due to a breach of contract, breach of warranty, the negligence of Graco, or otherwise.

## **FOR GRACO CANADA CUSTOMERS**

The parties acknowledge that they have required that the present document, as well as all documents, notices and legal proceedings entered into, given or instituted pursuant hereto or relating directly or indirectly hereto, be drawn up in English. Les parties reconnaissent avoir convenu que la rédaction du présente document sera en Anglais, ainsi que tous documents, avis et procédures judiciaires exécutés, donnés ou intentés à la suite de ou en rapport, directement ou indirectement, avec les procédures concernées.

# Graco Phone Number

**TO PLACE AN ORDER**, contact your Graco distributor, or call this number to identify the distributor closest to you:  
**1-800-690-2894 Toll Free.**

*All written and visual data contained in this document reflects the latest product information available at the time of publication.  
Graco reserves the right to make changes at any time without notice.*

**Graco Headquarters:** Minneapolis  
**International Offices:** Belgium, Korea, China, Japan

**GRACO INC. P.O. BOX 1441 MINNEAPOLIS, MN 55440-1441**

PRINTED IN U.S.A. 309416 1/2002, Revised 5/2005