

Trailer Hitch Conversion Kit 245321



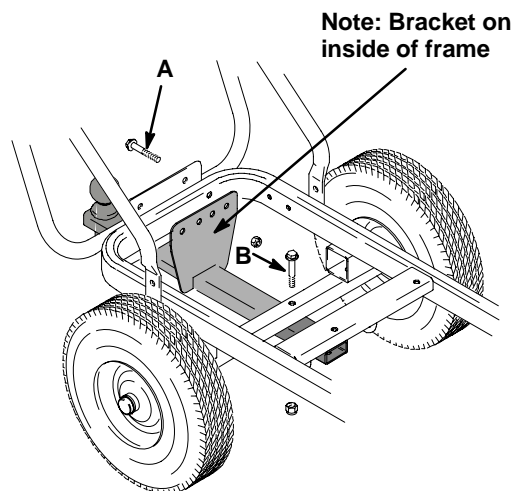
Important Safety Instructions

Read all warnings and instructions in this manual.
Save these instructions.

10 mph (16 kph) Maximum Operating Speed

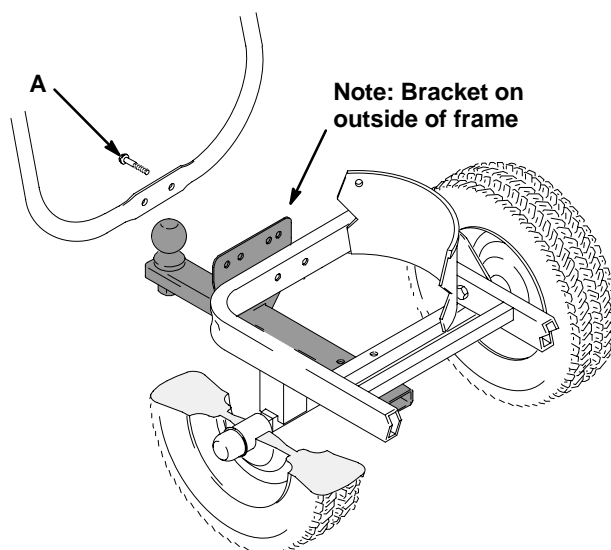
Graco LineLazer 3900, 5900, and 200HS

Remove two bolts (A) in frame of LineLazer.



Graco LineLazer 3500 and 5000

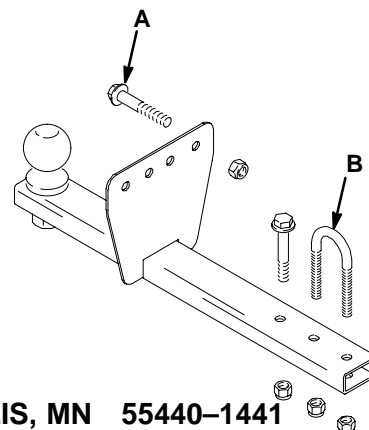
1. Remove brake from striper.
2. Remove two bolts (A) in frame of LineLazer. Drill 3/8 in. holes through hitch receiver, if necessary.
3. Drill 3/8 in. hole in center of axle. Install hitch receiver as shown. Replace two bolts (A) plus third bolt (B) through frame.



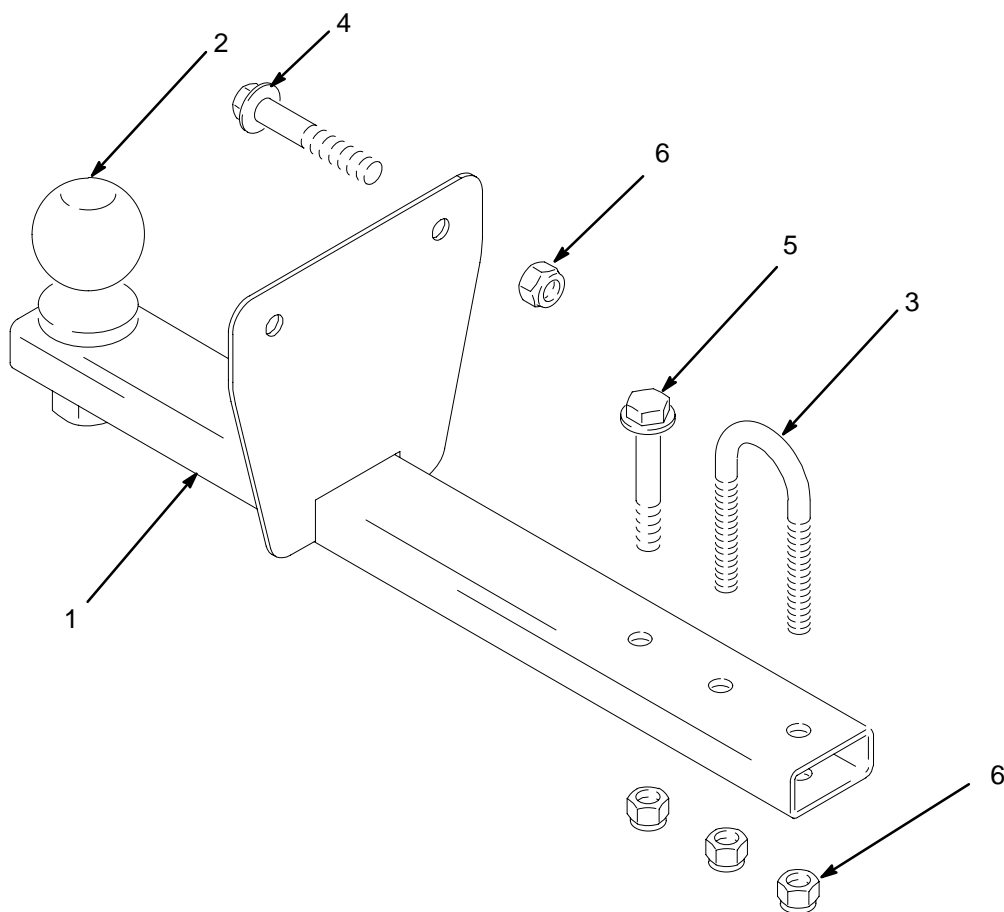
Other Stripers

1. Install hitch receiver similar to LineLazer installation instructions shown.
2. Drill 3/8 in. holes as necessary for installation of bolts (A).
3. Use U-bolt (B) on round axles.
4. Mount hitch level.

Note: Other modifications maybe necessary, depending upon sprayer.



Parts Drawing



ti1673a

Parts List

Ref No.	Part No.	Description	Qty
1	287681	HITCH, LineDriver	1
2	116913	BALL, trailer	1
3	116997	U-BOLT, 3/8-16 Used on line strippers with round axles	1
4	111194	SCREW, cap, flange hd	2
5	116935	SCREW, cap, flange hd	1
6	101566	NUT, lock	5

TO PLACE AN ORDER, contact your Graco distributor, or call **1-800-690-2894** to identify the nearest distributor.

*All written and visual data contained in this document reflect the latest product information available at the time of publication.
Graco reserves the right to make changes at any time without notice.*

MM 309405

Graco Headquarters: Minneapolis
International Offices: Belgium, China, Japan, Korea

GRACO INC. P.O. BOX 1441 MINNEAPOLIS, MN 55440-1441

www.graco.com

10/2001 Rev. 8/2006