



This manual contains important
warnings and information.
READ AND KEEP FOR REFERENCE

INSTRUCTIONS

Medium and Large Size Grips

For PRO™ Xs2, PRO™ Xs3, and PRO™ Xs4 Electrostatic Guns

Part No. 245263 Medium Grip Kit

Part No. 245264 Large Grip Kit

Installation

1. To ensure proper grounding between the grips and the gun handle, clean all paint or dirt off the handle.
2. Place the grips on the handle, noting the left and right orientation. Snap the two sides together.

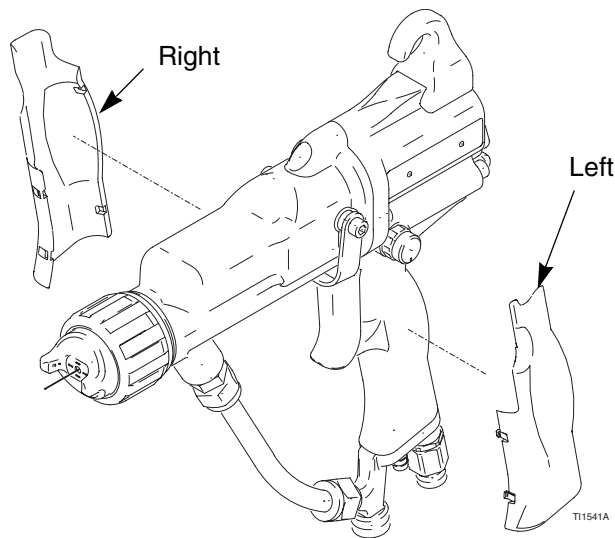


Fig. 1: Assemble the Grips

Test Resistance

Measure the resistance between the air inlet fitting (A) and a point on the grip furthest from the fitting, using a 500V megohmmeter (B). See Fig. 2 on the back of this sheet. The resistance should be less than 1000 ohms.

WARNING

Fire, Explosion, and Electric Shock Hazard



Megohmmeter P/N 241079 (B) is not approved for use in a hazardous area. To reduce the risk of sparking, do not use the megohmmeter to check electrical grounding unless:

- The gun has been removed from the hazardous area;
- Or all spraying devices in the hazardous area are turned off, ventilation fans in the hazardous area are operating, and there are no flammable vapors in the area (such as open solvent containers or fumes from spraying).

Failure to follow this warning could cause fire, explosion, and electric shock and result in serious injury and property damage.

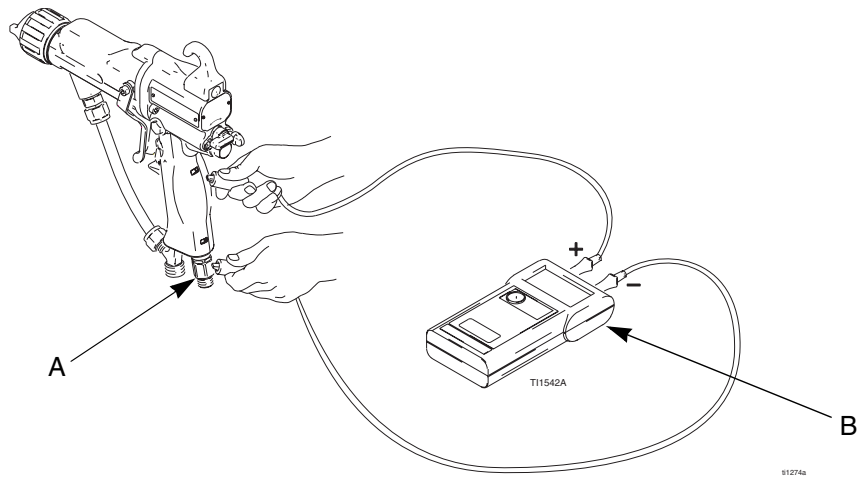


Fig. 2: Test Resistance

Graco Phone Numbers

TO PLACE AN ORDER, contact your Graco distributor, or call one of these numbers to identify the distributor closest to you:

1-800-367-4023 Toll Free

612-623-6921

612-378-3505 Fax

All written and visual data contained in this document reflects the latest product information available at the time of publication. Graco reserves the right to make changes at any time without notice.

Sales Offices: Minneapolis, Detroit

International Offices: Belgium, Korea, Hong Kong, Japan

GRACO INC. P.O. BOX 1441 MINNEAPOLIS, MN 55440-1441

www.graco.com

PRINTED IN USA 309358 09/2001