

INSTRUCTIONS



309370

Rev C



For detailed sprayer information and warnings, see Operating Instructions manual 309225 included with MAGNUM sprayers and 309388 included with 150 RPX Roller and Spray System.

First choice when
quality counts.™

This manual contains kit
installation instructions only.

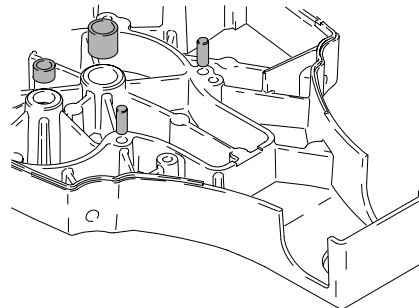
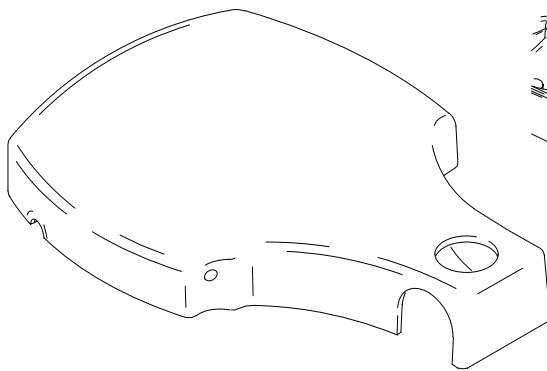
– For portable spray application of architectural paints and coatings –

Cover Kit for

MAGNUM™
by GRACO®

dx Airless Sprayers and 150 RPX Roller and Spray System

Cover Replacement Kit 245147 and 245678



TI1306A

Pressure Relief Procedure

⚠ WARNING



To help prevent injection injuries, follow this procedure when you stop spraying and before you service or clean the sprayer, remove parts, or repair leaks.

1. Turn Power switch OFF. Unplug sprayer.
2. Turn Spray/Prime valve to PRIME to relieve pressure. Turn Pressure Control knob left (counter-clockwise) to minimize pressure.

3. Put trigger safety in SAFETY ON position.

NOTE: Leave Spray/Prime valve in the PRIME position until you are ready to spray again.



9565A

If you suspect that the spray tip or hose is completely clogged or that pressure has not been fully relieved after following the steps above, VERY SLOWLY loosen the tip guard retaining nut or hose end coupling to relieve pressure gradually. Then loosen it completely. Clear the tip or hose obstruction.

GRACO INC. P.O. BOX 1441 MINNEAPOLIS, MN 55440-1441

©COPYRIGHT 2001, GRACO INC.
Graco Inc. is registered to I.S. EN ISO 9001

Cover Replacement Kit 245147 and 245678

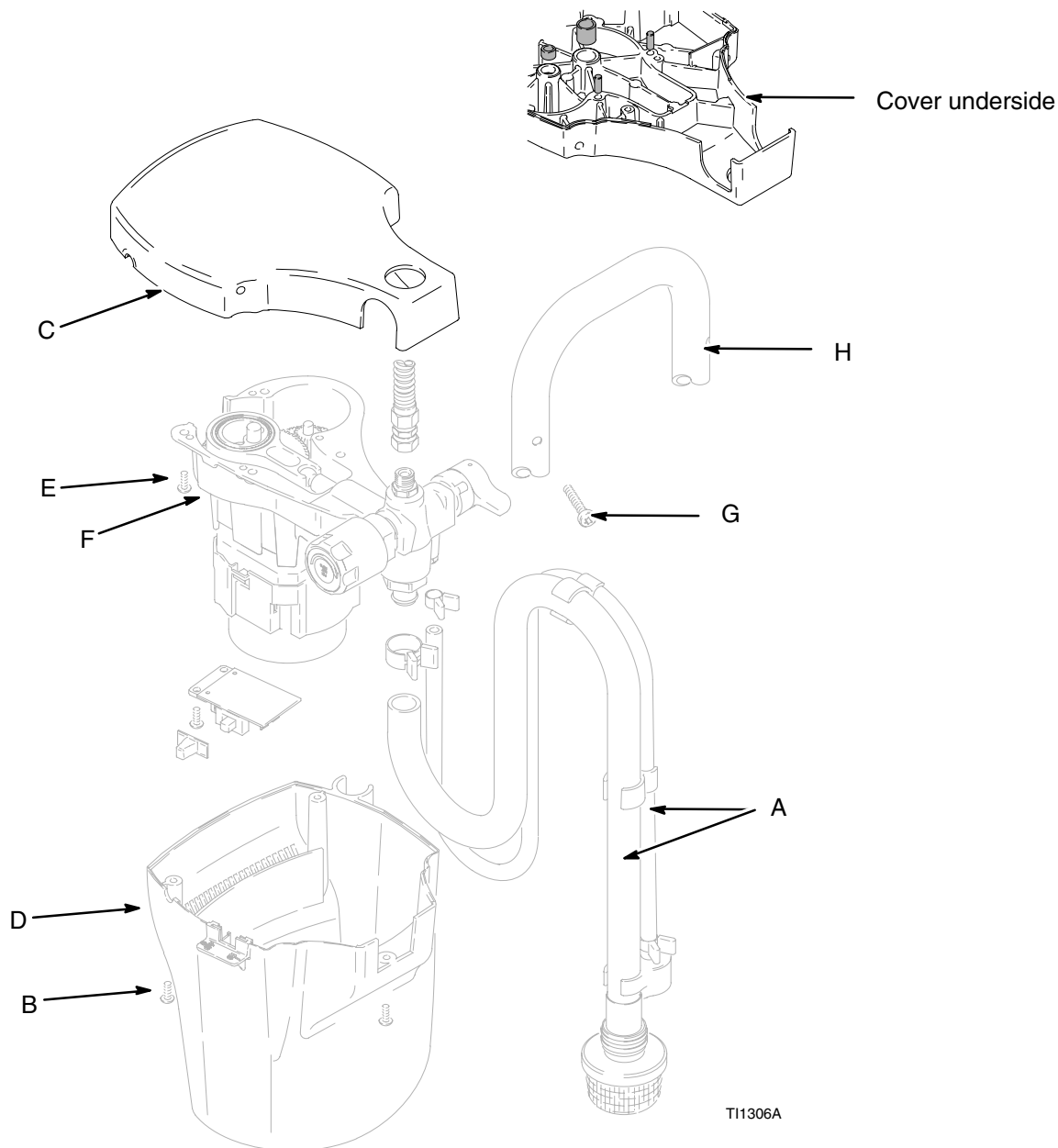


Fig. 1

Disassembly

1. Unplug electrical cord.
2. **Relieve Pressure** by following the procedure described on page 1, or see the Operating Instructions manual 309225.

3. Remove all hoses (A).

Tip unit on its side.

4. Remove screws (B) with a T-20 torx or 3/16" slot screwdriver. Separate enclosure (D) and cover (C).

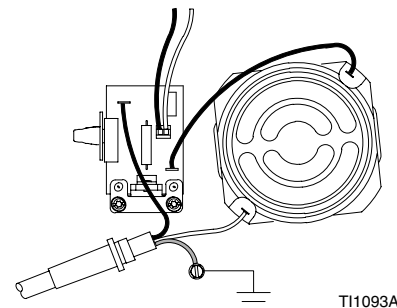


Fig. 2

5. Remove both motor leads and pressure control switch connections (Fig. 2).
6. Remove 4 screws (E) holding cover (C) to pump housing (F).

Tip unit forward carefully. Make sure the gears do not fall out.

7. Separate the cover and pump housing (C and F).
8. Remove four screws (G) holding cover (C) to frame (H).

Assembly

1. Put new cover (C) and frame (H) together. Replace screws (G). Torque screws to 70–80 in-pounds (7.91–9.04 N•m).
2. Put new cover (C) and pump housing (F) together. Replace screws (E). Torque screws to 25–35 in-pounds (2.83–3.96 N•m).
3. Connect both motor leads (Fig. 2). One lead goes to the control board; the other goes to the power cord.
4. Replace motor enclosure (D).
5. Replace and tighten screws (B).
6. Reconnect hoses (A).
7. Apply new warning label. Fig. 1.

*All written and visual data contained in this document reflects the latest product information available at the time of publication.
Graco reserves the right to make changes at any time without notice.*

Sales Offices: Minneapolis

International Offices: Belgium, Korea, Hong Kong, Japan

GRACO INC. P.O. BOX 1441 MINNEAPOLIS, MN 55440-1441

www.graco.com

PRINTED IN USA 309370, May 2001, Revised December 2004