

INSTRUCTIONS



309328

Rev C



For detailed sprayer information and warnings, see Operating Instructions manual 309225 included with MAGNUM sprayers and 309388 included with 150 RPX Roller and Spray System.

First choice when
quality counts.™

This manual contains kit
installation instructions only.

Motor Kit for **MAGNUM™** dx Airless Sprayers and RPX 150 Roller and Spray System

Motor Kit: 245080, 245646, 245987

Pressure Relief Procedure

⚠ WARNING



To help prevent injection injuries, follow this procedure when you stop spraying and before you service or clean the sprayer, remove parts, or repair leaks.

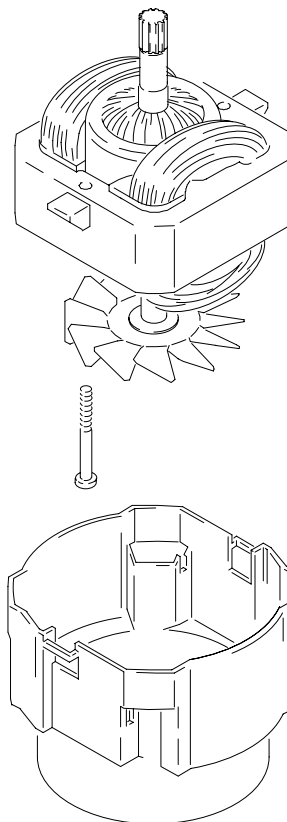
1. Turn Power switch OFF. Unplug sprayer.
2. Turn Spray/Prime valve to PRIME to relieve pressure. Turn Pressure Control knob left (counter clockwise) to minimize pressure.
3. Put trigger safety in SAFETY ON position.

NOTE: Leave Spray/Prime valve in the PRIME position until you are ready to spray again.



9565A

If you suspect that the spray tip or hose is completely clogged or that pressure has not been fully relieved after following the steps above, VERY SLOWLY loosen the tip guard retaining nut or hose end coupling to relieve pressure gradually. Then loosen it completely. Clear the tip or hose obstruction.



ti1094A

GRACO INC. P.O. BOX 1441 MINNEAPOLIS, MN 55440-1441

©COPYRIGHT 2001, GRACO INC.

Graco Inc. is registered to I.S. EN ISO 9001

Motor Kit

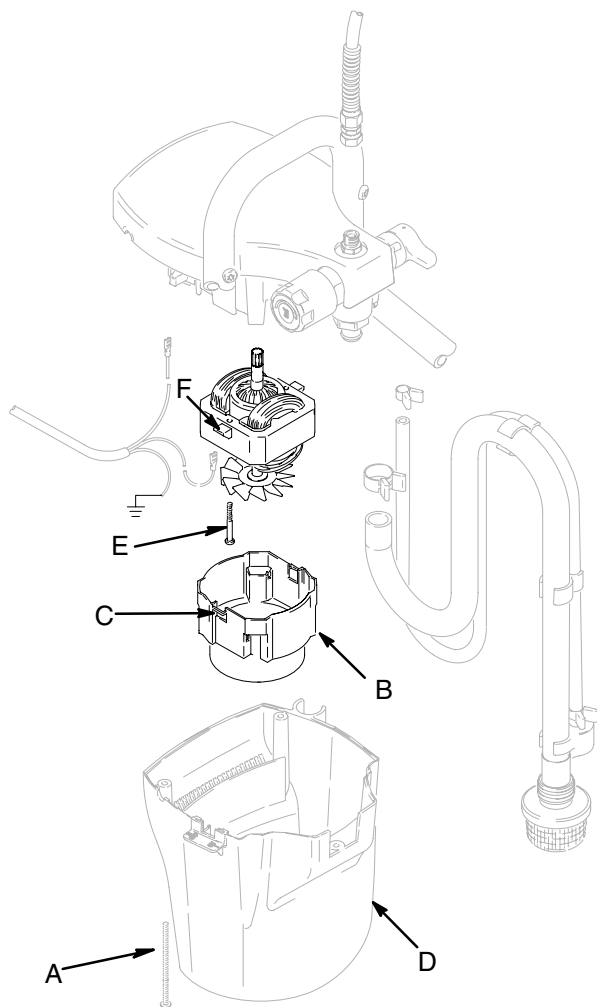


Fig. 1

ti1094A

⚠ WARNING

ELECTRIC SHOCK HAZARD MOVING PARTS HAZARD

To reduce risk of serious injury, including electric shock, do not touch moving or electrical parts with fingers or tools while testing repair. Unplug sprayer when power is not required for testing. Install all covers, gaskets, screws, and washers before you operate sprayer.

Disassembly (Fig. 1)

1. Unplug electrical cord.

2. **Relieve Pressure** by following the procedure described on page 1, or see the Operating Instructions manual 309225 or 309388.
3. Tip the unit on its back.
4. Remove 3 motor enclosure screws (A) using a T-20 torx or straight blade screw driver.
5. Remove the shroud (D).
6. Disconnect motor harness and WHITE electrical cord leads from control board.
7. Remove the fan cover (B) by gently using a straight blade screw driver to release the clips (C) on each side.

NOTE: It will be easier to perform this procedure if you remove suction and drain hoses from the unit.

8. Remove the 2 motor screws (E) using a T-20 torx or straight blade screw driver.

Assembly (Fig. 1)

1. Place new motor in pump housing. Rotate fan slightly to engage teeth.
2. Replace 2 screws (E). Torque to 15–20 in-lbs (1.69–2.26 N•m).
3. Replace fan cover (B), making sure clips (C) line up with notches (F) on motor and snap into place securely.

NOTE: Carefully feed one lead wire through the corner opening on the cover. The other lead wire should be at the opposite corner.

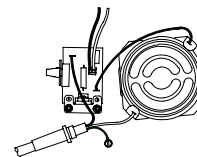


Fig. 2

4. Connect motor harness and WHITE electrical cord leads on control board. (Fig. 2).
5. Replace cover and screws.

All written and visual data contained in this document reflects the latest product information available at the time of publication. Graco reserves the right to make changes at any time without notice.

Sales Offices: Minneapolis, Detroit
International Offices: Belgium, Korea, Hong Kong, Japan

GRACO INC. P.O. BOX 1441 MINNEAPOLIS, MN 55440-1441

www.graco.com

PRINTED IN USA 309328 April 2001, Revised September 2004