

INSTRUCTIONS



309326

Rev E



INSTRUCTIONS

For detailed sprayer information and warnings, see Operating Instructions manual 309225 (included with MAGNUM sprayers).

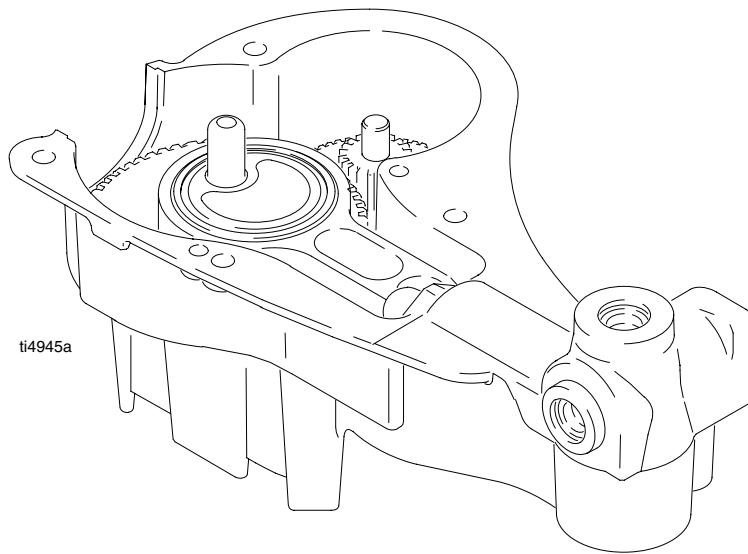
First choice when
quality counts.™

This manual contains kit
installation instructions only.

Pump Kit for 150 RPX and **MAGNUM™** dx Airless Sprayers

by GRACO

Pump Replacement Kit 245078



Pressure Relief Procedure

⚠ WARNING



psi/MPa/bar

To help prevent injection injuries, follow this procedure when you stop spraying and before you service or clean the sprayer, remove parts, or repair leaks.

1. Turn Power switch OFF. Unplug sprayer.
2. Turn Spray/Prime valve to PRIME to relieve pressure. Turn Pressure Control knob left (counter-clockwise) to minimize pressure.

3. Put trigger safety in SAFETY ON position.

NOTE: Leave Spray/Prime valve in the PRIME position until you are ready to spray again.



9565A

If you suspect that the spray tip or hose is completely clogged or that pressure has not been fully relieved after following the steps above, VERY SLOWLY loosen the tip guard retaining nut or hose end coupling to relieve pressure gradually. Then loosen it completely. Clear the tip or hose obstruction.

GRACO INC. P.O. BOX 1441 MINNEAPOLIS, MN 55440-1441

©COPYRIGHT 2001, GRACO INC.
Graco Inc. is registered to I.S. EN ISO 9001

Pump Replacement Kit 245078

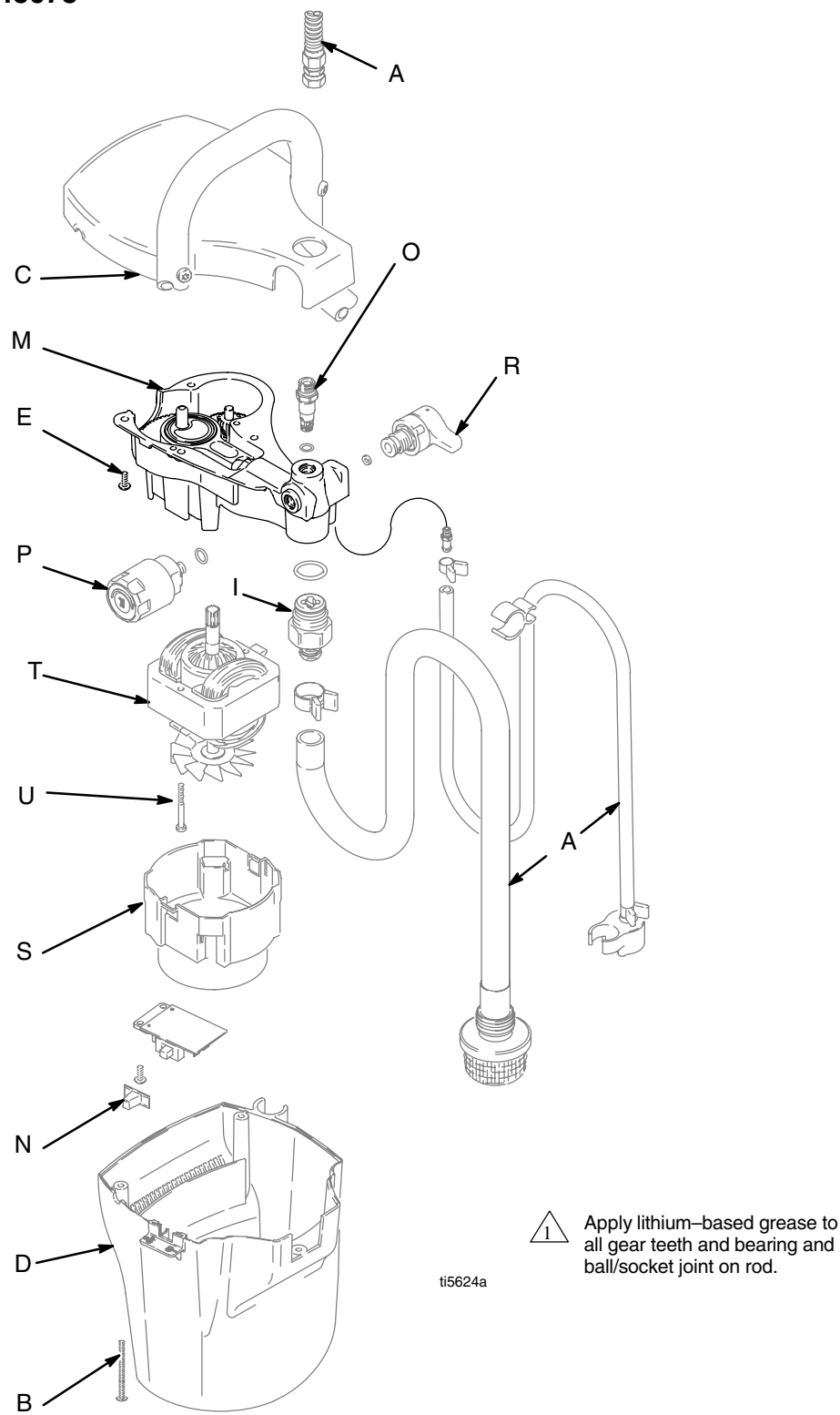


Fig. 1

Disassembly

1. Unplug electrical cord.
2. **Relieve Pressure** by following the procedure described on page 1, or see the Operating Instructions manual 309225.
3. Remove all hoses (A).
4. Remove and save inlet (I), outlet (O) and prime (R) valves.
5. Remove and save screws (B) from enclosure (D). Separate enclosure from cover (C).

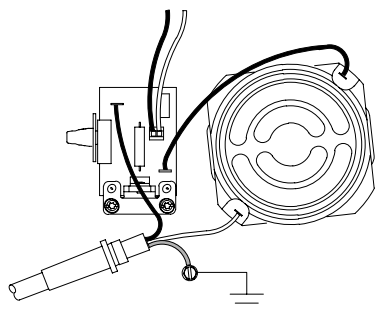


Fig. 2

6. Remove both motor leads and pressure control switch connections (Fig. 2). Remove gray shroud (S) from motor (T) and save.
7. Remove and save pressure control (P).

8. Remove and save 2 screws (U) holding motor (T) to pump housing (M). Remove and save motor.
9. Remove 4 screws (E) holding cover (C) to pump housing (M). Separate cover and pump housing.
10. Discard pump housing (M) with pump assembly, combination gear, large gear and connecting rod.

Assembly

1. Assemble cover (C) to pump housing (M) using 4 screws (E). Torque to 30 in-lbs.
2. Assemble motor (T) to pump housing (M) using 2 screws (U). Torque to 25 in-lbs.
3. Assemble pressure control (P) to pump housing (M). Apply 1 drop sealant to threads. Torque to 150 in-lbs.
4. Assemble gray shroud (S) to motor. Attach motor leads and pressure control switch connections to control board.
5. Attach enclosure (D) to cover (C). Make sure slider (N) is correctly positioned and moves freely in enclosure.
6. Assemble inlet (I) (350 in-lbs), outlet (O) (350 in-lbs), and prime (R) (185 in-lbs) valves to pump housing (M).
7. Reconnect hoses (A) to sprayer.

*All written and visual data contained in this document reflects the latest product information available at the time of publication.
Graco reserves the right to make changes at any time without notice.*

Sales Office: Minneapolis
International Offices: Belgium, Korea, Hong Kong, Japan

GRACO INC. P.O. BOX 1441 MINNEAPOLIS, MN 55440-1441

www.graco.com

PRINTED IN USA 309326, April 2001, Revised September 2004