



INSTRUCTIONS

This manual contains important warnings and information.  
**READ AND KEEP FOR REFERENCE.**

First choice when  
quality counts.™

## Frame, Roller

*3600 psi (24.8 MPa, 248 bar) Maximum Working Pressure\**

\*The best operating pressure is the lowest pressure that provides an even paint supply to the roller and typically does not exceed 300 psi (2.1 MPa, 21 bar).

### Model 244271, Series C

- 9 in. (22.9 cm) length
- 7/8" inlet with 1/2" roller cover

### Model 244623, Series C

- 9 in. (22.9 cm) length
- 1/8" inlet with 1/2" roller cover

### Pressure Relief Procedure



#### WARNING

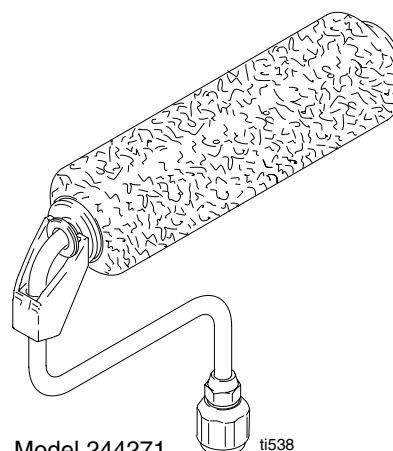


psi/MPa/bar

To help prevent injection injuries,  
follow this procedure whenever  
you stop painting.

1. Put gun trigger safety in SAFETY ON position.
2. Shut off power to pump.
3. Turn prime/spray valve to the PRIME position to relieve pressure in system.
4. Put gun trigger safety in SAFETY OFF position, and trigger gun to relieve any pressure in hose.
5. Put gun trigger safety in SAFETY ON position, and keep pump prime/spray valve in PRIME position until you paint again.

*If you suspect that the frame or hose is completely clogged or that pressure has not been fully relieved after following the steps above, VERY SLOWLY loosen the tip retaining nut or hose end coupling and relieve pressure gradually, then loosen completely. Now clear the frame or hose obstruction.*



Model 244271 ti538

## ! WARNING

### EQUIPMENT MISUSE HAZARD

Misuse can cause the equipment to rupture or malfunction and result in serious injury.

#### To help prevent injury

- Do not modify the extension tube or roller frame or use parts not designed for this equipment.
- Do not use 1,1,1-trichloroethane, methylene chloride, other halogenated hydrocarbon solvents or fluids containing such solvents in this or any other pressurized aluminum equipment. Such use could result in a chemical reaction, with the possibility of explosion.



### INSTRUCTIONS

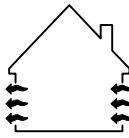


### FIRE AND EXPLOSION HAZARD

Improper grounding, poor ventilation, open flames or sparks can cause a hazardous condition and result in a fire or explosion and serious injury.

#### To help prevent injury from fire or explosion

- Provide fresh air ventilation to avoid the buildup of flammable fumes from flushing fluids or the coating being applied.
- Keep the application area free of debris, including solvent, rags, and gasoline.



### FLUID INJECTION HAZARD

If high-pressure fluid pierces your skin, the injury might look like "just a cut". But it is a serious wound. Get immediate medical attention.

#### To help prevent injection

- Keep your hands and body away from the roller frame when flushing. High pressure fluid emitted from the holes in the frame could cause an injection injury.
- Always relieve pressure before you check or repair leaks and when you turn off pump or stop painting.
- Never use components rated less than system *Maximum Working Pressure*.



### ELECTROCUTION HAZARD

Failure to observe the electrical hazards described below could result in serious injury, including burns or electrocution.

#### To help prevent harmful electrical shock

- Avoid contact with power lines.
- Follow all grounding instructions in your separate pump and gun instruction manual, and comply with all local, state, and national fire, electrical, and safety regulations.
- Use only Graco paint hoses.



## Installation

## ! WARNING

Refer to your sprayer and spray gun manuals for appropriate warnings and instructions for safe operation of this roller frame.

Gasket (12) must be in place before installing frame (1). If gasket is not in place there is a potential injection hazard which could result in serious injury.

- Follow **Pressure Relief Procedure** on page 1.
- Prime pump.
- Install roller frame.

## Cleaning

This is the procedure for flushing the pressure roller. The pump and gun you are using may have additional flushing steps, such as cleaning filters and screens. See the pump and gun flushing instructions.

**NOTE:** Leave the pressure roller attached to the gun for this procedure.



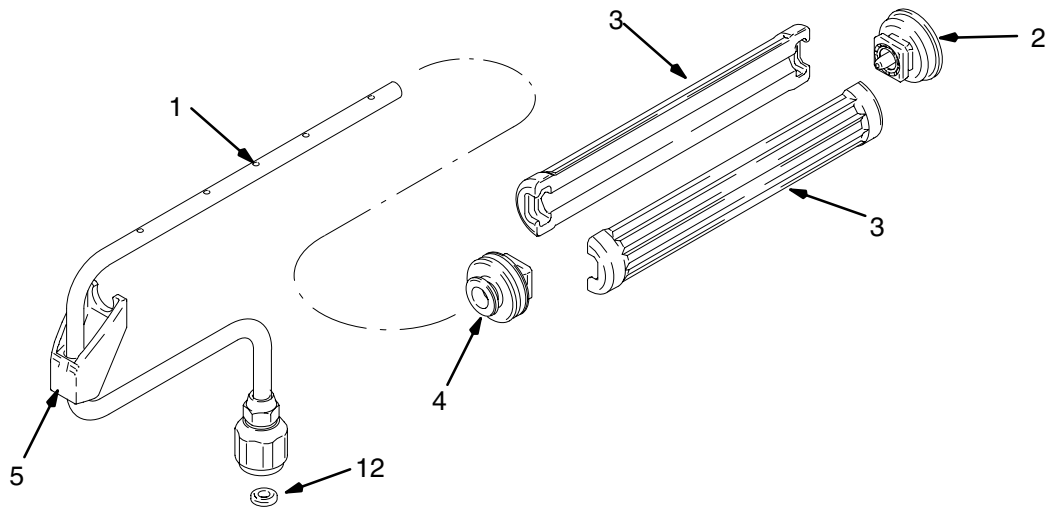
See **Pressure Relief Procedure** on page 1.

- Relieve the pressure.**
- Remove roller cover and diffuser (3) from roller frame (1) as follows (see **Parts Drawing**):
  - Using your thumb, press down on clip (5) to release end caps (2 & 4), diffuser (3) and roller cover into a pail.
  - Remove roller cover from diffuser (3).
  - Pull end caps (2 & 4) off diffuser (3).
- Clean roller cover, caps (2 & 4) and diffuser (3) with water or a compatible fluid for oil-based materials.
- Place roller frame (1) in paint pail. Be sure the holes in roller frame (1) are facing inside the paint pail.
- Prime pump with water or flushing fluid for oil-based materials. Use the lowest pump priming pressure setting.
- Turn prime/spray valve to **SPRAY**.

**NOTE:** Perform Step 7 at the lowest pressure possible.

- Trigger gun until flushing fluid begins to dilute the paint.
- Place roller frame (1) in another bucket and continue flushing until fluid coming out of the roller frame (1) is clear.
- Shut off the pump. Turn prime/spray valve to **PRIME**.

# Parts



Ref No.	Part No.	Description	Qty
1		FRAME, roller	1
2	245999	CAP, end	1
3	15B065	DIFFUSER, roller	2
4	246277	CAP, end (includes seal, retainer and o-ring)	1
5	197106	CLIP, roller	1
12	115524	GASKET	1

**Wetted Parts:** Viton®, nylon, plated steel, Delrin®, polyethylene, stainless steel

**NOTE:** Delrin® and Viton® are registered trademarks of the DuPont Co.

## Roller Covers

107589	9 in X 3/8 in
107590	9 in X 1/2 in
107591	9 in X 3/4 in
107592	9 in X 1-1/4 in

*All written and visual data contained in this document reflects the latest product information available at the time of publication.  
Graco reserves the right to make changes at any time without notice.*

**Sales Offices:** Minneapolis, Detroit  
**International Offices:** Belgium, Korea, Hong Kong, Japan

**GRACO INC. P.O. BOX 1441 MINNEAPOLIS, MN 55440-1441**  
**[www.graco.com](http://www.graco.com)**

PRINTED IN U.S.A. 309322, August 2001, Revised October 2002