

Instructions



Cleanshot™ Shut-Off Valve

309314 rev.D



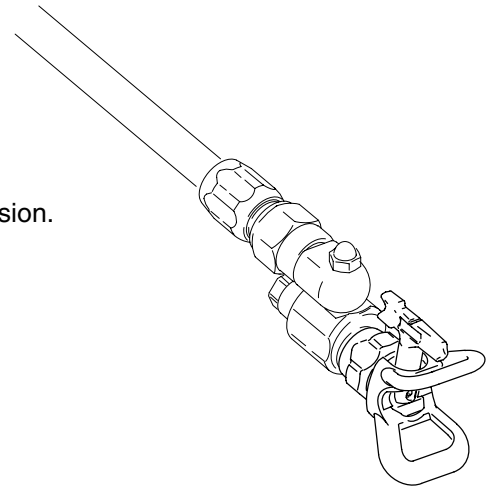
Important Safety Instructions

Read all warnings and instructions in this manual. Save these instructions.

Model 244160

3600 psi (248 bar) Maximum Working Pressure

For use on any Graco high pressure airless gun or extension.
Includes RAC5 517 SwitchTip™ and HandTite™ guard.



PROVEN QUALITY. LEADING TECHNOLOGY.

WARNING

HIGH PRESSURE SPRAY CAN CAUSE SERIOUS INJURY. FOR PROFESSIONAL USE ONLY. OBSERVE ALL WARNINGS.



Read and understand all instruction manuals before operating the equipment.

Skin Injection Hazard

This adapter conducts very high fluid pressure. Spray from the gun, leaks or ruptured components can inject fluid through your skin and into your body, and cause extremely serious injury, including the need for amputation. Also, fluid injected or splashed into the eyes or on the skin can cause serious damage.

NEVER point the spray gun at any one or at any part of the body. NEVER put your hand or fingers over the spray tip. NEVER try to “blow back” paint; this is NOT an air spray system.

ALWAYS have the tip guard in place on the spray gun or adapter when spraying.

ALWAYS follow the **PRESSURE RELIEF PROCEDURE**, right, before cleaning or removing the spray tip or servicing any system equipment.

NEVER try to stop or deflect leaks with your hand or body.

Always wear protective eyewear, gloves, clothing and respirator as recommended by the fluid and solvent manufacturer.



Medical Alert—Airless Spray Wounds

If any fluid appears to penetrate your skin, get **immediate surgical treatment. DO NOT TREAT AS A SIMPLE CUT.** Tell the doctor exactly what fluid was injected.

Note to Physician: Injection in the skin is a traumatic injury. It is important to treat the injury surgically as soon as possible. Do not delay treatment to research toxicity. Toxicity is a concern with some exotic coatings injected directly into the blood stream. Consultation with a plastic surgeon or reconstructive hand surgeon may be advisable.

System Pressure

This adapter has a 3600 psi (248 bar) **MAXIMUM WORKING PRESSURE**. DO NOT exceed the maximum working pressure of this adapter or any other component used in the system.

Pressure Relief Procedure

To reduce risk of serious injury, including fluid injection, splashing material on the eyes or skin, or injury from moving parts or electric shock, follow this procedure when shutting off the pump, when checking or servicing any part of the spray system, when installing, cleaning or changing spray tips, and whenever you stop spraying.

1. Put in-line valve trigger safety lever in SAFETY ON position.
2. Shut off pump or sprayer, disconnect its power source, and open all air bleed valves.
3. Put in-line valve trigger safety lever in SAFETY OFF position.
4. Rotate spray valve knob counter-clockwise to FLUSH position.
5. Hold a metal part of the gun firmly to the side of a grounded metal pail, and trigger the gun into the paint pail to relieve pressure.
6. Engage the gun safety latch.
7. Open pump drain valve to relieve fluid pressure in pump, hose, and pole gun. Triggering in-line valve to relieve pressure may not be sufficient. Have container ready to catch drainage.

If you suspect that the spray tip or hose is completely clogged, or that pressure has not been fully relieved after following the steps above, very slowly loosen the part to relieve pressure gradually, then loosen completely.

Fluid and Solvent Compatibility

Do not use 1,1,1-trichloroethane, methylene chloride, other halogenated hydrocarbon solvents or fluids containing such solvents in this equipment, which contains aluminum and/or zinc parts. Such use could result in a serious chemical reaction, with the possibility of explosion, which could cause death, serious bodily injury and/or substantial property damage.

Equipment Misuse

Equipment misuse, such as over pressurizing, modifying parts, using incompatible chemicals and fluids, or using worn or damaged parts, can cause them to rupture and result in fluid injection, splashing on the eyes or the skin, or other serious injury, or fire, explosion or property damage.

INSTALLATION

WARNING

To reduce the risk of serious bodily injury from fluid injection or splashing in the eyes or on the skin, stop using the nozzle immediately if it starts to leak or cannot be turned easily.

CAUTION

To avoid damage to the o-ring in the swivel:

- Relieve fluid pressure before rotating the swivel.
- Do not soak the entire swivel in solvent.

Installing the Tip and Guard (Fig. 1 and Fig. 2)

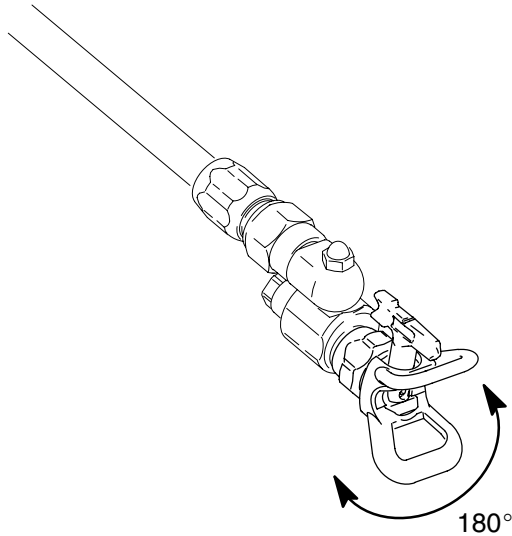


Fig. 1

Flush and Spray

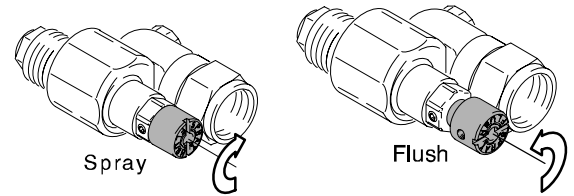


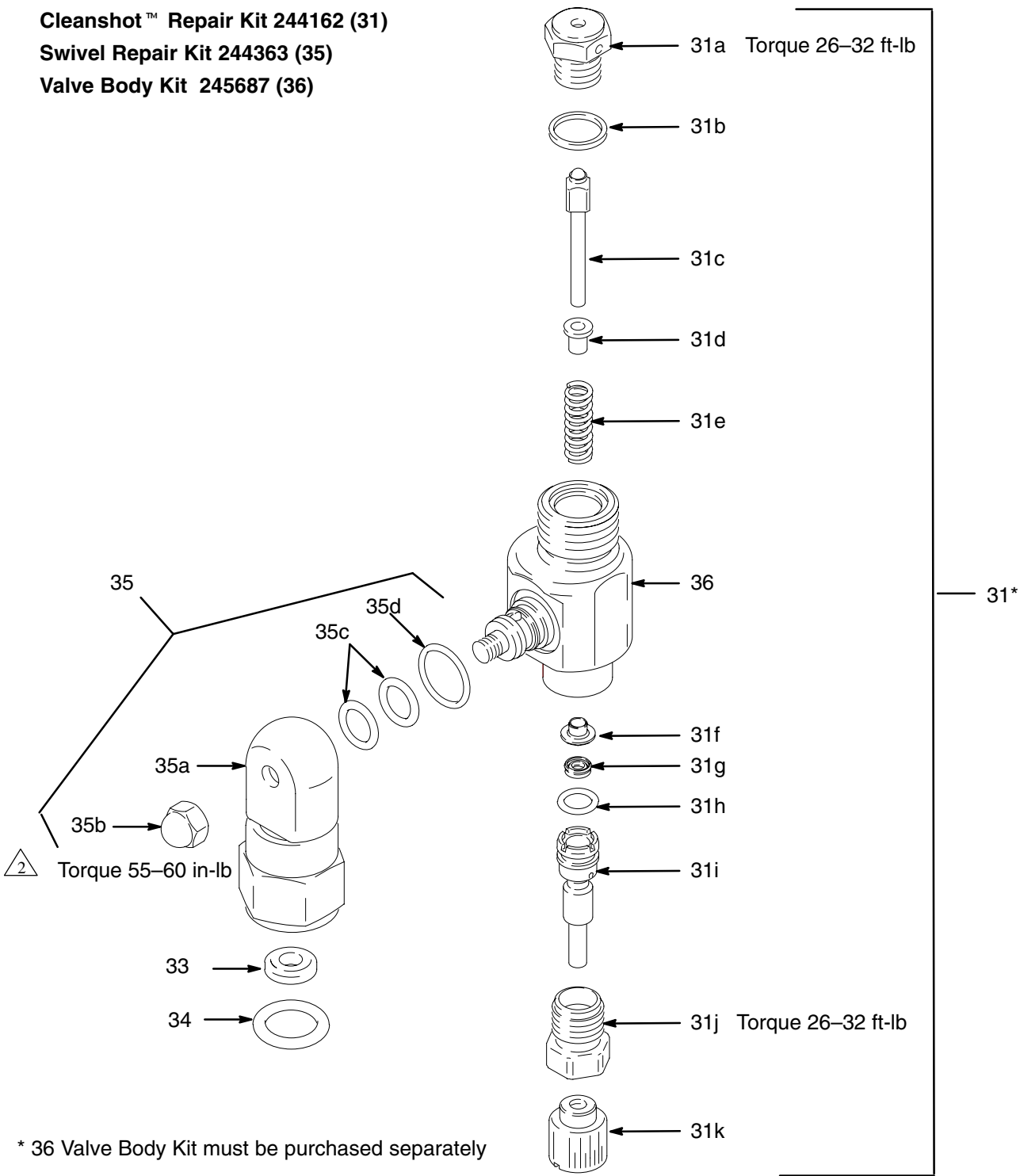
Fig. 2

The Cleanshot™ Shut-Off Valve provides two settings: SPRAY and FLUSH. The valve is factory set to the SPRAY position for spraying at pressures above 700 psi (4.8 MPa, 48 bar). Turn the valve (override) to the FLUSH position for flushing, cleaning, priming and relieving pressure. FLUSH is also used for low pressure spraying applications below 1000 psi (6.9 MPa, 69 bar).

1. Without the spray tip installed, start sprayer, turn the knob on the Cleanshot™ Shut-off Valve counter-clockwise to the FLUSH position. (Fig. 2)
2. Flush and prime the spray system.
3. Follow the **Pressure Relief Procedure** described on the front cover of this manual.
4. Install the spray tip.
5. Turn the knob on the Cleanshot™ Shut-off Valve to SPRAY. (Fig. 2)
6. Rotate the Cleanshot™ valve to any desired position within 180°. Do not use any tools.
7. Refer to your separate gun instruction manual for operating and tip cleaning instructions.
8. This adapter is repairable.

Parts

Cleanshot™ Repair Kit 244162 (31)
Swivel Repair Kit 244363 (35)
Valve Body Kit 245687 (36)



* 36 Valve Body Kit must be purchased separately

ti0947

Parts List

Ref. No.	Part No.	Description	Qty.		
31	244162	KIT, Cleanshot™ repair includes parts 31a–31k	1	36	KIT, valve body 1
31a		SEAT, valve	1	36a	STUD, manifold 1
31b		GASKET	1	36b	GASKET, nylon 1
31c		RETAINER, ball	1	36c	VALVE, outlet 1
31d		DAMPENER, spring	1		
31e		SPRING, compression	1		
31f		GUIDE, spring	1		
31g		SEAL, u-cup	1		
31h		PACKING, o-ring	1		
31i		RETAINER, u-cup	1		
31j		CAP, end, u-cup	1		
31k		KNOB, valve	1		
33	162863	GASKET, non-metallic	2		
34	120190	PACKING, o-ring	2		
35	244363	KIT, swivel repair	1		
35a	244663	SWIVEL, inlet assembly	1		
35b	120189	NUT, cap	1		
35c	107505	PACKING, o-ring	2		
35d	109576	PACKING, o-ring	1		

TECHNICAL DATA

Wetted parts Aluminum, Tungsten Carbide, PTFE,
Stainless Steel
Fluid inlet/outlet 7/8–14 UNF
Maximum working pressure 3600 psi (25 MPa, 248 bar)

TO PLACE AN ORDER, contact your Graco distributor, or call this number to identify the distributor closest to you: **1-800-690-2894 Toll Free**

THE GRACO WARRANTY AND DISCLAIMERS

WARRANTY

Graco warrants all equipment manufactured by it and bearing its name to be free from defects in material and workmanship on the date of sale to the original purchaser for use. As purchaser's sole remedy for breach of this warranty, Graco will, for a period of twelve months from the date of sale, repair or replace any part of the equipment proven defective. This warranty applies only when the equipment is installed, operated and maintained in accordance with Graco's written recommendations.

This warranty does not cover, and Graco shall not be liable for, any malfunction, damage or wear caused by faulty installation, misapplication, abrasion, corrosion, inadequate or improper maintenance, negligence, accident, tampering, or substitution of non-Graco component parts. Nor shall Graco be liable for malfunction, damage or wear caused by the incompatibility with Graco equipment of structures, accessories, equipment or materials not supplied by Graco, or the improper design, manufacture, installation, operation or maintenance of structures, accessories, equipment or materials not supplied by Graco.

This warranty is conditioned upon the prepaid return of the equipment claimed to be defective to an authorized Graco distributor for verification of the claim. If the claimed defect is verified, Graco will repair or replace free of charge any defective parts. The equipment will be returned to the original purchaser transportation prepaid. If inspection of the equipment does not disclose any defect in material or workmanship, repairs will be made at a reasonable charge, which charges may include the costs of parts, labor and transportation.

DISCLAIMERS AND LIMITATIONS

The terms of this warranty constitute purchaser's sole and exclusive remedy and are in lieu of any other warranties (express or implied), **including warranty of merchantability or warranty of fitness for a particular purpose**, and of any non-contractual liabilities, including product liabilities, based on negligence or strict liability. Every form of liability for direct, special or consequential damages or loss is expressly excluded and denied. In no case shall Graco's liability exceed the amount of the purchase price. Any action for breach of warranty must be brought within two (2) years of the date of sale.

EQUIPMENT NOT COVERED BY GRACO WARRANTY

Graco makes no warranty, and disclaims all implied **warranties of merchantability and fitness for a particular purpose**, with respect to accessories, equipment, materials, or components sold but not manufactured by Graco. These items sold, but not manufactured by Graco (such as electric motor, switches, hose, etc.) are subject to the warranty, if any, of their manufacturer. Graco will provide purchaser with reasonable assistance in making any claim for breach of these warranties.

All written and visual data contained in this document reflect the latest product information available at the time of publication.

Graco reserves the right to make changes at any time without notice.

mm 309314

This manual contains English

Graco Headquarters: Minneapolis

International Offices: Belgium, Korea, China, Japan

GRACO INC. P.O. BOX 1441 MINNEAPOLIS, MN 55440-1441

www.graco.com

PRINTED IN U.S.A. February 2001, Revised 11/2005