

Instructions – Parts List



COMPRESSOR BASED

309245 rev.N

HVLP–COMP Spray System

135 psi (0.93 MPa, 9.3 bar) Maximum Working Air Pressure

50 psi (0.35 MPa, 3.5 bar) Maximum Working Fluid Pressure

MODEL 233440

Related Manuals

[309357](#) – V–Comp Gun



Important Safety Instructions

Read all warnings and instructions in this manual.
Save these instructions.

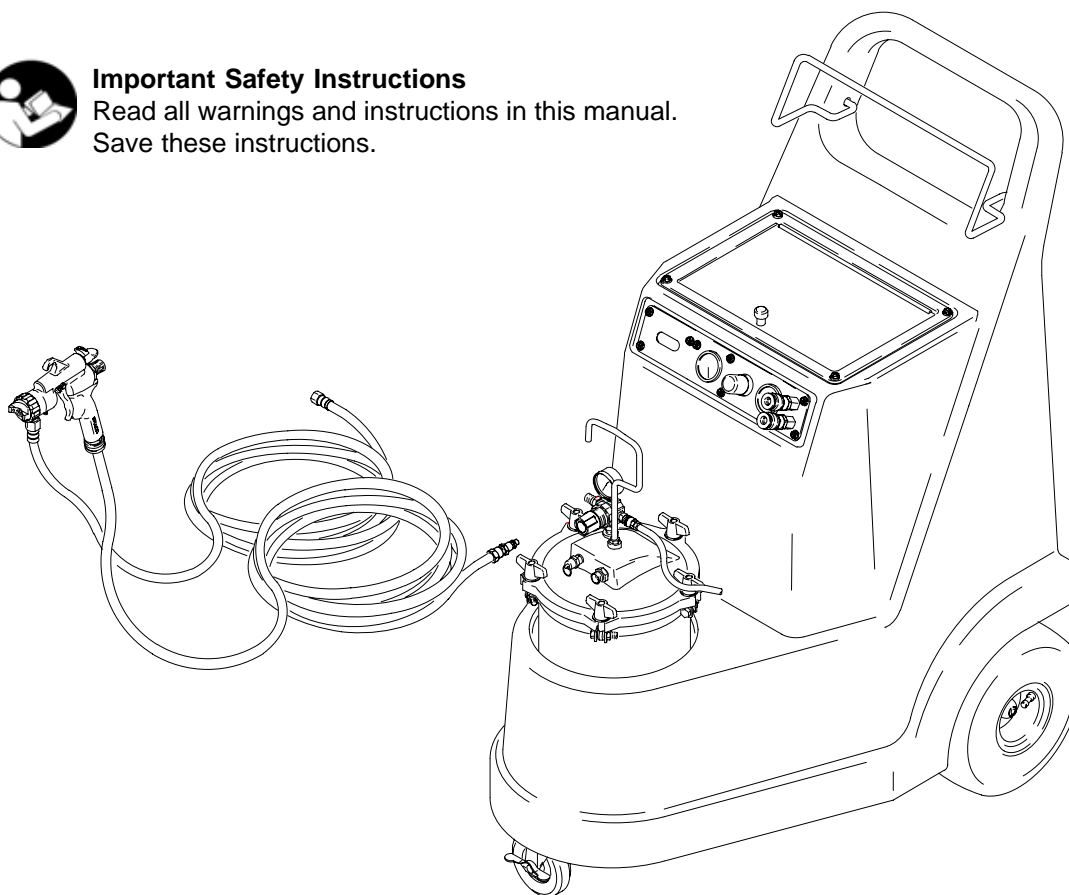


Table of Contents

Warnings	2	Service	8
Component Identification and Function	4	Technical Data	15
Preparation	6	Graco Warranty	16
Operation	7	Graco Phone Number	16
Shutdown	8		

Symbols

Warning Symbol



This symbol alerts you to the possibility of serious injury or death if you do not follow the instructions.

Caution Symbol



This symbol alerts you to the possibility of damage to or destruction of equipment if you do not follow the instructions.

! WARNING

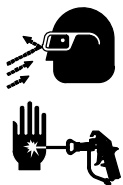


INSTRUCTIONS

EQUIPMENT MISUSE HAZARD

Equipment misuse can cause the equipment to rupture or malfunction and result in serious injury.

- This equipment is for professional use only.
- Read all instruction manuals, tags, and labels before operating the equipment.
- Use the equipment only for its intended purpose. If you are not sure, call your Graco distributor.
- Do not expose the system to rain. Always store the system indoors.
- Do not alter or modify this equipment. Use only genuine Graco parts.
- Check equipment daily. Repair or replace worn or damaged parts immediately.
- Do not exceed the maximum working pressure of the lowest rated component in your system or air-powered attachments/accessories. This equipment has a **maximum working pressure at 135 psi (0.93 MPa, 9.3 bar) maximum air pressure**.
- To reduce the risk of serious injury, including electric shock and splashing fluid in the eyes, follow the **Pressure Relief Procedure** on page 6 before checking or repairing the compressor.
- Do not use hoses to pull equipment.
- Route hoses away from traffic areas, sharp edges, moving parts, and hot surfaces. Do not expose Graco hoses to temperatures above 180°F (82°C) or below -20°F (-29°C).
- Do not lift pressurized equipment.
- The pressure pot assembly is protected from over-pressurization by a safety valve. Verify valve is working by pulling ring each time sprayer is used. Replace valve if it does not relieve air pressure or move freely when the ring is pulled.



PRESSURIZED EQUIPMENT HAZARD

Compressed air can result in serious injury.

- Compressed air can blow debris about randomly. Wear protective eyewear.
- Do not direct airstream at body. Compressed air can inject skin.

⚠ WARNING



TOXIC FLUID HAZARD

Hazardous fluid or toxic fumes can cause serious injury or death if splashed in the eyes or on the skin, inhaled, or swallowed.

- Know the specific hazards of the fluid you are using.
- Store hazardous fluid in an approved container. Dispose of hazardous fluid according to all local, state and national guidelines.
- Always wear protective eyewear, gloves, clothing and respirator as recommended by the fluid and solvent manufacturer.
- Pipe and dispose of exhaust air safely, away from people, animals, and food handling areas.
- Never directly inhale compressed air. Compressed air may contain toxic vapors.
- Do not use 1,1,1-trichloroethane, methylene chloride, other halogenated hydrocarbon solvents, or fluids containing such solvents in the turbine spray system, which contains aluminum and/or galvanized-coated parts. Such use could result in a serious chemical reaction, with the possibility of explosion, which could cause death, serious injury, and/or substantial property damage.



FIRE AND EXPLOSION HAZARD

Improper grounding, poor ventilation, open flames or sparks can cause a hazardous condition and result in a fire or explosion and serious injury.

- Use fluids compatible with the equipment wetted parts. Refer to the **Technical Data** section of all equipment manuals. Read the fluid and solvent manufacturer's warnings.
- Ground all equipment, containers, and objects being sprayed. Page 6.
- If there is any static sparking or you feel an electric shock while using this equipment, **stop spraying immediately**. Do not use the equipment until you identify and correct the problem.
- Use only in extremely well ventilated areas. Provide fresh air ventilation to avoid the buildup of flammable fumes from solvents or the fluid being sprayed.
- Keep the work area free of debris, including solvent, rags, and gasoline.
- Locate the sprayer at least 20 ft (6.1 m) away from any explosive vapors, due to arcing parts.
- Comply with all applicable local, state, and national fire, electrical, and safety regulations.
- Avoid all ignition sources.
 - Extinguish all open flames or pilot lights in the spray area.
 - Do not smoke in the spray area.
 - Do not turn any light switch in the spray area on or off while operating equipment or if fumes are present.
 - Do not operate a gasoline engine in the spray area.
- Pressure can cause a rusted tank to explode. Drain tank after each use by opening air tank drain valve located under the sprayer.



CLEANING SOLVENT HAZARD WITH PLASTIC PARTS

Use only compatible solvents to clean plastic structural or pressure-containing parts. Many solvents can degrade plastic parts to the point where they could fail. Such failure could cause serious injury or property damage. See the **Technical Data** section on page 15 in this instruction manual and in all other equipment manuals. Read the fluid and solvent manufacturer's warnings.

Component Identification and Function

A	ON/OFF switch	Power switch controlling 120V AC power to sprayer. ON – Sprayer automatically starts when tank pressure falls below 110 psi and automatically stops when tank pressure reaches 135 psi. OFF – Sprayer is off.
B	Tank pressure gauge	Indicates pressure in internal 6–gallon air tank.
C	Air pressure regulator	Adjusts air pressure to spray gun.
D	Spray pressure gauge	Indicates air pressure to spray gun.
E	Spray air outlet	Provides quick disconnect connection for regulated air supply to spray gun or other air tools.
F	Tank air outlet	Provides quick disconnect connection for unregulated air supply to 2.5 gallon paint pot or other air tools. (Rated for 135 psi maximum working pressure.)
G	Tool box	Provides storage for accessories and tools
H	Air Tank Drain Valve	Allows air tank moisture to be drained
J	Pressure Pot	Holds 2–1/2 gallons of material
K	Hose Holder	Provides storage for sprayer hose, cord, and gun
M	Compressor	Open frame AC motor, 1 phase, two–cylinder, oilless, single–stage air compressor
N	Air Tank	6–gallon air storage tank
P	Tank Air Hose	2–foot air hose provides air to pressure pot
R	Spray Air Hose	30–foot air hose provides atomizing air to spray gun
S	Material Hose	30–foot material hose provides material to spray gun
T	Spray Gun	Uses compressor air to atomize and spray material

Component Identification and Function

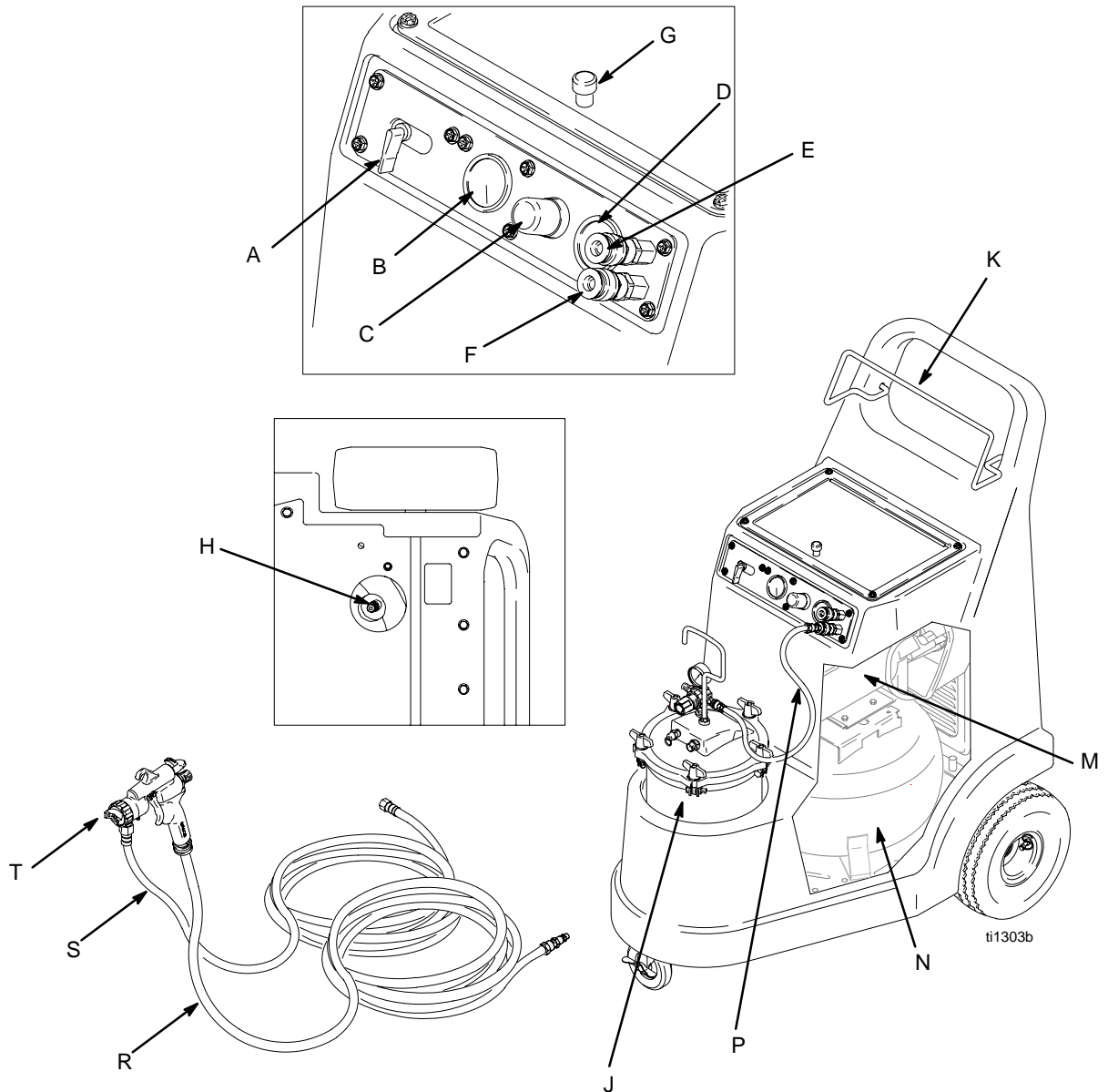


Fig. 1

Preparation

Compressor Break-in

The first time you use the system, run the compressor under no load for 15 minutes to break it in, improve its performance and lengthen its life.

1. Fully open air tank drain valve under back of sprayer.
2. Plug the power cord into a properly grounded outlet (Fig. 1).
3. Turn ON/OFF switch to ON. Allow system to run for 15 minutes.
4. Turn ON/OFF switch to OFF. Close drain valve.

WARNING

PRESSURIZED EQUIPMENT HAZARD

The system pressure must be manually relieved to prevent the system from starting or spraying accidentally. To reduce the risk of an injury from accidental spray from the gun, splashing fluid, or moving parts, follow the **Pressure Relief Procedure** whenever you

- Are instructed to relieve the pressure
- Stop spraying
- Check or service any of the system equipment
- Install or clean the spray nozzle



Pressure Relief Procedure

1. Turn ON/OFF switch to OFF position.
2. Unplug electrical power cord.
3. Open air tank drain valve under back of sprayer to relieve tank pressure.
4. Close drain valve.
5. Verify 2.5 gallon pressure pot has been relieved by pulling ring on safety valve.

Grounding and Electrical Requirements

WARNING



ELECTRIC SHOCK HAZARD

Improper installation of the grounding plug can result in a risk of electrical shock. If repair or replacement of the cord or plug is necessary, do not connect the grounding wire to either flat blade terminal. The wire with insulation, having an outer surface that is green, with or without yellow stripes, is the grounding wire.

This product shall be grounded. In the event of an electrical short circuit, grounding reduces the risk of electrical shock providing an escape wire for the electrical current. This product is equipped with a cord having a grounding wire with an appropriate grounding plug. The plug must be plugged into an outlet that is properly installed and grounded in accordance with all local codes and ordinances.

Check with a qualified electrician or serviceman if the grounding instructions are not completely understood, or if in doubt as to whether the product is properly grounded. Do not modify the plug provided; if it will not fit the outlet, have the proper outlet installed by a qualified electrician.

This product is for use on a nominal 120-volt circuit and has a grounding plug that looks like the plug illustrated. Make sure that the product is connected to an outlet having the same configuration as the plug. No adapter should be used with this product.

WARNING

Improper installation or alteration of the grounding plug will result in a risk of electric shock, fire or explosion that could cause serious injury or death.

Extension Cords

- Use only an extension cord with an undamaged, 3-prong plug.
- For up to 25 ft (7.6 m) cord, use 3-wire, 12 AWG (1.5 mm²) minimum.
- For 25 to 50 ft (7.6 to 15.2 m) cords, use 3-wire, 10 AWG (2.5 mm²) minimum.
- This equipment requires a 120V AC, 60 Hz, 15A circuit with a grounding receptacle. See Fig. 2.

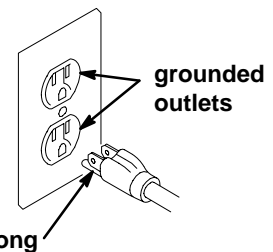


Fig. 2 **grounding prong**

- Do not alter the ground prong or use an ungrounded adapter.
- A maximum length of 25 ft, 12 AWG or 50 ft, 10 AWG extension cord may be used.

Preparation

System Setup

1. Turn ON/OFF switch to OFF position.
2. Connect 30 ft material hoses with 3/8-in. 18 npsm connector to gun and pressure pot.
3. Connect 30 ft air hose with quick connects to gun and spray air outlet on sprayer.
4. Connect 2 ft air hose to 2.5 gallon pressure pot and tank air outlet on sprayer.
5. Plug the power cord into a properly grounded outlet.

⚠ WARNING

The motor has a thermal overload switch that shuts down the motor if it overheats.

To reduce the risk of serious bodily injury due to the system restarting unexpectedly, always turn the ON/OFF switch to OFF if the motor shuts down.

Operation

1. Fill 2.5 gallon pressure pot with material.
2. Verify cover seal is properly installed and securely fasten pot cover.
3. Turn sprayer on. Allow sprayer to run until the motor stops and maximum tank pressure is reached.
4. Pull pressure regulator knob on pressure pot out and adjust pot to desired pressure for the material being sprayed. Typical pot pressures range from 5–10 psi for low viscosity materials, 10–15 psi for medium viscosity materials and 15–30 psi high viscosity materials. Do not exceed the 50 psi maximum pressuring rating of the pressure pot.
5. Pull pressure regulator knob on sprayer out and adjust spray air to the desired pressure for the material being sprayed. (Fig. 3). Use the **MINIMUM** pressure necessary to atomize the material to minimize overspray and maximize spray time.
6. Practice spraying on scrap material until you're satisfied with spray pattern size and shape. See gun manual 309357 for more information.



All material and pressure noted in Selection Guide (below) are to be used with a #3 fluid set.

Material / Pressure Selection Guide						
Material	* Spray Air Pressure					
	10 psi	20 psi	30 psi	40 psi	50 psi	60 psi
Dye	████████					
Ink	████████					
Non-Wiping Stain	████████					
Automotive Finish	████████	████████	████████			
Lacquer		████████	████████	████████		
Stain		████████	████████	████████		
Enamel		████████	████████	████████	████████	
Epoxy		████████	████████	████████	████████	
Urethane		████████	████████	████████	████████	
Varnish		████████	████████	████████	████████	
Primer			████████	████████	████████	
Industrial Finishes					████████	████████
Latex					████████	████████
Multi-Spec					████████	████████
Butyrate						████████
Nitrate Dope						████████
Oil Wall Paint						████████

Note:
For best quality paint pattern at low pressures follow paint manufacturer's recommendation for thinning.
Read instruction manual for additional information.

* Spray Air Pressure with gun not triggered.

████████ HVLP Spray
████████ Air Spray

198401, Rev. B


Fig. 3


Shutdown



1. Perform **Pressure Relief Procedure**. Page 6.
2. Allow sprayer to cool before handling.

Service


Servicing Controls


**WARNING**







**PRESSURIZED EQUIPMENT HAZARD**
Compressed air can inject skin. Air tubing located under toolbox can cause injury if disconnected while under pressure.

1.  **Relieve the pressure.** See **Pressure Relief Procedure** on page 6.
2. Access controls for service by removing the four screws mounting the tool box assembly to the sprayer housing.
3. Remove the toolbox assembly from the sprayer housing.
4. Reassemble in reverse order.

Removing and Reinstalling Compressor

**WARNING**

**HOT SURFACE HAZARD**
Be sure the compressor duct work is cool before removing it. If the sprayer was operated recently, it will be very hot and can cause burns.

1.  **Relieve the pressure.** See **Pressure Relief Procedure** on page 6.
2.  **Review Grounding and Electrical Requirements,** page 6.
3. Remove the tool box assembly by removing the four corner screws (42).
4.  Disconnect the air tubing (48, 49) and wires from the compressor (8).
5. Tilt the sprayer back, resting the handle on the floor to access the wheels (13), axle (10) and base plate (9).

6. Remove one cap (14). Use a pliers to squeeze the cap until the cap releases from the axle.



The crushed cap will have sharp edges that could scratch or score the axle. Be careful when removing the cap to minimize this scoring.



The axle hub will probably be destroyed when you remove it. Always order a new set of caps when ordering compressor repair kits.

7. Remove wheel (13) and spacer (11).
8. From the other side of the unit, pull the wheel and axle through the sprayer housing to remove it.
9. Remove the ten hex-head screws (25) from outside perimeter of the base plate.
10. Place a large piece of cardboard on the floor to protect the floor.
11. Carefully guide the sprayer back to an upright position over the cardboard on the floor.
12. Lift the housing (1) straight up, off the compressor.



For repair assistance or for compressor service center locations, call Graco Technical Assistance: 1-800-690-2894.

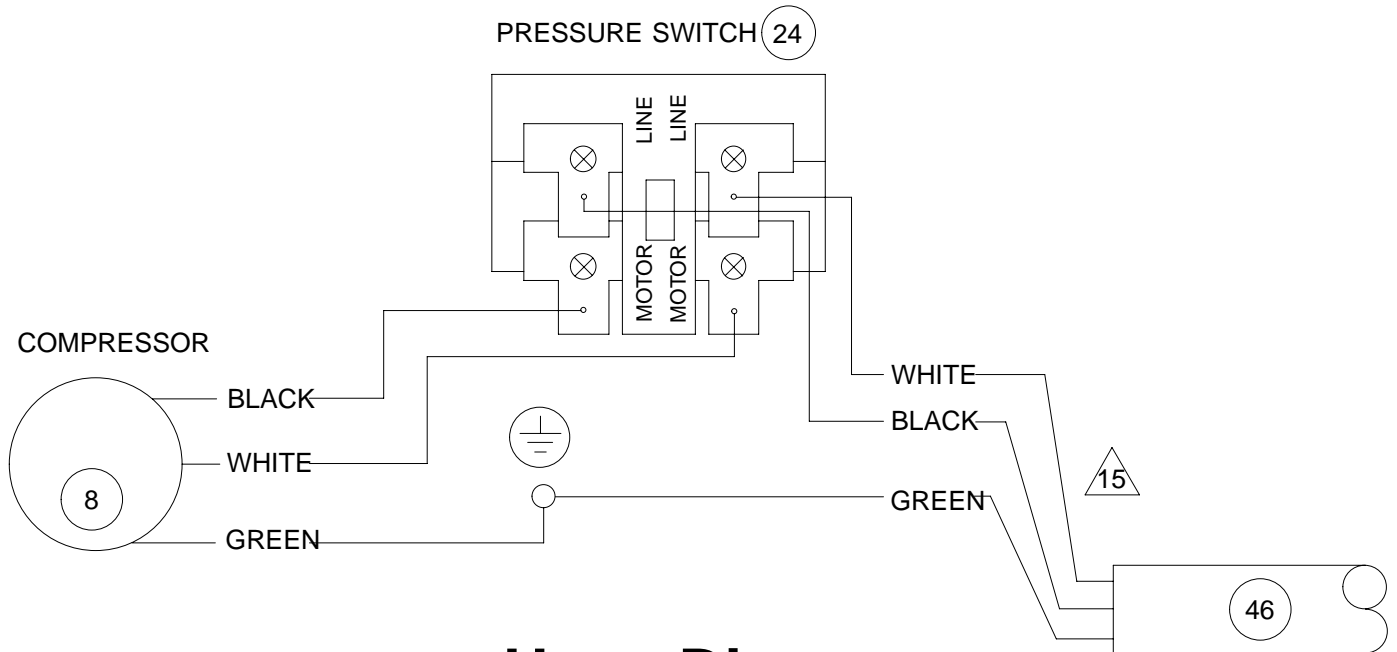
Service

Reinstalling Compressor

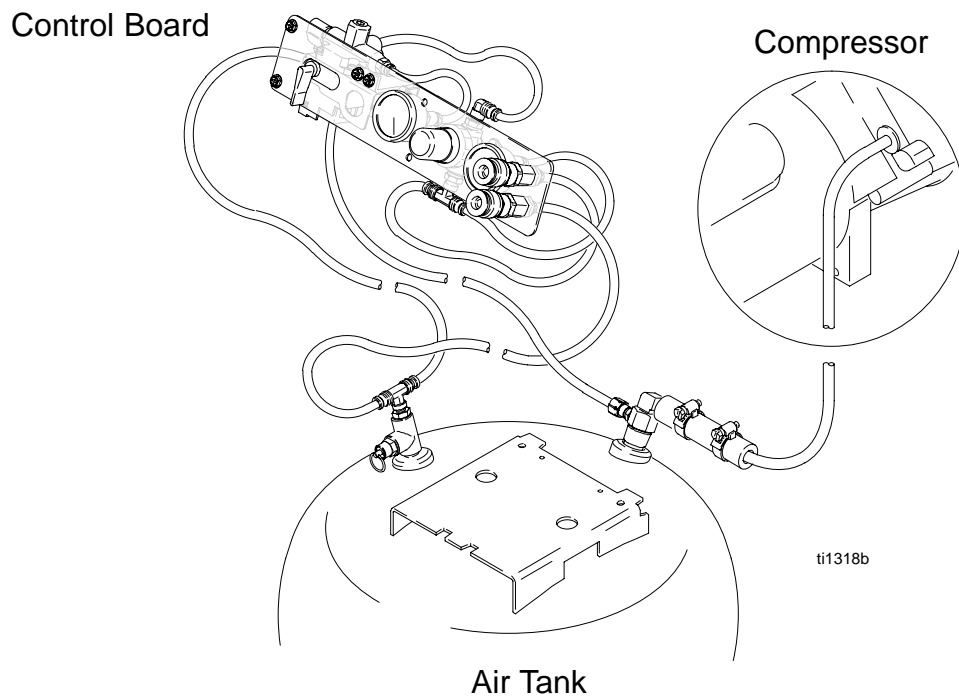
Reassemble the V-Comp Sprayer in the reverse order of **Removing Compressor**.

See the wiring diagram and air tubing figure below.

120V Wiring Diagram



Hose Diagram



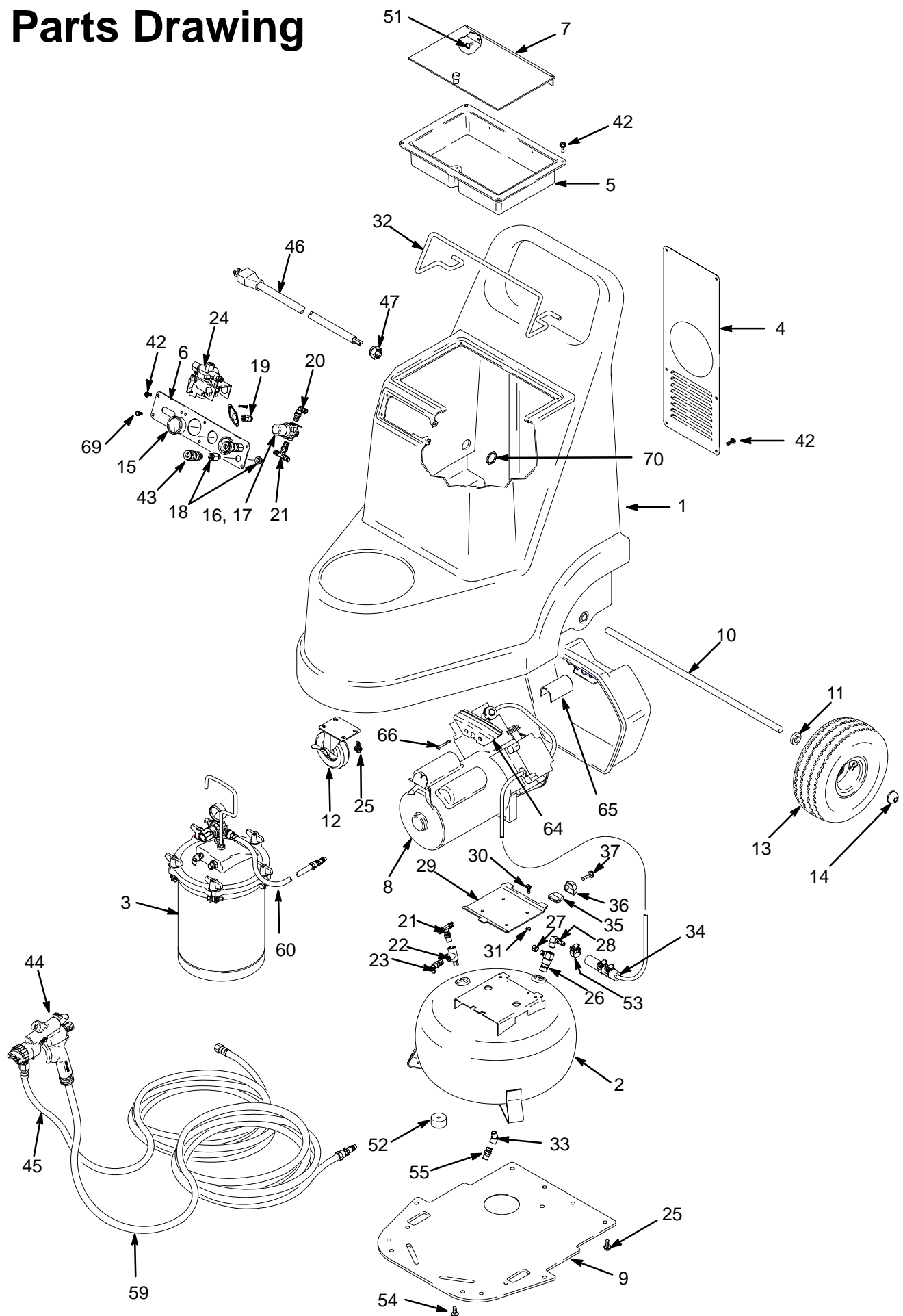
Parts List

HVLP V-COMP SPRAY SYSTEM

Model 233440

Ref No.	Part No.	Description	Qty	Ref No.	Part No.	Description	Qty
1	197048	HOUSING ASSY, cart	1	35	*	ISOLATOR, compressor	3
2	♣	TANK, air	1	36	*	RETAINER, compressor	2
3	240045	TANK, 2.5 gallon, fluid	1	37	*	SCREW, retainer*	2
4	198433	PLATE, back	1	38	197072	LABEL, identification (not shown)	1
5	♣	BOX, tool	1	39	198400	LABEL, identification (not shown)	1
6	198407	PLATE, front	1	40▲	198401	LABEL, safety info (not shown)	1
7	244349	LID, tool box	1	42	116719	SCREW, 8-32 hex	18
8	239743	COMPRESSOR, air, 2 HP	1	43	116720	COUPLER, air, quick disconnect	2
9	15C781	PLATE, base	1	44	244120	GUN	1
10	197163	AXLE, cart	1	45	240476	HOSE, 3/8" ID, black, 30-foot	1
11	191824	WASHER, space	2	46	198384	CORD, power	1
12	116261	CASTER, swivel, 4-inch	1	47	116171	BUSHING, strain relief	1
13	116685	TIRE	2	48	116667	TUBE, air (not shown)	4
14	114817	CAP	2	50	116666	TUBE, air (not shown)	3
15	116257	GAUGE, pressure	2	51	114538	SCREW, machine, torx, pan head	2
16	115242	REGULATOR, air	1	52	116721	BUMPER, rubber	3
17	115244	REGULATOR, nut	1	53	113382	CLAMP, hose	2
18	116656	FITTING, tube, bulkhead	2	54	116731	SCREW, hex, wshr hd	3
19	116655	FITTING, tube, female	2	55	198491	VALVE, drain	1
20	116654	FITTING, tube, swivel	1	56▲	193095	LABEL, danger (not shown)	1
21	116659	FITTING, tube, swivel	2	57▲	193096	LABEL, warning (not shown)	1
22	106228	TEE	1	59	245151	HOSE, air, 3/8 in. x 30 ft	1
23	116710	VALVE, safety	1	60	245152	HOSE, air, 1/4 in. x 2 ft	1
24	245146	SWITCH, pressure	1	64	116736	COVER, filter	1
25	110963	SCREW, cap, flange head	14	65	116737	FILTER	1
26	116714	VALVE, check	1	66	116738	SCREW	2
27	116718	NUT, compression	1	69	116757	SCREW, 8-32 serrated hex	2
28	116717	FITTING, barbed, 90°	1	70	116964	NUT, hex, jam	1
29	198411	PLATE, support	1	▲ Replacement instruction and warning labels are available at no cost.			
30	100022	SCREW, cap, hex head	4	♣ Not available as a replacement part.			
31	102040	NUT, hex, 1/4-20 nylon	4	* Included in Compressor Kit 239743.			
32	198358	HANGER, hose	1				
33	113444	ELBOW	1				
34	113812	HOSE, air	1				

Parts Drawing

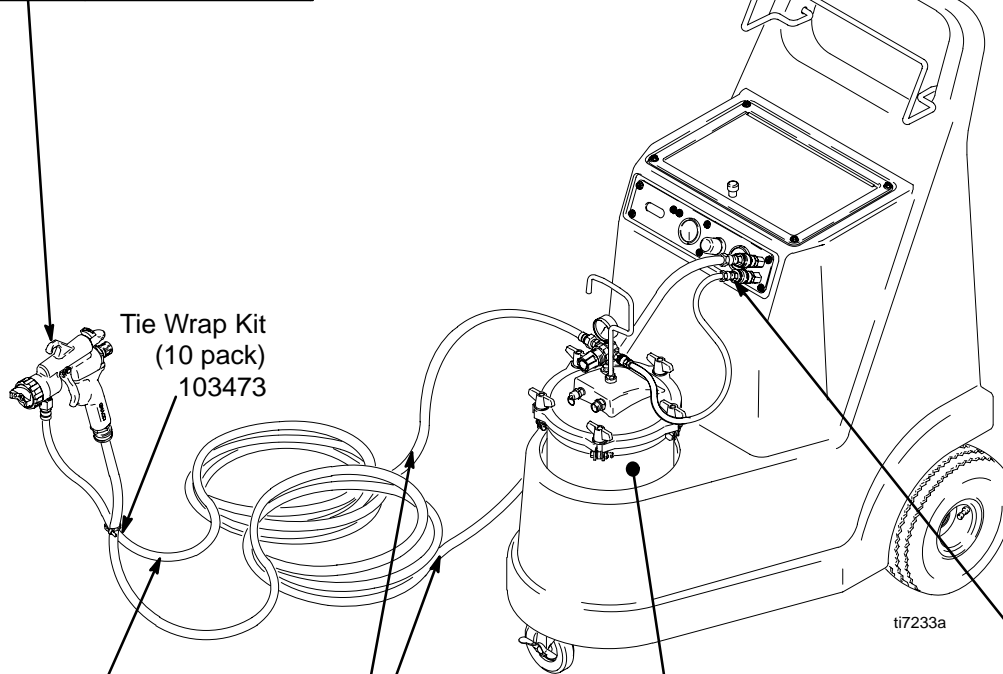


Accessories

Notes:

- See **HVLP Fine Finish Systems** brochure 300564 for all accessories.
- Non-Silicone Lubricant 111265 (4 oz) is available for fluid seals and wear areas.

Fluid Set (FS)/Spray Gun	
FS	Number
None	244119
3	244120



Material Hose	
Length (ft)	Number
30	240476

Air & Material Hose	
Length (ft)	Number
30	241423

Pressure Pot	
PTFE Lined	240045

Compressor Air Hose		
Pot	Length (ft)	Number
2 1/2 gal	2	240074
2 qt	30	240071

Connecting Rod Kit 239740
Service parts kit for compressor connecting rod replacement.

Compressor Cyl/Comp Ring Kit 239741
Service parts kit for cylinder and compression ring replacement.

Compressor Valve Plate Kit 239742
Service parts kit for valve plate assembly. Includes instructions.

110V/60Hz Compressor Replacement Kit 239743
Service parts kit for 110V, 60 Hz compressor replacement.

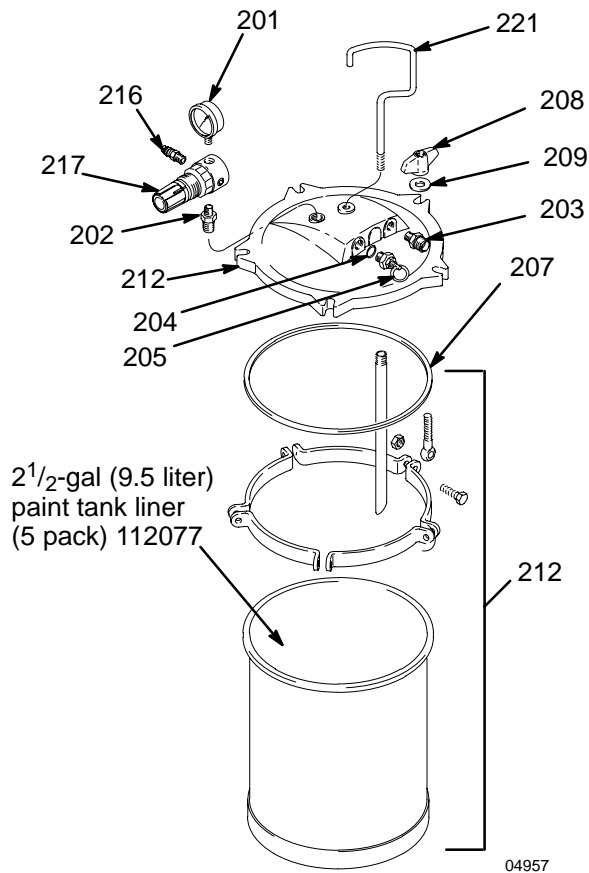
SST 1 Qt. Cup w/Single Air Regulator Kit 245181
1 qt. (0.95 liter) capacity, 304 SST cup. Includes a pressure relief valve and a single cup air regulator and gauge.

Accessories

2¹/₂-Gallon (9.5 liter) PTFE coated Pot 240045

50 psi (345 kPa, 3.5 bar) Maximum Inlet Air Pressure

2¹/₂-gallon (9.5 liter) capacity, steel tank. Includes air pressure regulator, gauge, and pressure relief valve.



Ref. No.	Part No.	Description	Qty.
201	104655	PRESSURE GAUGE	1
202	151519	REDUCER, 1/4 to 1/8	1
203	M70687	COUPLING	1
204	M70676	O-RING	1
205	M70686	PRESSURE RELIEF VALVE	1
207	244953	GASKET, standard; polyethylene (3/kit)	1
	M70616	GASKET, standard; EPDM (optional – must order separately 1/kit)	1
	244953	GASKET, solvent resistant;	1
208	M70678	WING NUT	5
209	M70677	WASHER	5
212	244288	TANK, paint, 2 ¹ / ₂ -gal (9.5 liter), with PTFE coat	1
216	169969	QUICK DISCONNECT, male	1
217	104815	PRESSURE REGULATOR	1
221	M71639	HANDLE	1

Accessories

2-Quart (1.9 liter) Pressure Pot 287819

50 psi (345 kPa, 3.5 bar) Maximum Inlet Air Pressure

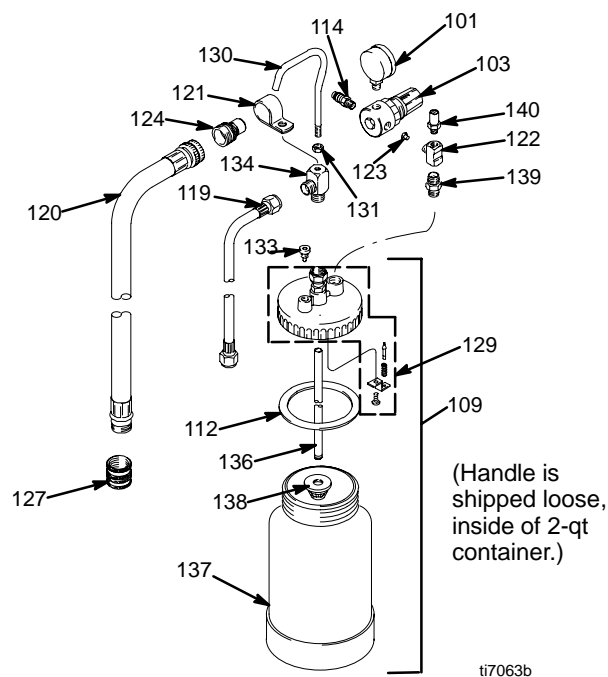
2-quart (1.9 liter) capacity, aluminum cup.

Includes air pressure regulator, gauge, pressure relief valve, and rigid hook handle.



WARNING

Do not use 1,1,1-trichloroethane, methylene chloride, other halogenated hydrocarbon solvents, or fluids containing such solvents in the turbine spray system, which contains aluminum and/or galvanized-coated parts. Such use could result in a serious chemical reaction, with the possibility of explosion, which could cause death, serious injury, and/or substantial property damage.



Ref. No.	Part No.	Description	Qty.
101	104655	PRESSURE GAUGE	1
103	104815	PRESSURE REGULATOR	1
109	287818	POT, 2 quart (1.9 liter), aluminum	1
112	120132	GASKET	1
	287821	GASKET KIT 5-pack	1
114	169969	FITTING	1
119	240474	HOSE, fluid; 60 in. long; 1/4 in. ID	1
120	240482	HOSE, air; 54 in. (1.37 m) long	1
121	M70854	HOSE CLAMP	1
122	110440	FITTING TEE	1
123	189557	RESTRICTOR	1
124	M70399	QUICK DISCONNECT, male	1
127	M70402	QUICK DISCONNECT	1
129	287820	VALVE KIT, check repair	1
130	120130	HANDLE	1
131	120129	NUT, handle	1
133	120127	VALVE, pressure release	1
134	120128	FITTING, outlet	1
136	120125	TUBE, fluid	1
137	120126	CUP, 2 quart	1
138	193218	STRAINER	1
139	120131	FITTING, inlet	1
140	120133	VALVE, pressure relief	1

NOTE:

- See HVLP Finish Systems brochure 300564 for all accessories.
- Non-silicone lubricant 111265 (4 oz.) is available for fluid seals and wear areas.

Technical Data

Maximum fluid pressure	50 psi (0.35 MPa, 3.5 bar)
Maximum air pressure	135 psi (0.93 MPa, 9.3 bar)
Air line connections	Quick-disconnect
Fluid connections	3/8 nps 1/8 npsm
Sound levels per ISO 3744	
Sound power level	less than 90.0 dB(A)
Sound pressure level	less than 90.0 dB(A)
Wetted parts	
Spray gun	stainless steel, aluminum
2 ¹ / ₂ -gallon remote pressure pot	steel with PTFE finish, polyethylene
Compressor specifications	AC brushless open motor, thermally protected, oil-less, 120/240V, 60/50 HZ, 15/13A
Weight	
Without hoses, gun, or pot	126 lb (57 kg)
With hoses, gun, or pot	145 lb (66 kg)
Dimensions	
Length	34 in (86 cm)
Width	26 in (66 cm)
Height	42 in (107 cm)

Graco Warranty

Graco warrants all equipment manufactured by Graco and bearing its name to be free from defects in material and workmanship on the date of sale to the original purchaser for use. With the exception of any special, extended, or limited warranty published by Graco, Graco will, for a period of twelve months from the date of sale, repair or replace any part of the equipment determined by Graco to be defective. This warranty applies only when the equipment is installed, operated and maintained in accordance with Graco's written recommendations.

This warranty does not cover, and Graco shall not be liable for general wear and tear, or any malfunction, damage or wear caused by faulty installation, misapplication, abrasion, corrosion, inadequate or improper maintenance, negligence, accident, tampering, or substitution of non-Graco component parts. Nor shall Graco be liable for malfunction, damage or wear caused by the incompatibility of Graco equipment with structures, accessories, equipment or materials not supplied by Graco, or the improper design, manufacture, installation, operation or maintenance of structures, accessories, equipment or materials not supplied by Graco.

This warranty is conditioned upon the prepaid return of the equipment claimed to be defective to an authorized Graco distributor for verification of the claimed defect. If the claimed defect is verified, Graco will repair or replace free of charge any defective parts. The equipment will be returned to the original purchaser transportation prepaid. If inspection of the equipment does not disclose any defect in material or workmanship, repairs will be made at a reasonable charge, which charges may include the costs of parts, labor, and transportation.

THIS WARRANTY IS EXCLUSIVE, AND IS IN LIEU OF ANY OTHER WARRANTIES, EXPRESS OR IMPLIED, INCLUDING BUT NOT LIMITED TO WARRANTY OF MERCHANTABILITY OR WARRANTY OF FITNESS FOR A PARTICULAR PURPOSE.

Graco's sole obligation and buyer's sole remedy for any breach of warranty shall be as set forth above. The buyer agrees that no other remedy (including, but not limited to, incidental or consequential damages for lost profits, lost sales, injury to person or property, or any other incidental or consequential loss) shall be available. Any action for breach of warranty must be brought within two (2) years of the date of sale.

Graco makes no warranty, and disclaims all implied warranties of merchantability and fitness for a particular purpose in connection with accessories, equipment, materials or components sold but not manufactured by Graco. These items sold, but not manufactured by Graco (such as electric motors, switches, hose, etc.), are subject to the warranty, if any, of their manufacturer. Graco will provide purchaser with reasonable assistance in making any claim for breach of these warranties.

In no event will Graco be liable for indirect, incidental, special or consequential damages resulting from Graco supplying equipment hereunder, or the furnishing, performance, or use of any products or other goods sold hereto, whether due to a breach of contract, breach of warranty, the negligence of Graco, or otherwise.

FOR GRACO CANADA CUSTOMERS

The parties acknowledge that they have required that the present document, as well as all documents, notices and legal proceedings entered into, given or instituted pursuant hereto or relating directly or indirectly hereto, be drawn up in English. Les parties reconnaissent avoir convenu que la rédaction du présente document sera en Anglais, ainsi que tous documents, avis et procédures judiciaires exécutés, donnés ou intentés à la suite de ou en rapport, directement ou indirectement, avec les procédures concernées.

ADDITIONAL WARRANTY COVERAGE

Graco does provide extended warranty and wear warranty for products described in the "Graco Contractor Equipment Warranty Program".

Graco Phone Number

TO PLACE AN ORDER, contact your Graco distributor, or call this number to identify the distributor closest to you:
1-800-690-2894 Toll Free

*All written and visual data contained in this document reflect the latest product information available at the time of publication.
Graco reserves the right to make changes at any time without notice.*

mm 309245

This manual contains English

Graco Headquarters: Minneapolis

International Offices: Belgium, China, Japan, Korea

GRACO INC. P.O. BOX 1441 MINNEAPOLIS, MN 55440-1441

www.graco.com

05/2001, Revised 8/2006