

Instructions



55 GALLON STANDARD DRUM

Hot Melt Wiper Kits

309196 rev.E

Designed to fit straight sided drums with a 22.5" (571 mm) ID

Model 243279 (built prior to May 2006)

Model 253292 (built May 2006 and after)

Dual Tee Wipers

Maximum Temperature 250°F (121°C)

Model 245668 (built prior to May 2006)

Model 253290 (built May 2006 and after)

Tee Wiper / Steam Hose

Maximum Temperature 375°F (190°C)

Model C31007 (built prior to May 2006)

Model 253291 (built May 2006 and after)

Silicone Hose / Steam Hose

Maximum Temperature 400°F (204°C)

Model 234995 (built prior to May 2006)

Model 253289 (built May 2006 and after)

Spring / Hose Wipers

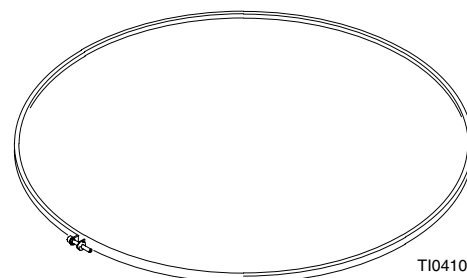
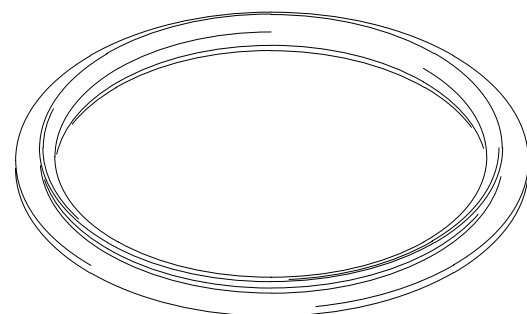
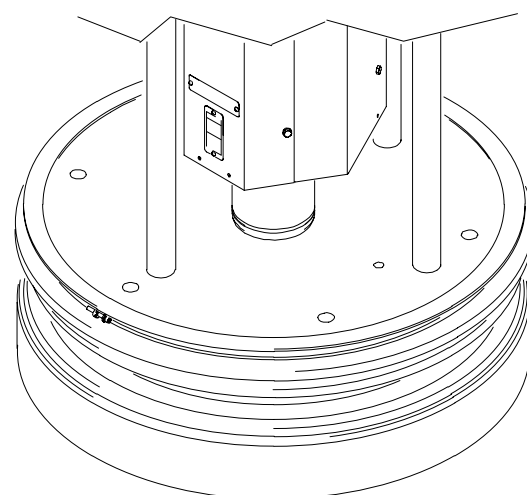
Maximum Temperature 400°F (204°C)

Table of Contents

Symbols	2
Warnings	2
Related Publications	2
Installation	3
Parts	7
Technical Data	11
Graco Standard Warranty	12
Graco Information	12



Read warnings and instructions.



T10410

PROVEN QUALITY. LEADING TECHNOLOGY.

Symbols

Warning Symbol



This symbol alerts you to the possibility of serious injury or death if you do not follow the instructions.

Caution Symbol



This symbol alerts you to the possibility of damage to or destruction of equipment if you do not follow the instructions.

WARNING



HOT SURFACE AND FLUID HAZARD

Heated fluid can cause severe burns and can cause equipment surfaces to become very hot.

- Wear protective gloves and clothing when operating this equipment in a heated system.
- Do not touch the metal heat sink when the surface is hot.
- Allow the equipment to cool thoroughly before servicing.

Some heated systems are designed to dispense Polyurethane (PUR) heated materials. PUR systems are supplied with ventilation hoods, and require proper ventilation and specially designed system components.



MOVING PARTS HAZARD

Moving parts, such as the ram plate and pump inlet, can pinch or amputate your fingers.

- Keep clear of all moving parts when starting or operating the equipment.
- Keep hands and fingers away from the priming piston during operation and whenever the pump is charged with air.
- Keep clear of the ram plate, pump fluid inlet, and lip of the fluid container when raising or lowering the ram.

Related Publications

Form Name

Therm-O-Flow Installation and Operation
Therm-O-Flow Installation and Operation

Form#

309180
311208

Installation

Twin Tee Wiper Kit 243279 / 253292

Clean the seal grooves as follows:

1. Using a wooden or plastic tool to prevent damage to the wiper, clean all material from the seal grooves.
2. Lubricate ram plate grooves, bands, and wipers before assembly.

Install the wiper ring seals as follows:

NOTE: Wipers are marked top and bottom for 243270. 253292 uses the same wiper top and bottom.

1. Pull the top wiper over the platen assembly. Roll the first wiper ring (10) down to the top ring groove as shown in Fig. 1.
2. Install the first upper band (20) over the wiper ring, placing it in the top groove of the wiper.

⚠ CAUTION
Do not over tighten the screw in the band. Over tightening the screw will deform the wiper ring.

3. Secure the top band using the screw in the band.
4. Install the second upper band onto the bottom of the wiper ring on the top groove of the wiper ring.

5. Secure the top band using the screw in the band.
6. Roll the second wiper ring up from the bottom of the plate to the bottom ring groove.
7. Install the first lower band over the wiper ring on the bottom groove, placing it in the top groove of the bottom wiper.

⚠ CAUTION
Do not over tighten the screw in the band. Over tightening the screw will deform the wiper ring.

8. Secure the lower band using the screw in the band.
9. Install the second lower band onto the bottom of the wiper ring on the bottom groove of the wiper ring.
10. Secure the lower band using the screw in the band.

⚠ CAUTION
Make sure the wipers are lubricated. Without lubrication, the wipers may tear.

11. Using a lubricant compatible with the material to be pumped, lubricate the ram plate wipers.

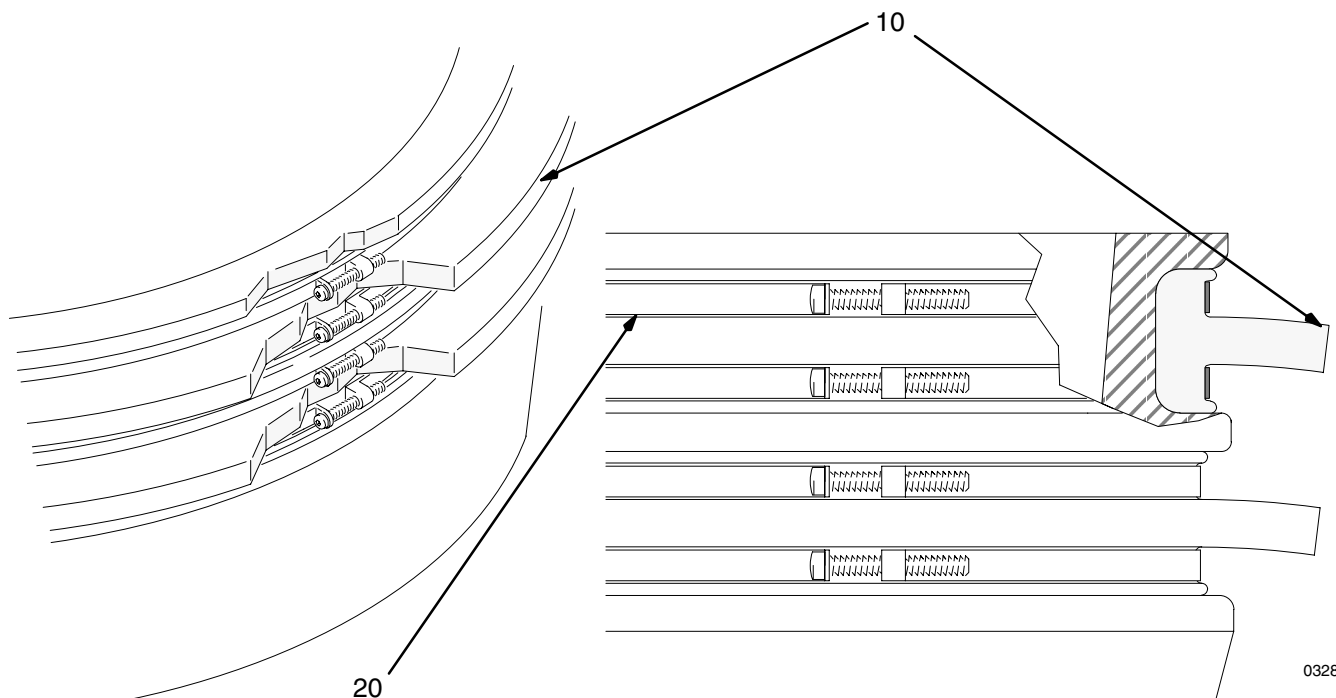


Fig. 1

03288

Installation

Tee Wiper / Steam Hose Kit 245668 / 253290

Clean the seal grooves as follows:

1. Using a wooden or plastic tool to prevent damage to the wiper, clean all material from the seal grooves.
2. Lubricate ram plate grooves, bands, and wipers before assembly.

Install the wiper ring seals as follows:

NOTE: Upper wiper is tee, lower is hose.

1. Pull the tee wiper over the platen assembly. Roll the tee wiper ring (10) down to the top ring groove as shown in Fig. 2.
2. Install the first upper band (20) over the wiper ring, placing it in the top groove of the wiper.

⚠ CAUTION

Do not over tighten the screw in the band. Over tightening the screw will deform the wiper ring.

3. Secure the top band using the screw in the band.
4. Install the second upper band onto the bottom of the wiper ring on the top groove of the wiper.
5. Secure the top band using the screw in the band.

⚠ CAUTION

Make sure the wipers are lubricated. Without lubrication, the wipers may tear.

6. Assemble and cut band as shown in Fig. 2.
7. Install screw jack in slot. Tape around tab in slot.
8. Install hose and band so that angled ends of hose press against each other.
9. After installing clamp, work hose with mallet to completely close gap at the ends.
10. Hose seam must be in line with tie rod holes [+ or - 1" (25.4 mm)].

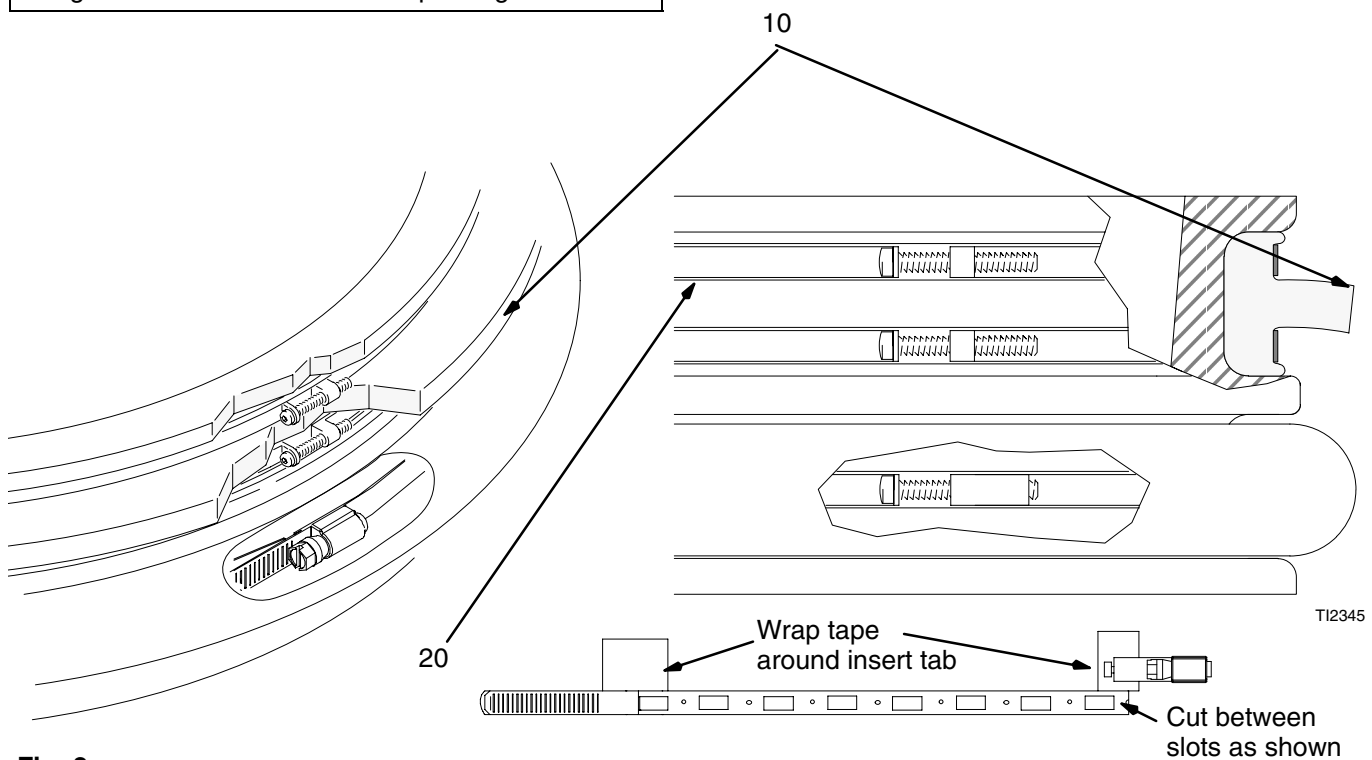


Fig. 2

Installation

Silicone Hose / Steam Hose Kit C31007 / 253291

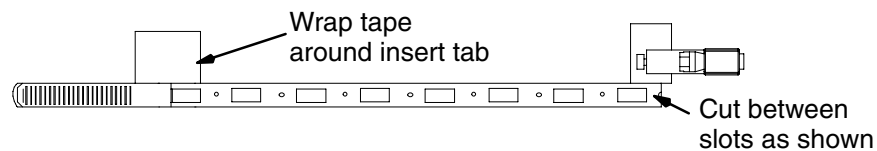
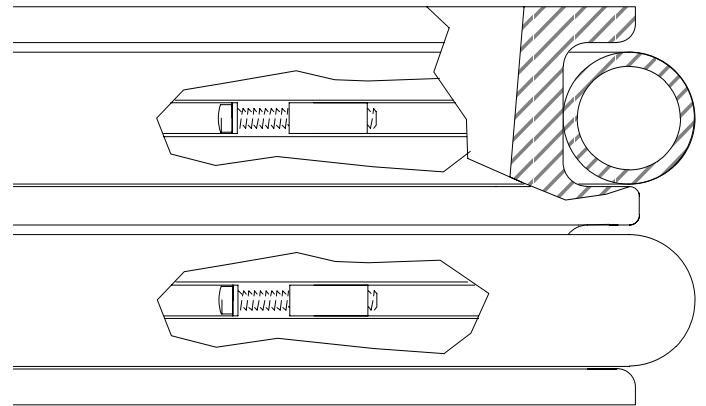
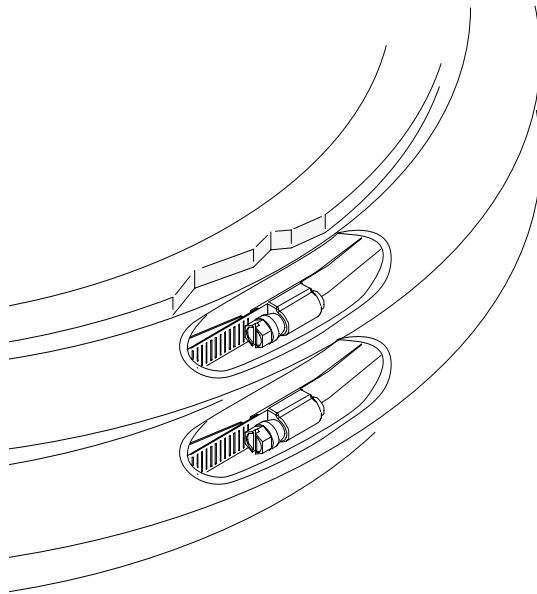
Clean the seal grooves as follows:

1. Using a wooden or plastic tool to prevent damage to the wiper, clean all material from the seal grooves.
2. Lubricate ram plate grooves, bands, and wipers before assembly.

Install the wiper ring seals as follows:

NOTE: Upper wiper is green hose, lower is black hose.

1. Assemble and cut band as shown in Fig. 3.
2. Install screw jack in slot. Tape around tab in slot.
3. Install hose and band so that angled ends of hose press against each other.
4. After installing clamp, work hose with mallet to completely close gap at the ends.
5. Hose seam must be 180° apart, and in line with tie rod holes [+ or - 1" (25.4 mm)].



TI2345

Fig. 3

Installation

Spring / Hose Wipers Kit 234995 / 253289

Clean the seal grooves as follows:

1. Using a wooden or plastic tool to prevent damage to the wiper, clean all material from the seal grooves.
2. Lubricate ram plate grooves, springs, and wipers before assembly.

Install the wiper ring seals as follows:

1. Install hose and spring so that the angled ends of the hose press against each other.
2. After installing spring (Fig. 4), work hose with mallet to completely close gap at the ends.
3. Hose seam must be 180° apart, and in line with tie rod holes [+ or - 1" (25.4 mm)].

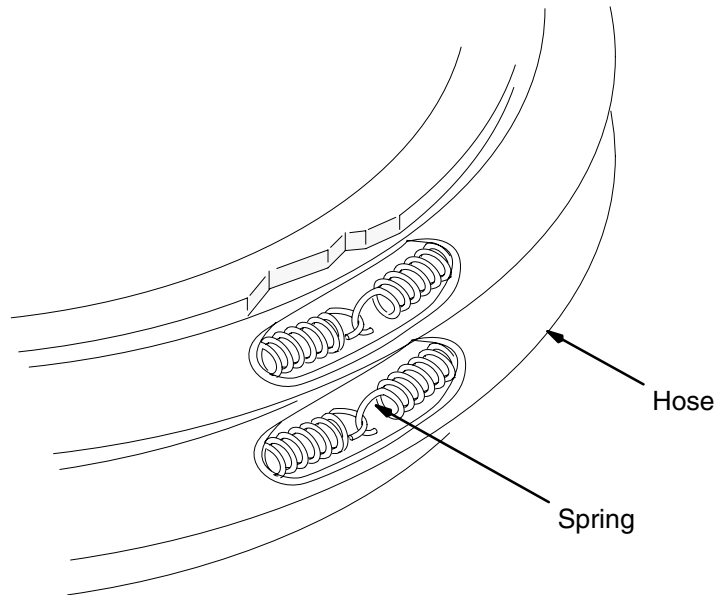


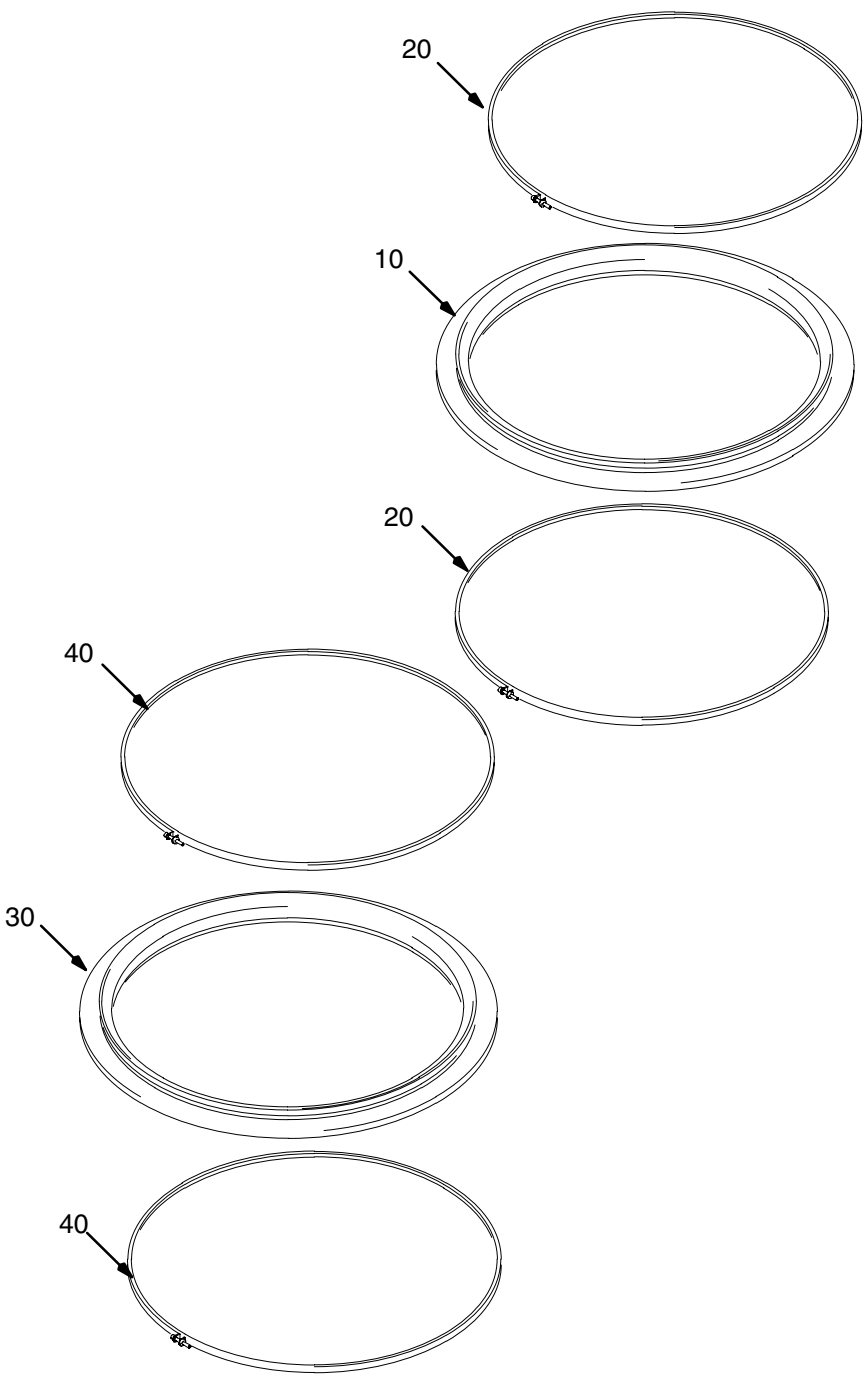
Fig. 4

ti1595a

Parts

Model 243279

Dual Tee Wipers



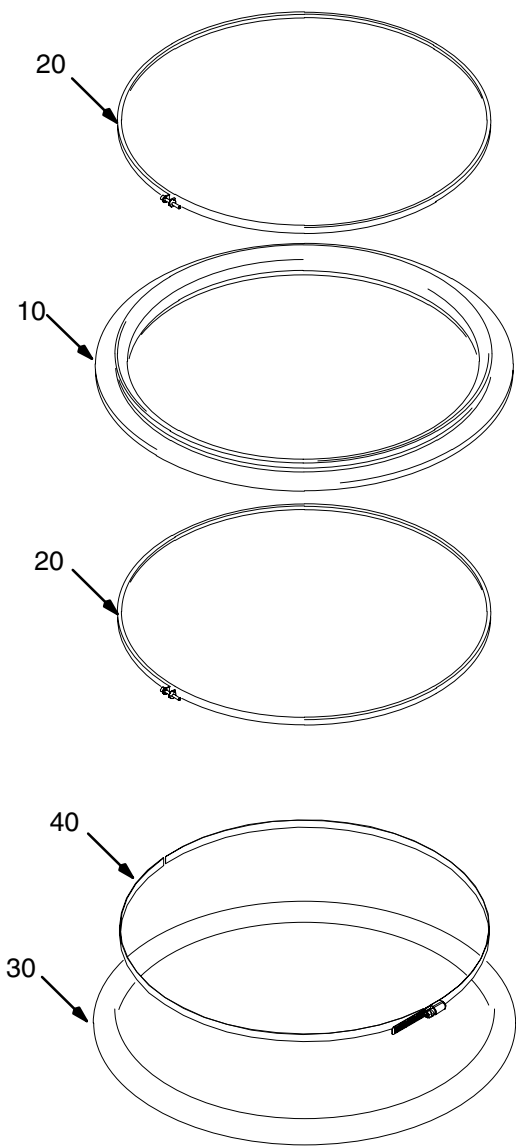
TI0410

Ref. No.	Part No.	Description	Qty.	Ref. No.	Part No.	Description	Qty.
10	115656	SEAL, wiper ring, upper	1	30	115655	SEAL, wiper ring, lower	1
20	115658	BAND, wiper ring, upper	2	40	115657	BAND, wiper ring, lower	2

Parts

Model 245668

Tee Wiper / Steam Hose



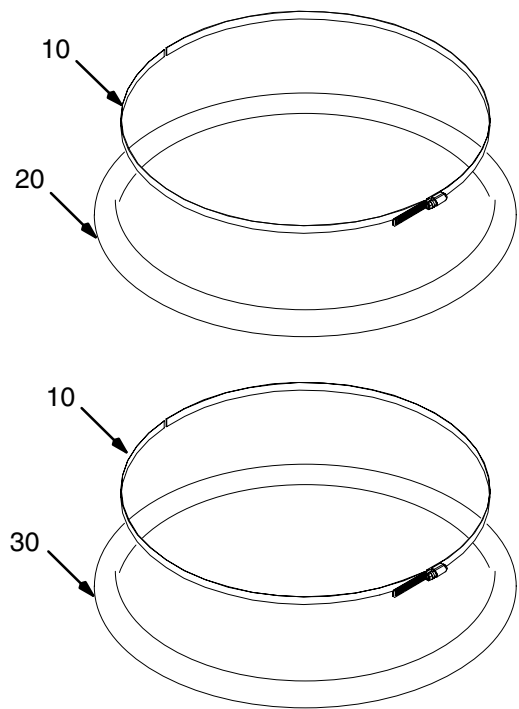
TI2346

Ref. No.	Part No.	Description	Qty.	Ref. No.	Part No.	Description	Qty.
10	115656	SEAL, tee wiper	1	30	C31005	HOSE, follower, lower	1
20	115658	BAND, wiper ring, upper	2	40	C33040	CLAMP, kit, single seal	1

Parts

Model C31007

Silicone Hose / Steam Hose



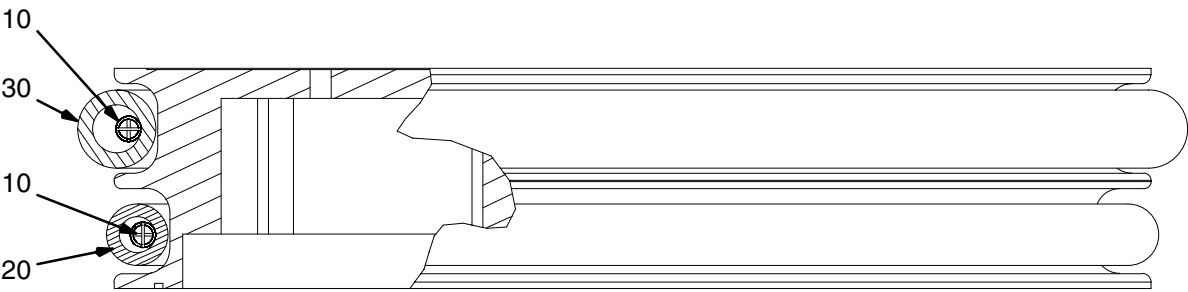
TI2346

Ref. No.	Part No.	Description	Qty.	Ref. No.	Part No.	Description	Qty.
10	C31002	CLAMP, tire	1	30	C31005	HOSE, follower, lower	1
20	C31003	HOSE, follower, upper	1				

Parts

Model 234995

Spring / Hose Wipers



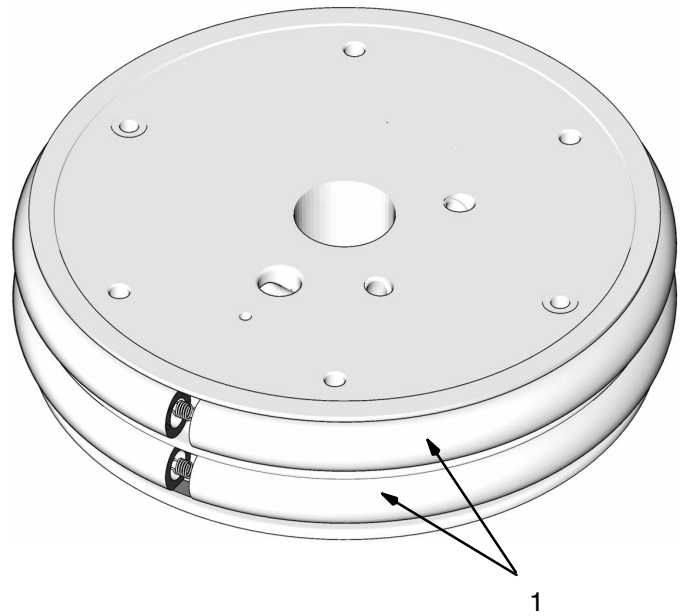
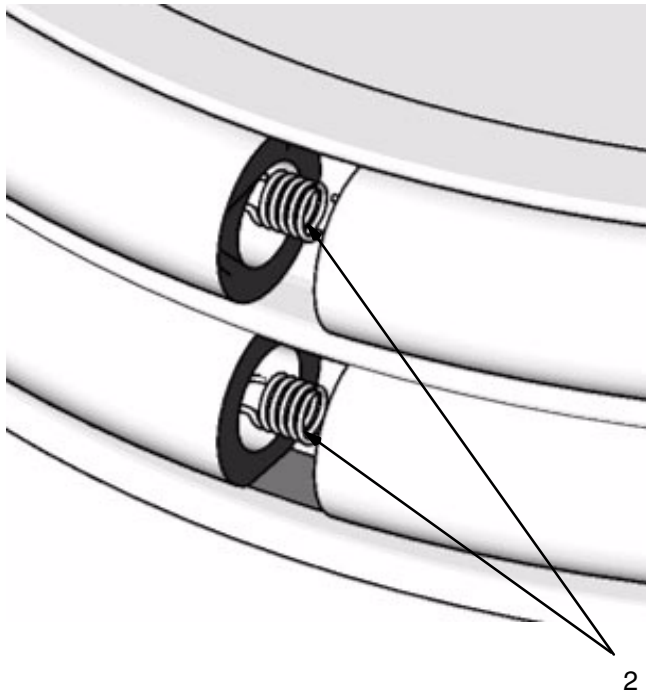
ti1594a

Ref. No.	Part No.	Description	Qty.	Ref. No.	Part No.	Description	Qty.
10	119415	SPRING, wiper retaining	2	30	119413	HOSE, follower, upper; 1"	1
20	119414	HOSE, follower, lower; 3/4"	1				

Parts

Model 253289, Tire Plate Seal

2 Black EPDM/EPDM, SS wire braid Hose Wipers w/spring retention

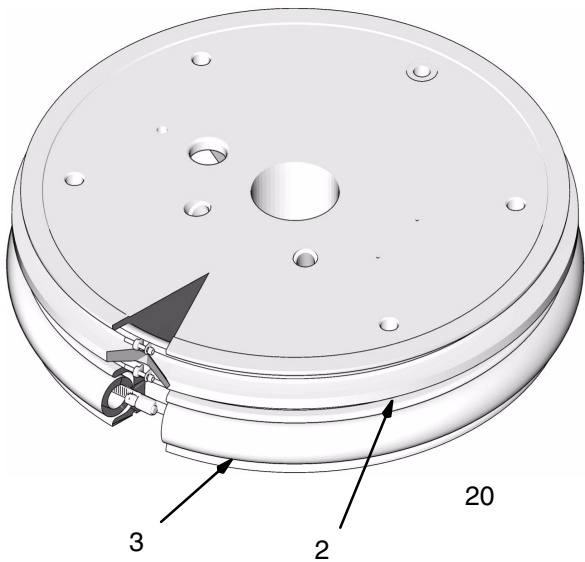
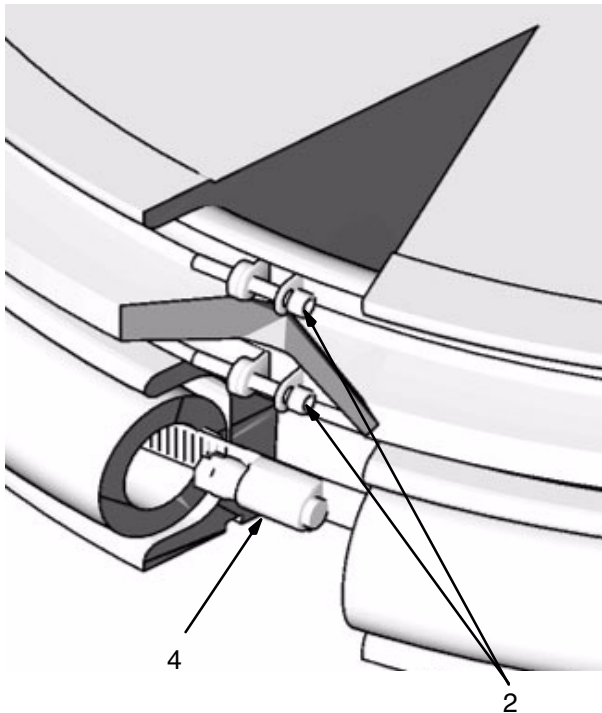


Ref. No.	Part No.	Description	Qty.
1		HOSE, follower upper	2
2		SPRING, retaining wiper	2

Parts

Model 253290, Tire Plate Seal

1 Lower Black EPDM/Chlorobutyl, SS Wire Braid Hose Wiper and 1 Upper White Silicone T-Wiper

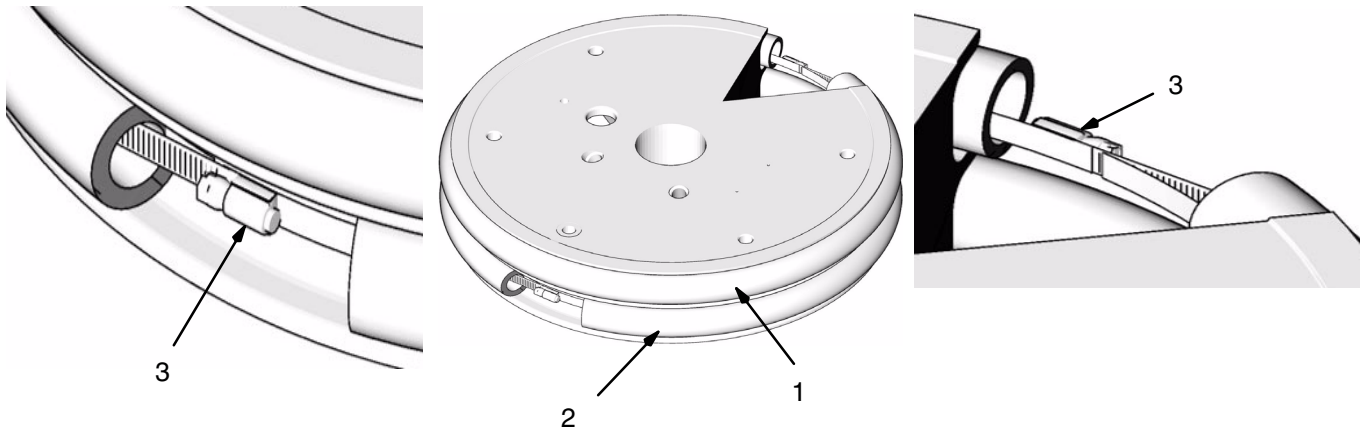


Ref. No.	Part No.	Description	Qty.
1		SEAL, T-wiper, 19.70 ID	1
2		BAND, wiper ring, upper	2
3		HOSE, follower upper 1"	1
4		CLAMP, kit, single seal	1

Parts

Model 253291

1 Lower Black EPDM / Chlorobutyl, SS wire braid Hose Wiper and 1 upper Green Silicone, Fiberglass Braid hose wiper

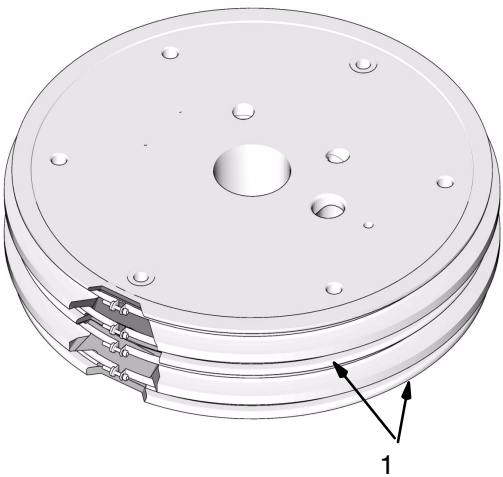
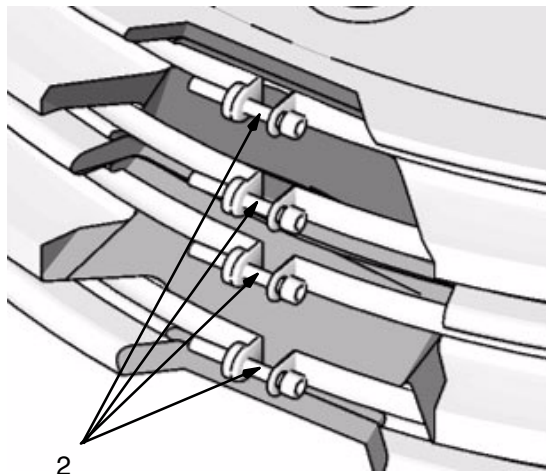


Ref. No.	Part No.	Description	Qty.
1		HOSE, follower upper	1
2		HOSE, follower upper 1"	2
3		CLAMP, tire	1

Parts

Model 253292, Tire Plate Seal

2 White Silicone F T-Wipers



Ref. No.	Part No.	Description	Qty.
1		SEAL, T-wiper, 19.70 ID	2
2		BAND, wiper ring	4

Technical Data

Model	Upper Wiper	Lower Wiper	Maximum Temperature
243279 / 253292	white silicone, tee style	white silicone, tee style	250° F 121° C
245668 / 253290	white silicone, tee style	black steam hose (chlorobutyl)	375° F 190° C
C31007 / 253291	green silicone hose	black steam hose (chlorobutyl)	400° F 204° C
234995 / 253289	EPDM hose	EPDM hose	400° F 204° C

Graco Standard Warranty

Graco warrants all equipment manufactured by Graco and bearing its name to be free from defects in material and workmanship on the date of sale to the original purchaser for use. With the exception of any special, extended, or limited warranty published by Graco, Graco will, for a period of twelve months from the date of sale, repair or replace any part of the equipment determined by Graco to be defective. This warranty applies only when the equipment is installed, operated and maintained in accordance with Graco's written recommendations.

This warranty does not cover, and Graco shall not be liable for general wear and tear, or any malfunction, damage or wear caused by faulty installation, misapplication, abrasion, corrosion, inadequate or improper maintenance, negligence, accident, tampering, or substitution of non-Graco component parts. Nor shall Graco be liable for malfunction, damage or wear caused by the incompatibility of Graco equipment with structures, accessories, equipment or materials not supplied by Graco, or the improper design, manufacture, installation, operation or maintenance of structures, accessories, equipment or materials not supplied by Graco.

This warranty is conditioned upon the prepaid return of the equipment claimed to be defective to an authorized Graco distributor for verification of the claimed defect. If the claimed defect is verified, Graco will repair or replace free of charge any defective parts. The equipment will be returned to the original purchaser transportation prepaid. If inspection of the equipment does not disclose any defect in material or workmanship, repairs will be made at a reasonable charge, which charges may include the costs of parts, labor, and transportation.

THIS WARRANTY IS EXCLUSIVE, AND IS IN LIEU OF ANY OTHER WARRANTIES, EXPRESS OR IMPLIED, INCLUDING BUT NOT LIMITED TO WARRANTY OF MERCHANTABILITY OR WARRANTY OF FITNESS FOR A PARTICULAR PURPOSE.

Graco's sole obligation and buyer's sole remedy for any breach of warranty shall be as set forth above. The buyer agrees that no other remedy (including, but not limited to, incidental or consequential damages for lost profits, lost sales, injury to person or property, or any other incidental or consequential loss) shall be available. Any action for breach of warranty must be brought within two (2) years of the date of sale.

Graco makes no warranty, and disclaims all implied warranties of merchantability and fitness for a particular purpose in connection with accessories, equipment, materials or components sold but not manufactured by Graco. These items sold, but not manufactured by Graco (such as electric motors, switches, hose, etc.), are subject to the warranty, if any, of their manufacturer. Graco will provide purchaser with reasonable assistance in making any claim for breach of these warranties.

In no event will Graco be liable for indirect, incidental, special or consequential damages resulting from Graco supplying equipment hereunder, or the furnishing, performance, or use of any products or other goods sold hereto, whether due to a breach of contract, breach of warranty, the negligence of Graco, or otherwise.

FOR GRACO CANADA CUSTOMERS

The parties acknowledge that they have required that the present document, as well as all documents, notices and legal proceedings entered into, given or instituted pursuant hereto or relating directly or indirectly hereto, be drawn up in English. Les parties reconnaissent avoir convenu que la rédaction du présente document sera en Anglais, ainsi que tous documents, avis et procédures judiciaires exécutés, donnés ou intentés à la suite de ou en rapport, directement ou indirectement, avec les procédures concernées.

Graco Information

TO PLACE AN ORDER, contact your Graco distributor, or call one of the following numbers to identify the distributor closest to you:

1-800-328-0211 Toll Free

612-623-6921

612-378-3505 Fax

*All written and visual data contained in this document reflects the latest product information available at the time of publication.
Graco reserves the right to make changes at any time without notice.*

Graco Headquarters: Minneapolis
International Offices: Belgium, China, Korea, Japan

www.graco.com

PRINTED IN USA 309196 06/2002 Revised 05/2006