



This manual contains important warnings and information.
READ AND KEEP FOR REFERENCE.

INSTRUCTIONS

Kit, Gauge, Airless Sprayer:

190ES™, 395/455/495ST PRO™

**Airless Paint Sprayers
(Stand Mount)**

3000 psi (207 bar, 20.7 MPa) Maximum Working Pressure

Model 243304, Series A

Pressure Relief Procedure

WARNING



INJECTION HAZARD

The system pressure must be manually relieved to prevent the system from starting or spraying accidentally. Fluid under high pressure can be injected through the skin and cause serious injury. To reduce the risk of an injury from injection, splashing fluid, or moving parts, follow the **Pressure Relief Procedure** whenever you:

- are instructed to relieve the pressure,
- stop spraying,
- check or service any of the system equipment,
- install or clean the spray tip.

1. Engage gun safety latch.
2. Turn ON/OFF switch to OFF.
3. Turn pressure control knob to lowest setting.
4. Unplug power supply cord.
5. Disengage gun safety latch. Hold metal part of gun firmly to grounded metal pail. Trigger gun to relieve pressure.
6. Engage gun safety latch.
7. Open pressure drain valve. Leave pressure drain valve open until ready to spray again.

If you suspect that the spray tip or hose is completely clogged or that pressure has not been fully relieved after following the steps above, VERY SLOWLY loosen the tip guard retaining nut or hose end coupling and relieve pressure gradually, then loosen completely. Now clear the tip or hose obstruction.

Removal

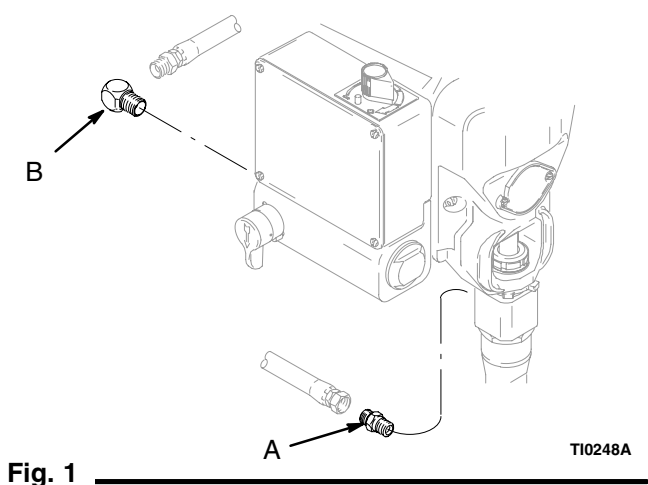


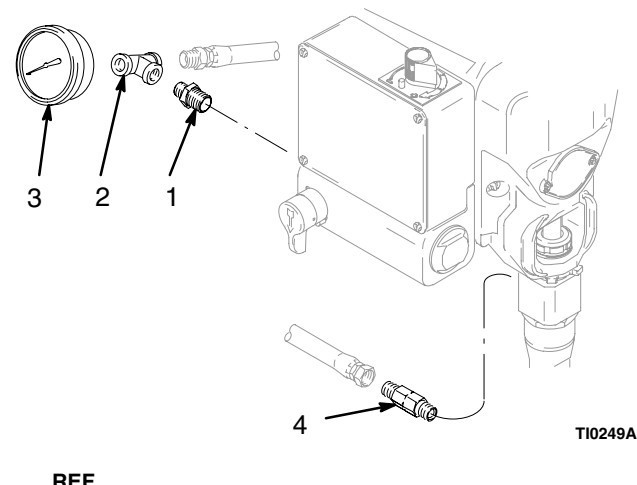
Fig. 1

1. Follow **Pressure Relief Procedure** on page 1.
2. Fig. 1. Disconnect fluid hose from pump nipple (A).
3. Remove pump nipple (A) from pump.
4. Remove fluid hose from fluid filter elbow (B).
5. Remove fluid filter elbow (B) from fluid filter.

Maintenance

Gauge can not be repaired; replace if damaged.

Installation



REF NO.	PART NO.	DESCRIPTION	QTY
1	157350	ADAPTER, 3/8 npt x 1/4 npt	1
2	204984	TEE, pipe	1
3	115523	GAUGE, pressure, fluid	1
4	192644	NIPPLE, long	1
5	119400*	SEALANT, pipe (not shown)	3

Fig. 2

1. Fig. 2. Apply pipe sealant to 3/8 in. thread on adapter (1) and screw into fluid filter.
2. Apply pipe sealant to 1/4 in. thread on adapter (1) and screw pipe tee (2) onto adapter.
3. Apply pipe sealant to pressure gauge (3) and screw onto pipe tee (2).
4. Apply pipe sealant to 1/4 in. ferrule end of hose and screw onto pipe tee (2).
5. Apply pipe sealant to long nipple (4) and screw into pump.
6. Apply pipe sealant to other end of long nipple (4) and screw swivel end of hose onto long nipple.

Graco Phone Number

TO PLACE AN ORDER, contact your Graco distributor, or call this number to identify the distributor closest to you: **1-800-690-2894 Toll Free**.

All written and visual data contained in this document reflects the latest product information available at the time of publication. Graco reserves the right to make changes at any time without notice.

Sales Offices: Minneapolis
International Offices: Belgium, Korea, Hong Kong, Japan

GRACO INC. P.O. BOX 1441 MINNEAPOLIS, MN 55440-1441
<http://www.graco.com>

PRINTED IN USA 309143 4/2000, Revised 10/2004