



INSTRUCTIONS

This manual contains important warnings and information.  
**READ AND KEEP FOR REFERENCE.**

First choice when quality counts.™

FOR ALPHA™ PLUS AA SPRAY GUN

## Ruby Needle Kits

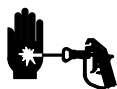
**Part No. 243588 Replacement Kit**

For replacement of 1/8 in. ball needle assembly

## Installation

### Disassembly

#### ⚠ WARNING



#### INJECTION HAZARD

To reduce the risk of a fluid injection injury, follow the **Pressure Relief Procedure** in gun manual 309117 before checking or servicing any of the system equipment and whenever you are instructed to relieve pressure.

1. Relieve the pressure.
2. Disassemble the gun as explained in the gun manual 309117. Discard the old needle assembly (12) and the seat gasket (12b).

### Reassembly

1. Install the new ruby needle assembly (12) and the new seat gasket (12b). See the drawing on the back of this sheet.

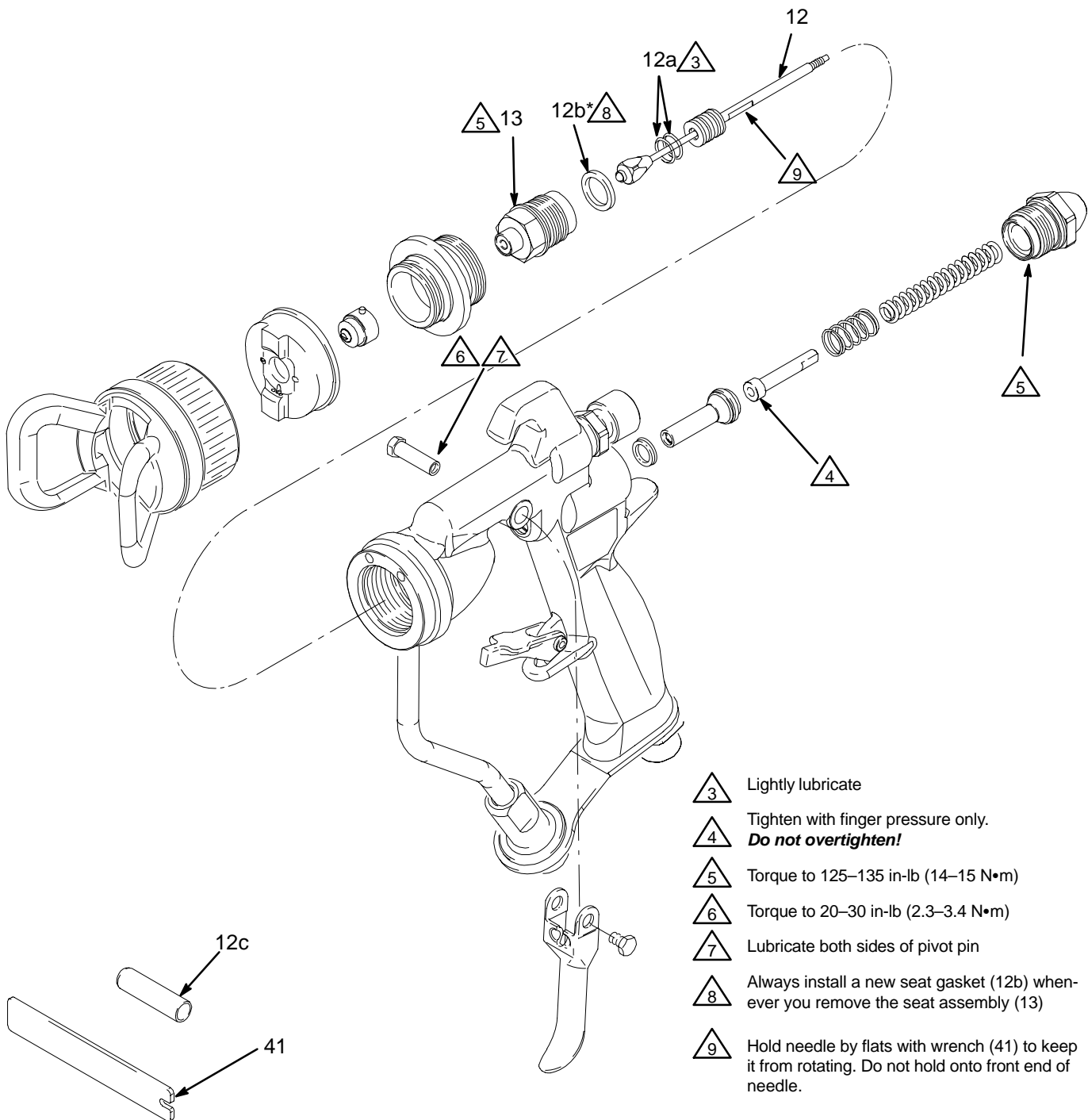
**NOTE:** Always install a new seat gasket (12b) whenever you replace the seat assembly (13).

2. Reassemble the remaining gun parts as explained in the gun manual 309117.

### Parts List

Ref. No.	Part No.	Description	Qty.
12	243588	KIT, needle; ruby includes items 12a through 12c	1
12a	111450	•O-RING	2
12b	115134	•GASKET, seat; acetal	1
12c	196140	•TOOL, repair, packing	1
13	243564	SEAT ASSEMBLY	1
41	196319	WRENCH, needle	

# Installation



T10440

*All written and visual data contained in this document reflects the latest product information available at the time of publication. Graco reserves the right to make changes at any time without notice.*

**Sales Offices:** Minneapolis, Detroit  
**International Offices:** Belgium, Korea, Hong Kong, Japan

**GRACO INC. P.O. BOX 1441 MINNEAPOLIS, MN 55440-1441**

**www.graco.com**

PRINTED IN U.S.A. 309140 June 2000 Revised July 2000