

# Installation Instructions

309123 Rev.D



INSTRUCTIONS

For detailed sprayer information and warnings, see Operating Instructions manual 309255 (included with MAGNUM sprayers).

This manual contains kit installation instructions only.

## Motor/Drive Housing and Motor Fan Replacement Kits for **MAGNUM**<sup>™</sup> XR Series Airless Sprayers

XR Motor/Drive Housing Replacement Kits: 245063, 245667

XR Motor Fan Replacement Kit 243231

XR Motor Cover Replacement Kit 245064

To find your local Graco/MAGNUM authorized service center

- Call us at 1-888-541-9788
- Visit our website at [www.graco.com](http://www.graco.com)

### **WARNING**

To reduce the risk of fluid injection or splashing in the eyes or on the skin, relieve all fluid pressure in the system before you install, remove, or replace any parts. See the **Pressure Relief Procedure** in the Operating Instructions manual 309255.

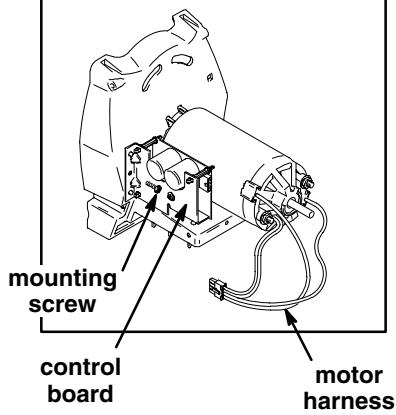


GRACO INC. P.O. BOX 1441 MINNEAPOLIS, MN 55440-1441

©COPYRIGHT 2000, GRACO INC.

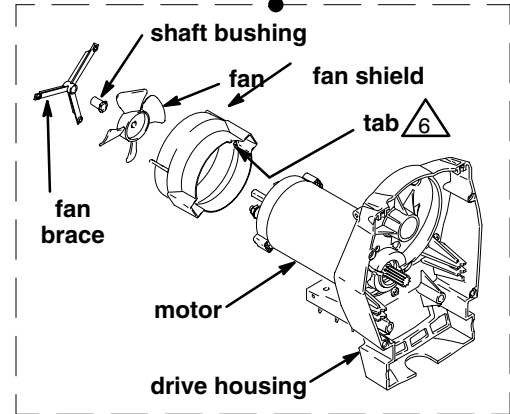
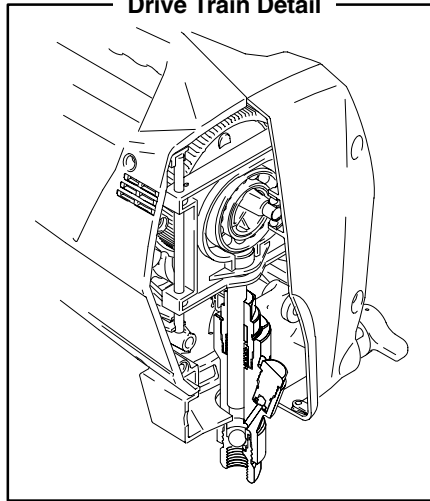
Graco Inc. is registered to I.S. EN ISO 9001

### Control Board Detail

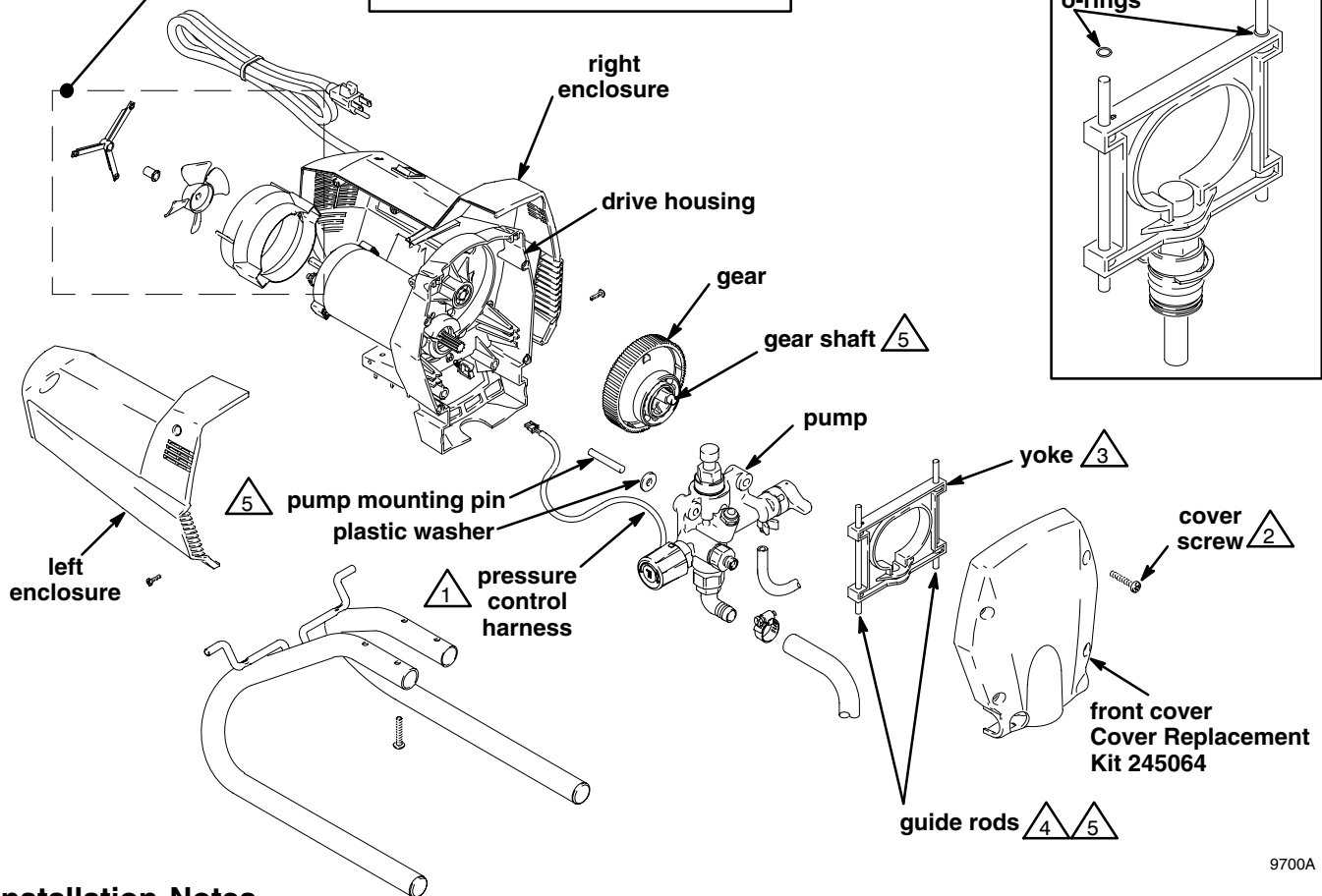


## XR Motor/Drive Housing Replacement Kits: 245063, 245667

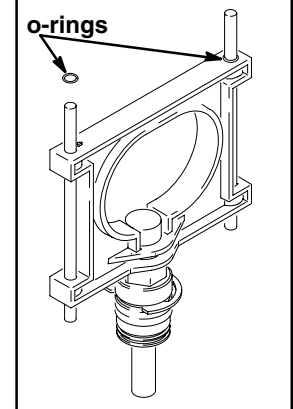
### Drive Train Detail



### XR Motor Fan Replacement Kit 243231



### Rod/Yoke Detail



## Installation Notes

To prevent misalignment, assemble sprayer tipped onto back of enclosure.

- 1 Take care to not pinch harness between pump and any part of drive housing or between front cover and drive housing.
- 2 For best cover alignment, tighten lower two cover screws first, then top two. Torque screws to 70 to 80 in-lb (8 to 9 N•m).
- 3 For yoke installation, eccentric bearing on gear must touch top of pump rod. Turn gear to move eccentric bearing to proper height.
- 4 If yoke guide rods drop out of position during assembly, damage will occur when cover is tightened. Always check position of guide rods before tightening cover.
- 5 Apply light coat of oil to both ends of the shafts.
- 6 Orient tab and "TOP" to top of fan shield.

9700A

# XR Motor/Drive Housing Replacement Kits: 245063, 245667

## Disassembly

1. **Unplug electrical cord, and relieve pressure.**
2. Remove the four cover screws and front cover.
3. Remove yoke and guide rods.
4. Disconnect pressure control harness from control board connector at back of drive housing. **Using fingernail or tip of small, flat-blade screwdriver, press tab on right side of connector to release.**
5. Remove pump and the two mounting pins from drive housing.
6. Remove gear.
7. Remove enclosure mounting screws from both side enclosures. Fully remove left enclosure from sprayer. Pull right enclosure away from drive housing. **Take care to not pull on the leads from the electrical cord and the Power switch.**
8. Disconnect motor harness from back of control board.
9. Remove screw that mounts control board, and remove control board from drive housing.
10. Carefully pull 3-legged fan brace from pegs on fan shield. Use rag or glove to protect your fingers, and pull fan off motor shaft.
11. Pull fan shield from motor. **Note how the motor leads are routed through the arches and slots of the fan shield.**
12. Remove stand or cart legs from drive housing.

## Installation

- Read all **Installation Notes** in service drawing on facing page.
  - To prevent misalignment, assemble sprayer tipped onto back of enclosure.
1. Install stand or cart legs on new drive housing.
  2. Carefully route the motor leads as you observed them in Step 11 of **Disassembly** (yellow wires above black wire).
  3. Install new fan shield on new motor. Orient tab and "TOP" to top of fan shield.
  4. Install new fan on motor shaft.
  5. Install shaft bushing on new motor shaft, and install new 3-legged fan brace in pegs on fan shield.
  6. Install control board on new drive housing, and tighten control board mounting screw. See **Control Board Detail** on facing page.
  7. Plug new motor harness into back of control board.
  8. Reinstall enclosures on sprayer, and install and tighten enclosure mounting screws.
  9. Install gear in new drive housing so teeth engage with drive pinion of motor.
  10. Route pressure control harness behind pump through retention clip, and connect to control board connector at back of drive housing (connect with tab to the right).
  11. Install pump on mounting pins. **Make sure the plastic washers are between the drive housing and the pump.**
  12. Install yoke with rod cap in slot of yoke, as shown in **Rod/Yoke Detail** on facing page.
  13. Check final assembly against **Drive Train Detail** on facing page.
  14. Install front cover and cover screws.

# XR Motor Fan Replacement Kit 243231

## Disassembly

1. **Unplug electrical cord, and relieve pressure.**
2. Remove enclosure mounting screws from right enclosure, and pull right enclosure away from drive housing. **Take care to not pull on the leads from the electrical cord and the Power switch.**
3. Carefully pull 3-legged fan brace from pegs on fan shield. Use rag or glove to protect your fingers, and pull fan off motor shaft.
4. Pull fan shield from motor. **Note how the motor leads are routed through the arches and slots of the fan shield.**

## Installation

1. Carefully route the motor leads as you observed them in Step 4 of **Disassembly** (yellow wires above black wire).
2. Install new fan shield on motor. Orient tab and "TOP" to top of fan shield.
3. Install new fan on motor shaft.
4. Install shaft bushing on motor shaft, and install new 3-legged fan brace in pegs on fan shield.
5. Reinstall enclosure on sprayer, and install and tighten enclosure mounting screws.

*All written and visual data contained in this document reflect the latest product information available at the time of publication.  
Graco reserves the right to make changes at any time without notice.*

**GRACO INC. P.O. BOX 1441 MINNEAPOLIS, MN 55440-1441**  
**[www.graco.com](http://www.graco.com)**