

INSTRUCTIONS



309111

Rev. A



This manual contains important
warnings and information.
READ AND KEEP FOR REFERENCE.

INSTRUCTIONS

*First choice when
quality counts.™*

Membrane Switch Repair Kit

Part No. 243552

Before Beginning

1. Write down the Informer setup parameters. They will be needed for reprogramming later. Refer to manual 309102 for further information.
2. Put on the grounding strap provided.

CAUTION

Wear the grounding strap provided with the kit to avoid shorting out the circuit board.

3. Follow the Pressure Relief Procedure at right.

Pressure Relief Procedure

WARNING

INJECTION HAZARD

The system pressure must be manually relieved to prevent the system from starting or spraying accidentally. Fluid under high pressure can be injected through the skin and cause serious injury. To reduce the risk of an injury from injection, splashing fluid, or moving parts, follow the **Pressure Relief Procedure** whenever you:

- are instructed to relieve the pressure,
- stop spraying,
- check or service any of the system equipment.

1. Turn off the fluid supply to the meter.
2. Shut off all electrical power to the fluid system.
3. Follow the Pressure Relief Procedure for your fluid system dispensing device.

GRACO INC. P.O. BOX 1441 MINNEAPOLIS, MN 55440-1441

©COPYRIGHT 2000, GRACO INC.
Graco Inc. is registered to I.S. EN ISO 9001

Remove the Battery

NOTE: Reference numbers in the text correspond to the numbers in the Informer manual 309102.

Remove the battery, using the following applicable procedure.

WARNING



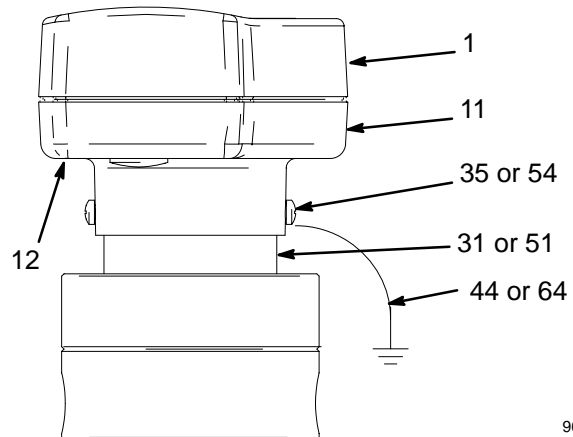
FIRE AND EXPLOSION HAZARD

To reduce the risk of fire or explosion:

- Do not remove or install the battery in a hazardous location.
- The internal and external ground wires for the display must be correctly connected.

• For a Display Assembly Mounted on the Meter

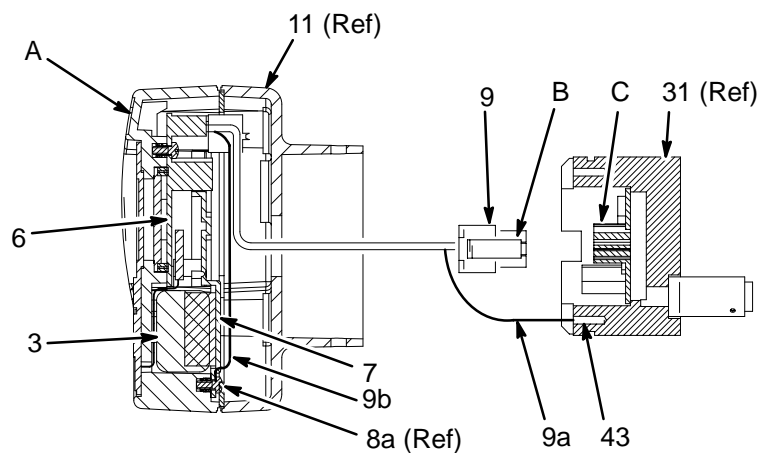
1. Remove the display mounting screws (35) and the external ground wire (44) from the sensor (31). Pull the sensor out of the lower housing (11). Refer to Fig. 1.



9633A

Fig. 1

2. Remove the screw (43) and disconnect the internal ground wire (9a) from the sensor (31). See Fig. 2.
3. Unplug the connector (9) from the sensor circuit board by pressing the connector latch (B), then pulling the connector off the receptacle (C).
4. Move the display assembly (A) to a non-hazardous location.
5. Remove the four screws (12) and remove the display assembly lower housing (11).
6. Remove the one screw (8) that secures the cover (7) and internal ground wire (9b) to the battery (3).



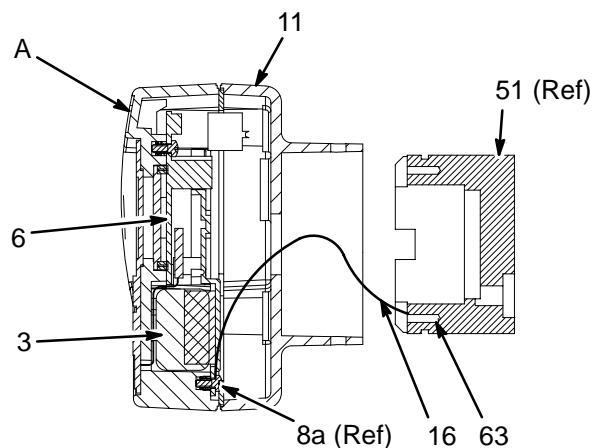
Display Assembly to Mount on Meter

9631A

Fig. 2

● For a Remotely Mounted Display Assembly

1. Remove the display mounting screws (54) and the external ground wire (64) from the adapter (51). Refer to Fig. 1.
2. Remove the screw (63) and disconnect the internal ground wire (16) from the adapter (51). Pull the adapter out of the lower housing (11). See Fig. 3.
3. Remove the four screws (12) and remove the display assembly lower housing (11).
4. Unplug the removeable terminal blocks from their receptacles (14, 15). See Fig. 4.
5. Move the display assembly (A) to a non-hazardous location.
6. Remove the one screw (8) that secures the cover (7) and internal ground wire (16) to the battery (3).



Remote Display Assembly

9631A

Fig. 3

Complete the Installation

1. Remove the remaining four screws (8) holding the circuit board cover (7) and take off the cover. Refer to Fig. 4.
2. Disconnect the battery wire.
3. Remove the last circuit board mounting screw (8b).
4. Remove the membrane switch connector (2a).
5. Take note of the orientation of the board to the liquid crystal display (LCD) (4).
6. Pull the circuit board (6) out of the upper housing (1).

NOTE: The LCD and pads may stick to the circuit board.

7. Remove the LCD (4) and its conductive pads (4a).
8. Peel the old membrane switch (2) off the upper housing (1). Clean any remaining adhesive from the housing, using isopropyl alcohol.
9. Remove the protective film from both sides and install the clear window support (2b) in the upper housing recess.
10. Remove the switch backing and install the connector through the slot in the housing.
11. Center the membrane switch (2) in the housing recess and press down firmly.
12. Install the new LCD (4) and pads (4a) in the upper housing (1), being sure to keep the same orientation.
13. Install the circuit board.
14. Reattach the membrane switch connector (2a), battery wire, and circuit board cover (7) and screws (8).
15. Reinstall the battery (3), in the reverse order of removal.
16. Reprogram the setup parameters, which were recorded under **Before Beginning** on page 1.

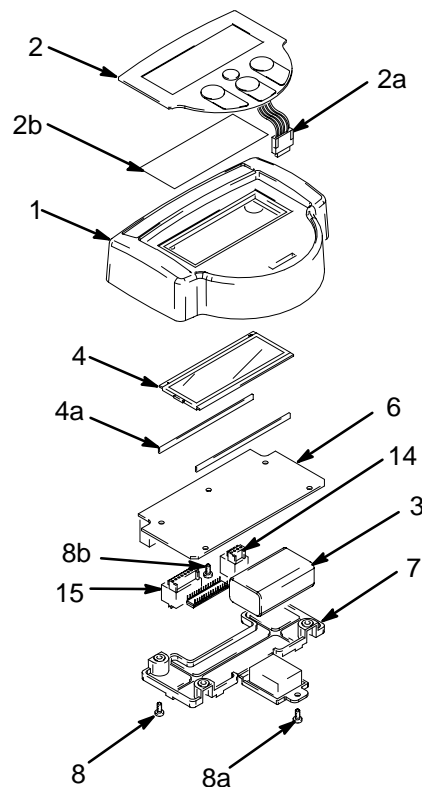


Fig. 4

T10303

Graco Standard Warranty

Graco warrants all equipment manufactured by Graco and bearing its name to be free from defects in material and workmanship on the date of sale by an authorized Graco distributor to the original purchaser for use. With the exception of any special, extended, or limited warranty published by Graco, Graco will, for a period of twelve months from the date of sale, repair or replace any part of the equipment determined by Graco to be defective. This warranty applies only when the equipment is installed, operated and maintained in accordance with Graco's written recommendations.

This warranty does not cover, and Graco shall not be liable for general wear and tear, or any malfunction, damage or wear caused by faulty installation, misapplication, abrasion, corrosion, inadequate or improper maintenance, negligence, accident, tampering, or substitution of non-Graco component parts. Nor shall Graco be liable for malfunction, damage or wear caused by the incompatibility of Graco equipment with structures, accessories, equipment or materials not supplied by Graco, or the improper design, manufacture, installation, operation or maintenance of structures, accessories, equipment or materials not supplied by Graco.

This warranty is conditioned upon the prepaid return of the equipment claimed to be defective to an authorized Graco distributor for verification of the claimed defect. If the claimed defect is verified, Graco will repair or replace free of charge any defective parts. The equipment will be returned to the original purchaser transportation prepaid. If inspection of the equipment does not disclose any defect in material or workmanship, repairs will be made at a reasonable charge, which charges may include the costs of parts, labor, and transportation.

THIS WARRANTY IS EXCLUSIVE, AND IS IN LIEU OF ANY OTHER WARRANTIES, EXPRESS OR IMPLIED, INCLUDING BUT NOT LIMITED TO WARRANTY OF MERCHANTABILITY OR WARRANTY OF FITNESS FOR A PARTICULAR PURPOSE.

Graco's sole obligation and buyer's sole remedy for any breach of warranty shall be as set forth above. The buyer agrees that no other remedy (including, but not limited to, incidental or consequential damages for lost profits, lost sales, injury to person or property, or any other incidental or consequential loss) shall be available. Any action for breach of warranty must be brought within two (2) years of the date of sale.

Graco makes no warranty, and disclaims all implied warranties of merchantability and fitness for a particular purpose in connection with accessories, equipment, materials or components sold but not manufactured by Graco. These items sold, but not manufactured by Graco (such as electric motors, switches, hose, etc.), are subject to the warranty, if any, of their manufacturer. Graco will provide purchaser with reasonable assistance in making any claim for breach of these warranties.

In no event will Graco be liable for indirect, incidental, special or consequential damages resulting from Graco supplying equipment hereunder, or the furnishing, performance, or use of any products or other goods sold hereto, whether due to a breach of contract, breach of warranty, the negligence of Graco, or otherwise.

FOR GRACO CANADA CUSTOMERS

The parties acknowledge that they have required that the present document, as well as all documents, notices and legal proceedings entered into, given or instituted pursuant hereto or relating directly or indirectly hereto, be drawn up in English. Les parties reconnaissent avoir convenu que la rédaction du présente document sera en Anglais, ainsi que tous documents, avis et procédures judiciaires exécutés, donnés ou intentés à la suite de ou en rapport, directement ou indirectement, avec les procédures concernées.

Graco Phone Number

TO PLACE AN ORDER, contact your Graco distributor, or call this number to identify the distributor closest to you:
1-800-367-4023 Toll Free

*All written and visual data contained in this document reflects the latest product information available at the time of publication.
Graco reserves the right to make changes at any time without notice.*

Sales Offices: Minneapolis, Detroit
International Offices: Belgium, Korea, Hong Kong, Japan

GRACO INC. P.O. BOX 1441 MINNEAPOLIS, MN 55440-1441
www.graco.com

PRINTED IN USA 309111 March 2000. May 2000