

# INSTRUCTIONS-PARTS LIST



# 309094

Rev. C



This manual contains important warnings and information.  
**READ AND KEEP FOR REFERENCE.**

INSTRUCTIONS

First choice when  
quality counts.™

## President Muffler Accessory Kit 243421

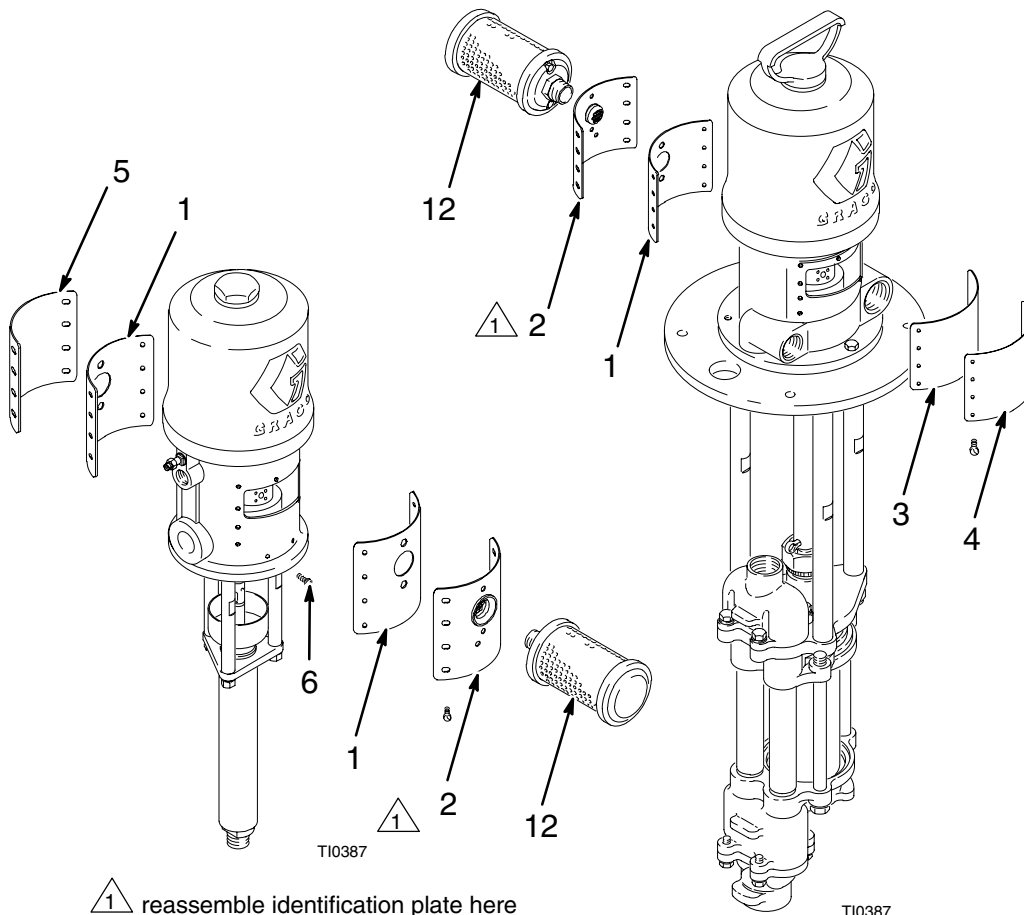
### ⚠ WARNING



**PRESSURIZED EQUIPMENT HAZARD**  
Follow the pressure relief procedure  
before installing the muffler kit to prevent  
the pump from starting.

No	Part No	Description	Qty
1	195938	Gasket, Muffler	2
2	243420	Plate, Exhaust	2
3	196377	Gasket, Muffler	1
4	196376	Plate, Exhaust, Muffler	1
5	196197	Plate, Exhaust, Muffler	1
6	110037	Screw, Panhead, Selftapping	4
12	102656	Muffler	1

See assembly instructions on back



GRACO INC. P.O. BOX 1441 MINNEAPOLIS, MN 55440-1441

© COPYRIGHT 1999, GRACO INC.

Graco Inc. is registered to I.S. EN ISO 9001

## Assembly

1. Follow the pressure relief procedure detailed in the pump, motor or lower instruction manual, or call your Graco Distributor. Following the pressure relief procedure will prevent the pump from starting.
2. For 1-1/2:1, 2:1, 3:1 President High-Flo pumps and 3:1, 4:1 and 28:1 President 2 ball pumps, use plates (2) and (4) and gaskets (1) and (3). For all other motors, use plates (2) and (5) and gaskets (1). Discard extra plate and gasket.
3. Attach gasket (1) to plates (2) and (5), attach gasket (3) to plate (4) as required.
4. Remove the 22 existing screws and the two plates from the motor and set aside.
5. Assemble the plate (2) to the motor with 10 of the existing fasteners.
6. Assemble the plate (4) or (5), depending on the air motor, with 10 of the existing fasteners.
7. Apply thread sealant to the muffler (12) and assemble the muffler (12) to plate (2).
8. Assemble the four self-tapping screws (6) into motor as shown. Not required on 1-1/2:1, 2:1, 3:1 President High-Flo pumps and 3:1, 4:1. and 28:1 President 2 ball pumps.
9. Remove identification plate from the old motor plate and reassemble the identification plate to the new muffler plate using the two remaining screws.

# Graco Phone Number

**TO PLACE AN ORDER**, contact your Graco distributor, or call this number to identify the distributor closest to you:  
**1-800-367-4023 Toll Free**

*All written and visual data contained in this document reflects the latest product information available at the time of publication.  
Graco reserves the right to make changes at any time without notice.*

**Sales Offices:** Minneapolis, Detroit  
**Foreign Offices:** Belgium, Korea, Hong Kong, Japan

**GRACO INC. P.O. BOX 1441 MINNEAPOLIS, MN 55440-1441**  
**[www.graco.com](http://www.graco.com)**

PRINTED IN USA 309094 December 1999, Revised May 2000