



INSTRUCTIONS

This manual contains important warnings and information.  
**READ AND KEEP FOR REFERENCE.**

*First choice when quality counts.™*

FOR TWO COMPONENT OR HOT POTTED FLUIDS

## High Viscosity Suction Kits

### Part No. 241831 Suction Kit

For 45:1 King® and 63:1 King® Pumps

### Part No. 241832 Suction Kit

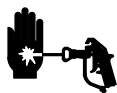
For Dura-Flo™ 900 Displacement Pumps

### Part No. 243186 Suction Kit

For Dura-Flo™ 750 Displacement Pumps

### Disassembly

#### ⚠ WARNING



#### INJECTION HAZARD

To reduce the risk of a fluid injection injury, follow the **Pressure Relief Procedure** in your separate pump manual before checking or servicing any of the system equipment and whenever you are instructed to relieve pressure.

1. Flush the equipment.
2. Relieve the pressure.
3. Refer to Fig. 1. Remove the suction tube (A), hose (B), bushing (C) and intake elbow (D).
4. On Dura-Flo pumps only, remove the four screws (E), nuts (F), and lockwashers (G) attaching the pump to the cart platform.

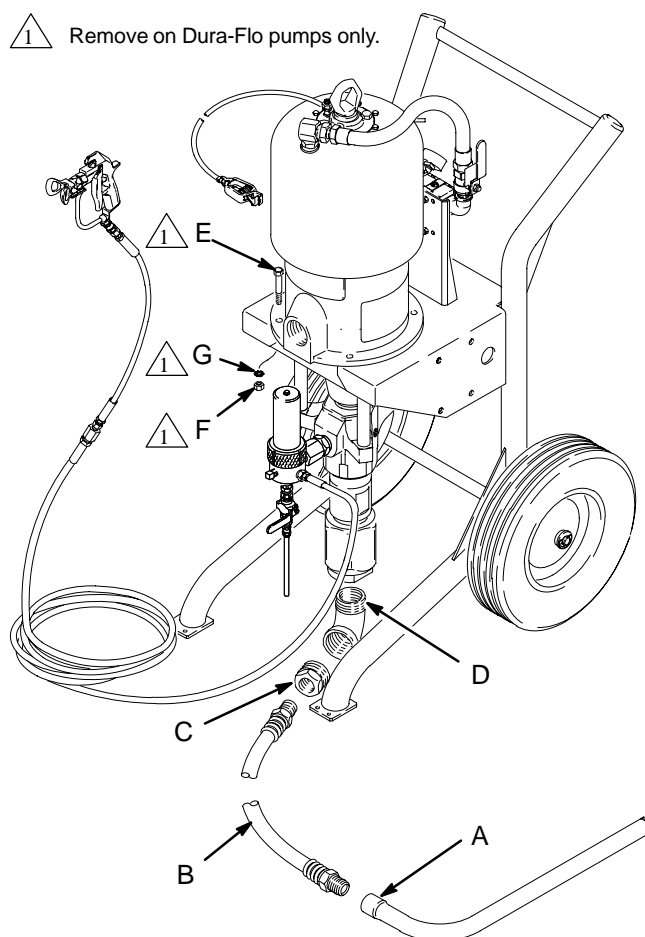




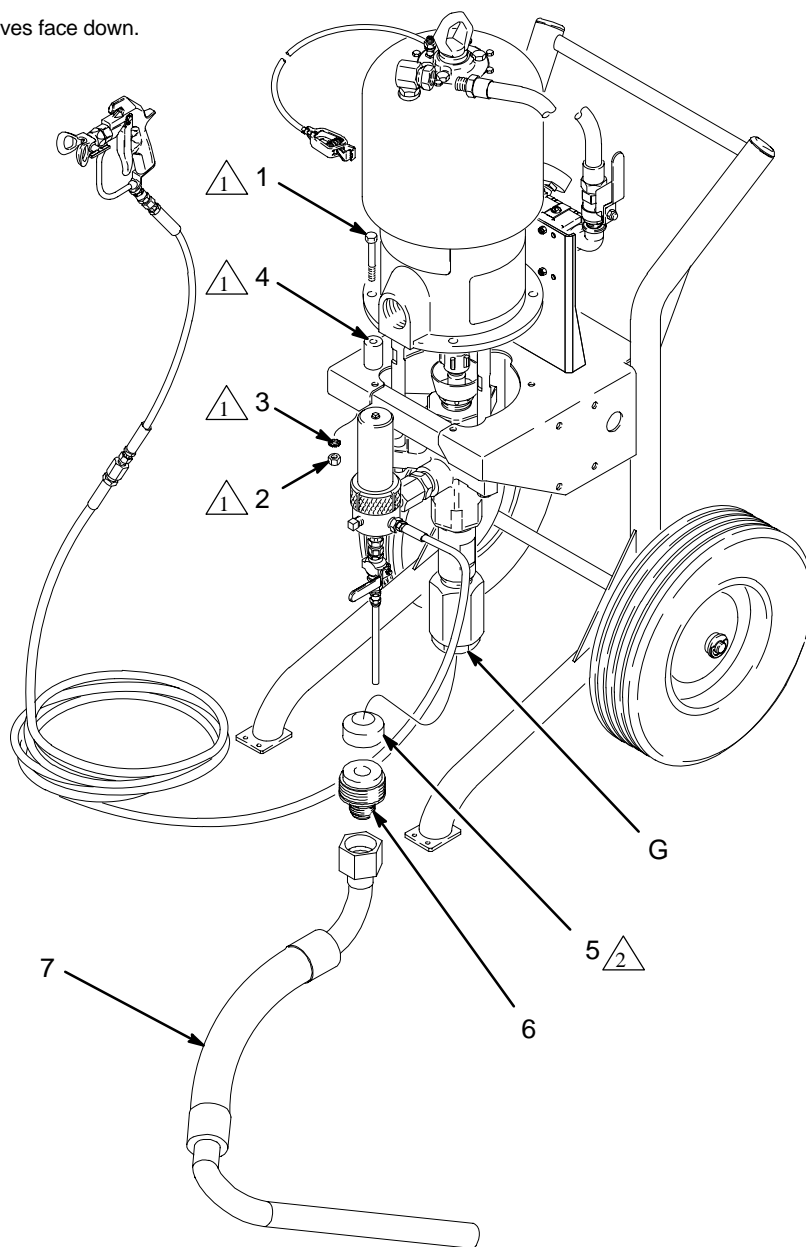
Fig. 1

9339A

## Assembly

1. Refer to Fig. 2. On Dura-Flo pumps only, install the four spacers (4) between the air motor base and the cart platform. Secure with the four screws (1), lockwashers (3), and nuts (2).
2. On all models, install the PTFE spacer (5) into the pump intake (G) so the beveled end is facing up into the pump and the grooves are facing down.
3. Screw the adapter (6) into the pump intake (G). Screw the suction hose (7) onto the adapter. Place the tube end of the hose in the material supply.
4. Return the pump to service.

-  Used on Dura-Flo pumps only.
-  Beveled end up, grooves face down.



9340A

Fig. 2

# Parts

## Part No. 241831 Suction Kit

For 45:1 King® and 63:1 King® Pumps

Ref. No.	Part No.	Description	Qty.
5	195294	SPACER; PTFE	1
6	195298	ADAPTER; 1-1/2 npt(m) x 1-5/16-12 2A unc (JIC)	1
7	115407	HOSE, suction; nylon; stainless steel tube; 1-5/16-12 2B unc (JIC)	1

## Part No. 241832 Suction Kit

For Dura-Flo 900 Displacement Pumps

Ref. No.	Part No.	Description	Qty.
1	115348	SCREW, cap, hex hd; 3/8-16	4
2	100131	NUT, hex; 3/8-16	4
3	100133	WASHER, lock; 3/8	4
4	195296	SPACER, air motor	4
5	195295	SPACER; PTFE	1
6	195297	ADAPTER; 2 npt(m) x 1-5/16-12 2A unc (JIC)	1
7	115407	HOSE, suction; nylon; stainless steel tube; 1-5/16-12 2B unc (JIC)	1

## Part No. 243186 Suction Kit

For Dura-Flo™ 750 Displacement Pumps

Ref. No.	Part No.	Description	Qty.
1	115348	SCREW, cap, hex hd; 3/8-16	4
2	100131	NUT, hex; 3/8-16	4
3	100133	WASHER, lock; 3/8	4
4	195296	SPACER, air motor	4
5	195294	SPACER; PTFE	1
6	195298	ADAPTER; 1-1/2 npt(m) x 1-5/16-12 2A unc (JIC)	1
7	115407	HOSE, suction; nylon; stainless steel tube; 1-5/16-12 2B unc (JIC)	1

# Graco Standard Warranty

Graco warrants all equipment manufactured by Graco and bearing its name to be free from defects in material and workmanship on the date of sale by an authorized Graco distributor to the original purchaser for use. With the exception of any special, extended, or limited warranty published by Graco, Graco will, for a period of twelve months from the date of sale, repair or replace any part of the equipment determined by Graco to be defective. This warranty applies only when the equipment is installed, operated and maintained in accordance with Graco's written recommendations.

This warranty does not cover, and Graco shall not be liable for general wear and tear, or any malfunction, damage or wear caused by faulty installation, misapplication, abrasion, corrosion, inadequate or improper maintenance, negligence, accident, tampering, or substitution of non-Graco component parts. Nor shall Graco be liable for malfunction, damage or wear caused by the incompatibility of Graco equipment with structures, accessories, equipment or materials not supplied by Graco, or the improper design, manufacture, installation, operation or maintenance of structures, accessories, equipment or materials not supplied by Graco.

This warranty is conditioned upon the prepaid return of the equipment claimed to be defective to an authorized Graco distributor for verification of the claimed defect. If the claimed defect is verified, Graco will repair or replace free of charge any defective parts. The equipment will be returned to the original purchaser transportation prepaid. If inspection of the equipment does not disclose any defect in material or workmanship, repairs will be made at a reasonable charge, which charges may include the costs of parts, labor, and transportation.

**THIS WARRANTY IS EXCLUSIVE, AND IS IN LIEU OF ANY OTHER WARRANTIES, EXPRESS OR IMPLIED, INCLUDING BUT NOT LIMITED TO WARRANTY OF MERCHANTABILITY OR WARRANTY OF FITNESS FOR A PARTICULAR PURPOSE.**

Graco's sole obligation and buyer's sole remedy for any breach of warranty shall be as set forth above. The buyer agrees that no other remedy (including, but not limited to, incidental or consequential damages for lost profits, lost sales, injury to person or property, or any other incidental or consequential loss) shall be available. Any action for breach of warranty must be brought within two (2) years of the date of sale.

Graco makes no warranty, and disclaims all implied warranties of merchantability and fitness for a particular purpose in connection with accessories, equipment, materials or components sold but not manufactured by Graco. These items sold, but not manufactured by Graco (such as electric motors, switches, hose, etc.), are subject to the warranty, if any, of their manufacturer. Graco will provide purchaser with reasonable assistance in making any claim for breach of these warranties.

In no event will Graco be liable for indirect, incidental, special or consequential damages resulting from Graco supplying equipment hereunder, or the furnishing, performance, or use of any products or other goods sold hereto, whether due to a breach of contract, breach of warranty, the negligence of Graco, or otherwise.

## **FOR GRACO CANADA CUSTOMERS**

The parties acknowledge that they have required that the present document, as well as all documents, notices and legal proceedings entered into, given or instituted pursuant hereto or relating directly or indirectly hereto, be drawn up in English. Les parties reconnaissent avoir convenu que la rédaction du présente document sera en Anglais, ainsi que tous documents, avis et procédures judiciaires exécutés, donnés ou intentés à la suite de ou en rapport, directement ou indirectement, avec les procédures concernées.

# Graco Phone Number

**TO PLACE AN ORDER**, contact your Graco distributor, or call this number to identify the distributor closest to you:  
**1-800-367-4023 Toll Free**

*All written and visual data contained in this document reflects the latest product information available at the time of publication.  
Graco reserves the right to make changes at any time without notice.*

**Sales Offices:** Minneapolis, Detroit  
**International Offices:** Belgium, Korea, Hong Kong, Japan

**GRACO INC. P.O. BOX 1441 MINNEAPOLIS, MN 55440-1441**  
**[www.graco.com](http://www.graco.com)**

PRINTED IN U.S.A. 309006 July 1999 Revised August 2000