



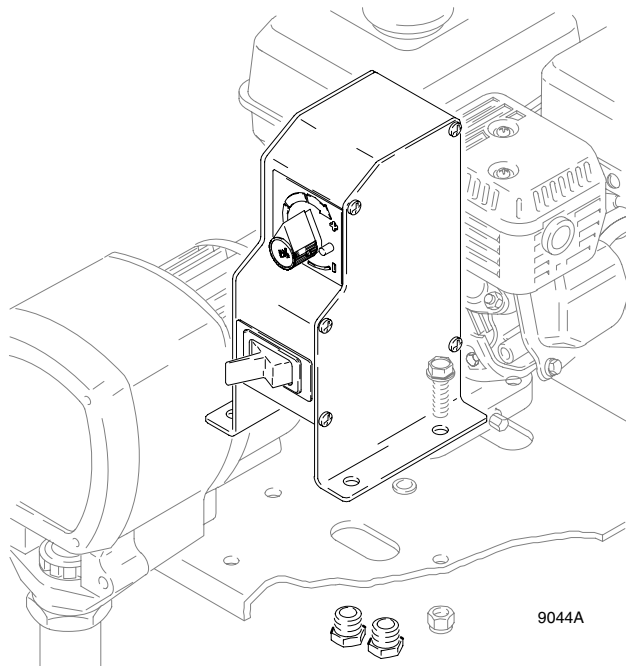
This manual contains important warnings and information.
READ AND KEEP FOR REFERENCE.

INSTRUCTIONS

Replacement Pressure Control Kit for GM3500™ and GM5000™ LineLazer™

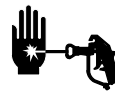
3000 psi (21.0 MPa, 210 bar)
Maximum Working Pressure

Model 240922



Pressure Relief Procedure

WARNING



INJECTION HAZARD

The system pressure must be manually relieved to prevent the system from starting or spraying accidentally. Fluid under high pressure can be injected through the skin and cause serious injury. To reduce the risk of an injury from injection, splashing fluid, or moving parts, follow the Pressure Relief Procedure whenever you

- Are instructed to relieve the pressure
- Stop spraying
- Check or service any of the system equipment
- Install or clean the spray tip

1. Engage the gun safety latch.
2. Turn the engine ON/OFF switch to OFF.
3. Turn the pressure control switch to OFF.
4. Disengage the gun safety latch. Hold a metal part of the gun firmly to a grounded metal pail. Trigger the gun to relieve pressure.
5. Engage the gun safety latch.
6. Open the pressure drain valve. Leave it open until you are ready to spray again.

*If you suspect that the spray tip or hose is completely clogged or that pressure has not been fully relieved after following the steps above, **very slowly** loosen the tip guard retaining nut or hose end coupling, and relieve pressure gradually. Then loosen completely. Then clear the tip or hose obstruction.*

GRACO INC. P.O. BOX 1441 MINNEAPOLIS, MN 55440-1441


©COPYRIGHT 1999, GRACO INC.

Graco Inc. is registered to I.S. EN ISO 9001

Installation

Removing the Old Pressure Control

See Fig. 1

1.  Relieve the pressure.
See page 1.
2. Disconnect both hoses (A) from the bottom of the existing pressure control (B). Note the original location of each hose to be sure you connect them correctly.
3. Disconnect the color-coded pressure control wires (shown at location C). Remove the four mounting bolts (D), and remove the pressure control.

Installing the New Pressure Control

See Fig. 1

1. Align the bolt holes of the new pressure control with the bolt holes on the mounting plate (E), and run the mounting bolts (D) through the bolt holes. At the bolt hole nearest the grounding symbol (G), use the long bolt and the washer and nut to attach the grounding chain (F). Tighten all four mounting nuts (H).
2. Connect the color-coded wires to the new pressure control, and connect the hoses to the union swivels (25 in the Parts Drawing on page 3). The orientation of the hose connections is the same as it was on the old pressure control.

NOTE: See page 3. If you have a GM3500, apply pipe sealant (27) to the male threads of the reducer fittings (26), and thread the reducer fittings into the union swivels (25) before you connect the hoses. The pipe sealant and reducer fittings are supplied with the new Pressure Control Kit.

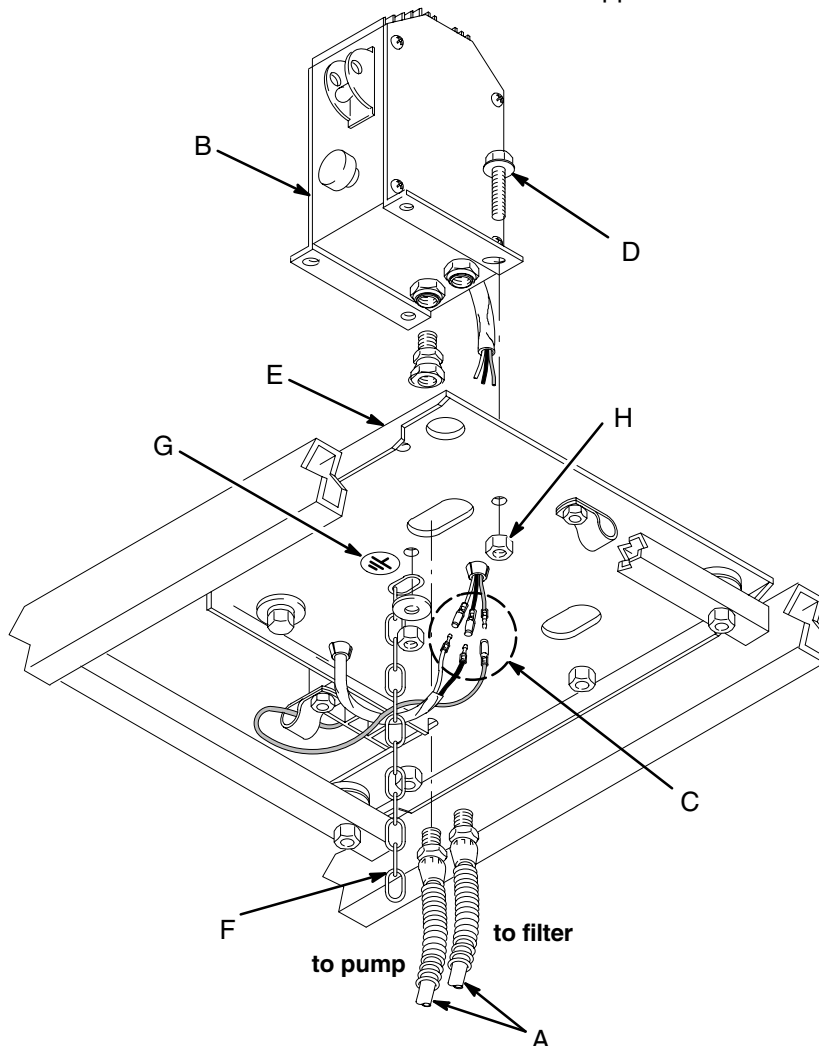
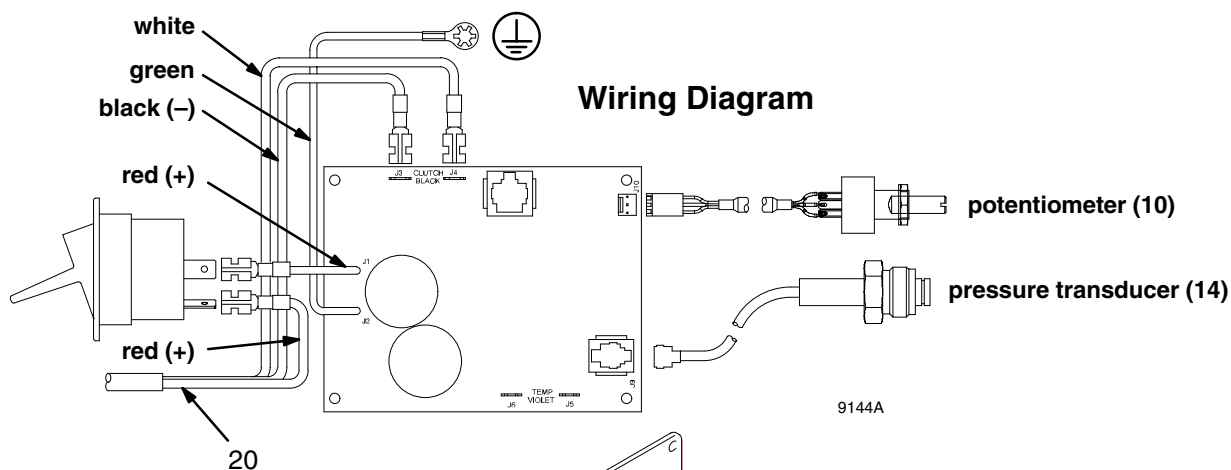


Fig. 1

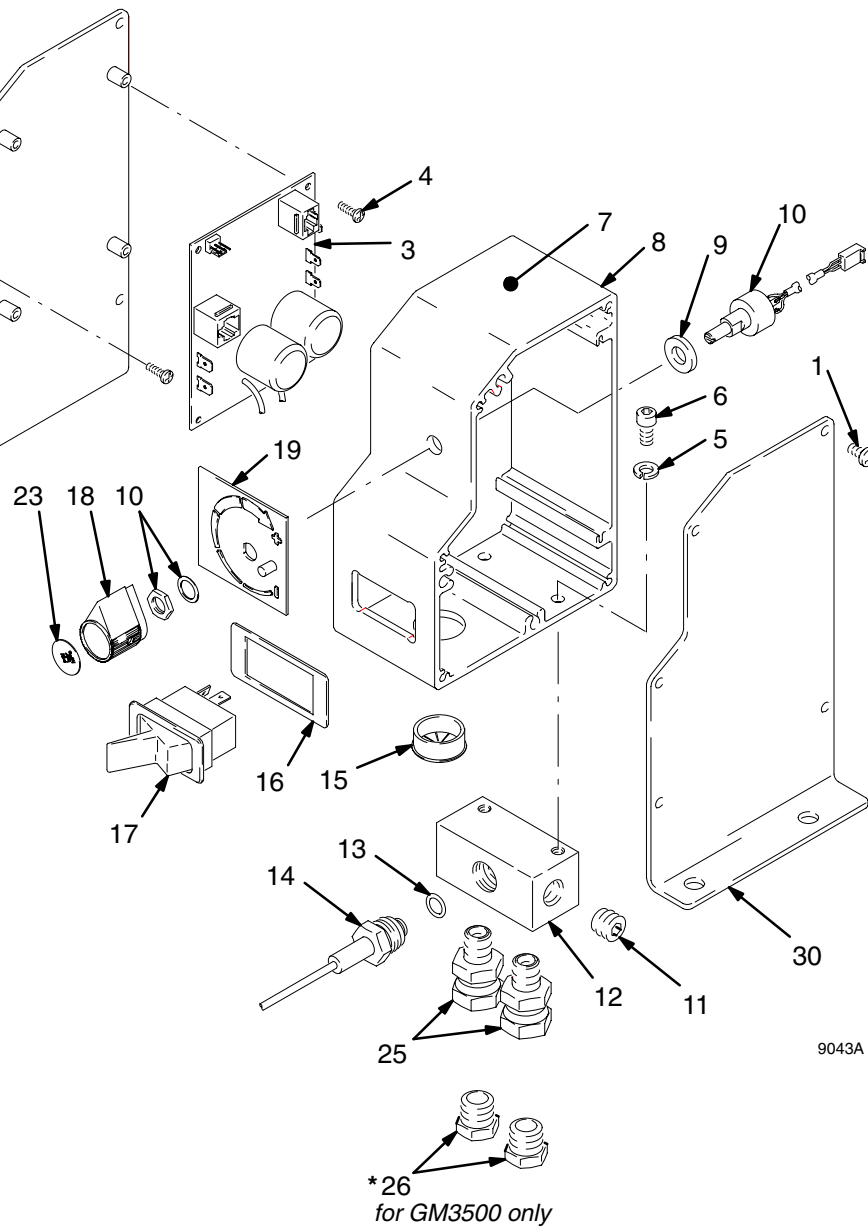
0032

Parts



Pressure Control Kit 240922

Ref No.	Part No.	Description	Qty
1	114392	SCREW, thread forming	10
2	194409	PLATE, control	1
3	241543	BOARD, control	1
4	111839	SCREW, machine, pan hd, 6-32 x 1/2 in.	5
5	100016	WASHER, lock	2
6	110754	SCREW, cap	2
7	192839	LABEL, caution	1
8	193688	HOUSING, control box	1
9	193657	GASKET, potentiometer	1
10	241443	KIT, potentiometer	1
11	100721	PLUG, pipe	1
12	193685	MANIFOLD	1
13	111457	PACKING, o-ring	1
14	240047	TRANSDUCER, pressure	1
15	113268	BUSHING, universal, snap-in	1
16	193052	PLATE, instruction	1
17	114277	SWITCH, rocker, (dpst)	1
18	114273	KNOB, potentiometer	1
19	192831	PLATE, instruction	1
20	220978	CONDUCTOR, electrical	1
23	193072	LABEL, control	1
24	114958	STRAP, tie (not shown) for wrapping conductor (20) wires	1
25	157705	UNION, swivel	2
26 *	100176	FITTING, reducer	2
27 *	119400	SEALANT, sst pipe (not shown)	1
30	193690	BRACKET, pressure control	1



* For GM3500 only. Use reducer fittings (26) and pipe sealant (27) for hose connections.

Graco Warranty

Graco warrants all equipment manufactured by Graco and bearing its name to be free from defects in material and workmanship on the date of sale by an authorized Graco distributor to the original purchaser for use. With the exception of any special, extended, or limited warranty published by Graco, Graco will, for a period of twelve months from the date of sale, repair or replace any part of the equipment determined by Graco to be defective. This warranty applies only when the equipment is installed, operated and maintained in accordance with Graco's written recommendations.

This warranty does not cover, and Graco shall not be liable for general wear and tear, or any malfunction, damage or wear caused by faulty installation, misapplication, abrasion, corrosion, inadequate or improper maintenance, negligence, accident, tampering, or substitution of non-Graco component parts. Nor shall Graco be liable for malfunction, damage or wear caused by the incompatibility of Graco equipment with structures, accessories, equipment or materials not supplied by Graco, or the improper design, manufacture, installation, operation or maintenance of structures, accessories, equipment or materials not supplied by Graco.

This warranty is conditioned upon the prepaid return of the equipment claimed to be defective to an authorized Graco distributor for verification of the claimed defect. If the claimed defect is verified, Graco will repair or replace free of charge any defective parts. The equipment will be returned to the original purchaser transportation prepaid. If inspection of the equipment does not disclose any defect in material or workmanship, repairs will be made at a reasonable charge, which charges may include the costs of parts, labor, and transportation.

THIS WARRANTY IS EXCLUSIVE, AND IS IN LIEU OF ANY OTHER WARRANTIES, EXPRESS OR IMPLIED, INCLUDING BUT NOT LIMITED TO WARRANTY OF MERCHANTABILITY OR WARRANTY OF FITNESS FOR A PARTICULAR PURPOSE.

Graco's sole obligation and buyer's sole remedy for any breach of warranty shall be as set forth above. The buyer agrees that no other remedy (including, but not limited to, incidental or consequential damages for lost profits, lost sales, injury to person or property, or any other incidental or consequential loss) shall be available. Any action for breach of warranty must be brought within two (2) years of the date of sale.

Graco makes no warranty, and disclaims all implied warranties of merchantability and fitness for a particular purpose in connection with accessories, equipment, materials or components sold but not manufactured by Graco. These items sold, but not manufactured by Graco (such as electric motors, switches, hose, etc.), are subject to the warranty, if any, of their manufacturer. Graco will provide purchaser with reasonable assistance in making any claim for breach of these warranties.

In no event will Graco be liable for indirect, incidental, special or consequential damages resulting from Graco supplying equipment hereunder, or the furnishing, performance, or use of any products or other goods sold hereto, whether due to a breach of contract, breach of warranty, the negligence of Graco, or otherwise.

FOR GRACO CANADA CUSTOMERS

The parties acknowledge that they have required that the present document, as well as all documents, notices and legal proceedings entered into, given or instituted pursuant hereto or relating directly or indirectly hereto, be drawn up in English. Les parties reconnaissent avoir convenu que la rédaction du présente document sera en Anglais, ainsi que tous documents, avis et procédures judiciaires exécutés, donnés ou intentés à la suite de ou en rapport, directement ou indirectement, avec les procédures concernées.

ADDITIONAL WARRANTY COVERAGE

Graco does provide extended warranty and wear warranty for products described in the "Graco Contractor Equipment Warranty Program".

Graco Phone Number

TO PLACE AN ORDER, contact your Graco distributor, or call this number to identify the distributor closest to you:
1-800-690-2894 Toll Free

*All written and visual data contained in this document reflect the latest product information available at the time of publication.
Graco reserves the right to make changes at any time without notice.*

Sales Offices: Minneapolis
International Offices: Belgium, Korea, Hong Kong, Japan

GRACO INC. P.O. BOX 1441 MINNEAPOLIS, MN 55440-1441

www.graco.com

PRINTED IN USA 308978 April 1999/Revised 10/2004