



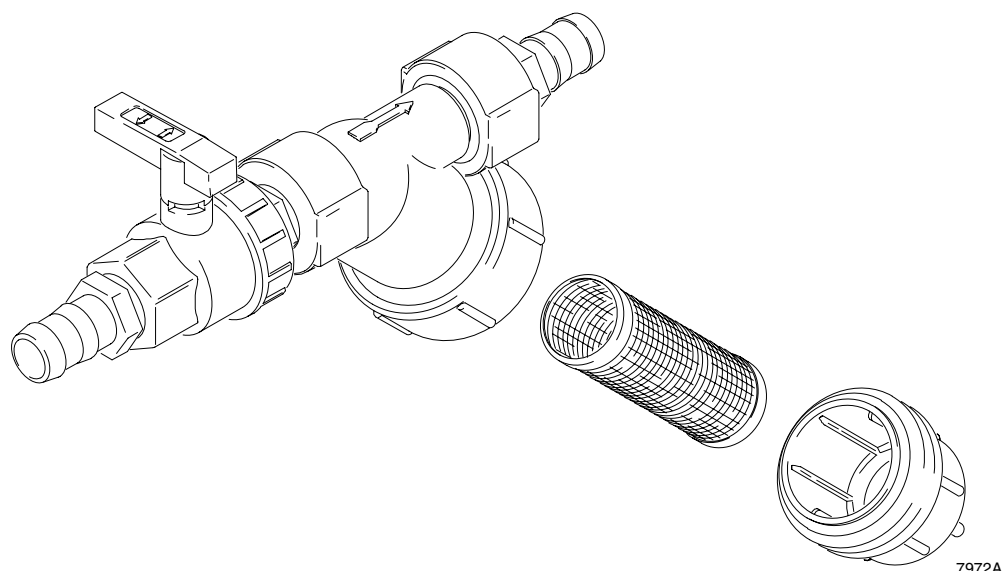
INSTRUCTIONS

This manual contains important warnings and information.
READ AND KEEP FOR REFERENCE.

Paint Strainer

75 psi (5 bar, 0.5 MPa) Maximum Working Pressure

Model 240499, Series A



Pressure Relief Procedure

WARNING



INJECTION HAZARD

The system pressure must be manually relieved to prevent the system from starting or spraying accidentally. Fluid under high pressure can be injected through the skin and cause serious injury. To reduce the risk of an injury from injection, splashing fluid, or moving parts, follow the **Pressure Relief Procedure** whenever you:

- are instructed to relieve the pressure,
- stop spraying,
- check or service any of the system equipment,
- install or clean the spray tip.

1. Engage gun safety latch.
2. Turn ON/OFF switch to OFF.
3. Unplug power supply cord.
4. Disengage gun safety latch. Hold metal part of gun firmly to grounded metal pail. Trigger gun to relieve pressure.
5. Engage gun safety latch.
6. Open pressure drain valve. Leave pressure drain valve open until ready to spray again.

If you suspect that the spray tip or hose is completely clogged or that pressure has not been fully relieved after following the steps above, VERY SLOWLY loosen the tip guard retaining nut or hose end coupling and relieve pressure gradually, then loosen completely. Now clear the tip or hose obstruction.

Instructions

Installation

1. Follow **Pressure Relief Procedure** on page 1.
2. Install strainer with screen (1) on inlet side of displacement pump (A).
3. Install strainer as close as possible to pump inlet.
4. For RoadLazer application: Install 1 paint strainer per each pump section hose. Locate paint strainers between vehicle and striper at lowest point.
5. Use clamps (4) to secure paint hose to each end of paint strainer.
6. Direction of flow: material must flow in direction of arrow (B) located on strainer.
7. Apply liberal amounts of grease to filter bowl threads (C) to eliminate paint adhesion.

Check and Clean

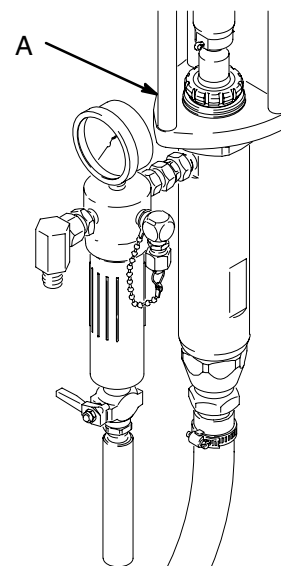
1. Follow **Pressure Relief Procedure** on page 1.
2. Check strainer filter screen regularly. A plugged filter screen can cause pump starving, pump wear, and pulsation.
3. To check or clean filter screen: turn ball valve (5) to OFF position. Remove filter bowl. Flush screen in water. Apply grease to filter bowl threads. Install filter screen and bowl. Open ball valve.

Wetted Parts

Polypropylene, PTFE, and fluoroelastomer

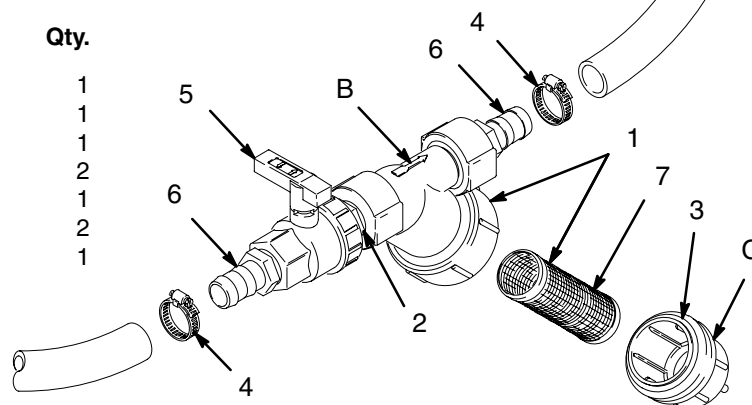
Chemical Compatibility

Paint strainer is designed for waterborne paints. Consult paint manufacturer for other uses.



Parts

Ref No.	Part No.	Description	Qty.
1	193211	STRAINER, with screen	1
2	193212	NIPPLE, 1 in. npt	1
3	193213	O-RING, packing	1
4	116953	CLAMP, hose	2
5	193214	VALVE, ball, 1 in.	1
6	193215	BARB, hose, in.	2
7	193216	Replacement Screen	1



7972A

All written and visual data contained in this document reflects the latest product information available at the time of publication.
Graco reserves the right to make changes at any time without notice.

This manual contains: English
Graco Headquarters: Minneapolis
International Offices: Belgium, Korea, China, Japan

GRACO INC. P.O. BOX 1441 MINNEAPOLIS, MN 55440-1441

<http://www.graco.com>

Written in U.S.A. Rev 1/2007