



This manual contains important warnings and information.  
**READ AND KEEP FOR REFERENCE.**

INSTRUCTIONS

First choice when  
quality counts.™

## Frame, Roller

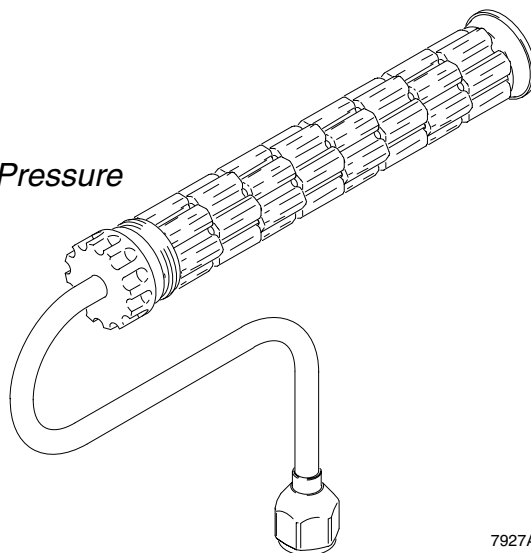
5000 psi (345 bar, 34.5 MPa) Maximum Working Pressure

### Model 240054, Series A

3 in. (7.6 cm) length

### Model 240055, Series A

12 in. (30.5 cm) length



7927A

## Pressure Relief Procedure

### WARNING



#### INJECTION HAZARD

The system pressure must be manually relieved to prevent the system from starting or spraying accidentally. Fluid under high pressure can be injected through the skin and cause serious injury. To reduce the risk of an injury from injection, splashing fluid, or moving parts, follow the **Pressure Relief Procedure** whenever you:

- are instructed to relieve the pressure,
- stop spraying,
- check or service any of the system equipment,
- install or clean the frame.

1. Lock the gun safety latch.
2. Shut off the power supply to the pump and open any air bleed valves in the system.
3. Unlock the gun safety latch.
4. Hold a metal part of the gun firmly to the side of a *grounded* metal waste container, and trigger the gun to relieve pressure.
5. Lock the gun safety latch.
6. Open the pump drain valve to help relieve fluid pressure in the pump, hose and gun. Triggering the gun to relieve pressure may not be sufficient. Have a container ready to catch the drainage.
7. Leave the drain valve open until you are ready to spray again.

*If you suspect that the frame or hose is completely clogged or that pressure has not been fully relieved after following the steps above, VERY SLOWLY* loosen the tip retaining nut or hose end coupling and relieve pressure gradually, then loosen completely. Now clear the frame or hose obstruction.

# Installation

## ⚠ WARNING

Refer to your sprayer and spray gun manuals for appropriate warnings and instructions for safe operation of this roller frame.

Gasket (7) and gasket retainer (8) must be in place before installing frame (1). If gasket and gasket retainer are not in place there is a potential injection hazard which could result in serious injury.

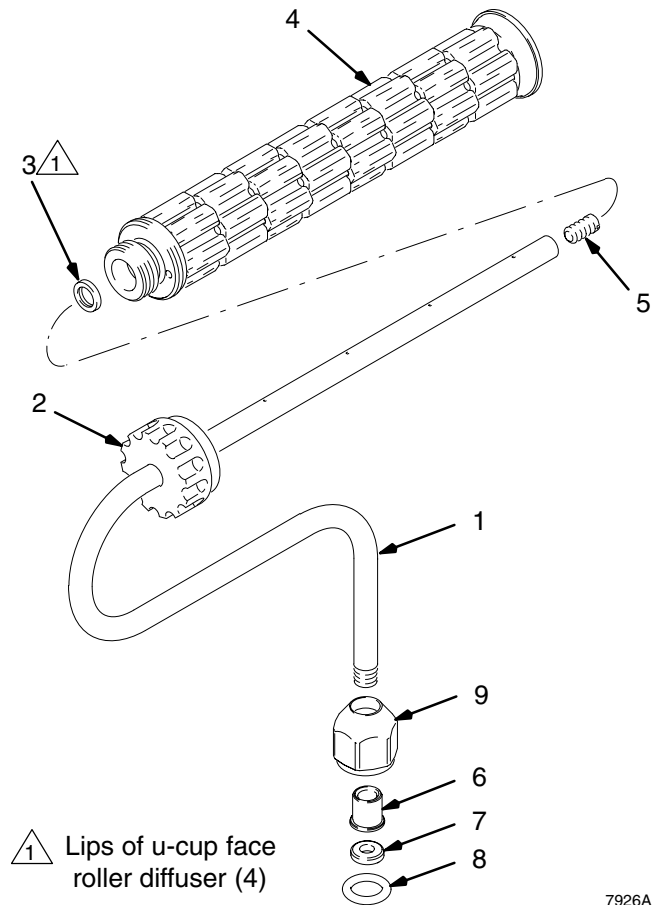
1. Follow **Pressure Relief Procedure** on page 1.
2. Prime pump.
3. Install roller frame.

## Parts

Ref No.	Part No.	Description	Qty
1		FRAME, roller	
	220235	Model 240054, 3 in. (7.6 cm)	1
	224378	Model 240055, 12 in. (30.5 cm)	1
2	183420	NUT, retainer, diffuser	1
3	108808	PACKING, u-cup	1
4		DIFFUSER, roller	
	220233	Model 240054, 3 in. (7.6 cm)	1
	224377	Model 240055, 12 in. (30.5 cm)	1
5	101983	SCREW, set	1
6	192638	FITTING, swivel	1
7	162863	GASKET, non-metallic	1
8	114049	O-RING	1
9	192637	NUT, retaining, 7/8-14 (f)	1

**Wetted Parts:** ..... Viton®, nylon, plated steel  
polyethylene, Delrin®

**NOTE:** Delrin® and Viton® are registered trademarks of the DuPont Co.



7926A

All written and visual data contained in this document reflects the latest product information available at the time of publication.  
Graco reserves the right to make changes at any time without notice.

**Sales Offices:** Minneapolis, Detroit  
**International Offices:** Belgium, Korea, Hong Kong, Japan

**GRACO INC. P.O. BOX 1441 MINNEAPOLIS, MN 55440-1441**

<http://www.graco.com>

PRINTED IN U.S.A. 308830 December 1997, Revised April 2002