



INSTRUCTIONS

This manual contains important warnings and information.
READ AND KEEP FOR REFERENCE.

TexSpray EXT HP Auxiliary Tank Kit 239031

100 psi (7 bar) Maximum Air and Fluid Working Pressure

WARNING

Pressure Relief Procedure

To reduce the risk of serious bodily injury, including electric shock and splashing fluid in the eyes, follow this procedure whenever you stop spraying.

1. Shut off the pump or sprayer.
2. Trigger the gun.
3. Open the gun air valve.
4. Disconnect the power source.

Grounding

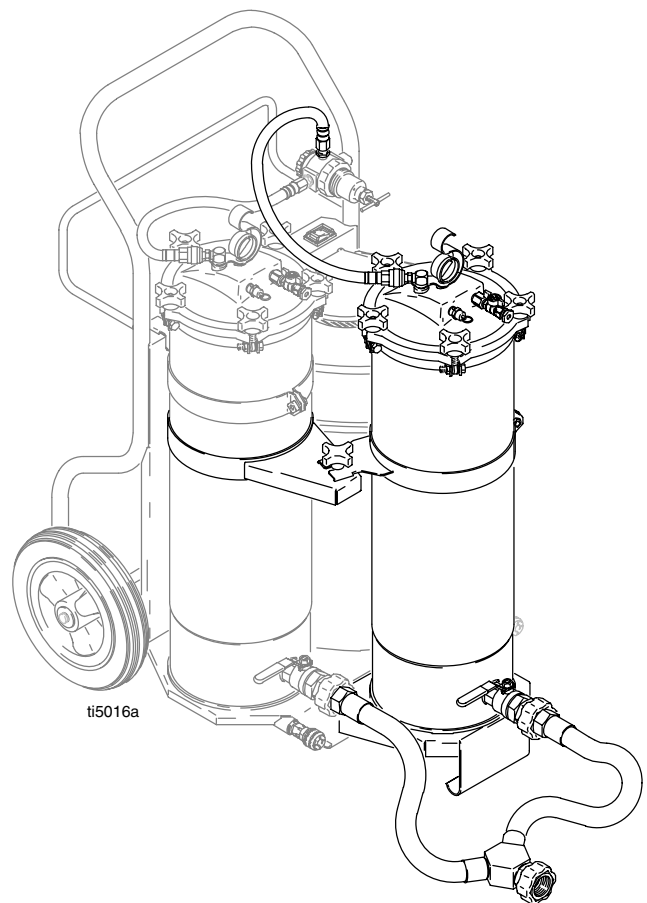
To reduce the risk of electric shock, proper electrical grounding is essential. See your separate pump or sprayer instruction manual, and consult your local electrical codes for detailed grounding instructions.

Working Pressure

To reduce the risk of component rupture and serious bodily injury, never exceed *100 psi (7 bar) FLUID WORKING PRESSURE*. Do not exceed the maximum working pressure of any other component in the system.

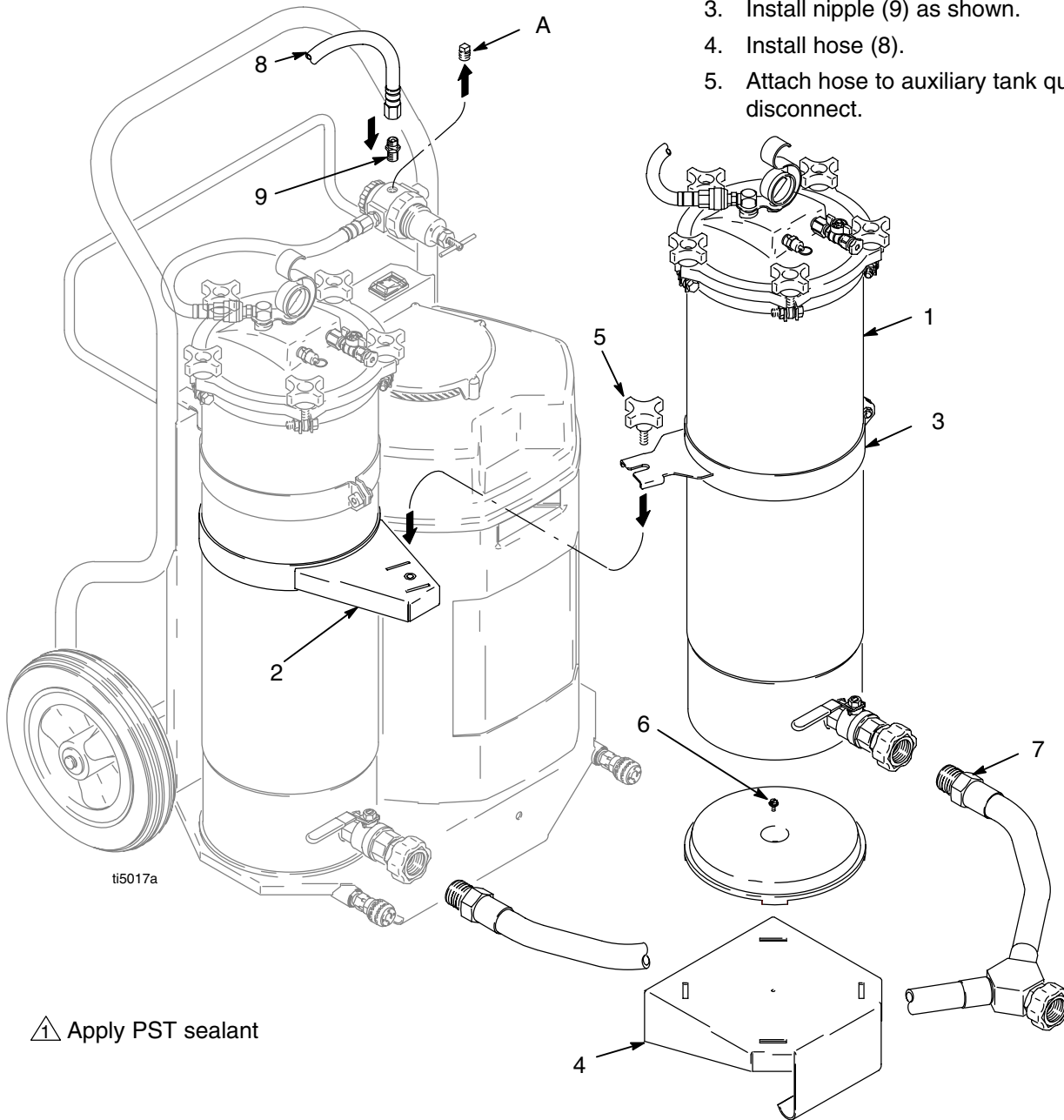
Fluid and Solvent Compatibility

Do not use 1,1,1-trichloroethane, methylene chloride, other halogenated hydrocarbon solvents or fluids containing such solvents in this equipment, which contains aluminum and/or zinc parts. Such use could result in a serious chemical reaction, with the possibility of explosion, which could cause death, serious bodily injury and/or substantial property damage.



Installation

1. Relieve pressure. Follow **Pressure Relief Procedure** on page 1.
2. Remove fitting (A) from regulator.
3. Install nipple (9) as shown.
4. Install hose (8).
5. Attach hose to auxiliary tank quick disconnect.



△ Apply PST sealant

Fig. 1

Ref No	Part No.	Description	Qty	Ref No	Part No.	Description	Qty
1	239023	TANK	1	6	113974	SCREW, hwhd, 10–24, Taptite	1
2	239030	BAND, retaining, tank	1	7	238781	KIT, fluid, hose <i>includes 8 and 9</i>	1
3	192707	BRACKET, tank	2	8	190806	HOSE	1
4	191942	BRACKET, base, tank	1	9	162453	NIPPLE, adapter, 1/4 npt x 1/4 npsm	1
5	108471	KNOB	1				

Sales Offices: Minneapolis
International Offices: Belgium, Korea, Hong Kong, Japan

GRACO INC. P.O. BOX 1441 MINNEAPOLIS, MN 55440–1441

PRINTED IN U.S.A. 308814 October 1997, Revised 4/2004