



This manual contains important warnings and information.  
**READ AND KEEP FOR REFERENCE.**

INSTRUCTIONS

**– For Water-Based Materials Only –**

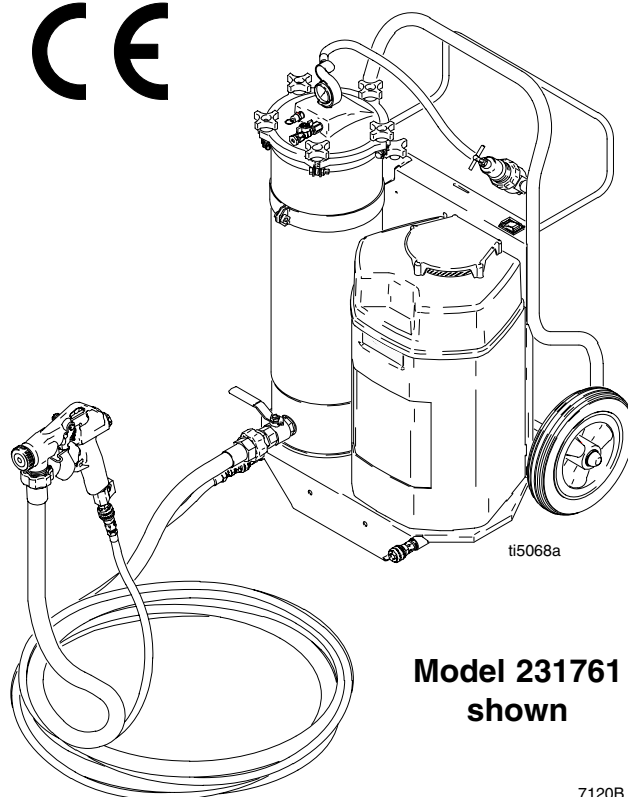
**ELECTRIC TEXTURE SPRAYER WITH COMPRESSOR**

## TexSpray™ EXT HP and Twin Tank

*100 psi (0.7 MPa, 7 bar) Maximum Working Pressure*

| Power          | Model  | Description  |
|----------------|--------|--|
| 120V,<br>60 Hz | 231761 | Sprayer Model 231561 with 1-in. fluid hose, 3/8-in. air hose, and Trigger Gun with fine finish tip   |
|                | 231762 | Sprayer Model 231561 with 1-in. fluid hose, 3/8-in. air hose, and Flex Gun                           |
|                | 231763 | Sprayer Model 231561 with 1-in. fluid hose, 3/8-in. air hose, and 3-ft Pole Gun                      |
| 240V,<br>50 Hz | 231769 | Sprayer Model 231563 with 1-in. fluid hose, 3/8-in. air hose, and Trigger Gun with fine-finish tip   |
|                | 231770 | Sprayer Model 231563 with 1-in. fluid hose, 3/8-in. air hose, and Flex Gun                           |
|                | 231771 | Sprayer Model 231563 with 1-in. fluid hose, 3/8-in. air hose, and 3-ft Pole Gun                      |
| None           | 231753 | Twin-Tank Model 231587 with 1-in. fluid hose, 3/8-in. air hose, and Trigger Gun with fine-finish tip |
|                | 231754 | Twin-Tank Model 231587 with 1-in. fluid hose, 3/8-in. air hose, and Flex Gun                         |
|                | 231755 | Twin-Tank Model 231587 with 1-in. fluid hose, 3/8-in. air hose, and 3-ft Pole Gun                    |

CE



**Model 231761  
shown**

**GRACO INC. P.O. BOX 1441 MINNEAPOLIS, MN 55440-1441**

©COPYRIGHT 1997, GRACO INC.

Graco Inc. is registered to I.S. EN ISO 9001

# Table of Contents

|   |    |   |    |
|---|----|---|----|
| Warnings .....                              | 2  | Typical Twin Tank Setup .....               | 21 |
| Component Identification and Function ..... | 4  | TexSpray EXT Wiring Diagram .....           | 22 |
| Preparation .....                           | 6  | Parts .....                                 |    |
| Startup .....                               | 11 | TexSpray EXT Models 231561 and 231563 ..... | 22 |
| Spray Techniques .....                      | 12 | TexSpray Twin Tank Model 231587 .....       | 24 |
| Shutdown and Cleanup .....                  | 14 | Pressure Pot 239023 .....                   | 25 |
| Troubleshooting .....                       | 16 | Accessories .....                           | 26 |
| Removing and Reinstalling Compressor .....  | 18 | Technical Data .....                        | 27 |
| Removing and Inspecting Cooler .....        | 20 | Graco Warranty .....                        | 28 |
|   |    | Graco Phone Number .....                    | 28 |

## Symbols

### Warning Symbol



This symbol alerts you to the possibility of serious injury or death if you do not follow the instructions.

### Caution Symbol



This symbol alerts you to the possibility of damage to or destruction of equipment if you do not follow the instructions.

## ! WARNING



INSTRUCTIONS

### EQUIPMENT MISUSE HAZARD

Equipment misuse can cause the equipment to rupture or malfunction and result in serious injury.

- This equipment is for professional use only.
- Read all instruction manuals, tags, and labels before operating the equipment.
- Use the equipment only for its intended purpose. If you are not sure, call your distributor.
- Do not expose the system to rain. Always store the system indoors.
- Do not alter or modify this equipment. Use only genuine Graco parts.
- Check equipment daily. Repair or replace worn or damaged parts immediately.
- Do not exceed the maximum working pressure of the lowest rated component in your system. This equipment has a **100 psi (0.7 MPa, 7 bar) maximum working pressure at 100 psi (0.7 MPa, 7 bar) maximum air pressure.**
- To reduce the risk of serious injury, including electric shock and splashing fluid in the eyes, follow the **Pressure Relief Procedure** on page 6 before checking or repairing the compressor.
- Do not use hoses to pull equipment.
- Route hoses away from traffic areas, sharp edges, moving parts, and hot surfaces. Do not expose Graco hoses to temperatures above 55°C (130°F) or below -40°C (-40°F).
- Do not lift pressurized equipment.
- Do not lay equipment down or allow material in pressure pot to plug the port to the pressure pot cover safety valve.
- Do not use the pot cover storage hook to lift the sprayer.

# WARNING



## TOXIC FLUID HAZARD

Hazardous fluid or toxic fumes can cause serious injury or death if splashed in the eyes or on the skin, inhaled, or swallowed.

- Know the specific hazards of the fluid you are using.
- Store hazardous fluid in an approved container. Dispose of hazardous fluid according to all local, state, and national guidelines.
- Always wear protective eyewear, gloves, clothing, and respirator as recommended by the fluid and solvent manufacturer.
- Pipe and dispose of exhaust air safely, away from people, animals, and food handling areas.
- Never directly inhale compressed air. Compressed air may contain toxic vapors.



## FIRE AND EXPLOSION HAZARD

Improper grounding, poor ventilation, open flames or sparks can cause a hazardous condition and result in a fire or explosion and serious injury.

- **The system is for use only with water-based materials.** Use fluids compatible with the equipment wetted parts. Refer to the **Technical Data** section of all equipment manuals. Read the fluid and solvent manufacturer's warnings.
- Ground the equipment. See **Grounding and Electrical Requirements** on page 7.
- If there is any static sparking or you feel an electric shock while using this equipment, **stop spraying immediately**. Do not use the equipment until you identify and correct the problem.
- Provide fresh air ventilation to avoid the buildup of flammable fumes from solvents or the fluid being sprayed.
- Keep the work area free of debris, including solvent, rags, and gasoline.
- The pressure pot is lined to prevent corrosion and aid pot cleanup. To prevent liner damage, do not mix texture material in the pot. Inspect the pot daily, and replace the pot if corrosion or other damage is present.
- Locate the sprayer at least 20 ft (6.1 m) away from any explosive vapors, due to arcing parts.
- Comply with all applicable local, state, and national fire, electrical, and safety regulations.



## CLEANING SOLVENT HAZARD WITH PLASTIC PARTS

Use only compatible solvents to clean all plastic parts. Many solvents can degrade plastic parts to the point where they could fail. Such failure could cause serious injury or property damage. See the **Technical Data** section on page 27 in this instruction manual and in all other equipment manuals. Read the fluid and solvent manufacturer's warnings.

# Component Identification and Function

|   | Component                     | Function   |
|---|-------------------------------|--|
| A | ON/OFF switch                 | Power switch that controls 120/240V AC power to sprayer                            |
| B | Air pressure regulator        | Adjusts air pressure in pot to control flow rate of material to spray gun          |
| C | Pot cover storage hook        | Allows the cover to hang from cart frame during pressure pot refilling             |
| D | Pot safety valve              | Prevents pot pressure from exceeding 100 psi (0.7 MPa, 7 bar)                      |
| E | Pot vent valve                | Allows quick venting of pot air pressure for refilling and cleanup                 |
| F | Five-gallon pressure pot      | Holds texture material   |
| G | Air filter                    | Filters incoming air to the compressor   |
| H | Fluid valve                   | Shuts off fluid supply to spray gun  |
| J | Spray gun                     | Uses compressor air to break up and spray texture material                         |
| K | Air outlet                    | Provides quick disconnection of air supply from spray gun                          |
| L | Auxiliary air compressor port | Provides connection to replacement or supplemental air compressor                  |
| M | Compressor safety valve       | Prevents supply and gun air pressure from exceeding 100 psi (0.7 MPa, 7 bar) limit |
| N | Cooler                        | Reduces temperature of air from compressor   |
| P | Compressor                    | Open frame AC motor, 1-phase, with oil-less single-stage air compressor            |
| R | Gun air valve                 | Shuts off air supply to spray gun  |
| S | Air line drain valve          | Allows air line moisture accumulation to be drained                                |

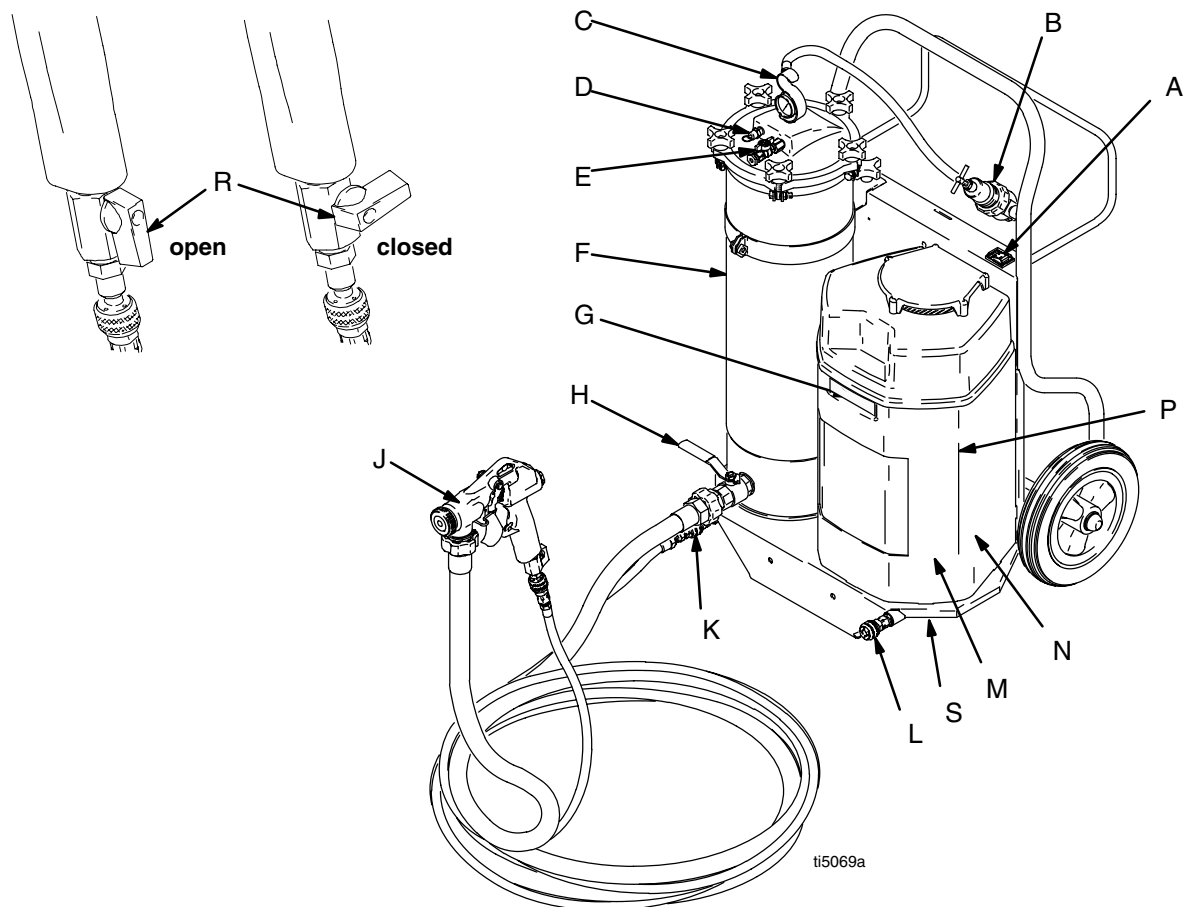


Fig. 1

# Notes

# Preparation

## Compressor Break-in

The first time you use the system, run the compressor under no load to break it in, improve performance, and lengthen its life.

1. Connect the air hose to the air outlet (K) and to the gun air inlet. Open gun air valve (R) all the way. See Fig. 2.

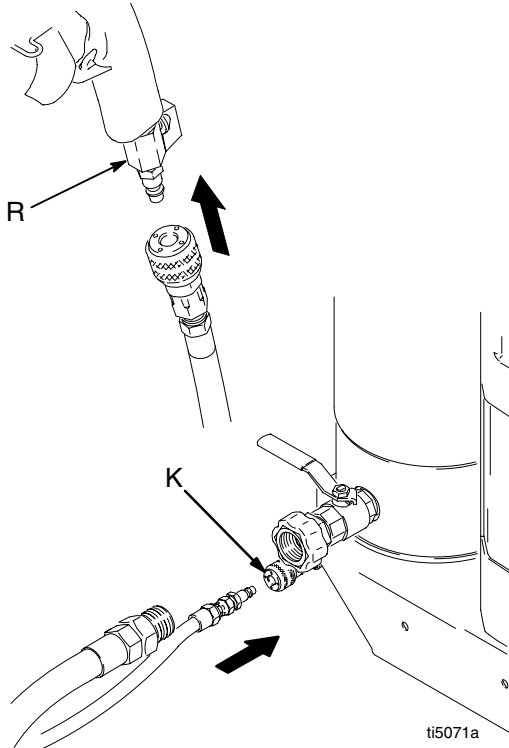


Fig. 2

2. Turn ON/OFF switch (A) ON. Run system for 15 minutes. Turn the switch OFF. See Fig. 3.

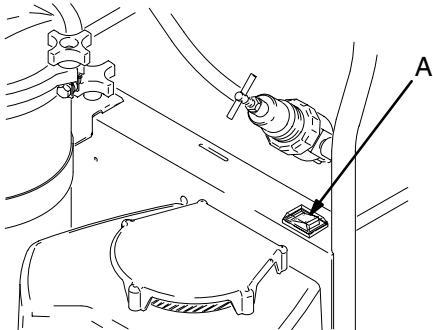


Fig. 3

## WARNING

### PRESSURIZED EQUIPMENT HAZARD

The system pressure must be manually relieved to prevent the system from starting or spraying accidentally. To reduce the risk of an injury from accidental spray from the gun, splashing fluid, or moving parts, follow the **Pressure Relief Procedure** whenever you

- Are instructed to relieve the pressure
- Stop spraying
- Check or service any of the system equipment
- Install or clean the spray nozzle

### Pressure Relief Procedure

1. Shut off the system.
2. Trigger the gun into a pail.
3. Open the gun air ball valve (R) (handle parallel with valve body). See Fig. 2.
4. Unplug the system.

# Preparation

## Grounding and Electrical Requirements

### **⚠ WARNING**

Improper installation or alteration of the grounding plug will result in a risk of electric shock, fire or explosion that could cause serious injury or death.

#### Extension Cords

- Use only an extension cord with an undamaged, 3-prong plug.
- For up to 25 ft (7.6 m) cord, use 3-wire, 12 AWG (1.5 mm<sup>2</sup>) minimum.
- For 25 to 50 ft (7.6 to 15.2 m) cords, use 3-wire, 10 AWG (2.5 mm<sup>2</sup>) minimum.

#### 120V AC Systems

- This equipment requires a 120V AC, 60 Hz, 15A circuit with a grounding receptacle. See Fig. 4.

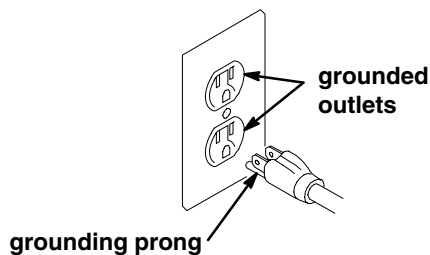


Fig. 4

- Do not alter the ground prong or use an adapter.
- A maximum length of 25 ft, 12 AWG or 50 ft, 10 AWG extension cord may be used.

#### 240V AC Systems

- This equipment requires a 240V AC, 50 Hz, 16A circuit with a grounding receptacle. See Fig. 5.

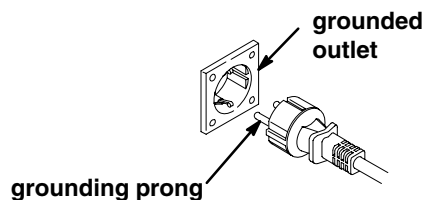


Fig. 5

- Do not alter the ground prong or use an adapter.
- A maximum length of 8 m, 1.5 mm<sup>2</sup> or 15 m, 2.5 mm<sup>2</sup> extension cord may be used.

## Hose Size and Lengths

The system comes with a hose set consisting of a 1 in. ID x 25 ft (25 mm x 7.6 m) fluid hose and a 3/8 in. ID air hose. The 1 in. hose set includes an adapter hose between the gun and main hose. See **Parts List** on page 23.

Do not use more than 75 ft (23 m) of fluid hose.

## Auxiliary Air Compressor

An external air compressor may be connected (adapter included) to the auxiliary air compressor port (L) to supplement, or replace, the internal air compressor of the TexSpray. This may be useful when

- Additional air is needed to break up hard-to-spray materials
- When the job site does not have the proper electric service, but a gasoline-powered compressor is available

### **⚠ WARNING**

Over pressurizing the system may cause component rupture and resulting in serious injury.

To reduce the risk of over pressurizing the system, do not use a compressor with an output pressure greater than 100 psi (70 kPa, 7 bar), and/or with a delivery greater than 6.8 scfm at 90 psi (0.19 m<sup>3</sup>/min. at 60.3 kPa, 6.3 bar).

## Removing and Installing the Pressure Pot

1. To remove the pressure pot (F), loosen the knob (T) so that about 1 in. of the threads are showing. Lift the pot off the unit. See Fig. 6.
2. To install the pressure pot, align bracket over slots (S) and set it on the plastic base. Tighten the knob (T). See Fig. 6.

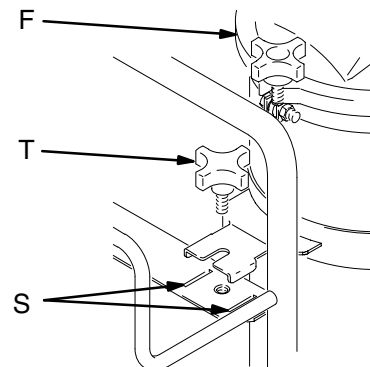


Fig. 6

7124A

# Preparation

## System Setup

See Fig. 7

1. Connect the hoses and gun as shown.
2. Be sure the air filter (G) is in place.
3. Plug the power cord into a properly grounded outlet.

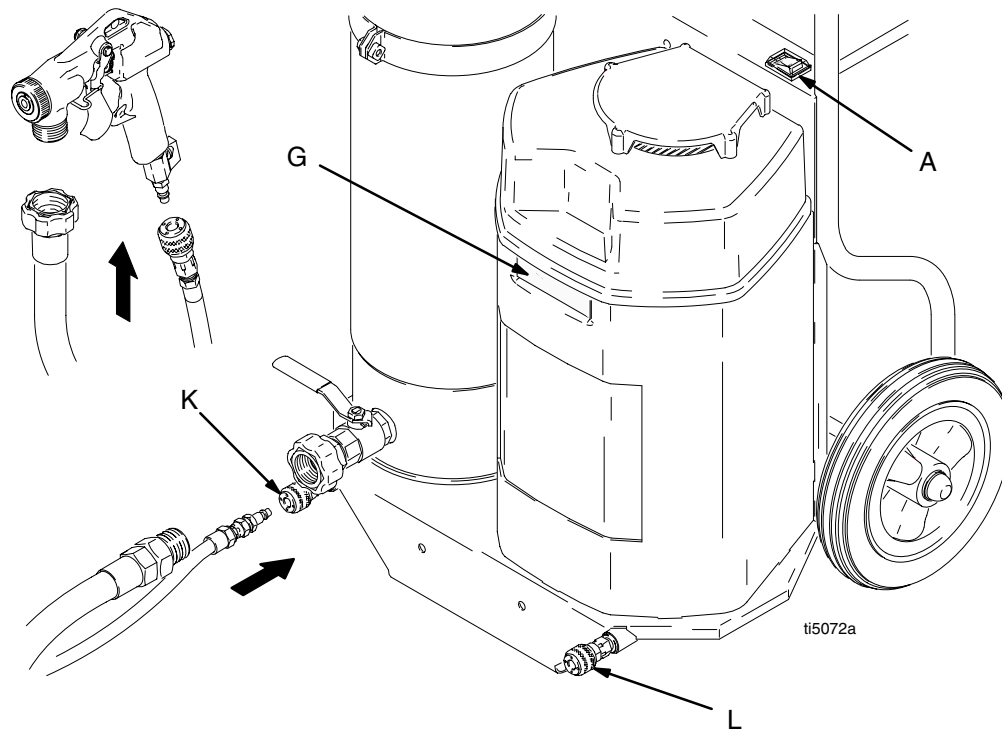


Fig. 7



# Preparation

## Operation Characteristics

- Always start the system with the compressor air relieved.
- Air bleeds from the gun nozzle whenever the gun air ball valve (R) is open. Close the gun air ball valve to stop the air, if desired. See Fig. 8. See **Spraying Techniques** on pages 12 and 13 for more gun characteristics.
- A compressor unloader valve (M) with two pressure relief valves (W) is located under the compressor guard (11). Air escapes from the valve, often causing a popping sound, when air flow at the gun is too restricted. The valve resets automatically when the air flow is increased. See Fig. 9.

### WARNING

The motor has a thermal overload switch that shuts down the motor if it overheats.

To reduce the risk of serious bodily injury due to the system restarting unexpectedly, always turn the ON/OFF switch (A) OFF if the motor shuts down. See Fig. 7.

### CAUTION

Damage to the power cord may result from uninterrupted operation. Do not operate sprayer at maximum pressure for more than 1 hour in any 2 hour period.

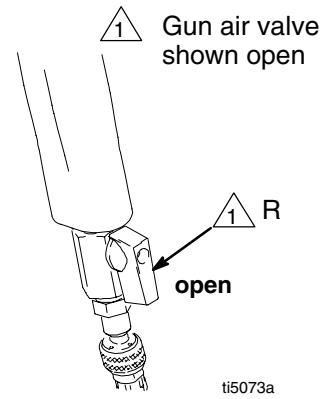


Fig. 8

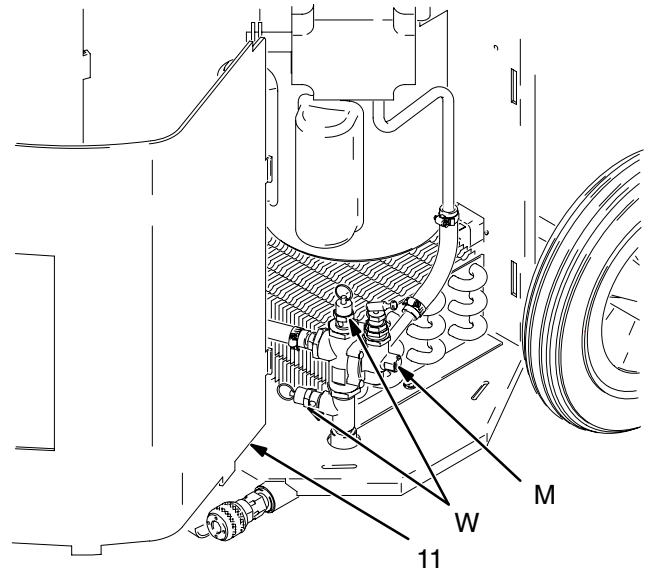


Fig. 9

# Preparation

## Wetting the Hose Before Spraying Texture Material

Wet the inside of the hose before each use to flush out sediment and to prevent the texture material from packing out the hose.

1. The pot capacity is 5 gallons (19 liters). Add two gallons of clean water to the pot.

**NOTE:** A small amount of air flow through the gun helps to prevent material from backing up the needle valve.

2. Partially open the gun air valve (R). (The system primes easier if a little air is supplied to the gun.)
3. Turn the ON/OFF switch (A) ON. Adjust the regulator (B) to pressurize the pot to about 20 psi (138 kPa, 1.4 bar). Trigger the gun into a pail. Spray water to wet the inside of the fluid hose.
4. Turn the ON/OFF switch (A) OFF.
5. Open the gun air ball valve (R) to relieve the compressor air. Open the pot vent valve (E) to vent the pot.

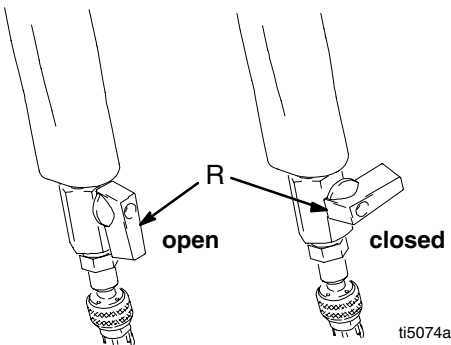


Fig. 10

## Mixing the Material

### CAUTION

This system is designed for use with only certain types of material. Any other use could seriously damage the unit.

- Do not use any solvent-based materials. Use only water-based materials.
- Use only simulated acoustic and gypsum-based wall texture materials in this system.
- Not all cementitious materials can be sprayed. Many cementitious materials will damage the sprayer.

**Proper material mixture is essential. The sprayer will not operate if the material is too thick.**

Slowly add one bag of texture material to clean water as instructed on the bag instructions. Agitate to a smooth, lump-free consistency. **Thin or thicken the material as needed before pouring it into the pot.** For the best results, do not use partial bags of material.

Premixed cementitious material is typically sprayable; bagged cementitious material is typically unsprayable.

Perform the following procedure to determine if a bagged material is sprayable and whether it could damage the sprayer:

1. Mix material and wait 10 minutes.
2. If the material settles out, it will probably pack out when you attempt to spray it, which would damage the sprayer. Do not use the material.

# Startup

## Prime the System

See Fig. 11

1. To minimize material pack-up in the hose when using heavy sand material
    - a. Disconnect gun from material hose.
    - b. Open fluid supply valve (H).
    - c. Thin 2 quarts (1.4 liters) of material to 1/2 thickness. Pour the solution into the tank.
  2. After the 1/2-thickness material begins to enter the hose, fill the pressure pot (F) with the prepared texture material. Install the float assembly on top of the material to prevent air from disrupting material flow.
  3. Install the gun and a nozzle. See **Nozzle Selection**, page 12.
- NOTE:** A small amount of air flow through the gun helps to prevent material from backing up the needle valve.
4. Open the gun air valve (R) (see Fig. 10) to be sure air pressure is relieved. Leave the gun partially open. The system primes easier if a little air is supplied to the gun.
  5. Be sure there are no kinks in the hose, which restricts fluid flow.

### NOTES:

- If spraying a simulated acoustic or coarse grain material, disconnect the hose at the gun, prime the hose, and direct the material into a pail for 10 seconds. Turn the ON/OFF switch OFF, and vent the pressure pot. Reconnect the hose to the gun.
  - A small amount of air flow through the gun helps to prevent material from backing up the needle valve.
6. Turn the ON/OFF switch (A) ON. Trigger the gun into a pail. Continue until there is a solid stream of texture material.
  7. See **Spray Techniques** on pages 12 and 13 for proper spray pattern with pump and gun adjustments.

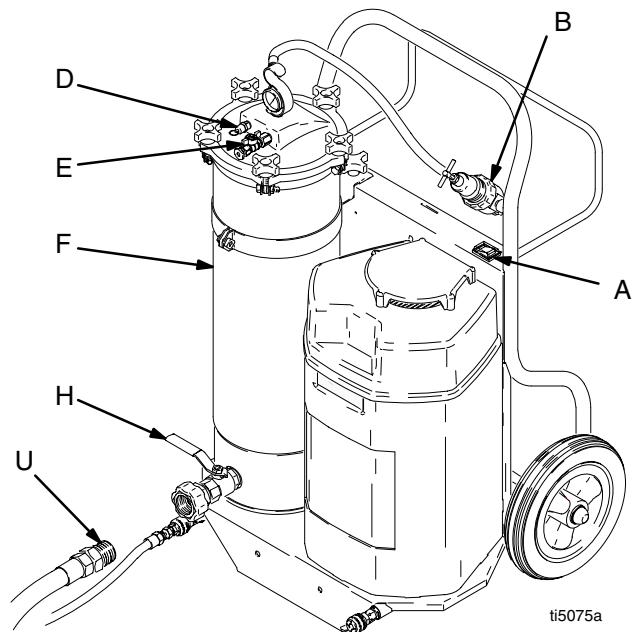


Fig. 11

# Spray Techniques

## Nozzle Selection

| Application           | Nozzle <sup>2</sup>   | Air Volume <sup>1</sup> |
|-----------------------|-----------------------|-------------------------|
| Fog                   | 3 – 4 mm              | high                    |
| Simulated acoustic    | 4 mm                  | medium to high          |
|                       | 6 mm                  |                         |
|                       | 8 – 10 mm             |                         |
| Orange peel           | 3 – 4 mm              | medium to high          |
| Splatter coat         | 6 – 8 mm<br>6 – 10 mm | low to medium           |
| Knockdown             | 8 – 12 mm             | low                     |
| Textured Elastomerics | 8 – 12 mm             | high                    |
| Plastics              | 8 – 10 mm             | high                    |
| EIFS                  | 8 – 12 mm             | high                    |
| Stucco                | 10 – 12 mm            | high                    |

<sup>1</sup> Control air volume with gun air flow valve (R).

<sup>2</sup> For more material volume, try a larger orifice nozzle.

## Adjusting the System

Sufficient fluid output (volume and pressure) and good atomization require testing to balance the compressor air to the gun and pump and proper nozzle selection. Keep in mind these important points when adjusting the gun:

- Read all of pages 12 and 13 before spraying.
- Start the sprayer with the gun air valve fully open. If needed, slowly decrease the gun air flow until you get a good spray pattern. Use the minimum amount of air at the spray gun to achieve the proper spray pattern and to minimize bounce back.
  - Test the spray pattern on cardboard. Hold the gun 18 to 30 in. (457 to 762 mm) from the surface. Use this spraying distance for most applications.
  - Overlap each stroke 50% in a circular motion.
- Select the proper nozzle for your application. See the **Nozzle Selection** at left. Consider the size of aggregate in the material and the coarseness of the spray pattern. Remember, the larger the nozzle, the heavier the pattern.
- All spraying adjustments are made at the gun. Material pressure and flow rate adjustments are made at the regulator.
- The compressor provides air to the gun and the pot; thus, the more air you supply to the gun, the less that is available for the pot.

**Note:** It takes the sprayer 15 seconds to stabilize at the pressure that is set at the regulator.

# Spray Techniques

## To Get Less Material

Try any one or a combination of these methods:

- Use a smaller nozzle.
- Reduce pot pressure. Use the regulator.

## To Get More Material

Try any one or a combination of these methods:

- Slightly close the air inlet ball valve on the gun.
- Use a shorter hose.
- Use a thinner material mixture.
- Try a larger-orifice nozzle.
- Increase pot pressure (use the regulator).

## Preventing Material Surge

To prevent material surge at the beginning of a spray pattern, slowly squeeze the trigger to the fully triggered position while moving the gun quickly.

## For Continuous Spraying

Use the trigger bail (401) to hold the trigger (see Fig. 12) open to reduce operator fatigue.

## Check Material Consistency Periodically

Check and thin the material as needed to maintain the proper consistency. The material may thicken as it sits and slow down production or affect the spray pattern.

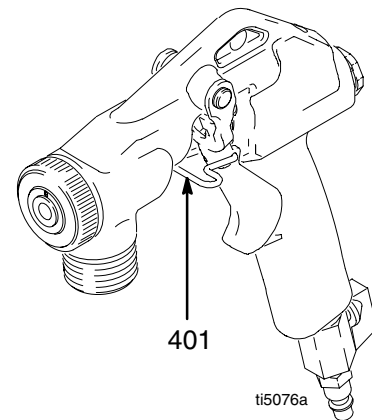


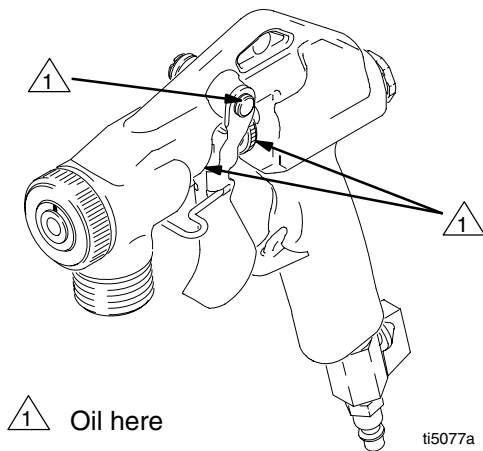
Fig. 12

# Shutdown and Cleanup

## **⚠ CAUTION**

To keep the unit in good operating condition, always clean it thoroughly and prepare it properly for storage, even for overnight storage. Pay particular attention to the following:

- A dirty filter allows contaminants into the compressor and eventually into the pot and gun, resulting in poor performance and damage.
- The gun requires daily lubrication for consistent performance. See Fig. 13.
- In cold weather, store the system where it will not freeze. If it does freeze, thaw it thoroughly before using it.



**Fig. 13**

*See Fig. 14 and Fig. 15*

1. Be sure the compressor pressure is relieved by opening gun air ball valve.

**NOTE:** A small amount of air flow through the gun helps to prevent material from backing up the needle valve.

2. Partially open the gun air ball valve (R), and turn on the ON/OFF switch (A).
3. Trigger the gun into a pail to empty the fluid in the pot.
4. Half fill the pot (F) with clean water. Clean the inside of the pot with a brush, if needed.

## **⚠ CAUTION**

Flushing the hoses of the TexSpray EXT HP with hot water weakens the hoses. A weakened hose is more susceptible to damage and leakage. Do not use hot water to flush the hoses.

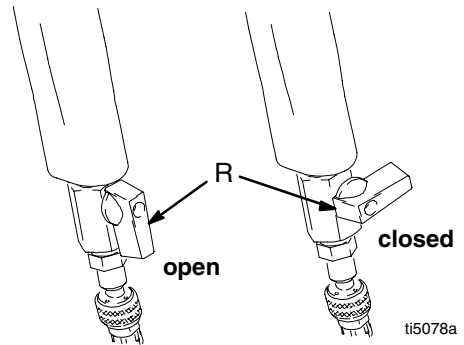
**NOTE:** The pot can be removed for cleaning. See page 7.

5. Trigger the gun into a pail until the float stop shuts off the material flow.
6. Fill the pot with clean water, and install the lid.
7. Start the sprayer. Spray half the water into a pail. Shut off the sprayer, and relieve the pressure. Remove the spray gun. Close the fluid outlet valve (H). Disconnect the hose from the coupler (43) and install several hose cleaning balls (81) into the hose. Reconnect the hose. Open the fluid outlet valve (H).
8. Start the sprayer. The sprayer tank pressure forces the hose cleaning balls and the water into the pail. Be sure to recover the hose cleaning balls.

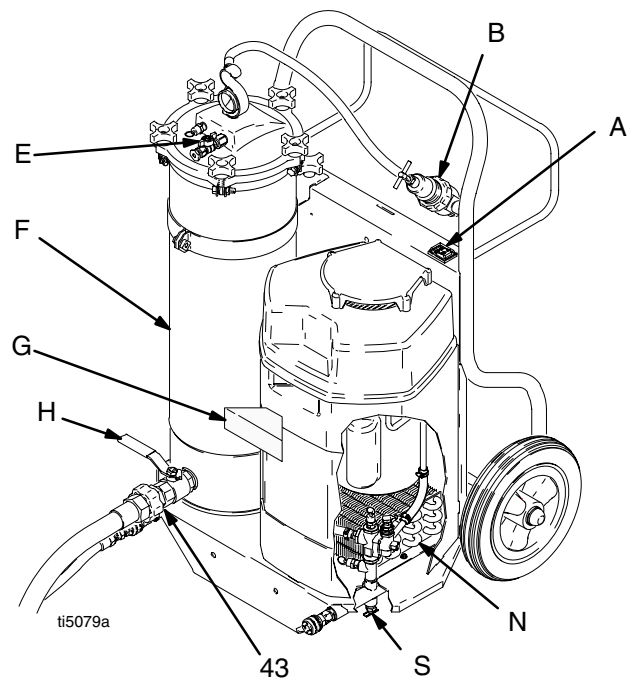
**Note:** Use low pressure when the hose cleaning balls are in the hose.

# Shutdown and Cleanup

9. Turn off the switch (A). Open the gun air valve (R) to relieve compressor pressure. Open the pot vent valve (E).
10. Remove the air filter (G), wash it thoroughly with soap and water, and reinstall it.
11. Clean and dry the gun. Oil the gun daily with a few drops of SAE-10 light oil at the points indicated in Fig. 13.
12. Remove any dry residue from the cooler (N).
13. Drain the frame air line after each use as follows.
  - a. Open the drain cock valve (S).
  - b. Start the sprayer.
  - c. Rock the sprayer back and forth slightly to drain any moisture in the air line.
  - d. Stop the sprayer.
  - e. Close the drain cock valve.

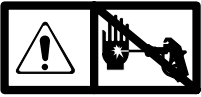


**Fig. 14**



**Fig. 15**

# Troubleshooting



See **Pressure Relief Procedure** on page 6.

| PROBLEM                      | CAUSE                               | SOLUTION   |
|------------------------------|-------------------------------------|--|
| Compressor does not start    | Trapped air pressure                | Relieve air pressure by connecting air hose and opening gun air valve.   |
|                              | Improper power supply               | Connect to power supply rated for your sprayer.  |
|                              | Tripped thermal overload in motor   | Check extension cord. Allow unit to cool down and try again.<br>See <b>Grounding and Electrical Requirements</b> on page 7.<br><b>NOTE:</b> Remove extension cord and plug unit directly into outlet. If unit operates correctly, this indicates an extension cord problem.                          |
|                              |                                     | Clean filter, air cooler and cooling fan. Allow unit to cool down and try again.   |
|                              |                                     | Have motor serviced.   |
| No material output from pot. | Pot is empty                        | Refill pot. <b>NOTE:</b> Plate (45) shuts off material flow to prevent air from entering hose.   |
|                              | Not enough pressure to pot          | Shut off air at the gun and increase air pressure to the pot to maximum. Turn regulator clockwise to increase.   |
|                              | Material too thick                  | Thin material.   |
|                              | Clogged pot outlet                  | Inspect; clear.  |
|                              | Gun or nozzle plugged or dry packed | Turn off the fluid supply valve. Relieve fluid pressure from the hose. Remove gun from material hose and slowly open fluid valve.<br><b>Note:</b> A plugged gun or nozzle may cause the hose to plug. If necessary clean hose and gun before cycling material through the hose with the gun removed. |
|                              | Hose plugged or too long            | Relieve pressure. Clean hose or reduce hose length.  |



# Troubleshooting

| PROBLEM   | CAUSE                          | SOLUTION   |
|---|--------------------------------|--|
| Material surges   | Triggering too fast            | Squeeze trigger slowly to open position while moving gun in a circular motion.                                 |
| Speed of application too slow                                   | Material too thick             | Thin material.   |
|   | Not enough air pressure to pot | Shut off air at the gun and increase air pressure to the pot to maximum. Turn regulator clockwise to increase. |
|   | Leaking cover gasket           | Clean or replace gasket.   |
|   | Nozzle too small               | Increase nozzle size.  |
|   | Hose plugged or too long       | Relieve pressure; clean hose or reduce hose length.  |
| Pattern too fine or too much over spray                         | Material too thin              | Thicken material.  |
|   | Air pressure at gun too high   | Decrease air to gun at gun fitting.  |
|   | Material delivery too low      | Increase nozzle size.  |
|   |                                | Increase air pressure to pot and/or decrease air to gun at gun fitting or reduce hose length.                  |
|   |                                | Turn fluid knob out on gun. See <b>Spray Techniques</b> on pages 12 and 13.                                    |
| Pattern too coarse  | Material too thick             | Thin material.   |
|   | Air pressure at gun too low    | Increase air to gun at gun fitting.  |
|   | Material delivery too high     | Decrease nozzle size.  |
|   |                                | Decrease air pressure to pot and/or increase air to gun at gun fitting.  |
| Unloader stuttering, unloading too early, or unloading too late | Damaged unloader               | Replace.   |

# Removing and Reinstalling Compressor

## WARNING





### HOT SURFACE HAZARD

Be sure the compressor duct work is cool before removing it. If the sprayer was operated recently, it will be very hot and can cause burns!

**NOTE:** Clean the cooler whenever the compressor is serviced.

## Removing Compressor

See Fig. 16 and Fig. 17

1.   **Relieve the pressure.** See **Pressure Relief Procedure** on page 6.
2. Remove filter cover (20).
3. Remove two screws (7) and the compressor cover (21).
4. Remove and clean the air filter (G).
5. Remove compressor guard (16).
6. Remove six screws (7) and tool box cover (6).
7. Remove grounding screw (36) and two leads (U) from bottom of switch (9).

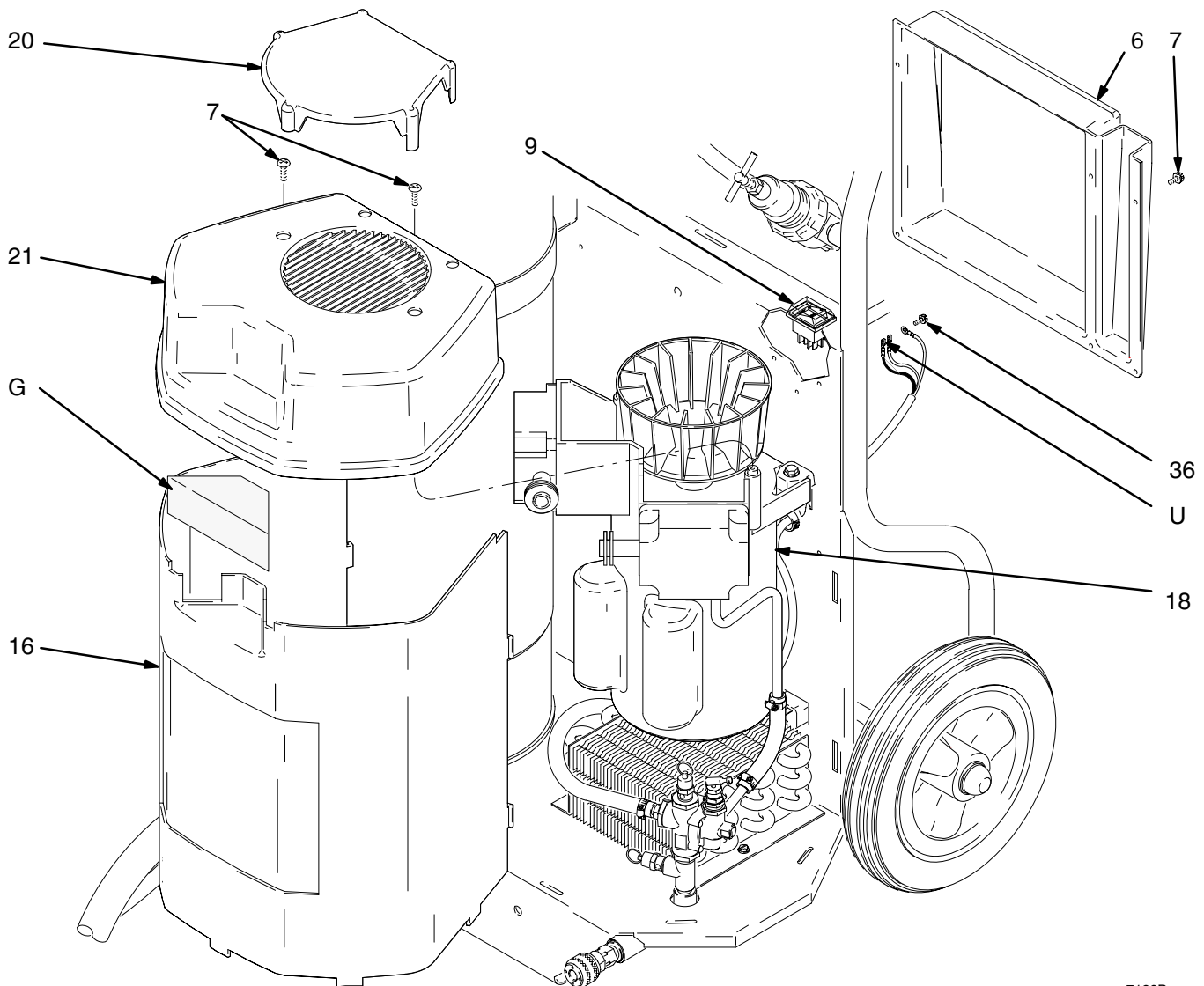


Fig. 16

7129B

# Removing and Reinstalling Compressor

8. Tip TexSpray horizontal.
9. Loosen hose clamps (28) and pull out hose (31).
10. Remove two screws (76) and saddle-mount cups (77).
11. Place a piece of cardboard between compressor and cooler to protect cooler from damage during step 12.
12. Carefully remove compressor wires while lifting compressor up and away from cart frame (1).

## Compressor Repair

If you are rebuilding the compressor (18), see DeVILBISS manual OEM-4000-A.

Graco offers repair kits for the two cylinder compressor. The repair kits are listed in the **Accessories**.

**NOTE:** For repair assistance or for compressor service center locations, call your Graco distributor.

## Reinstalling Compressor

Reassemble sprayer in reverse order of **Removing Compressor**.

**NOTE:** See the **Wiring Diagram** on page 22.

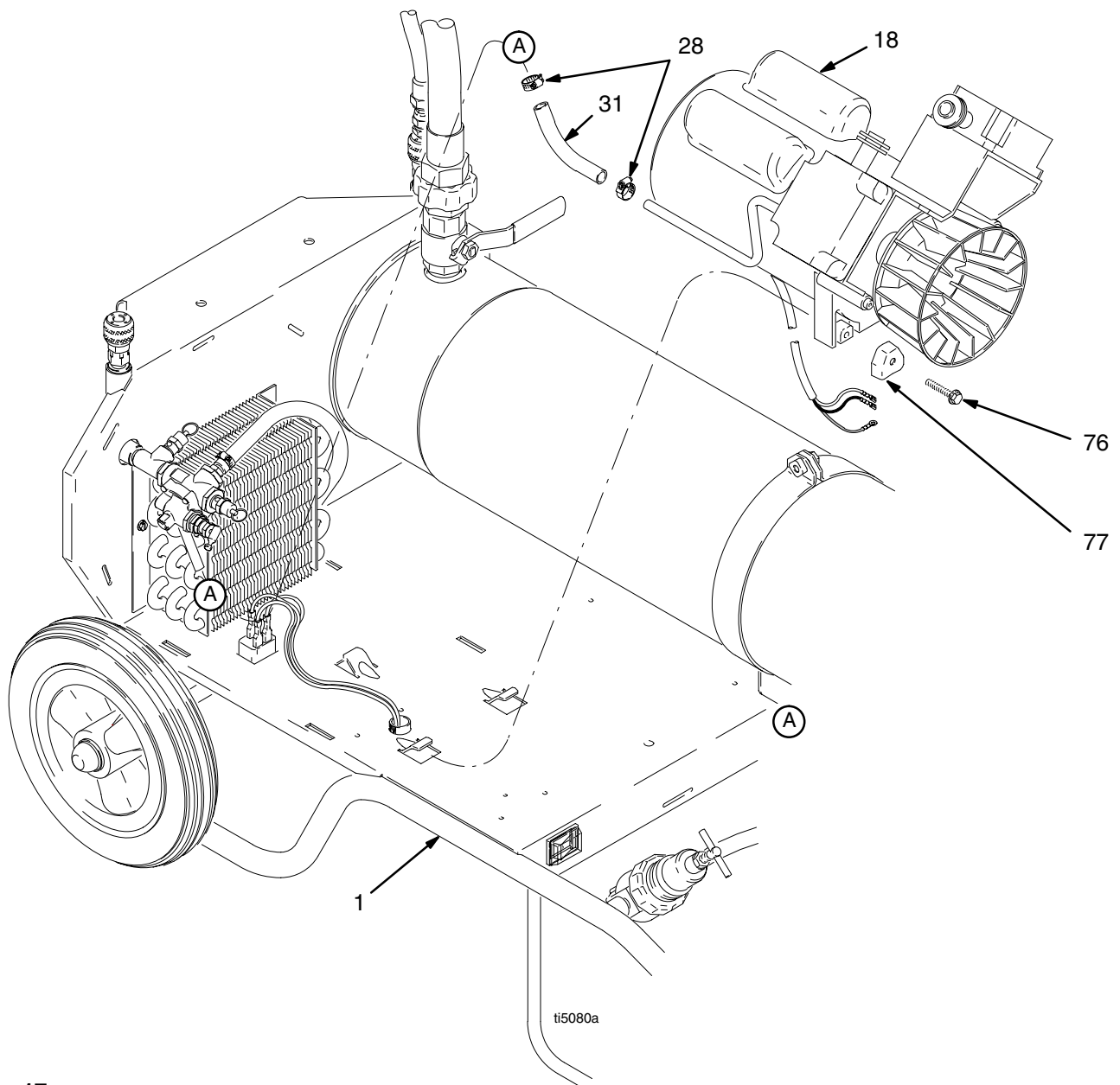


Fig. 17

# Removing and Inspecting Cooler

## WARNING



### HOT SURFACE HAZARD

Be sure the compressor duct work is cool before removing it. If the sprayer was operated recently, it will be very hot and can cause burns!

See Fig. 18



Relieve the pressure.  
See **Pressure Relief Procedure** on page 6.

1. See **Removing Compressor**, beginning on page 18.
2. See **Removing Compressor**, beginning on page 18.
3. Loosen clamp (28) on hose (29), and remove hose from cooler (27).
4. Remove screws (7) and cooler (27). Clean the cooler, and inspect for leaks, dents, and plugging with dust. Replace cooler if necessary.

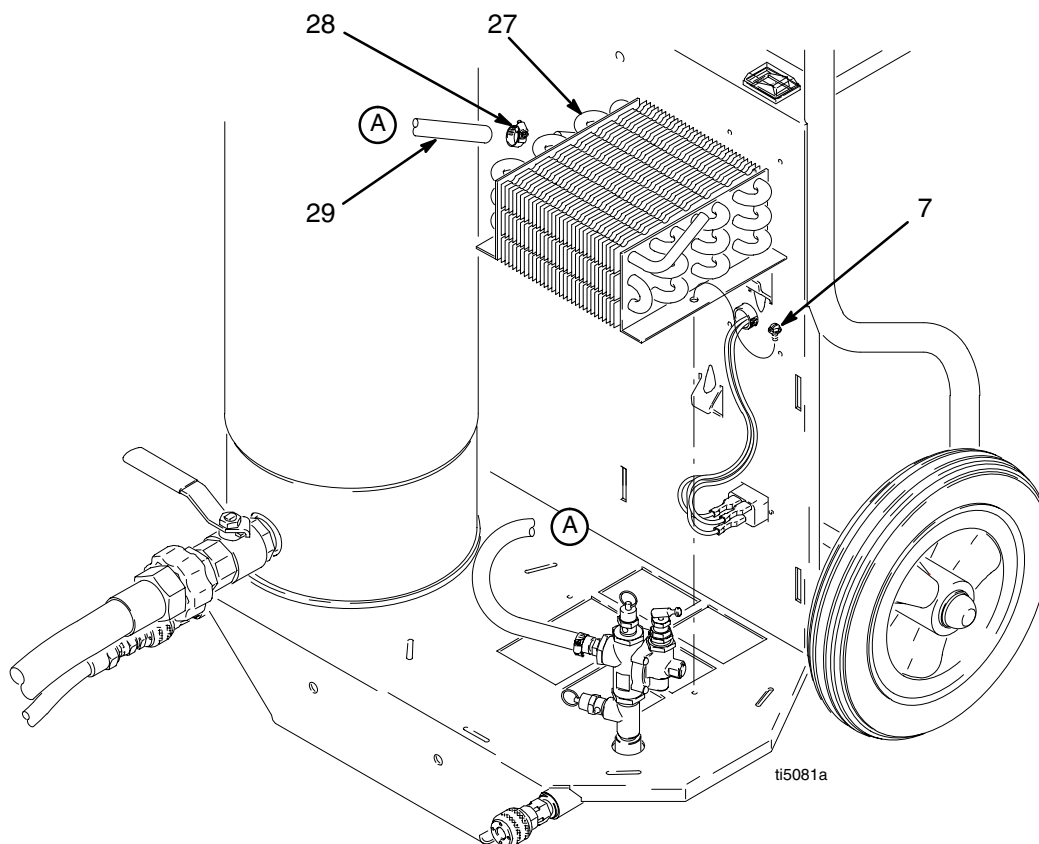
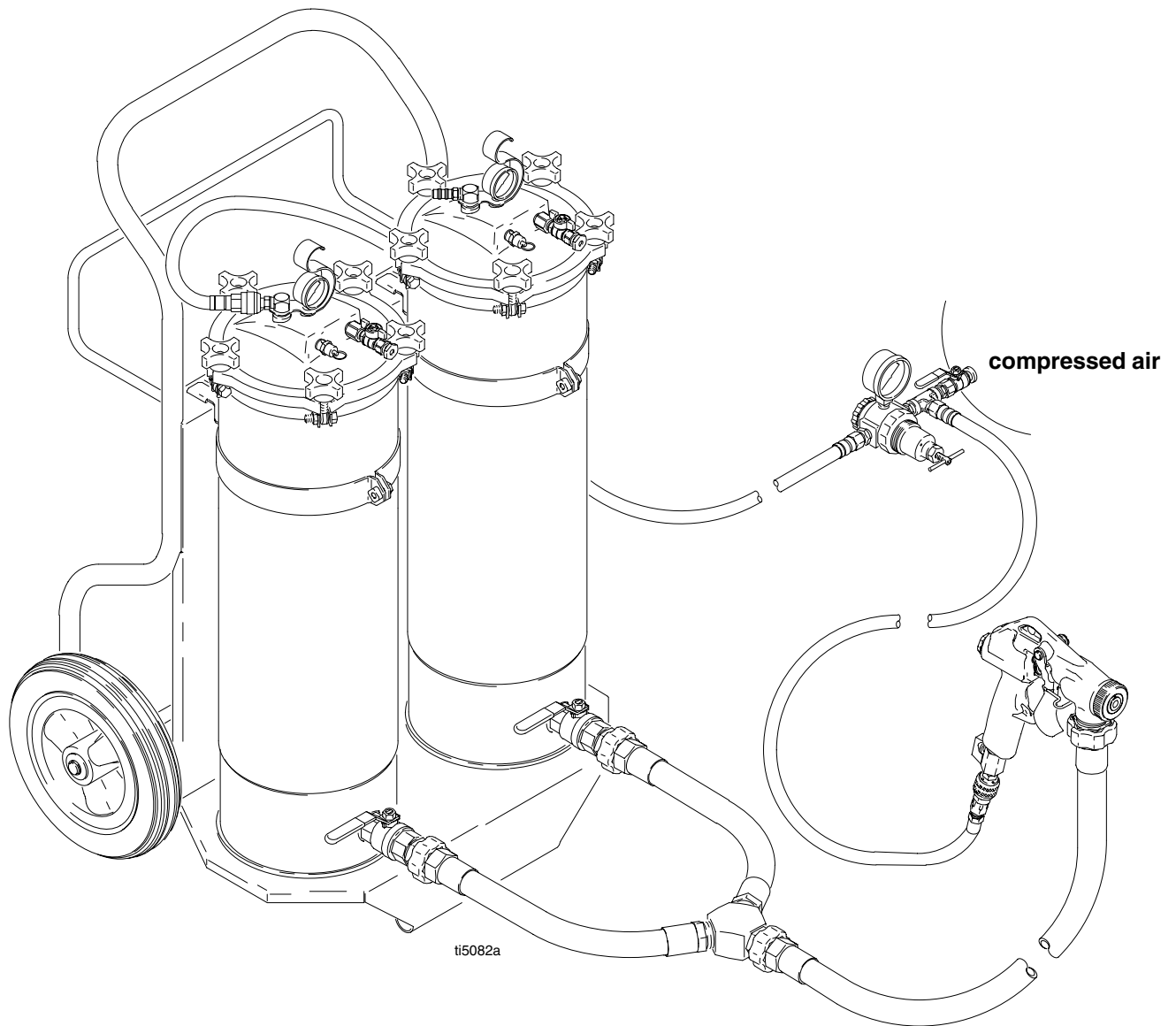


Fig. 18

# Typical Twin Tank Setup

An assembled TexSpray twin-tank system is shown in Fig. 19. Individual parts are shown and listed on page 24.

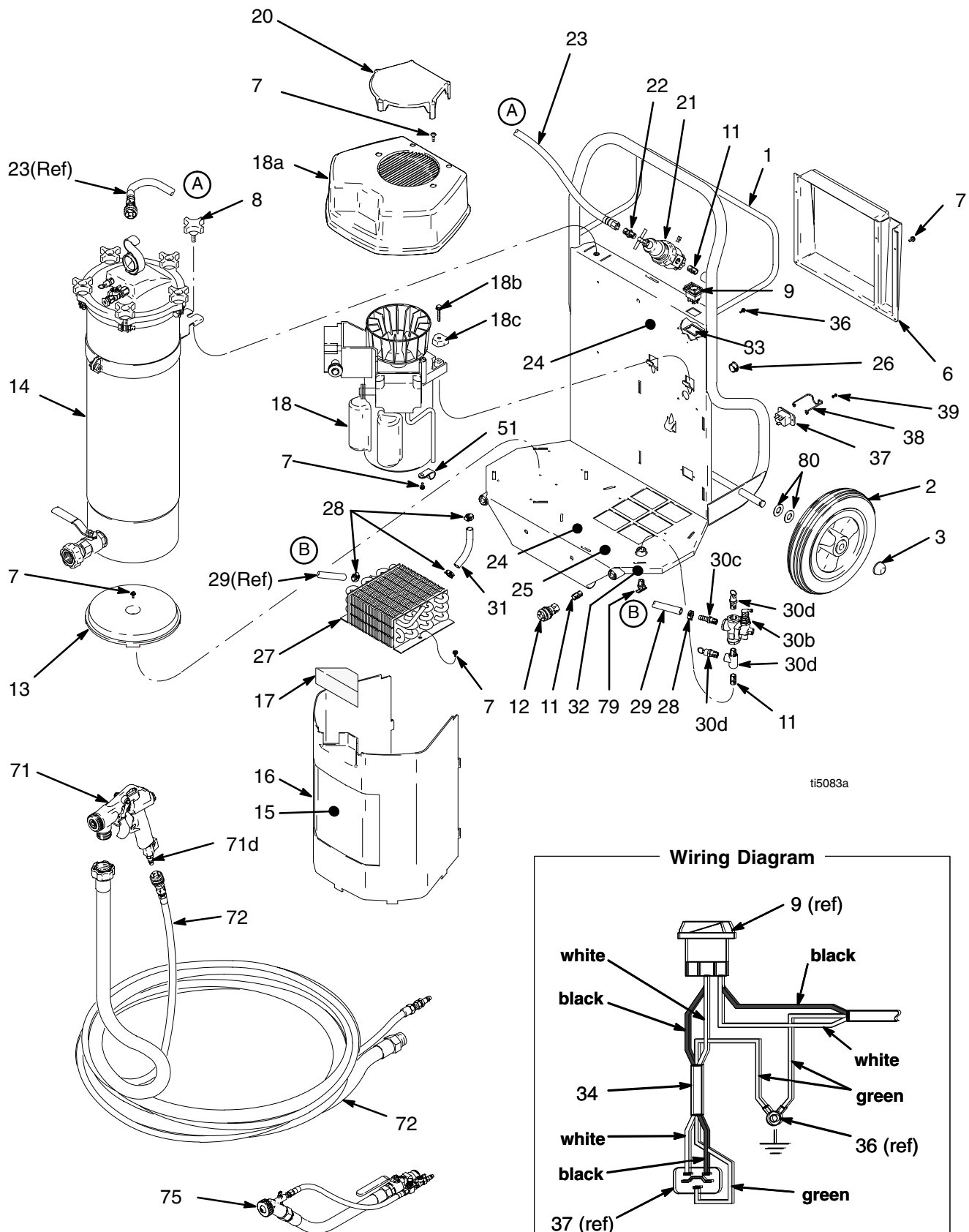


**Fig. 19**

# Parts

## TexSpray EXT HP Sprayer Models 231561 and 231563

(with 1-in. fluid hose, 3/8-in. air hose, and gun)



ti5083a

# Parts

## TexSpray EXT HP Sprayer Models 231561 and 231563

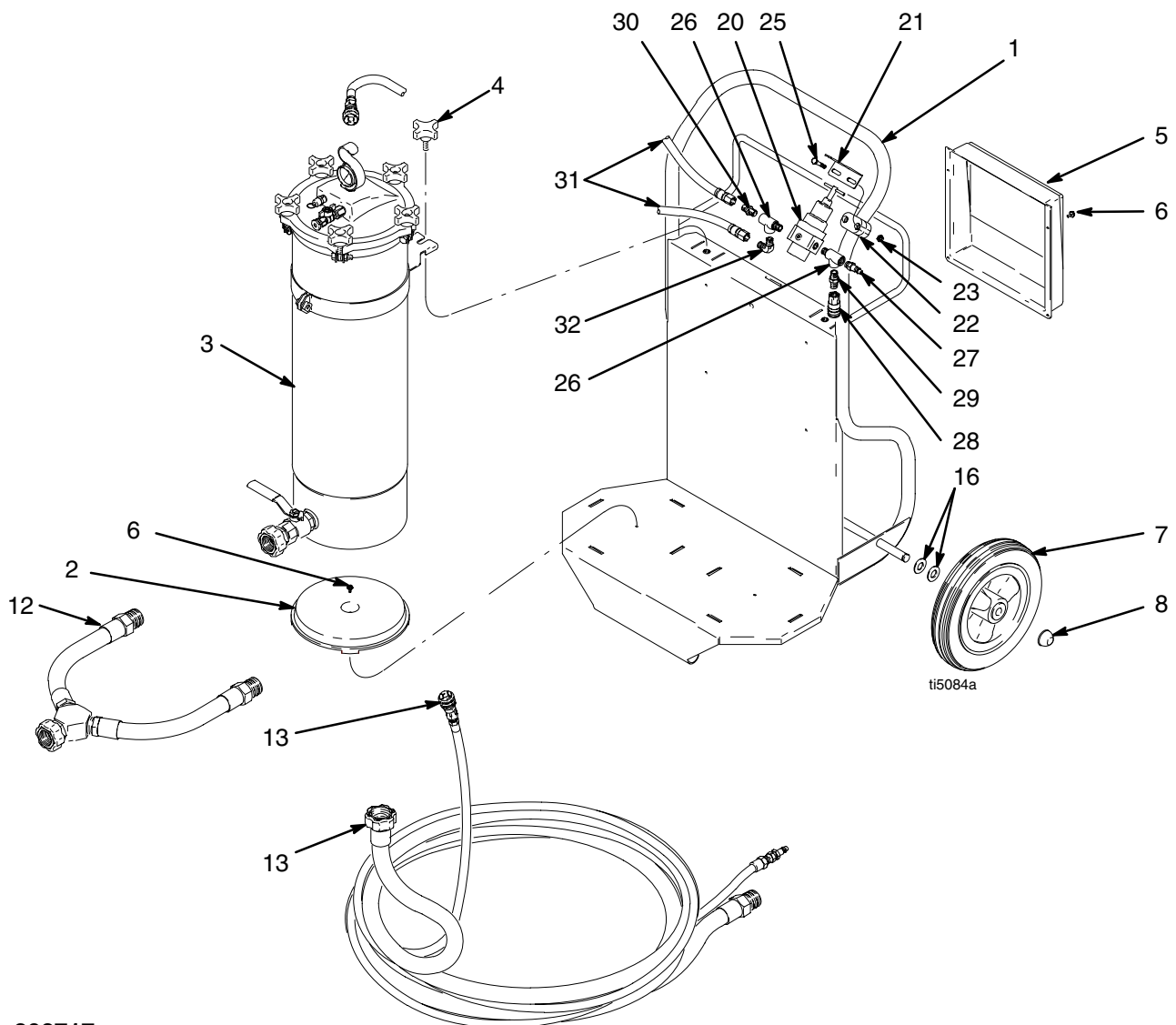
(with 1 in. fluid hose, 3/8 in. air hose, and gun)

| Ref No | Part No. | Description  | Qty | Ref. No.  | Part No. | Description                                     | Qty. |
|--------|----------|--|-----|---|----------|---|------|
| 1      | 192243   | FRAME, TexSpray  | 1   | 31  | 113812   | HOSE, air, 3/8 in. x 3 in.                      | 1    |
| 2      | 113807   | WHEEL, flat-free; urethane                               | 2   | 32  | 290491   | LABEL, instruction                              | 1    |
| 3      | 114817   | CAP, hub   | 2   | 33  | 192249   | CLIP, spring, switch                            | 1    |
| 4▲     | 189265   | LABEL, gun operation; <i>not shown</i>                   | 2   | 34  | 239289   | CONDUCTOR, electrical                           | 1    |
| 6      | 191948   | COVER, tool box  | 1   | 35  | 186620   | LABEL, symbol, ground, <i>not shown</i>         | 1    |
| 7      | 113974   | SCREW, machine, slotted, hex, washer head                | 11  | 36  | 111593   | SCREW, ground, green                            | 1    |
| 8      | 108471   | KNOB, pronged  | 1   | 37  | 113799   | INLET, AC power                                 | 1    |
| 9      | 111961   | SWITCH, rocker, with clip                                | 1   | 38  | 192149   | RETAINER, plug                                  | 1    |
| 11     | 113029   | PIPE, close  | 4   | 39  | 106520   | SCREW, thread forming                           | 2    |
| 12     | 208536   | COUPLER, air line  | 2   | 41  | 290539   | LABEL, caution                                  | 1    |
| 13     | 191942   | BRACKET, tank base                                       | 1   | 43  | 169970   | FITTING, line, air, (m)                         | 1    |
| 14     | 239023   | POT, pressure, <i>see page 25</i>                        | 1   | 45  | 191947   | FLOAT, tank, <i>see page 25</i>                 | 1    |
| 15     | 290393   | LABEL, identification                                    | 1   | 46  | 113397   | BALL, sponge, 30 mm                             | 1    |
| 16     | 191941   | GUARD, compressor  | 1   | 48  | 239290   | CORD SET, 25 ft, USA, 14 AWG                    | 1    |
| 17     | 191945   | FILTER, air  | 1   | 51  | 113491   | CLAMP   | 1    |
| 18     |          | COMPRESSOR, air, twin cylinder, includes 18a through 18c |     | 71  | 248094   | 1 in. GUN KIT ( <i>used on 231761</i> )         | 1    |
|        |          | Model 231561   |     | 71d   | 119394   | . FITTING, air line                             | 1    |
|        | 239743   | 120V, 60 Hz, 15A   | 1   | 72  | 287304   | . HOSE SET, 1 in. fluid hose, 3/8 in. air hose. | 1    |
|        |          | Model 231563   |     | 75  |          | KIT, spray gun                                  |      |
|        | 239744   | 220V, 50 Hz, 12A   | 1   |   | 238080   | FLEXHEAD ( <i>used on 231762</i> )              | 1    |
| 18a    | DAC244   | . SHROUD, front  | 1   |   |          | <i>see manual 308603</i>                        |      |
| 18b    | SSF297   | . SCREW, 1/4 x 1.125 in.                                 | 2   |   | 238807   | POLE GUN, 3 ft ( <i>used on 231763</i> )        | 1    |
| 18c    | ACG18    | . CUP, saddle-mount                                      | 2   |   |          | <i>see manual 308603</i>                        |      |
| 20     | 191944   | COVER, filter  | 1   | 79  | 114041   | VALVE, drain cock                               | 1    |
| 21     | 113406   | AIR REGULATOR  | 1   | 80  | 154636   | . SPACER  | 4    |
| 22     | 162453   | NIPPLE   | 1   | ▲ Replacement Danger and Warning labels, tags and cards are available at no cost. |          |   |      |
| 23     | 113813   | HOSE, air, cpld, 3/8 in. x 25 in.                        | 1   |   |          |   |      |
| 24▲    | 189286   | LABEL, warning   | 2   |   |          |   |      |
| 25     | 189285   | LABEL, caution   | 1   |   |          |   |      |
| 26     | 103394   | BUSHING, snap  | 1   |   |          |   |      |
| 27     | 191940   | COOLER, air  | 1   |   |          |   |      |
| 28     | 113382   | CLAMP, hose  | 4   |   |          |   |      |
| 29     | 113810   | HOSE, air, 3/8 in. x 13 in.                              | 1   |   |          |   |      |
| 30     | 239058   | REGULATOR, unloader assy includes 30a through 30d        | 1   |   |          |   |      |
| 30a    | 106228   | . TEE, street  | 1   |   |          |   |      |
| 30b    | 113809   | . REGULATOR, unloader                                    | 1   |   |          |   |      |
| 30c    | 113385   | . BARB, hose   | 1   |   |          |   |      |
| 30d    | 113811   | . VALVE, safety  | 2   |   |          |   |      |

# Parts

## TexSpray Twin Tank Model 231587 (with 1 in. fluid hose, 3/8 in. air hose, and gun)

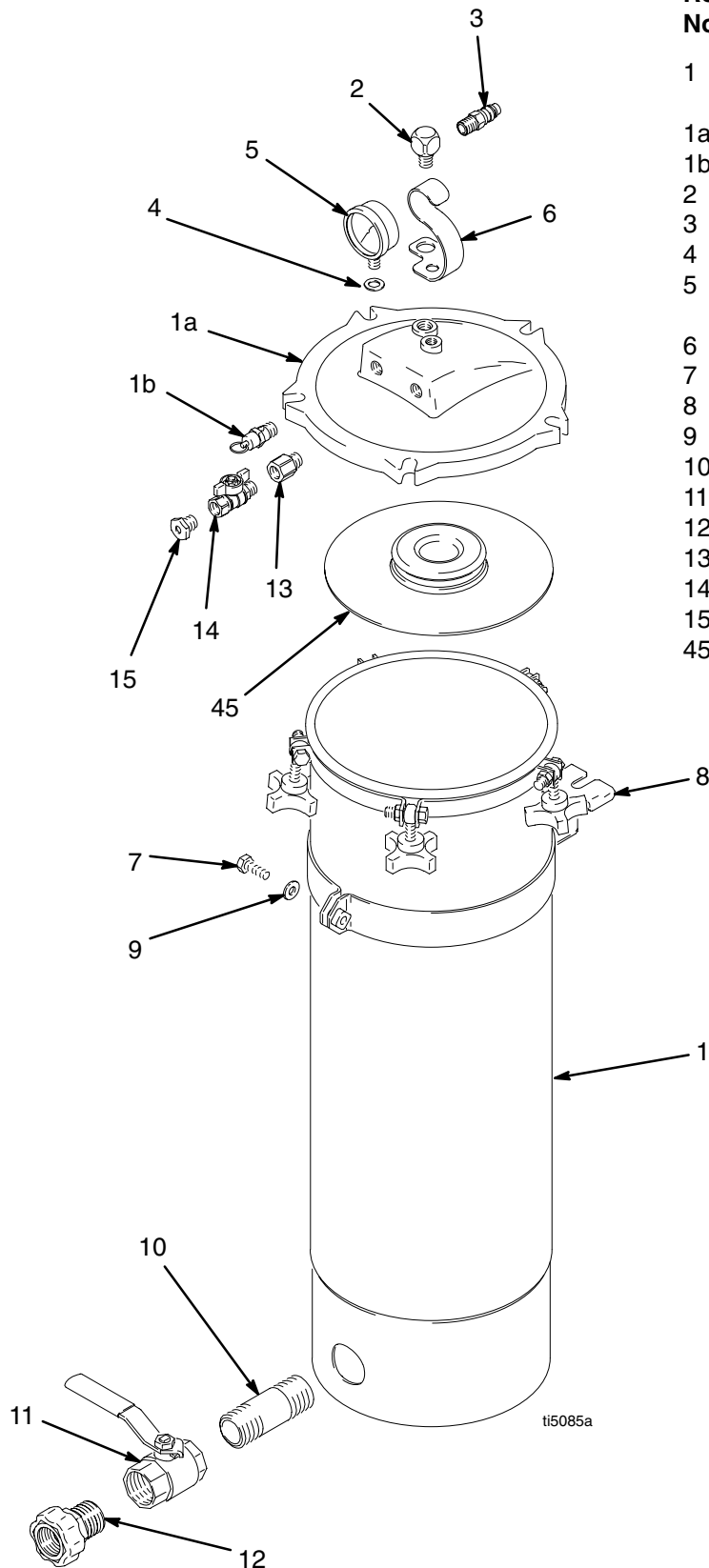
| Ref. No. | Part No. | Description   | Qty. | Ref. No. | Part No. | Description                | Qty. |
|----------|----------|---|------|----------|----------|----------------------------|------|
| 1        | 192244   | FRAME, TexSpray Twin  | 1    | 16       | 154636   | SPACER                     | 4    |
| 2        | 191942   | BRACKET, tank, base   | 2    | 20       | 113406   | REGULATOR                  | 1    |
| 3        | 239023   | POT, pressure, <i>see page 25</i>   | 2    | 21       | 105252   | BRACKET                    | 1    |
| 4        | 108471   | KNOB, pronged   | 2    | 22       | 115089   | CLAMP                      | 1    |
| 5        | 192043   | COVER, tool box   | 1    | 23       | 100015   | NUT, 1/4-20                | 2    |
| 6        | 113974   | SCREW, mch, sltd, hex wash hd   | 6    | 25       | 100058   | SCREW, 1/4-20              | 2    |
| 7        | 113807   | WHEEL, flat free urethane   | 2    | 26       | 106228   | TEE, 1/4 npt               | 1    |
| 8        | 114817   | HUBCAP  | 2    | 27       | 169970   | FITTING, air line          | 1    |
| 11▲      | 189265   | LABEL, gun operation; <i>not shown</i>                                    | 2    | 28       | 114558   | COUPLER, air line          | 1    |
| 12       | 238781   | KIT, Y, two pot   | 1    | 29       | 113029   | NIPPLE, 1/4 npt            | 1    |
| 13       | 287304   | HOSE SET, 1 in. fluid hose,<br>3/8 in. air hose; <i>includes 13a, 13b</i> | 1    | 30       | 162453   | NIPPLE, 1/4 nrsm           | 1    |
| 14       | 113397   | BALL, sponge, 30 mm   | 2    | 31       | 113813   | HOSE, air, coupled, 25 in. | 2    |
| 15       | 191947   | FLOAT, tank, <i>see page 25</i>   | 2    | 32       | 110249   | ADAPTER, male, elbow, 90°  | 1    |





# Parts

## Pressure Pot 239023



| Ref. No. | Part No. | Description   | Qty. |
|----------|----------|---|------|
| 1        | 239037   | POT, pressure<br>Includes items 1a and 1b                     | 1    |
| 1a       | 192019   | .COVER, pressure pot modified                                 | 1    |
| 1b       | 114055   | .VALVE, safety  | 1    |
| 2        | 100840   | ELBOW, street, 1/4 in. npt                                    | 1    |
| 3        | 169970   | FITTING, line, air, (m)                                       | 1    |
| 4        | 113373   | WASHER, spring 10 mm  | 1    |
| 5        | 114045   | GAUGE, press, air, 0 to 160 psi<br>0 to 1.1 MPa, 0 to 11 bar) | 1    |
| 6        | 190938   | GUARD, gauge  | 1    |
| 7        | 100469   | CAPSCREW  | 1    |
| 8        | 239024   | BAND, retaining, pressure pot                                 | 1    |
| 9        | 100731   | WASHER  | 1    |
| 10       | 113120   | NIPPLE, brass, 1 in. npt x 4 in.                              | 1    |
| 11       | 113121   | VALVE, ball   | 1    |
| 12       | 15D985   | COUPLER, Female, 1 in. npt                                    | 1    |
| 13       | 113336   | ADAPTER 1/4 in. npt (m x f)                                   | 1    |
| 14       | 113379   | VALVE, vent, 1/4 in. x 1/4 in.                                | 1    |
| 15       | 113096   | MUFFLER, Valve, Ball  | 1    |
| 45       | 191947   | FLOAT, tank   | 1    |

# Accessories

## **Hose Cleanup Balls**

**238043**

5 sponge rubber balls to help scrub interior surface of hose during cleanup

## **Pole Spray Gun**

**238807**

Rigid 3 ft extension spray gun for spraying hard to reach places.

## **Twin-Tank Hose Kit**

**238781**

Includes the material hose and hardware necessary to connect an additional pressure pot.

## **Fine Finish Kit**

**287227**

Screw-on nozzle adapter for trigger gun for fine knock down or orange peel finish.

## **Connecting Rod Kit**

**239740\***

Service parts kit for compressor connecting rod replacement (includes parts contained in kit 239741).

## **Compressor Cyl/Comp Ring Kit**

**239741\***

Service parts kit for cylinder and compression ring replacement.

\* Two kits are needed for twin cylinder compressor TexSpray Compact HP and TexSpray EXT HP.

## **Compressor Valve Plate Kit**

**239742**

Service parts kit for valve plate assembly. Includes instructions.

## **110V/60Hz Compressor Replacement Kit**

**239743**

Service parts kit for 110V, 60 Hz compressor replacement.

## **220V/50Hz Compressor Replacement Kit**

**239744**

Service parts kit for 220V, 50 Hz compressor replacement.

## **HOSE SETS**

### **25 ft, 1 in. Clear, Braided**

**287304**

Complete hose set for TexSpray units. Material made of clear PVC with nylon braid reinforcing. Light weight standard hose with system.

### **25 ft, 1-1/4 in. Clear**

**287306**

Complete hose set for TexSpray units. Same as 239297 except diameter is 1-1/4 in. Allows greater production rates and longer hose lengths with some texture materials.

# Technical Data

Maximum air and fluid working pressure . . . . . 100 psi  
(0.7 MPa, 7 bar)  
Air pressure operating range . . . . . 25 to 100 psi  
(0.17 to 0.7 MPa, 1.7 to 7 bar)  
Compressor specifications . AC brushless open motor,  
thermally protected, oilless;  
120/240V, 60/50 Hz, 15/13A  
Compressor air consumption . . 11.9 displacement scfm  
8.5 scfm at 40 psi (0.238 m<sup>3</sup>/min at 2.8 bar)  
6.8 scfm at 90 psi (0.19 m<sup>3</sup>/min at 6.3 bar)  
Generator required . . . . . 7 kW  
Pressure pot capacity . . . . . 5 gallons (19 liters)  
Maximum delivery with texture material . . 1 to 1.5 gpm  
(3.8 to 5.7 lpm)

Dimensions  
Length . . . . . 23 in. (584 mm) with handle  
Width . . . . . 24 in. (610 mm)  
Height . . . . . 40 in. (1016 mm)  
Weight  
EXT HP System w/o hoses or gun . . . 124 lb (54 kg)  
EXT HP System with hoses & gun . . . 135 lb (61 kg)  
Twin-Tank System . . . . . 94 lb (32 kg)  
Wetted parts . . . . . acetal, glass-filled acetal,  
buna-N, aluminum, brass, polyethylene  
Sound data  
Sound pressure level \* . . . . . 79 dB(A)  
Sound power level † . . . . . 87.5 dB(A)  
\* Measured while spraying at 1 m.  
† Measured per ISO-3744.

# Graco Warranty

Graco warrants all equipment manufactured by Graco and bearing its name to be free from defects in material and workmanship on the date of sale to the original purchaser for use. With the exception of any special, extended, or limited warranty published by Graco, Graco will, for a period of twelve months from the date of sale, repair or replace any part of the equipment determined by Graco to be defective. This warranty applies only when the equipment is installed, operated and maintained in accordance with Graco's written recommendations.

This warranty does not cover, and Graco shall not be liable for general wear and tear, or any malfunction, damage or wear caused by faulty installation, misapplication, abrasion, corrosion, inadequate or improper maintenance, negligence, accident, tampering, or substitution of non-Graco component parts. Nor shall Graco be liable for malfunction, damage or wear caused by the incompatibility of Graco equipment with structures, accessories, equipment or materials not supplied by Graco, or the improper design, manufacture, installation, operation or maintenance of structures, accessories, equipment or materials not supplied by Graco.

This warranty is conditioned upon the prepaid return of the equipment claimed to be defective to an authorized Graco distributor for verification of the claimed defect. If the claimed defect is verified, Graco will repair or replace free of charge any defective parts. The equipment will be returned to the original purchaser transportation prepaid. If inspection of the equipment does not disclose any defect in material or workmanship, repairs will be made at a reasonable charge, which charges may include the costs of parts, labor, and transportation.

**THIS WARRANTY IS EXCLUSIVE, AND IS IN LIEU OF ANY OTHER WARRANTIES, EXPRESS OR IMPLIED, INCLUDING BUT NOT LIMITED TO WARRANTY OF MERCHANTABILITY OR WARRANTY OF FITNESS FOR A PARTICULAR PURPOSE.**

Graco's sole obligation and buyer's sole remedy for any breach of warranty shall be as set forth above. The buyer agrees that no other remedy (including, but not limited to, incidental or consequential damages for lost profits, lost sales, injury to person or property, or any other incidental or consequential loss) shall be available. Any action for breach of warranty must be brought within two (2) years of the date of sale.

Graco makes no warranty, and disclaims all implied warranties of merchantability and fitness for a particular purpose in connection with accessories, equipment, materials or components sold but not manufactured by Graco. These items sold, but not manufactured by Graco (such as electric motors, switches, hose, etc.), are subject to the warranty, if any, of their manufacturer. Graco will provide purchaser with reasonable assistance in making any claim for breach of these warranties.

In no event will Graco be liable for indirect, incidental, special or consequential damages resulting from Graco supplying equipment hereunder, or the furnishing, performance, or use of any products or other goods sold hereto, whether due to a breach of contract, breach of warranty, the negligence of Graco, or otherwise.

## **FOR GRACO CANADA CUSTOMERS**

The parties acknowledge that they have required that the present document, as well as all documents, notices and legal proceedings entered into, given or instituted pursuant hereto or relating directly or indirectly hereto, be drawn up in English. Les parties reconnaissent avoir convenu que la rédaction du présente document sera en Anglais, ainsi que tous documents, avis et procédures judiciaires exécutés, donnés ou intentés à la suite de ou en rapport, directement ou indirectement, avec les procédures concernées.

## **ADDITIONAL WARRANTY COVERAGE**

Graco does provide extended warranty and wear warranty for products described in the "Graco Contractor Equipment Warranty Program".

# Graco Phone Number

**TO PLACE AN ORDER**, contact your Graco distributor, or call this number to identify the distributor closest to you:  
**1-800-690-2894 Toll Free**

*All written and visual data contained in this document reflect the latest product information available at the time of publication.  
Graco reserves the right to make changes at any time without notice.*

**Sales Offices:** Minneapolis  
**International Offices:** Belgium, Korea, Hong Kong, Japan

**GRACO INC. P.O. BOX 1441 MINNEAPOLIS, MN 55440-1441**

**<http://www.graco.com>**

PRINTED IN U.S.A. 308717 April 1997, Revised 4/2002