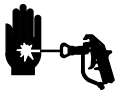


# Pressure Relief Kit 238965

**Model 238965**3000 psi (210 bar, 21.0 MPa) *Maximum Working Pressure*

## ⚠ WARNING

**INJECTION HAZARD**

Fluid under high pressure can be injected through the skin and cause serious injury. To reduce the risk of an injury from injection, splashing fluid, or moving parts, follow the **Pressure Relief Procedure** whenever you:

- are instructed to relieve the pressure,
- stop spraying
- check or service any of the system equipment,
- or install or clean the spray tips.

**Pressure Relief Procedure**

1. Engage the gun safety latch
2. Turn the engine ON/OFF switch to OFF.
3. Flip the pressure control switch to OFF.
4. Disengage the gun safety latch. Hold a metal part of the gun firmly to the side of a grounded metal pail, and trigger the gun to relieve pressure.
5. Engage the gun safety latch.
6. Hold the pressure relief tube firmly to the side of a grounded metal pail, and open the pressure relief valve. Leave the valve open until you are ready to spray again.
7. Disconnect the spark plug cable to prevent the system from starting unexpectedly.

## ⚠ WARNING

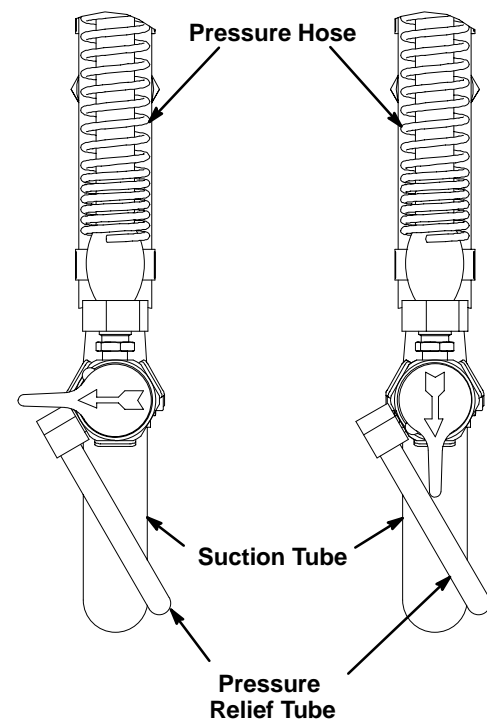
**FIRE AND EXPLOSION HAZARD**

Before operating or flushing the pump, ground the system per instructions in the separate pump and gun instruction manuals

*If you suspect that the spray tip or hose is completely clogged, or that pressure has not been fully relieved after following the steps above, **very slowly** loosen the tip guard retaining nut or hose end coupling and relieve pressure gradually, then loosen completely.*

Valve shown in  
**CLOSED** position.

Valve shown  
in **OPEN** position.

**Fig. 1**

06877

# Pressure Relief Valve Replacement

## Disassembly (Fig. 2)

### WARNING

To reduce the risk of serious injury whenever you are instructed to relieve pressure, always follow the **PRESSURE RELIEF PROCEDURE**.

1. **Relieve the pressure.**
2. Note the location of the three wire straps (A) on the suction hose (B). Cautiously remove the straps to avoid damaging the suction hose.

3. Remove the spring clips (C) from the suction tube (D).
4. Remove the drain tube (E) from the elbow connector (F) on the pressure drain valve (G).
5. Disconnect the elbow connector (F) from the pressure drain valve (G).
6. Remove the pressure drain valve (G) from the bottom of the fluid filter (H).
7. Clean the base of the fluid filter (H) to remove any paint buildup or debris.

## Reassembly (Fig. 3)

**NOTE:** This kit is shipped with two tubing clamps. If you are using Linestriper Model 231132, 231140, 231149, or 231151 select the clamp marked 1 (7). If you are using Linestriper Model 231133, 231141, 231150, 231152, or 213337 select the clamp marked 2 (8).

1. Spread the clamp (7 or 8) just enough to allow it to slip onto the suction tube (D).
2. Position the clamp (7 or 8) so that its top surface is horizontal, and tighten the nut (2) and bolt (1) at the base of the clamp just enough to prevent it from rotating.
3. Place the pressure relief valve bracket (9) on top of the clamp (7 or 8) with the anti-rotational tab near the end of the suction hose (B).
4. Apply thread-lock (3) uniformly to the threads of the machine screw (6) and fasten the pressure relief bracket (9) to the tubing clamp (7 or 8).
5. Insert the pressure relief valve (12) into the bracket (9) mounted on the suction tube (D) with the valve inlet fitting directly above the anti-rotational tab.
6. Slide the clamp (7 or 8) along the suction tube (D) until the pressure relief tube lies along the side of the suction tube in a manner that allows both tubes to easily fit in the slot in the pail cover.

7. Firmly tighten the locknut (2) and screw (1) at the base of the clamp (7 or 8) to hold the assembly in place.
8. Apply thread sealant (5) to the 1/4" npt threads of the npt-nps(m) adapter fitting (10).
9. Tighten the npt threads of the nipple (10) into the base of the fluid filter (H).
10. Connect one end of the high pressure hose (11) to the nps(m) threads of the nipple (10).
11. Route the high pressure hose (11) along the suction hose (B) to prevent it from contacting the spraying surface. Loosely strap the high pressure hose to the suction hose with the wire tie straps (4) in the approximate locations shown.
12. Connect the free end of the high pressure hose (11) to the nps(m) inlet fitting on the pressure relief valve (12).
13. Slide the wire tie straps (4) to their final positions and tighten them.
14. Reconnect the spark plug cable.
15. Pressurize the system and check for leaks.

### WARNING

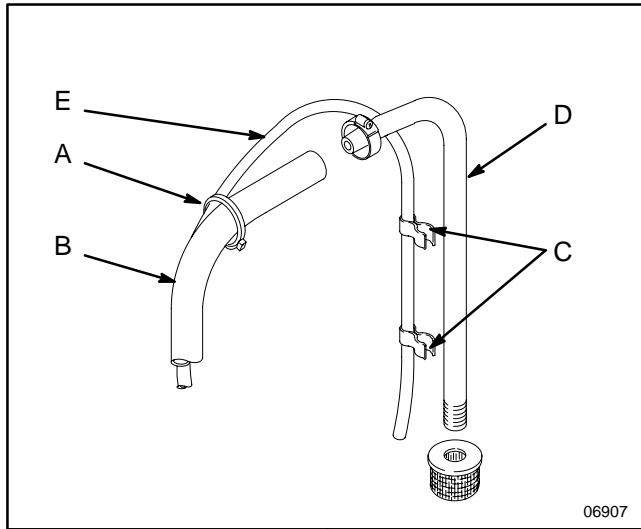
To reduce the risk of serious injury, follow the **PRESSURE RELIEF PROCEDURE** before tightening any fittings.

## Parts List

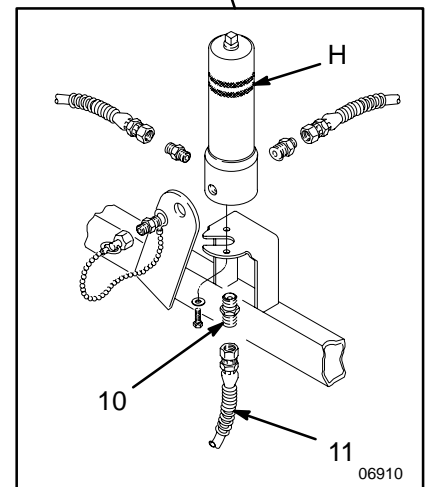
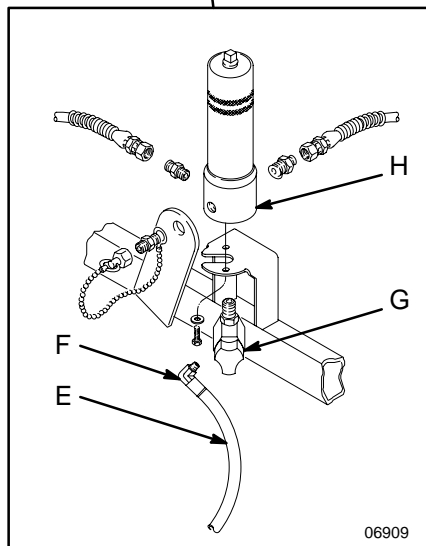
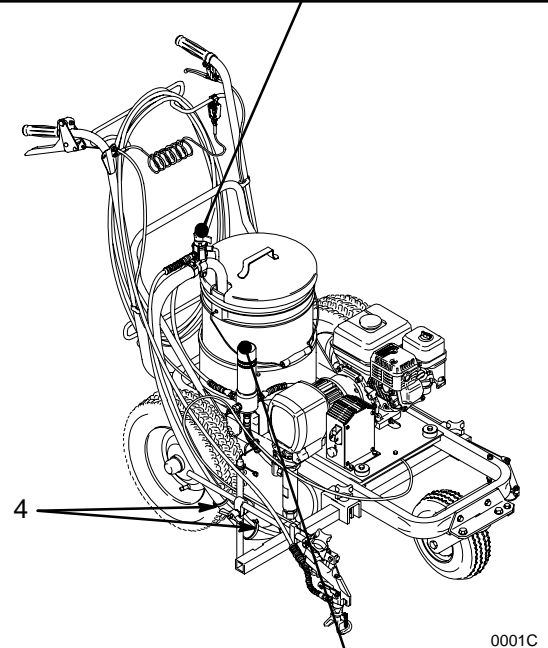
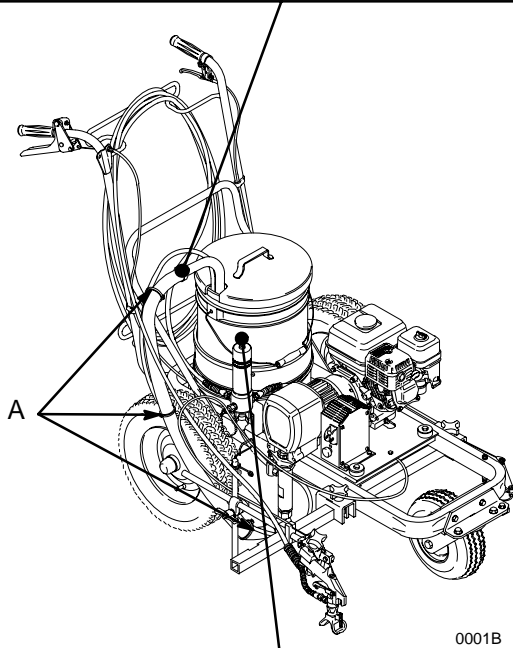
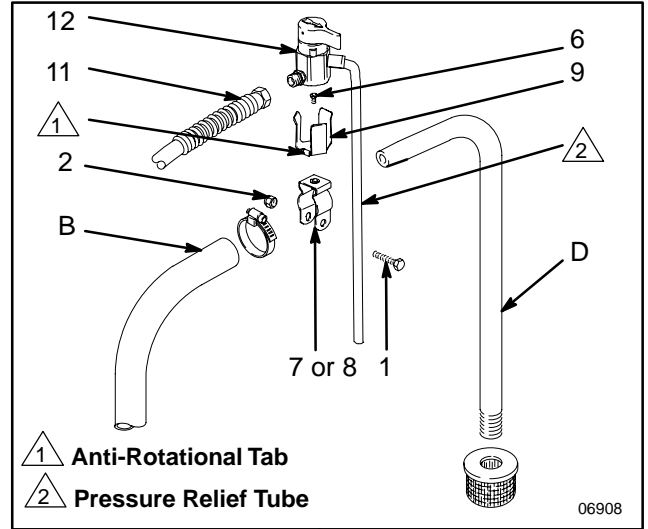
Ref. No.	Part No.	Description	Qty.	Ref. No.	Part No.	Description	Qty.
1	100014	SCREW, cap, hex hd	1	7	113790	CLAMP, 3/4" Marked as 1	1
2	102040	NUT, lock	1	8	113791	CLAMP, 1" Marked as 2	1
3	102969	LOCTITE, red	1	9	191874	BRACKET, pressure relief	1
4	103473	TIE, wire	2	10	162453	NIPPLE	1
5	119400	LOCTITE, SST	1	11	277300	HOSE, cpld, 3/16" x 4.5"	1
6	113789	SCREW, mach	1	12	238960	VALVE, pressure relief	1
2	308701						

# Pressure Relief Valve Replacement

**Before Installation**



**After Installation**



**Fig. 2**

**Fig. 3**

# The Graco Warranty and Disclaimers

## WARRANTY

Graco warrants all equipment listed in this manual which is manufactured by Graco and bearing its name to be free from defects in material and workmanship on the date of sale to the original purchaser for use. Graco will, for a period of twelve months from the date of sale, repair or replace any part of the equipment determined by Graco to be defective. This warranty applies only when the equipment is installed, operated and maintained in accordance with Graco's written recommendations.

This warranty does not cover, and Graco shall not be liable for general wear and tear, or any malfunction, damage or wear caused by faulty installation, misapplication, abrasion, corrosion, inadequate or improper maintenance, negligence, accident, tampering, or substitution of non-Graco component parts. Nor shall Graco be liable for malfunction, damage or wear caused by the incompatibility of Graco equipment with structures, accessories, equipment or materials not supplied by Graco, or the improper design, manufacture, installation, operation or maintenance of structures, accessories, equipment or materials not supplied by Graco.

This warranty is conditioned upon the prepaid return of the equipment claimed to be defective to an authorized Graco distributor for verification of the claimed defect. If the claimed defect is verified, Graco will repair or replace free of charge any defective parts. The equipment will be returned to the original purchaser transportation prepaid. If inspection of the equipment does not disclose any defect in material or workmanship, repairs will be made at a reasonable charge, which charges may include the costs of parts, labor, and transportation.

**THIS WARRANTY IS EXCLUSIVE, AND IS IN LIEU OF ANY OTHER WARRANTIES, EXPRESS OR IMPLIED, INCLUDING BUT NOT LIMITED TO WARRANTY OF MERCHANTABILITY OR WARRANTY OF FITNESS FOR A PARTICULAR PURPOSE.**

Graco's sole obligation and buyer's sole remedy for any breach of warranty shall be as set forth above. The buyer agrees that no other remedy (including, but not limited to, incidental or consequential damages for lost profits, lost sales, injury to person or property, or any other incidental or consequential loss) shall be available. Any action for breach of warranty must be brought within two (2) years of the date of sale.

**GRACO MAKES NO WARRANTY, AND DISCLAIMS ALL IMPLIED WARRANTIES OF MERCHANTABILITY AND FITNESS FOR A PARTICULAR PURPOSE IN CONNECTION WITH ACCESSORIES, EQUIPMENT, MATERIALS, OR COMPONENTS SOLD BUT NOT MANUFACTURED BY GRACO.** These items sold, but not manufactured by Graco (such as electric motors, switches, hose, etc.) are subject to the warranty, if any, of their manufacturer. Graco will provide purchaser with reasonable assistance in making any claim for breach of these warranties.

### For Sales to Canadian Customers:

Except as expressly stated herein, Graco makes no representations, warranties or conditions, express, implied or collateral, concerning any goods or services sold, and **GRACO SHALL NOT BE LIABLE IN ANY MANNER FOR** any other representation, warranty or condition of any kind, whether arising by operation of law or otherwise, including but not limited to, **WARRANTIES OF MERCHANTABILITY OR FITNESS FOR A PARTICULAR PURPOSE.**

## LIMITATION OF LIABILITY

In no event will Graco be liable for indirect, incidental, special or consequential damages resulting from Graco supplying equipment hereunder, or for the furnishing, performance, or use of any products or other goods sold hereto, whether due to a breach of contract, breach of warranty, the negligence of Graco, or otherwise.

# Graco Phone Number

**TO PLACE AN ORDER**, contact your Graco distributor, or call this number to identify the distributor closest to you: **1-800-690-2894 Toll Free**

*All written and visual data contained in this document reflects the latest product information available at the time of publication. Graco reserves the right to make changes at any time without notice.*

**Graco Headquarters:** Minneapolis  
**International Offices:** Belgium, Korea, China, Japan

**GRACO INC. P.O. BOX 1441 MINNEAPOLIS, MN 55440-1441**

11/1996, Rev 5/2006