

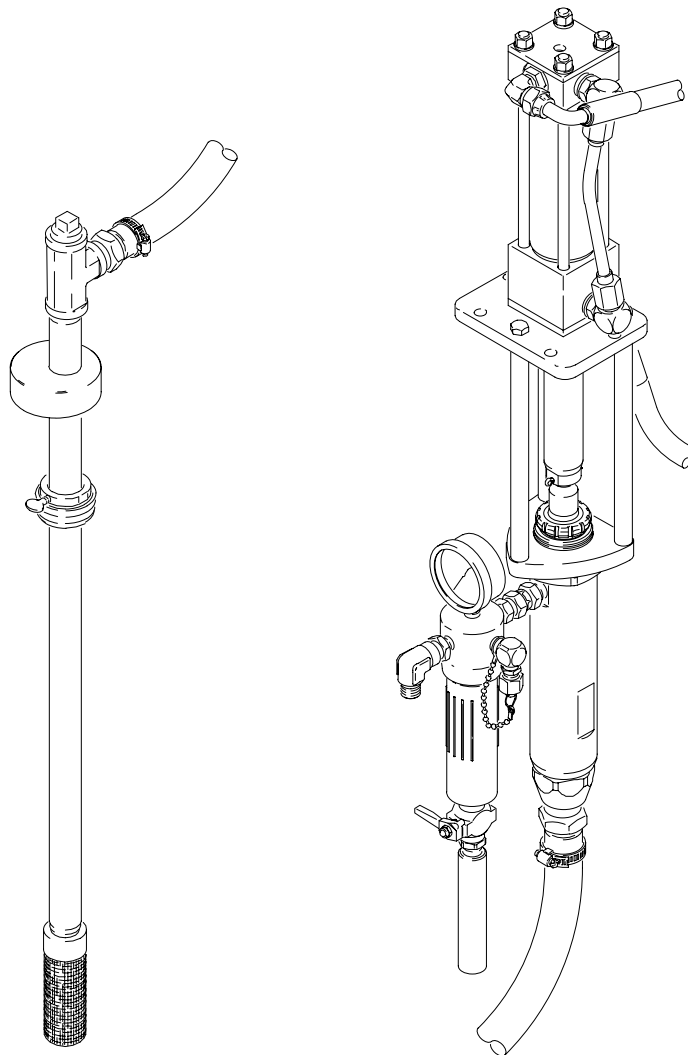
**INSTRUCTIONS**

KEEP FOR REFERENCE.
Read manual 308611 for important
warnings and instructions.

RoadLazer

Second Color Kit

2000 psi (138 bar, 13.8 MPa) Maximum Working Pressure

Model 239041

7534C

GRACO INC. P.O. BOX 1441 MINNEAPOLIS, MN 55440-1441

©COPYRIGHT 1997, GRACO INC.

Graco Inc. is registered to I.S. EN ISO 9001

Installation

Introduction

The Second Color Kit is designed to increase existing Road Lazer System capability by adding an additional pump and supporting accessories. The Second Color Kit can be added to an existing Road Lazer with one or two pumps.

Pressure Relief Procedure

WARNING



INJECTION HAZARD

The system pressure must be manually relieved to prevent the system from starting or spraying accidentally. Fluid under high pressure can be injected through the skin and cause serious injury. To reduce the risk of an injury from injection, splashing fluid, or moving parts, follow the **Pressure Relief Procedure** in your sprayer manual whenever you:

- are instructed to relieve the pressure,
- stop spraying,
- check or service any of the system equipment,
- or install or clean the spray tip.

1. Flush the system. See **Flush System** in manual 308611.
2. Relieve pressure. See **Pressure Relief Procedure** in manual 308611.

General Instructions

The following paragraphs provide instructions for installing the Second Color Kit components on the Road Lazer Striper. Refer to Figs. 1 thru 4 for installation. See Fig. 5 for parts list. The schematics on pages 10 and 11 provide additional detail and orientation information for installation. Index numbers with an A are kit parts. Other index numbers are parts for the Road Lazer.

Installation of Pump, Fluid Filter, and Paint Hose

1. See Figs. 1 and 2. Install kit pump (A01) by placing in open space in pump mount base (413) next to installed pump. Attach with four capscrews (A24) and four locknuts (A15).
2. Attach fluid filter assembly (A02) to pump nipple (A23).

3. See Fig. 3. Connect one end of coupled hose (A38) to swivel union (A04) on fluid filter. Route hose along protection tube (5) to second gun (341). Use tie straps (A37) to secure hose to tube.
4. Remove spare pipe plug from second gun (341). Attach hose to spare gun inlet using swivel union (A04) and ball valve (A39).

Installation of Pump Hydraulic Components

1. See Fig. 4. Install flow regulator (A26) on valve manifold (84).
2. Remove pipe plug next to installed ball valve (91) on top of manifold. Install kit ball valve (A27), pipe elbow (A28), straight nipple (A30), and coupled hose (A31).
3. Route and attach hose to connection at bottom of pump.
4. Install hydraulic hose from top of pump to hydraulic reservoir. Remove existing pipe plug from street tee (97) or elbow (102) on top of reservoir and connect hose (A32).

Syphon Setup For 2 Pump Configuration

1. See Figs. 1 and 3. Attach coupled hose (A20) from paint syphon to inlet on pump using fitting (A13) and clamp (A21).

One color setup: Attach both hoses to one suction tube.

Two color setup: Attach each hose to a single suction tube.

Syphon Setup For 3 Pump Configuration

1. See Figs. 2 and 3. For 3 pump configuration, set-up syphons as shown in Figs. 2 and 3.

Complete Installation

WARNING

For safe operation of this equipment, see manual 308611 for important warnings and instructions.

1. After installing kit, flush system to prepare for painting. See **Flush System** in manual 308611.

Installation

Setup for 2 Pump Configuration

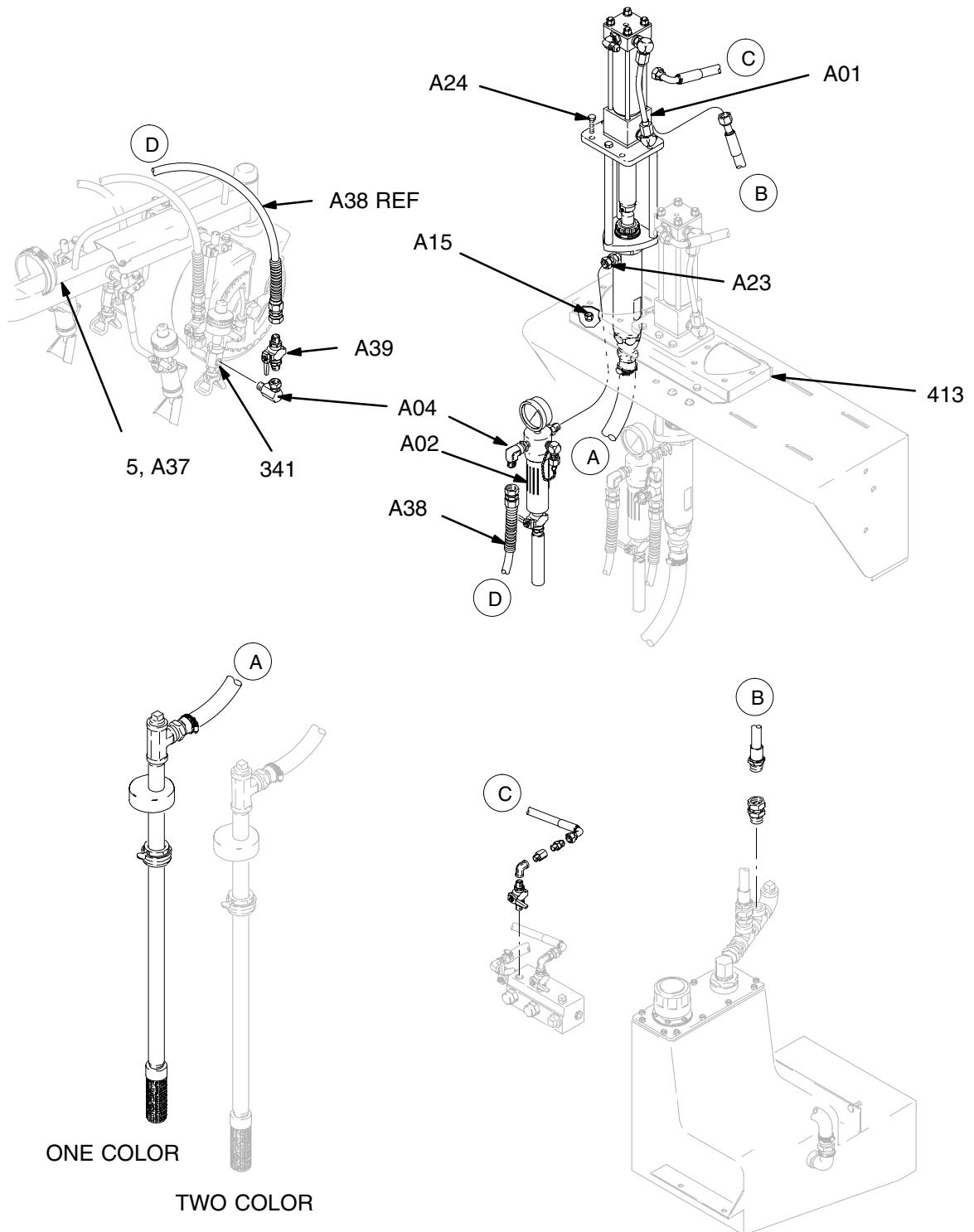


Fig. 1

7535C

Installation

Setup for 3 Pump Configuration

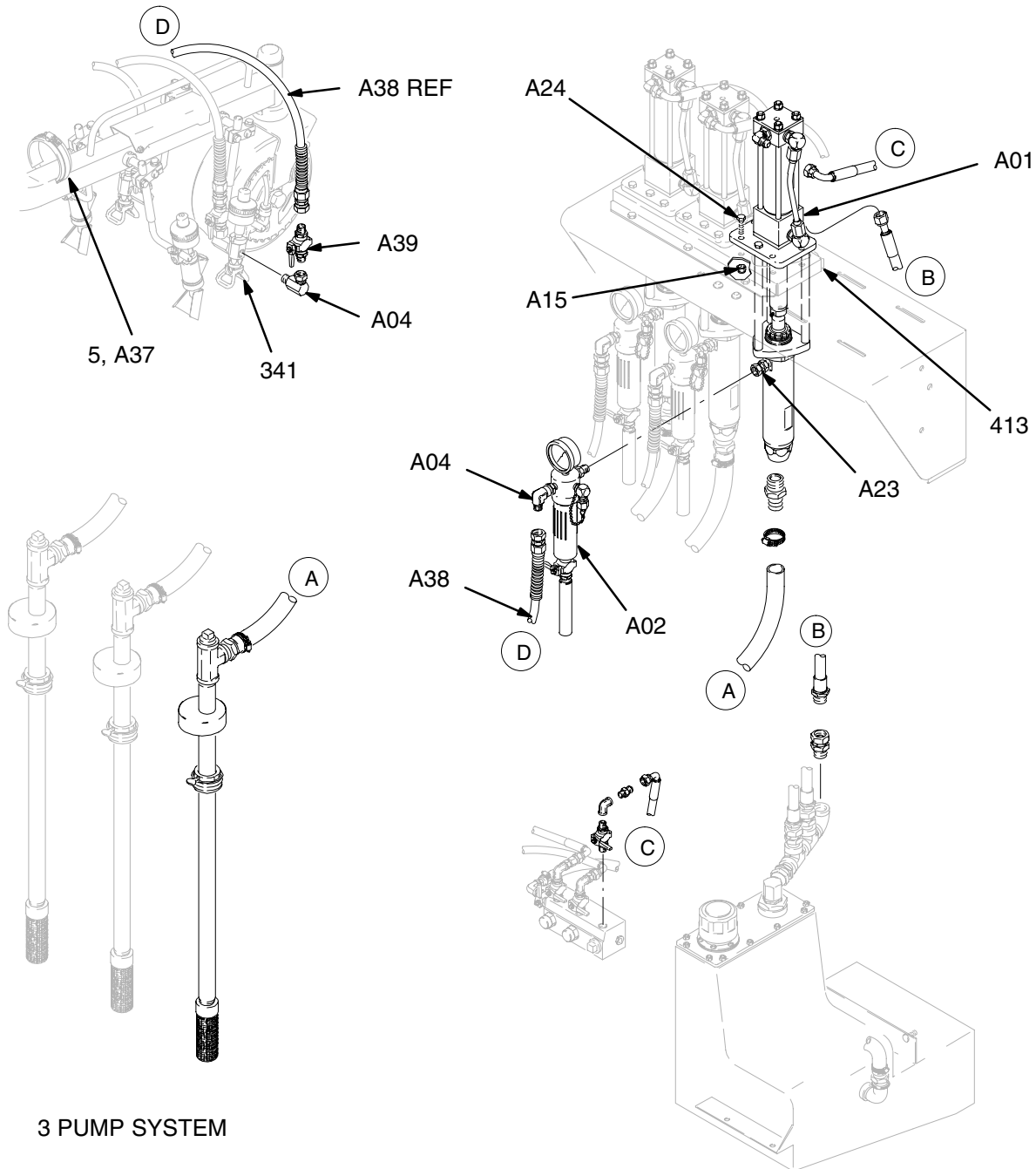


Fig. 2

7536C

Installation

Paint Hose, Syphon Setup, and Routing for 2 or 3 Pump System

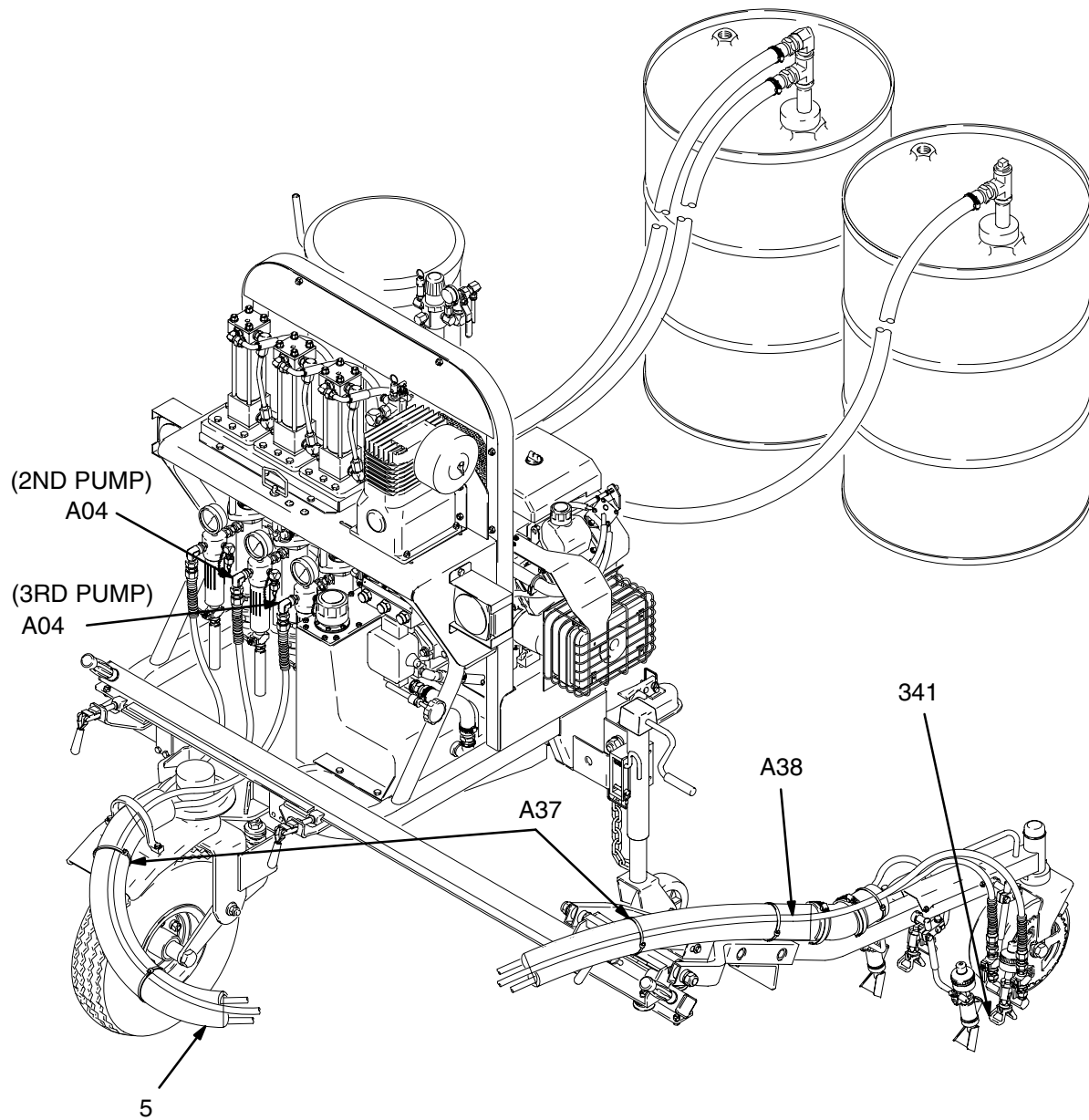


Fig. 3

7537C

Installation

Hydraulic Components for 2nd or 3rd Pump Installation

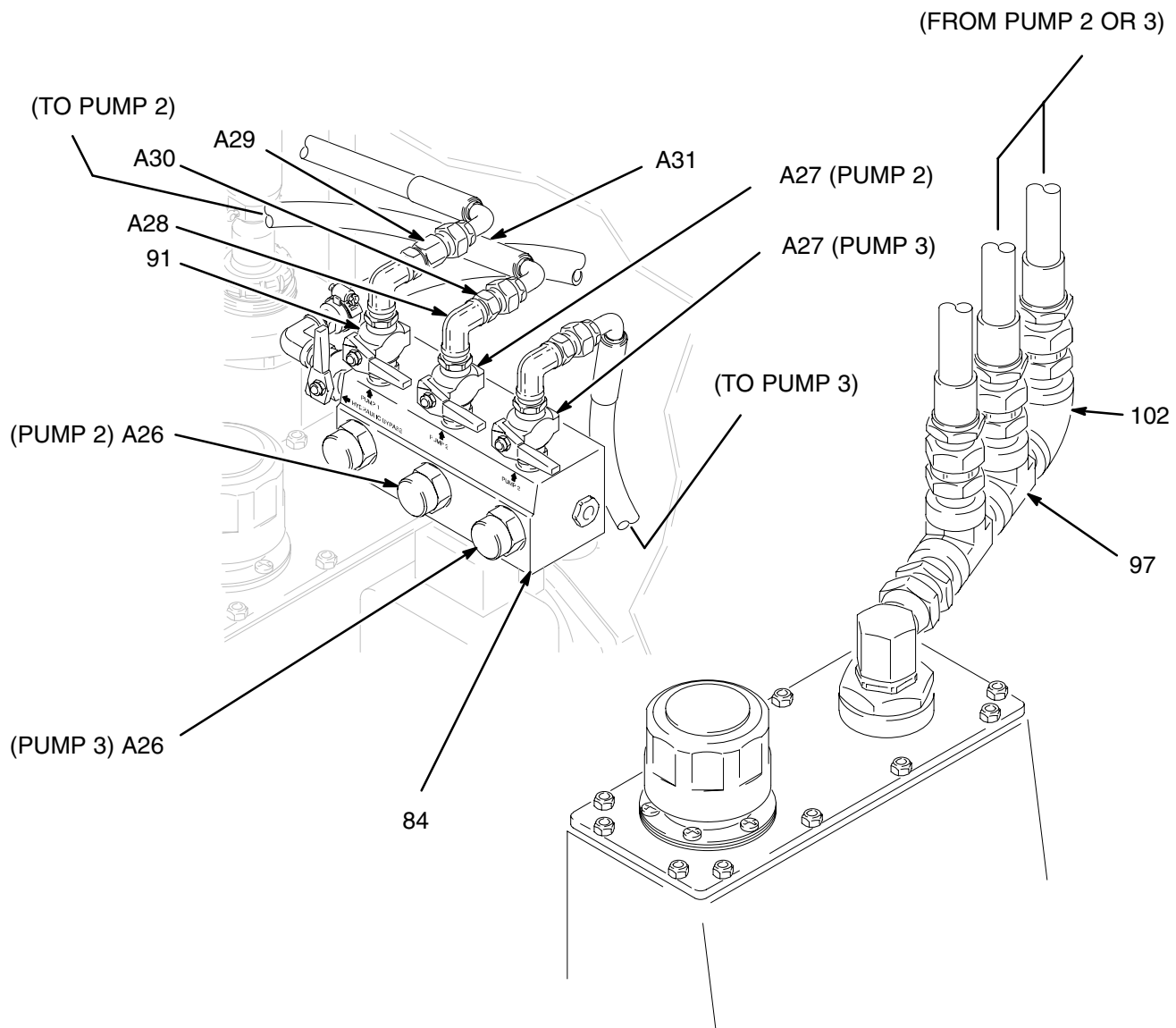


Fig. 4

7538A

Notes

[illegible]

Parts List

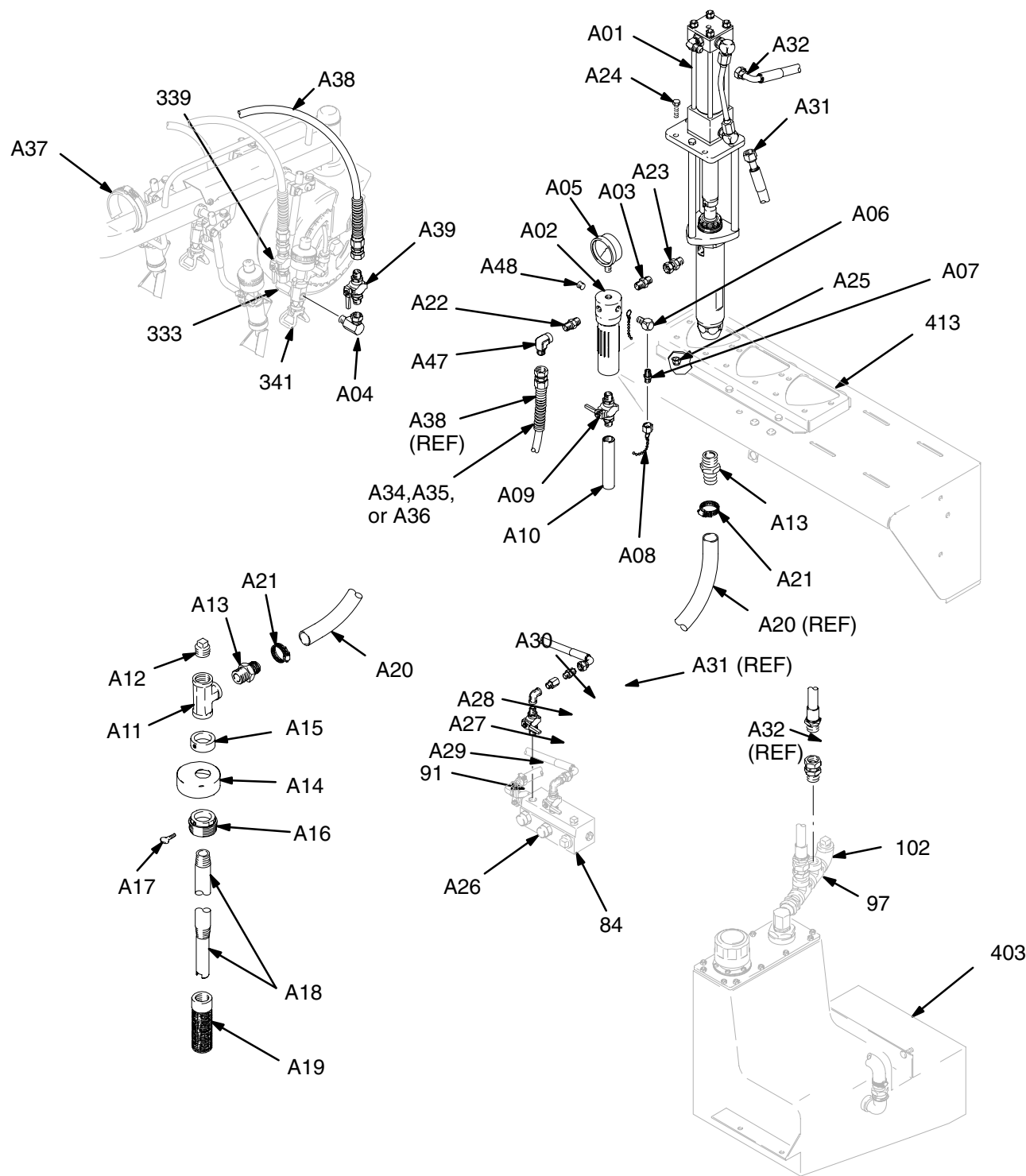


Fig. 5

TI0434B

Parts List

Second Color Kit Parts

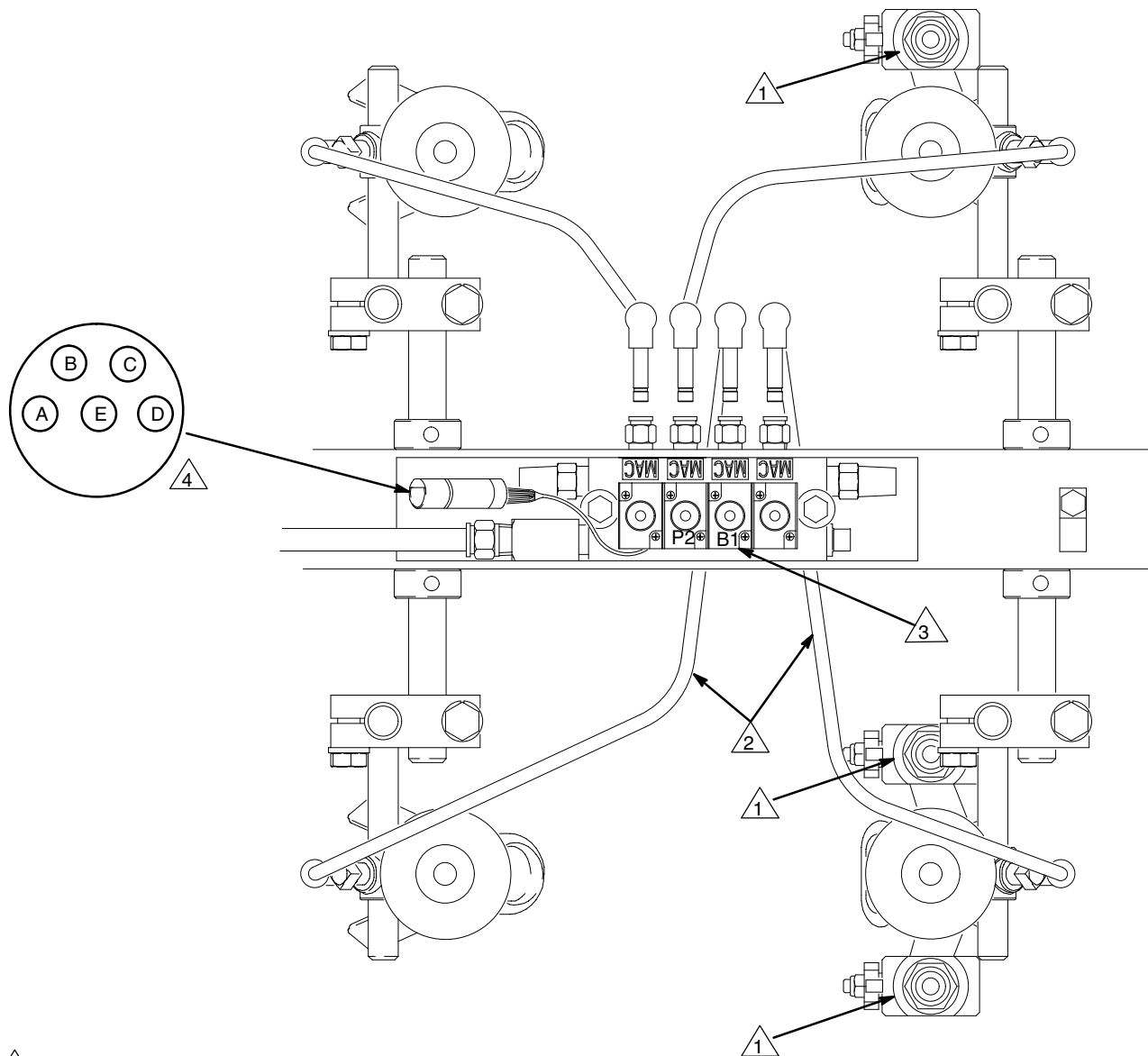
Ref. No.	Part No.	Description	Qty
A01	238349	PUMP, paint	1
A02	238782	FILTER, fluid, sst	1
A03	166469	NIPPLE, 3/8 in. npt x 3/8 in.	1
A04	207123	UNION, swivel, 90°	1
A05	102814	GAUGE, pressure, fluid	1
A06	166866	ELBOW, 90°, sst, 1/4 npt x 1/4 npt, 1–11/32 in. (34 mm) long	1
A07	166846	NIPPLE, 1/4 in. npt x 1/4 in. npsm, 1–3/16 in. (31 mm) long, sst	1
A08	220285	CAP	1
A09	238967	VALVE, ball	1
A10	191731	PIPE, pump, extension	1
A11	113606	TEE, 1 in., 1/2 npt	1
A12	113561	PLUG, pipe, 1 in., 1/2 npt	1
A13	113607	FITTING, barb 1 in., 1/2 npt	2
A14	191641	CAP, splash	1
A15	113797	COLLAR, screw, set	1
A16	176684	ADAPTER, bung	1
A17	100220	SCREW, thumb, grade 5	1
A18	191624	TUBE, suction	1
A19	191635	STRAINER, inlet	1
A20	191627	HOSE, suction	1
A21	101818	CLAMP, hose	2
A22	501684	CHECK VALVE, 3/8 in. x 3/8 in., sst	1
A23	235208	UNION, adapter, swivel, 3/8 in. npt(m) x 3/8 in. npsm(f)	1
A24	100004	CAPSCREW, hex hd, grade 5 3/8–16 unc–2a, 1–1/4 in. (32 mm) long	4
A25	101566	LOCKNUT, nylon, 3/8–16	4
A26	113703	REGULATOR, hydraulic flow	1
A27	210658	VALVE, ball	1
A28	165472	ELBOW, pipe, 90°; 3/8 npt(f)	1
A29	150286	ADAPTER	1
A30	110311	NIPPLE, straight; 3/8–18 npt(f) x 3/4–16 unf	1
A31	191645	HOSE, coupled, 24 in.	1
A32	191647	HOSE, coupled, 27 in.	1
A34	054163	TUBE, polyolefin, shrinkable x 8 in.	1
A35	054747	TUBE, polyolefin, shrinkable x 8 in.	1
A36	054748	TUBE, polyolefin, shrinkable x 8 in.	1
A37	108774	STRAP, tie	10
A38	191239	HOSE, coupled, 11 ft 6 in.	1
A39	238694	VALVE, ball	1
A47	112026	ELBOW, street, 3/8 npt	1
A48	101748	PLUG, 3/8 npt	1

Road Lazer Parts

Ref. No.	Part No.	Description	Qty
84	192045	MANIFOLD, valve	1
91	210658	VALVE, ball	1
97	111337	TEE, street, 3/4 npt–14 npt(f)	2
102	113671	ELBOW, 3/4–14 npt(f)	1
333	207123	UNION, swivel, 90°, 3/8 in. npsm(f) x 3/8 in. npt(m)	1
339	238694	VALVE, ball	1
341	238332	GUN, spray, auto <i>See Manual 308613 for parts</i>	2
403	238787	RESERVOIR, hydraulic	1
413	191248	BASE, pump mount	1

Schematics

Paint Hose Connections



1 Paint hose connections

2 Pneumatic lines

3 Solenoid air valves

4 Electrical connector J6
to Programmable Skip-
line Controller

(A) Paint gun (P1) (B) Paint gun (P2)

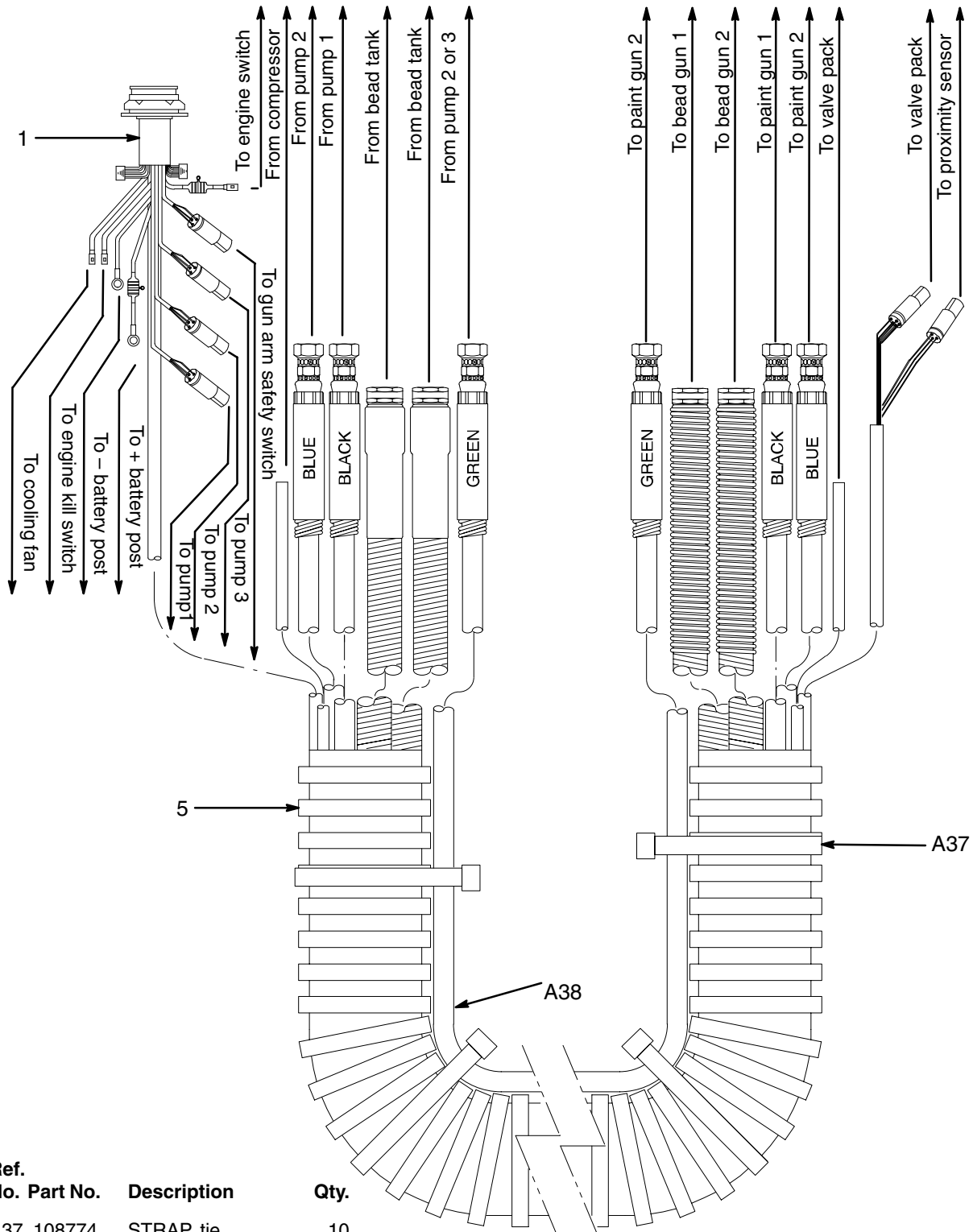
(C) Bead gun (B1) (D) Bead gun (B2)

(E) + 12 Vdc

06266A

Schematics

Main Harness 238680



Ref.	No.	Part No.	Description	Qty.
A37	108774		STRAP, tie	10
A38	191239		HOSE, coupled, 11 ft, 6in.	1
1	113486		CABLE, power	1
5	191857		TUBE, protection	1

7540A

Graco Warranty

Graco warrants all equipment manufactured by Graco and bearing its name to be free from defects in material and workmanship on the date of sale by an authorized Graco distributor to the original purchaser for use. With the exception of any special, extended, or limited warranty published by Graco, Graco will, for a period of twelve months from the date of sale, repair or replace any part of the equipment determined by Graco to be defective. This warranty applies only when the equipment is installed, operated and maintained in accordance with Graco's written recommendations.

This warranty does not cover, and Graco shall not be liable for general wear and tear, or any malfunction, damage or wear caused by faulty installation, misapplication, abrasion, corrosion, inadequate or improper maintenance, negligence, accident, tampering, or substitution of non-Graco component parts. Nor shall Graco be liable for malfunction, damage or wear caused by the incompatibility of Graco equipment with structures, accessories, equipment or materials not supplied by Graco, or the improper design, manufacture, installation, operation or maintenance of structures, accessories, equipment or materials not supplied by Graco.

This warranty is conditioned upon the prepaid return of the equipment claimed to be defective to an authorized Graco distributor for verification of the claimed defect. If the claimed defect is verified, Graco will repair or replace free of charge any defective parts. The equipment will be returned to the original purchaser transportation prepaid. If inspection of the equipment does not disclose any defect in material or workmanship, repairs will be made at a reasonable charge, which charges may include the costs of parts, labor, and transportation.

THIS WARRANTY IS EXCLUSIVE, AND IS IN LIEU OF ANY OTHER WARRANTIES, EXPRESS OR IMPLIED, INCLUDING BUT NOT LIMITED TO WARRANTY OF MERCHANTABILITY OR WARRANTY OF FITNESS FOR A PARTICULAR PURPOSE.

Graco's sole obligation and buyer's sole remedy for any breach of warranty shall be as set forth above. The buyer agrees that no other remedy (including, but not limited to, incidental or consequential damages for lost profits, lost sales, injury to person or property, or any other incidental or consequential loss) shall be available. Any action for breach of warranty must be brought within two (2) years of the date of sale.

Graco makes no warranty, and disclaims all implied warranties of merchantability and fitness for a particular purpose in connection with accessories, equipment, materials or components sold but not manufactured by Graco. These items sold, but not manufactured by Graco (such as electric motors, switches, hose, etc.), are subject to the warranty, if any, of their manufacturer. Graco will provide purchaser with reasonable assistance in making any claim for breach of these warranties.

In no event will Graco be liable for indirect, incidental, special or consequential damages resulting from Graco supplying equipment hereunder, or the furnishing, performance, or use of any products or other goods sold hereto, whether due to a breach of contract, breach of warranty, the negligence of Graco, or otherwise.

FOR GRACO CANADA CUSTOMERS

The parties acknowledge that they have required that the present document, as well as all documents, notices and legal proceedings entered into, given or instituted pursuant hereto or relating directly or indirectly hereto, be drawn up in English. Les parties reconnaissent avoir convenu que la rédaction du présente document sera en Anglais, ainsi que tous documents, avis et procédures judiciaires exécutés, donnés ou intentés à la suite de ou en rapport, directement ou indirectement, avec les procédures concernées.

ADDITIONAL WARRANTY COVERAGE

Graco does provide extended warranty and wear warranty for products described in the "Graco Contractor Equipment Warranty Program".

Graco Phone Number

TO PLACE AN ORDER, contact your Graco distributor, or call this number to identify the distributor closest to you:
1-800-690-2894 Toll Free

*All written and visual data contained in this document reflects the latest product information available at the time of publication.
Graco reserves the right to make changes at any time without notice.*

Sales Offices: Minneapolis
International Offices: Belgium, Korea, Hong Kong, Japan

GRACO INC. P.O. BOX 1441 MINNEAPOLIS, MN 55440-1441
<http://www.graco.com>

PRINTED IN U.S.A. 308699 July 1997, Revised 10/2004