

INSTRUCTIONS-PARTS LIST



308678

Rev. C



INSTRUCTIONS

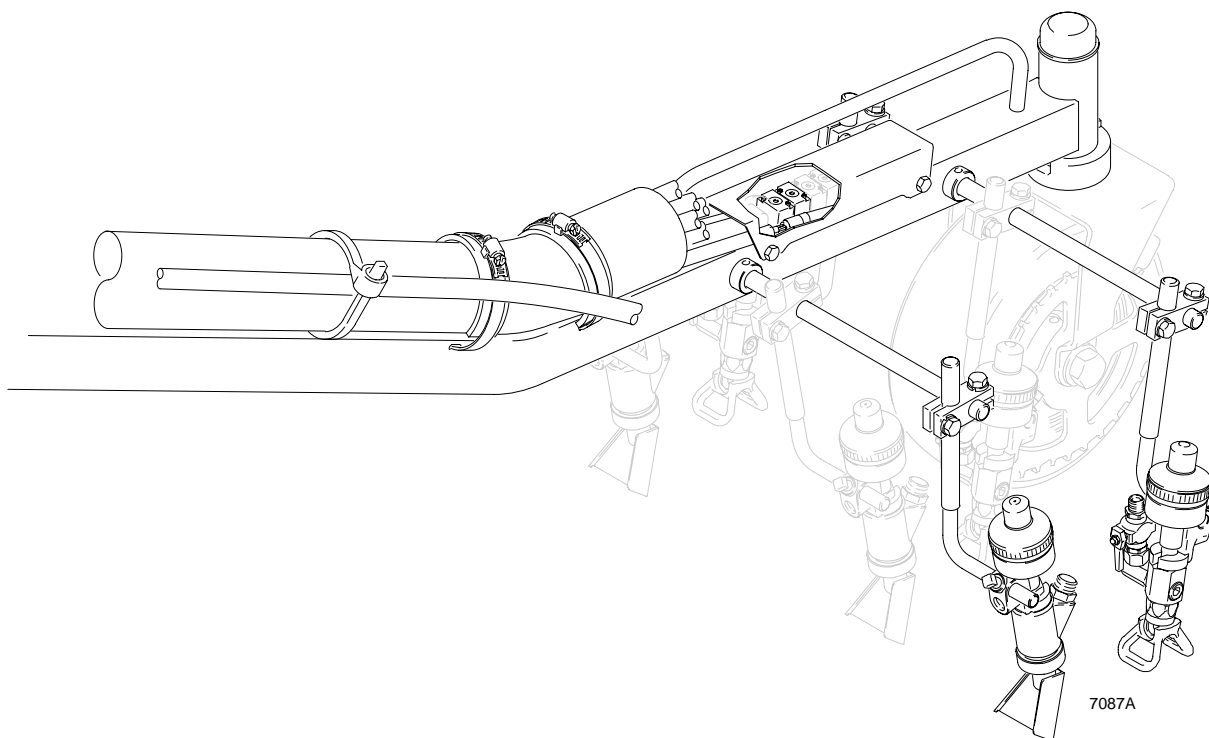
KEEP FOR REFERENCE.

Read manual 308611 for important warnings and instructions.

Road Lazer

Third Gun Kit

Model 244275



GRACO INC. P.O. BOX 1441 MINNEAPOLIS, MN 55440-1441

©COPYRIGHT 1997, GRACO INC.

Graco Inc. is registered to I.S. EN ISO 9001

Installation

Pressure Relief Procedure

WARNING



INJECTION HAZARD

The system pressure must be manually relieved to prevent the system from starting or spraying accidentally. Fluid under high pressure can be injected through the skin and cause serious injury. To reduce the risk of an injury from injection, splashing fluid, or moving parts, follow the **Pressure Relief Procedure** in your sprayer manual whenever you:

- are instructed to relieve the pressure,
- stop spraying,
- check or service any of the system equipment,
- or install or clean the spray tip.

1. Flush the system. See **Flush System** in manual 308611.
2. Relieve pressure. See **Pressure Relief Procedure** in manual 308611.

General Instructions

The following paragraphs provide instructions for installing the third Gun Kit components on the Road Lazer Line Striper. Refer to Fig. 1 for parts identification information and schematics on pages 6 through 8 for detail orientation and wiring. Index numbers with an A are kit parts. Other index numbers are parts for the Road Lazer.

Installation of Bead Hose

1. Remove pipe plug (63) from bead tank fitting (54) at base of bead tank (53) and discard. Replace with bead hose fitting (A13).
2. Connect one end of bead hose (A14) to hose fitting.
3. Route bead hose along Road Lazer frame to boom beam (312). Fasten hose to main harness protection tube (5) using wire tie straps (A15). See schematics on pages 6 and 7.

Installation of Solenoid Valves

1. Access solenoid valves (343) by removing access cover (319), pins (316), washers (317) and nuts (318).
2. Mark or label boom beam (312), air fittings (346), elbow fittings (346), and hoses (338) to indicate first and second paint guns (341); and first and second bead guns (334). Labels and marks will be used to reassemble items in correct order. Notice boom beam already has holes for added fittings.

NOTE: Order of guns, looking along boom beam toward wheel end are as follows: first paint and bead guns are on left side of beam, second paint and bead guns are on right side of beam. For orientation of boom beam, solenoid valves, fittings, and guns see schematic on page 6 .

3. Remove hoses, elbow fittings, and air fittings from solenoid valves.
4. Disconnect solenoid valves electrical connector J6 from harness electrical connector P6.
5. Remove solenoid valves, capscrews (344), washers, (317), nuts (318), and air fitting (362).
6. Carefully remove air fitting end of solenoid valve stack (343). Add two solenoid valves (A03) with supplied hardware. Refasten air fitting end to solenoid valve stack.
7. Replace solenoid valves by aligning with holes in boom beam. Reconnect air fitting (362), capscrews, washers, and nuts.
8. Reconnect solenoid valves connector J6 to harness connector P6.
9. Connect each set of wires from two added solenoid valves to harness connector wires P7. See schematic on page 8.

NOTE: Its not important which set of connector wires from the solenoid valves are connected to the harness connector wires P7.

10. Replace existing air fittings, elbow fittings and hoses as marked and labeled in step 2.

NOTE: Do not install fittings on new solenoid valves at this time.

Installation

Installation of Third Paint and Third Bead Guns

1. Remove third paint hose swivel union (333) and ball valve (339) from second paint gun (341). Replace with pipe plug (A04).
2. Note positions and orientation of guns and hoses. See schematic on page 6.
3. Slide existing paint and bead guns off gun pivot arms (335) by loosening support clamps (342).
4. Remove both gun pivot arms (335) and discard. Replace with new gun pivot arms (A16) and secure.
5. Remount paint and bead guns and orient per schematic diagram on page 6. Secure support clamps.
6. Mount third paint gun (A02) and mounting arm (A09) on pivot arm next to second paint gun. Secure with arm support clamp (A10), attaching screws (A11) and washers (A12). Attach paint hose.
7. Install tube elbow fitting (A08) on third paint gun and attach one end of 1/4 in. air hose (A05) to fitting.
8. Mount third bead gun (A01) and mounting arm (A09) on pivot arm next to second bead gun. Secure with support clamp, attaching screws, and washers.
9. Install hose bead fitting (A13) on third bead gun and attach bead hose (A14) to fitting.
10. Install tube elbow fitting (A08) on third bead gun and attach one end of 1/4 in. air hose (A05) to fitting.

Connection of Solenoid Valves to Third Paint and Third Bead Guns

NOTE: This procedure identifies which solenoid valve controls the third paint gun and which controls the third bead gun.

1. Locate two solenoid valves (A03) and install air fittings (A07).
2. Install push-in elbow fittings (A06) on 1/4 in. air hoses (A05) from third paint gun (A02) and third bead gun (A01).

CAUTION

The Road Lazer will be turned on and operated by the Programmable Skipline Controller in the following steps. Refer to manuals 308611 and 308616 for operating instructions.

3. Turn on Road Lazer and Programmable Skipline Controller.
4. Use Programmable Skipline Controller to turn on third paint gun. Note which solenoid valve is on. Turn off third paint gun and connect push-in elbow fitting from third paint gun to solenoid valve.
5. Use Programmable Skipline Controller to turn on bead test. Observe that remaining solenoid valve is on. Turn off bead test and connect push-in elbow fitting from third bead gun to solenoid valve.
6. Turn off Road Lazer and Programmable Skipline Controller.

Final Installation

CAUTION

The wiring in and around the solenoid valves may be damaged or shorted by the access cover if wires are not routed carefully or if the access cover is not carefully installed.

1. Route wiring above and around solenoid valves leaving clearance for access cover (319).
2. Carefully install access cover, using pins (316), washers (317) and nuts (318) to complete installation of kit.

Assembly

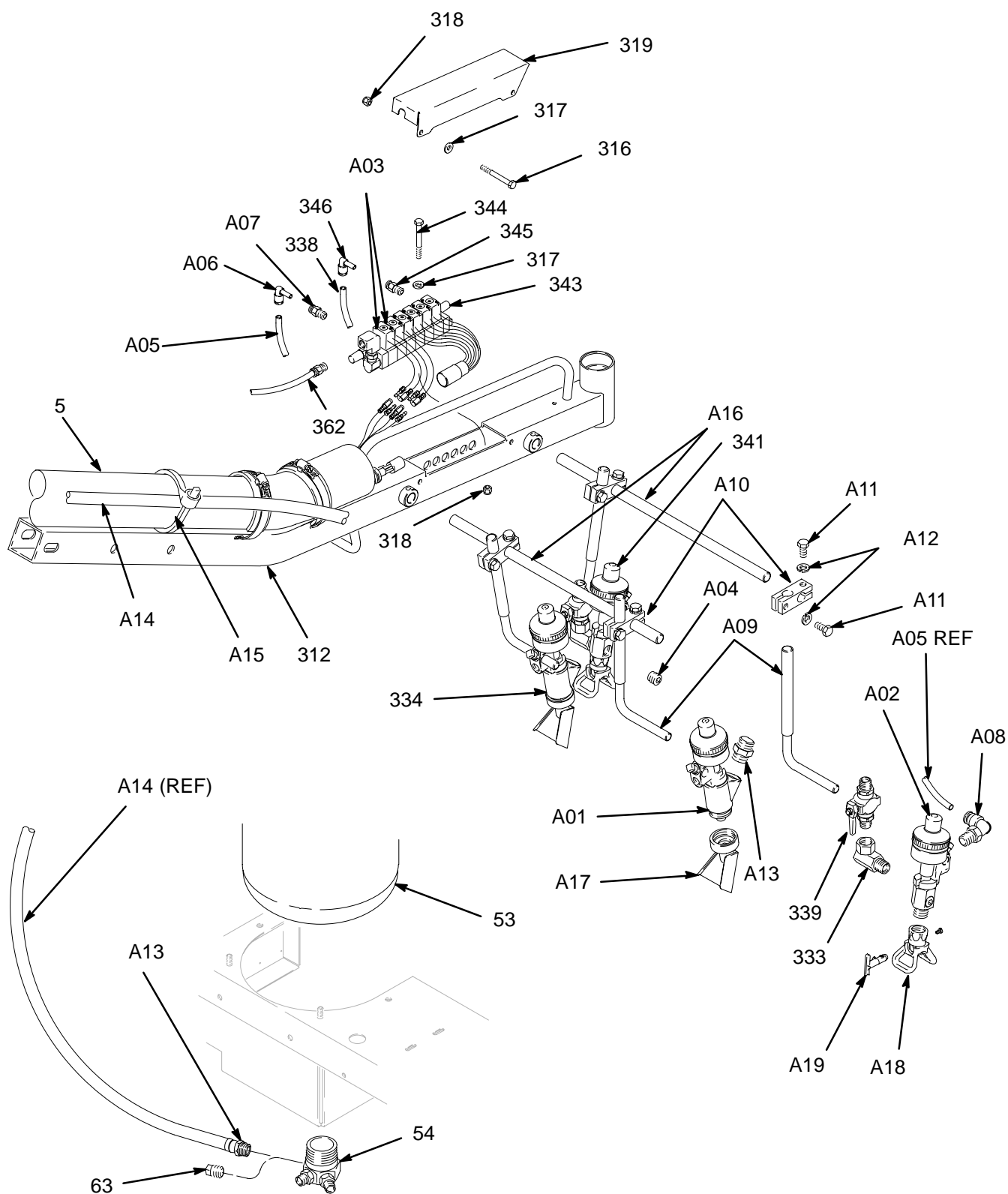


Fig. 1

T10688

Parts List

Third Gun Kit Parts

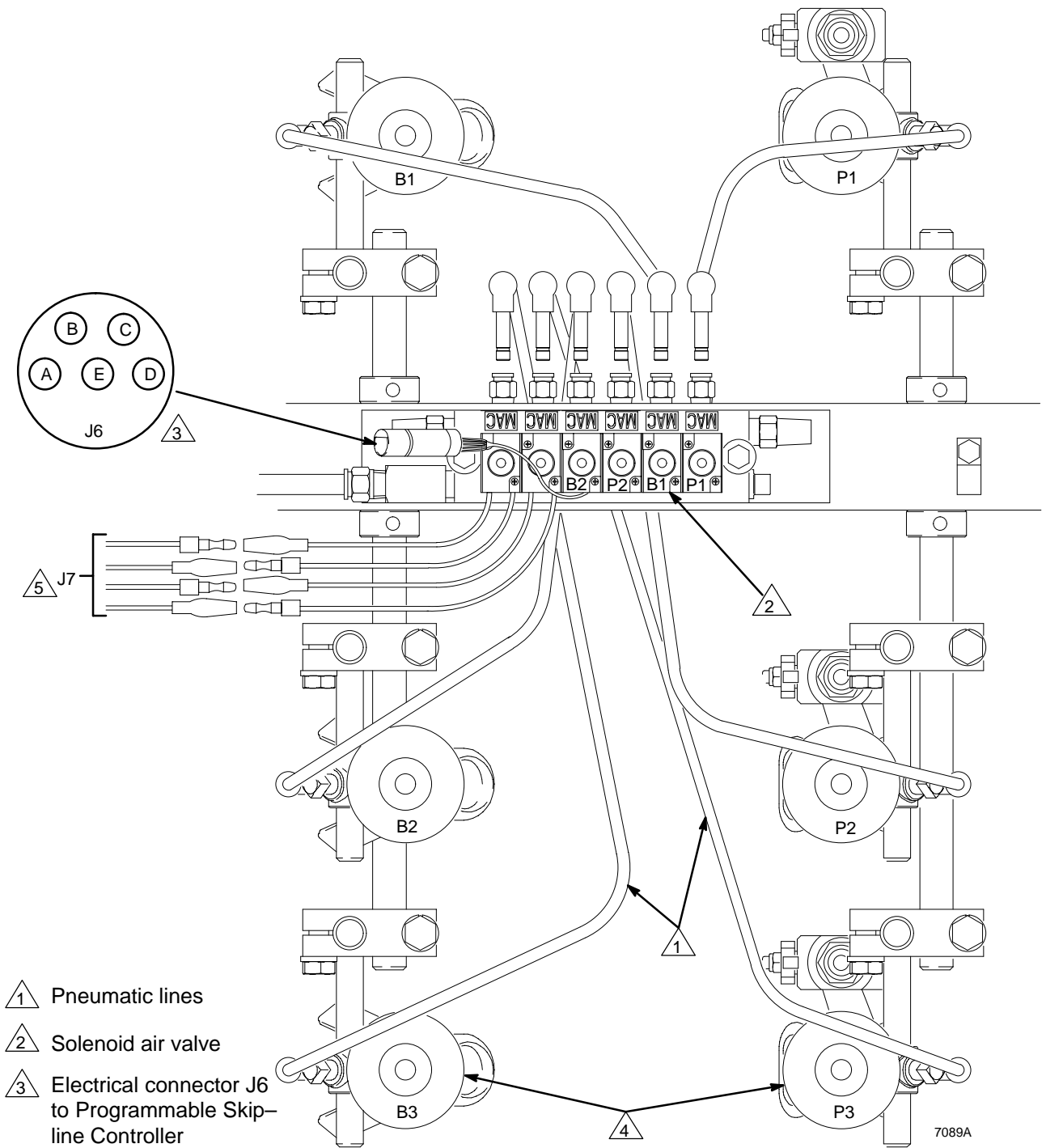
Ref. No.	Part No.	Description	Qty
A01	238329	GUN, bead	1
A02	238332	GUN, paint	1
A03	113792	VALVE, mac	2
A04	101748	PLUG, pipe	1
A05	192215	HOSE, air, 1/4 in.	1
A06	113318	FITTING, elbow, push-in	2
A07	113320	FITTING, air	2
A08	113321	FITTING, elbow, tube	2
A09	191164	ARM, mounting, gun, 90°	2
A10	191218	CLAMP, support, arm	2
A11	100101	SCREW, cap, hex head	4
A12	100133	WASHER, lock	4
A13	111834	FITTING, bead, hose	2
A14	113315	HOSE, bead	1
A15	108774	STRAP, tie, wire	10
A16	192214	ARM, pivot, gun	2
A17	239695	KIT, deflector, wide	3
A18	222674	KIT, repair	3
A19	GHD839	TIP, spray, cylinder (839)	3

Road Lazer Parts

Ref. No.	Part No.	Description	Qty
5	191857	TUBE, protection	1
53	238299	TANK, bead, 23 gallon	1
54	191222	FITTING, bead tank	1
63	104663	PLUG, pipe, 3/4 in, npt(m)	1
312	238320	BEAM, boom	1
316	113469	PIN, clevis	2
317	110755	WASHER, plain	10
318	102040	NUT, lock, hex, grade 5, 1/4-20 unc-3b	5
319	191119	COVER, access	1
334	238329	GUN, spray, bead <i>See Manual 308612 for parts</i>	2
338	191191	HOSE, air, 1/4 in. OD, 12.0 in. (305 mm) long	4
341	238332	GUN, spray, auto <i>See Manual 308613 for parts</i>	2
343	112794	VALVE, air, solenoid	1
344	102313	CAPSCREW, hex hd, grade 5, 1/4-20 unc-2a, 1.75 in. (44 mm) long	2
345	113320	FITTING, air, 1/8-27 npt(f) x 1/8 npt(m) pipe	4
346	113318	FITTING, elbow, plug-in, 1/4 OD female tube x 1/4 male stud elbow	4
362	113319	FITTING, air, 1/4-18 npt(f) x 1/4 npt(m) pipe	1

Schematics

Solenoid Air Valves



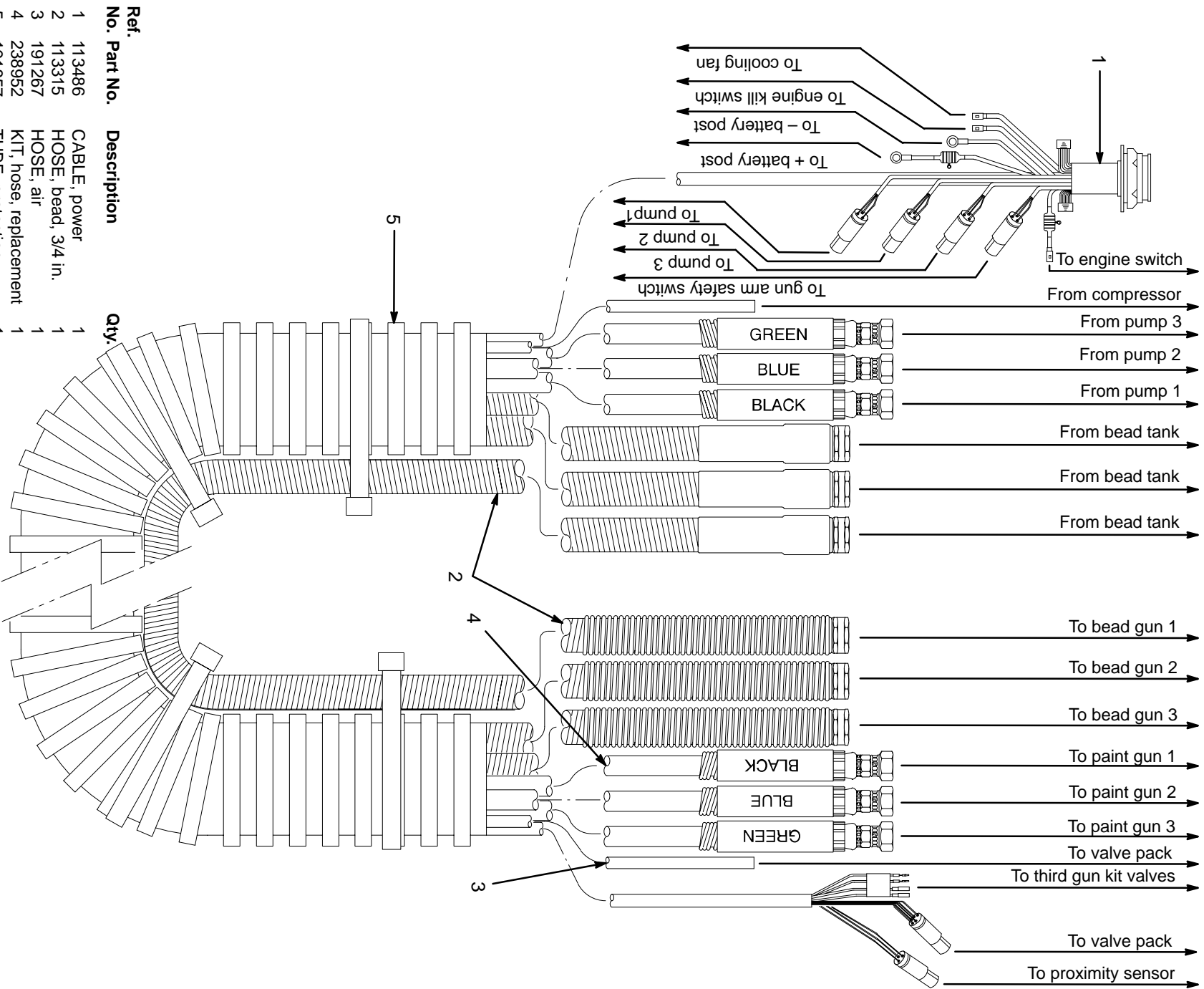
- △ 1 Pneumatic lines
- △ 2 Solenoid air valve
- △ 3 Electrical connector J6 to Programmable Skip-line Controller

- Ⓐ Paint gun (P1) Ⓑ Paint gun (P2)
- Ⓒ Bead gun (B1) Ⓓ Bead gun (B2)
- Ⓔ + 12 Vdc

- △ 4 Third Gun Kit: Paint gun (P3) and Bead gun (B3). Note: Pneumatic line connections for P3 and B3 are determined by solenoid valve wiring and may not be as shown in diagram.
- △ 5 Electrical connector wires J7 to Programmable Skipline Controller from Paint gun (P3) and Bead gun (B3)

Schematics

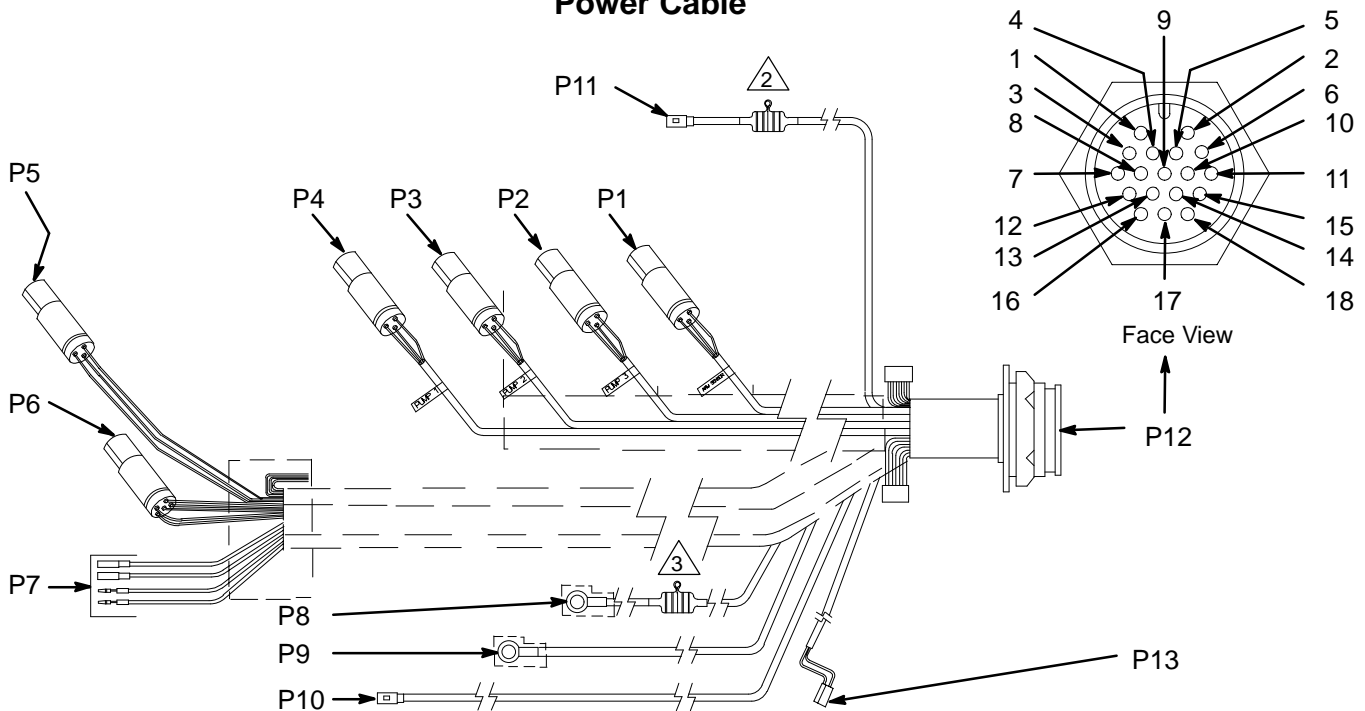
Main Harness 236680



7090A

Schematics

Power Cable



Connector													
	P1	P2	P3	P4	P5	P6	P7	P8	P9	P10	P11	P12	P13
	A B C	A B C	A B C	A B C	A B C	A B C D E	A B C D	A	A	A	A	13 14 15 16	A B
Wire Color Code	R B G	R B G	R B G	R B G	R B W G	C B W B L B B	R R G O R G W B	R	B	G	R	B B B B	BL B
Connects To	19 20 3	19 20 16	19 20 5	19 20 4	19 20 2 6	9 7 10 19	19 11 8	1	20	12	19	20	19 20



R = Red
B = Black
W = White
G = Green
O = Orange
L = Blue

W = White/black
B = Blue/black
R = Red/black

R = Red/white
G = Green/black
O = Orange/black



Fuse: 20A, 32V, type AGC protects the following:

- Fan
- Solenoid air valves
- Proximity sensors for the pump, skip timer and gun arm stowed safety.



Fuse: 4A, 32V, type AGC protects the following:

- Programmable Skipline Control

06339

All written and visual data contained in this document reflects the latest product information available at the time of publication.
Graco reserves the right to make changes at any time without notice.

Sales Offices: Minneapolis, Detroit
International Offices: Belgium, Korea, Hong Kong, Japan

GRACO INC. P.O. BOX 1441 MINNEAPOLIS, MN 55440-1441

PRINTED IN U.S.A. 308678 February 1997, Revised 08/2000